

# @THE COAL FACE

Vol 6 No 8: September 2022

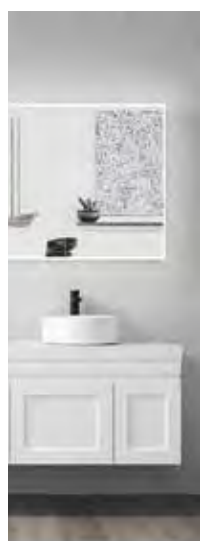
Available online @ [thecoalface.net.au](http://thecoalface.net.au)



# ALWAYS ON CALL

GLENCORE LATEST PARTNERSHIP WITH LIFELINE HUNTER WILL SERVE AS A CONSTANT REMINDER TO THE WORKFORCE AT GLENDELL OPEN CUT THAT NO-ONE HAS TO FACE HARD TIMES ALONE.

PAGE 23



## RENOVATING?

WE'VE GOT YOU COVERED.

Our team will turn your dreams into a reality. We work with you from planning to completion, taking all the stress out of renovating.

**SPECIALISING IN**  
KITCHENS, BATHROOMS, TILES & APPLIANCES



## HOME EMPORIUM SINGLETON



Visit our showroom at **31 John Street, Singleton** or Phone us on **0467 774 947**





# THE EASIEST WAY TO SAVE THIS YEAR



## HAVE YOU HEARD OF COLD SPRAY TECHNOLOGY?

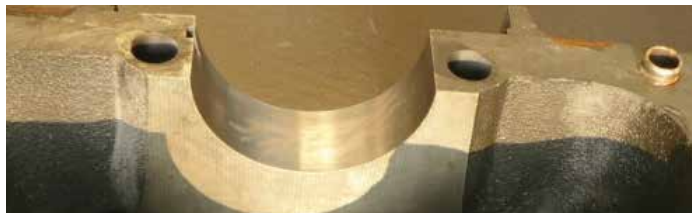
The technology of Cold Spray uses supersonic particle deposition of metal powders to create industrial-scale parts and surface coatings.



AN EXAMPLE OF A DEFECT ON A PART



COLD SPRAY OF METAL ADDED TO THE ORIGINAL PART



FINAL MACHINED FINISH READY FOR USE

**COATINGS THAT CAN BE SPRAYED**  
Aluminium, zinc, copper, tin, nickel, babbitt, gold, silver, platinum, Inconel 635 (He).

**REQUEST A DEMO**  
Simply scan this QR code



0455 552 200 Brauntell.com.au



OPINION

## MINING RESPONSIBLY, FOR TODAY AND TOMORROW

THIS MONTH WE'VE COMMENCED A MAJOR NEW ADVERTISING CAMPAIGN TO PROVIDE THE COMMUNITY WITH INFORMATION ON HOW WE MINE RESPONSIBLY IN NSW, FOR TODAY AND TOMORROW.

Our 'Mining responsibly, for today and tomorrow' campaign is now on air on television and radio across NSW, with more to come in the months ahead.

The campaign will inform people about what we mine in NSW and what it is used for, how we mine and restore land, and how metals mined in NSW are needed for the future, including for solar panels, electric vehicles, wind farms and battery storage.

USING REAL PEOPLE WORKING IN MINING, AND REAL EXAMPLES OF BEST PRACTICE, OUR CAMPAIGN WILL HELP IMPROVE PUBLIC

UNDERSTANDING OF JUST HOW IMPORTANT MINING IS FOR OUR WAY OF LIFE NOW AND IN THE FUTURE, WHILE ALSO DEMONSTRATING THE MANY WAYS WE MINE RESPONSIBLY.

We also hope the information and examples provided in our campaign will encourage more people to consider a career in mining.

We are grateful for the assistance of our Member Companies for helping identify and highlight the great people and practices that feature in our campaign.

Stephen Galilee, CEO, NSW Minerals Council

YOU CAN FIND OUT MORE ABOUT OUR CAMPAIGN AT [WWW.NSWMINING.COM.AU/RESPONSIBLE-MINING-NSW](http://WWW.NSWMINING.COM.AU/RESPONSIBLE-MINING-NSW).

## MORE THAN A JOB

THIS MONTH MANY OF OUR STORIES ARE HIGHLIGHTING THE BRIGHT FUTURE AHEAD FOR OUR COAL MINING INDUSTRY.

The NSW Minerals Council campaign, 'Mining responsibly, for Today and Tomorrow', couldn't say it better about how important mining is, and will continue to be in the future. It's great to see a campaign targeted at improving the real lack of understanding and acknowledgement of what mining does for Australia.

One of the most significant ways mining supports our communities is by providing diverse and highly paid careers. With an additional 24,000 workers forecasted to be required in the NSW coal industry by 2027,

it's an industry that is bursting with career opportunities.

LIKE MOST INDUSTRIES, TECHNOLOGICAL ADVANCEMENTS WILL BRING ABOUT A TRANSFORMATION IN TRADITIONAL JOBS IN THE COMING YEARS. READ MORE ABOUT THIS TRANSFORMATION FROM THE MINERALS COUNCIL OF AUSTRALIA, WHO ARE PLAYING A LEADING ROLE IN IDENTIFYING THE CHANGES EXPECTED IN FUTURE.

What won't change is the opportunities for our next generation to obtain successful and stimulating careers, just like the career Lauren Booth is working towards. Lauren is a Mining and Energy skills graduate and current Diploma of Electrical Engineering student who recently took home a TAFE NSW Excellence Award for Infrastructure, Energy and Construction Student of the Year.

If you want to learn more about the opportunities for a career in mining and its associated industries, then you won't want to miss the Hunter Coal Festival's Careers and Innovation Expo. Held at Muswellbrook RSL Club on Friday, October 21, the Expo is free and open to the public.

Take it from us – the best way to avoid work is to find a job you love.

## @THE COALFACE

**Publisher**  
Shane Davey  
shane@thecoalface.net.au  
0408 759 088

**Editor**  
Rebecca Connolly  
rebecca@thecoalface.net.au  
0408 769 699

**Journalists**  
Jessica Rouse  
Michael Blaxland OAM

**National Business & Advertising Manager**  
Cameron Boon  
cameron@thecoalface.net.au  
0416 205 965

**Operations Manager**  
Jason Bates  
jason@thecoalface.net.au  
0408 275 725

**Design**  
CarrollMel Design

[www.thecoalface.net.au](http://www.thecoalface.net.au)  
Shop 10, 157-159 John Street, Singleton NSW 2330

## MORGAN ENGINEERING

Manufacturing  
Fabrication  
Design & Drafting  
Line Boring  
Mobile Milling  
On-site Machining  
Service Exchange Components  
Liquid Nitrogen Service & Supply



Engineered Solutions that get it done

[morganengineering.com.au](http://morganengineering.com.au) | 02 6572 2032







# AUSTRALIA'S MINING INNOVATION ECOSYSTEM

‘AVE A LAUGH WITH

HUNTER VALLEY

Hydraulink

Hose and Fittings

BEST UNDER PRESSURE

There are basically three kinds of people in this world. Those who know math and those who don't.

02 6571 1625

hvhydraulink@bigpond.com

2 Mathry Cl, Singleton NSW 2330

TYRE DOCTOR

WE'RE OTR. WHERE EXPERIENCE COUNTS.

PROUD SUPPORTER OF HUNTER VALLEY MINING CHARITY RUGBY LEAGUE KNOCKOUT COMPETITION

Westpac Rescue Helicopter Service

Proudly Supporting

1800 897 336

sales@tyredactor.com.au

tyredactor.com.au

TYRE DOCTOR

WE'RE OTR. WHERE EXPERIENCE COUNTS.

PROUD SUPPORTER OF HUNTER VALLEY MINING CHARITY RUGBY LEAGUE KNOCKOUT COMPETITION

Westpac Rescue Helicopter Service

Proudly Supporting

1800 897 336

sales@tyredactor.com.au

tyredactor.com.au

TYRE DOCTOR

WE'RE OTR. WHERE EXPERIENCE COUNTS.

PROUD SUPPORTER OF HUNTER VALLEY MINING CHARITY RUGBY LEAGUE KNOCKOUT COMPETITION

Westpac Rescue Helicopter Service

Proudly Supporting

1800 897 336

sales@tyredactor.com.au

tyredactor.com.au

OPINION

THE UNRIVALLED SUCCESS OF AUSTRALIA'S MINING INDUSTRY HAS LONG RELIED ON TECHNOLOGY AND INNOVATION TO IMPROVE SAFETY, DRIVE GREATER PRODUCTIVITY AND DELIVER INCREASINGLY SUSTAINABLE OUTCOMES.

Australia's minerals industry is essential for modern life and will contribute the raw metals needed for the global transition to the net-zero economy. Solar photovoltaic plants, wind farms and electric vehicles are more minerals intensive than their hydrocarbon equivalents. Companies mining other mineral commodities continue the quest to reduce emissions in extraction and use.

The mining industry is also an increasingly critical driver of broader industry development and innovation.

Productivity enhancing technology not only assists in discovering new resources, but has the capacity to make existing resources more economic with the same level of inputs, and improved data and artificial intelligence are making operations more efficient. Technology is also removing people from potentially hazardous situations, helping predict and model operational changes that improve safety, and enhance training so that the workforce is better equipped to perform work safely.

At a site by site level, electrification and fuel switching are reducing emissions in support of the industry's ambition to achieve net-zero emissions by 2050.

THESE TECHNOLOGY DRIVEN IMPROVEMENTS ARE OCCURRING THROUGHOUT THE MINING LIFECYCLE FROM EXPLORATION, DEVELOPMENT AND OPERATIONS TO CLOSURE AND REHABILITATION. TECHNOLOGY IS EVEN ENHANCING COMMODITY MARKETING AND TRADING BY IMPROVING INTEGRITY IN TRANSACTIONS AND SUPPLY CHAINS.

The innovators driving this transformation include miners, the mining workforce, the Mining Equipment, Technology and Services (METS) sector, original equipment manufacturers, university-led mining research institutions, Cooperative Research Centres (CRCs) and CSIRO-led research collaboration.

A catalytic and external benefit of the technology transformation is a highly skilled workforce. Australia's minerals industry has invested significantly in training and reskilling the workforce to fully utilise new technologies in mining.

The MCA has played a leading role in identifying the future skills challenge and miners and original equipment manufacturers are rising to the challenge to develop this workforce of the future.

While some roles will be replaced, many new highly skilled, highly paid roles are being created and

other roles are being enhanced by technology. This technologically-advanced workforce is building new capabilities for Australia.

The success is tangible.

Since 2005, Australia's mining industry has invested more than \$30 billion in research and development, sitting in the top four (occasionally top two) of all industries. Australia is a top three jurisdiction for mining patent filings, and four Australian universities are in the top five world rankings for mining engineering.

Australia's mining industry is embracing technology-led innovation at an unprecedented rate, but this transformation cannot be taken for granted. It requires coordinated action and a shared commitment by industry and government to development and maximise the substantial opportunities to secure Australian mining's place as a global leader.

**Tania Constable**  
CEO, Minerals Council of Australia

LOOK OUT FOR OUR UPCOMING PUBLICATIONS THE DIGITAL MINE AND 30 THINGS: THE FUTURIST EDITION ON OUR WEBSITE WWW.MINERALS.ORG.AU, WHICH COVERS AUSTRALIA'S MINING INNOVATION ECOSYSTEM INCLUDING THE EVOLUTION, THE INNOVATORS AND THE TECHNOLOGIES THAT HAVE CONTRIBUTED TO THE SUCCESS OF AUSTRALIA'S MINING INDUSTRY.

**GLENCORE INJECTS BILLIONS INTO HUNTER ECONOMY**

Mining giant Glencore injected \$3.6 billion into the Hunter Region's economy in 2021.

The company's latest economic contribution study showed the most significant proportion of their spending was on goods and services to 1,200 predominantly local businesses with \$1.8 billion spent in total.

Glencore also paid nearly \$900 million in royalties and taxes to the NSW and Australian Governments in that year.

They partnered with around 100 community organisations in the Hunter and contributed to the creation of the Community and Economic Development Fund in partnership with Singleton Council and the Bloomfield Group.

**WIND PROJECT BLOWING HUNTER'S WAY**

The Federal Government declared the first offshore wind zone would be the Gippsland coast, with the Hunter coast following soon after.

The zones give the green light for offshore wind projects which the government said aim to fill the future void which will be left by coal-fired power stations.

A consultation period is underway with residents who live in Victoria's southeast who will be near the transmission line which are expected to be above ground and then run from the wind zone to the energy grid in the Latrobe Valley which currently sends power generated by the Yallourn and Loy Yang Power Stations.

Consultation in the Hunter will be carried out over the next 18 months.

**FORMER BILLIONAIRE WANTS MINE BACK**

Former Hunter billionaire Nathan Tinkler has made a takeover bid for a mine he used to own in the region.

On Monday, Australia Pacific Coal announced to the Australian Stock Exchange it had received a non-binding takeover bid from Mr Tinkler who has proposed buying 20 per cent of the Dartbrook mine project at Aberdeen for \$3.78 million, refinance the debt the company owes and then launch a takeover

**SANTOS BUYS OUT HUNTER GAS PIPELINE**

A controversial gas pipeline project stretching from Queensland to Newcastle has been bought by energy company Santos.

The Hunter Gas Pipeline Project, spearheaded by Weston Aluminium director Garbis Simonian has been bought by the company who says the project would help deliver gas from its other project the Narrabri coal-seam gas project.

That project will deliver more than half NSW's gas demand once it's fully operational.

Santos also said they want to make the unbuilt Hunter pipeline project hydrogen compatible as customer demand evolves during the energy transition.

**FINALLY A RESULT FOR SINGLETON COUNCIL**

Singleton locals had to go back to the polls for the third time in a year in July after a glitch in the online voting system made some votes invalid from the December 2021 poll.

The Supreme court ruled the results could've been different if the votes had counted so residents voted for their nine councillors again.

Godfrey Adamthwaite

(Independent), Mel McLaughlin (Shooters, Fishers and Farmers), Sarah Johnstone (Labor), Sue George (Independent), Dan Thompson (Independent), Tony McNamara (Independent), Tony Jarrett (Labor), Val Scott (Independent) and Hollee Jenkins (Independent) will all be joining Mayor Sue Moore at council chambers, as the newly elected representatives.

**PRESSURE FORCES GM RESIGNATION**

Muswellbrook Shire Council lost their General Manager of the last four years with Fiona Plesman announcing her resignation.

Her resignation comes after increasing pressure on the Council in recent weeks over controversial decisions including the closure of the council-owned Gallery Cafe at the Muswellbrook Regional Arts Centre and the handling of a development application for a greyhound boarding facility in Martindale that saw private details of locals published.

Ms Plesman had been the General Manager since July 2018.

bid for the entire project at up to 30 cents per share.

Nathan Tinkler has been involved with the Dartbrook mine project before, he was financially involved with two other shareholders in 2015 when they bought the mine from the previous owner Anglo American for \$25 million plus royalties.

In April, Trepan Services made their move to the company to buy the Dartbrook project.

A meeting was postponed with another interested party, Trepan to finalise a possible agreement after Mr Tinkler put forward his proposal. The company is now taking the time to consider the proposal.

**INTERCONNECTOR DELIVERS MORE RELIABILITY**

The State Government has completed upgrades to the Queensland to NSW electricity Interconnector, which they say means a more reliable and affordable supply.

\$236 million has been spent on the upgrade of 300 kilometres of transmission lines and the replacement of 58 towers between Liddell, Muswellbrook and Tamworth.

The project was identified as a priority by both the Australian Energy Market Operator in the 2020 Integrated System Plan and by the State Government in the NSW Transmission Infrastructure Strategy.

**EXPANDED VISION FOR FUTURE AGL SITES**

Energy giant AGL and billionaire Andrew "Twiggy" Forrest's Fortescue Industries have expanded their original feasibility study for a green hydrogen hub in the Upper Hunter.

Last December the two companies announced their plans to turn the sites that the Liddell and Bayswater Power Stations are on into a green hydrogen precinct with solar, wind, storage and manufacturing.

In an update in August, the companies said they're now considering a project from 150MW up to 2GW and new partners are also being brought on board including Japanese groups Inpex and Osaka Gas and Australian companies APA Group and Jemena.

The feasibility study is expected to be finished by the end of the year.

**NEW HOPE EXPANDS HUNTER VALLEY OWNERSHIP**

New Hope Corporation, the company that owns Bengalla Mine at Muswellbrook have bought a 15% interest in Malabar Resources Limited for a total investment of \$94.4 million.

Malabar owns the Maxwell Underground Mine near Jerrys Plains which was approved in 2020. The underground mine has been a long time in the making with Anglo American unsuccessfully getting what was called the Drayton South project across the line.

Anglo American sold its assets in 2018. Construction on the Maxwell mine started in May this year and the first coal is expected to be produced next year.

The NSW Government has also recently granted the Bengalla Mining Company an exploration licence for 556 hectares adjoining the western side of the mine.

CREIGHTONS FUNERAL SERVICE

Westpac Rescue Helicopter Service

Proudly Supporting

Call the 24/7 Phone 1300 130 955

Peace of Mind with a Prepaid Funeral Plan

Creightons Funeral Service is in partnership with Westpac Rescue Helicopter service and the CFMEU. Creightons will be donating a percentage of the Prepaid Funeral Plan Professional fees when you mention this advert. We are proud to continue our support of the local community and its members.

A Prepaid Funeral Plan:

• Locks the price in at today's rates

• Your wishes are respected

• Eases the emotional and financial burden on your loved ones

Our friendly team can meet you at one of our conveniently located **Hunter offices** or in the comfort of your home.

creightonsfuneralservice.com.au

4 SEPTEMBER 2022 | @ THE COALFACE

@ THE COALFACE | SEPTEMBER 2022 5



# MAKING MORE MINERS

THE MINING INDUSTRY IS A MAJOR EMPLOYER IN NSW OFFERING CLOSE TO 30,000 DIRECT JOBS, MANY IN REGIONAL AREAS. AT THE END OF LAST FINANCIAL YEAR ONLY 19% OF EMPLOYEES IN THE AUSTRALIAN MINING INDUSTRY WERE FEMALE. WHILE THIS IS AN INCREASE ON 16% FROM 2017, THERE IS STILL MUCH WORK TO DO TO ACHIEVE GENDER BALANCE.

However, the future is looking bright if the female to male ratio in the TAFE NSW Muswellbrook Mining and Energy Skills Program is any indication of progress. Over its 17 years the number of female participants in the program has risen from 0 to 11 and this year they make up 36% of the class, which is almost double the industry average. Mining and Energy skills graduate and current Diploma of Electrical Engineering student Lauren Booth is a prime example of the high calibre of female graduates produced in the program, having taken home a TAFE NSW Excellence Award for Infrastructure, Energy and Construction Student of the Year. Lauren participated in the

program in 2019 and completed a Certificate in Electrotechnology, as well as a Certificate IV in Industrial Electronics and Control. Lauren is now back for a further qualification while working at Hunter Valley Operations with the aim of being the crucial link between professional engineers and hands on tradespeople.

**"I LOVE WHAT I DO. TAFE NSW GAVE ME THE PRACTICAL SKILLS I NEEDED AND GET INTO THE INDUSTRY FASTER. NOW I'VE GOT MYSELF A TRADE AND HAVE HAD SOME TIME WORKING IN THE INDUSTRY, I'VE TURNED BACK TO TAFE NSW TO DEEPEN MY KNOWLEDGE AND HELP ME TAKE MY CAREER TO THE NEXT LEVEL."**

TAFE NSW Electrotechnology Teacher Darren Ward said resource companies are making considerable efforts to attract and retain women. "TAFE NSW takes pride in our role of teaching, mentoring and encouraging our female students to become fully qualified and confident industry participants.

"In developing the next generation of industry leaders, regardless of gender, a critical component is ensuring access to high quality education and training. TAFE NSW work closely with some of the Hunter's biggest employers to ensure we give all apprentices the abilities, knowledge and 'seam to sea' exposure they need to be job-ready."



TAFE NSW EXCELLENCE AWARD FOR INFRASTRUCTURE, ENERGY AND CONSTRUCTION STUDENT OF THE YEAR, LAUREN BOOTH

Delivered from the purpose built Mining and Energy Skills Centre at TAFE NSW Muswellbrook, the six-month program is a unique offering that complements the course delivery for trade qualifications in the electro-technology, engineering-mechanical trade and mobile plant technology disciplines.

FOR MORE INFORMATION ABOUT ENGINEERING OR ELECTROTECHNOLOGY COURSES AT TAFE NSW OR VIA TAFE DIGITAL, VISIT [WWW.TAFENSW.EDU.AU](http://WWW.TAFENSW.EDU.AU) OR PHONE 131 601.



## BOOSTING MINING COMMUNITIES

APPLICATIONS ARE NOW OPEN FOR ROUND NINE OF THE NSW GOVERNMENT'S RESOURCES FOR REGIONS PROGRAM, TO PAVE THE WAY FOR NEW PROJECTS THAT WILL IMPROVE AMENITIES AND INFRASTRUCTURE IN THE UPPER HUNTER.

RESOURCES FOR REGIONS FUNDING IS HELPING BUILD MUSWELLBROOK SHIRE COUNCIL'S NEW UPPER HUNTER INNOVATION PRECINCT.

Upper Hunter MP Dave Layzell said the \$140 million Round Nine will deliver projects that improve local facilities for mining communities, while creating new jobs and providing work for local tradespeople and suppliers.

"This is great news for the communities in the Singleton, Muswellbrook, Upper Hunter, Mid-Western and Liverpool Plains council areas, and I am thrilled that the NSW Government is able to show an ongoing commitment to delivering projects that benefit our community and improve our way of life," Mr Layzell said.

"We have seen the benefits provided by previous Resources for Regions projects, with projects funded such as roadworks on the Bylong Valley Way, the Denman Revitalisation Project which upgraded the town's main street, and I'm pleased that there are even more projects on the way.

"Last year's round provided more than \$6.3

million to Muswellbrook Shire Council for the proposed Muswellbrook Regional Entertainment and Conference Centre and Singleton Rugby League Club received \$1.3 million for its clubhouse development."

**DEPUTY PREMIER AND MINISTER FOR REGIONAL NSW PAUL TOOLE SAID THE PROGRAM IS ABOUT GIVING BACK TO MINING COMMUNITIES.**

"I'm thrilled to announce this funding towards Round Nine of the program, which will see continued support delivered to communities, and reaffirms the NSW Government's commitment to our mining communities," Mr Toole said.

"It's important that the NSW Government continues to support our regional mining towns that supply our State with the resources we need, and the Resources for Regions program is proof of the NSW Government's commitment to the future of our regions."

Resources for Regions Rounds One through Eight have delivered 242 projects worth \$420 million since the program's inception in 2012.

APPLICATIONS CLOSE ON 30 SEPTEMBER 2022. [WWW.NSW.GOV.AU/RESOURCESFORREGIONS](http://WWW.NSW.GOV.AU/RESOURCESFORREGIONS)

**Expressway Spares**  
PTY. LTD.



**Supplying the MINING INDUSTRY with parts and components suitable for Caterpillar and Hitachi since 1964**

**HUNTER VALLEY  
02 6574 6499**

[www.EXPRESSWAY.com.au](http://www.EXPRESSWAY.com.au)

**MACHINE REBUILD & REPAIR FACILITIES AVAILABLE**



*Innovative Drilling Solutions*

## NEED A DRILLING SOLUTION?



**BLASTHOLE DRILLING**



**LABOUR HIRE**



**EQUIPMENT DRY HIRE**



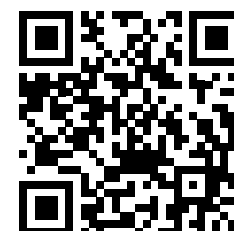
**GEOTECHNICAL SERVICES**



**DESIGN, MANUFACTURE & REBUILDS**

**JOIN OUR TEAM!**

VISIT OUR WEBSITE TO FIND OUT MORE AND APPLY



02 4027 5003



[smwdrillingservices.com](http://smwdrillingservices.com)



Emerald

Mt Thorley



# JOBS BOUNCING BACK

NSW COAL INDUSTRY EMPLOYMENT IS EXPECTED TO BOUNCE BACK, DESPITE A 9.4 PER CENT DROP OVER THE PAST TWO YEARS.



## THE MEGA MONTHLY MEAT RAFFLE

WORTH \$150 COMPLIMENTS OF ROBERT'S MEATS

THE HUNTERS BEST BUTCHER OF HAND-PICKED MEATY GOODNESS!

FOR YOUR CHANCE TO WIN, SIMPLY SMS: ROBERTS MEATS, YOUR NAME AND YOUR EMAIL ADDRESS TO 0438 474 290.

Limit of one entry per person. By submitting an entry, you consent to the use of your contact details for promotional and marketing purposes.

New modelling released by the Australian Resources and Energy Employer Association (AREEA) shows Australia's resources and energy industry will conservatively require an additional 24,000 workers by the end of 2027.

The association's Resources and Energy Workforce Forecast: 2022-2027 report lists 107 projects as being either committed or advanced in feasibility and considered likely to proceed within the five-year period.

The report says, notwithstanding the decline of the past two years, NSW has a healthy number of new and expansion projects in its investment pipeline, set to add about 4635 production-oriented workers to its workforce by the end of 2027.

**THIS WOULD REPRESENT 13.7 PER CENT GROWTH ON TODAY'S EMPLOYMENT LEVELS AND MOST OF THIS DEMAND WILL COME FROM THE COAL SECTOR.**

Eleven coal project expansions will add another 53.3mtpa onto NSW's annual coal production and require an estimated 2865 new workers by 2026.

Another lone new coal project (Walarah 2 on the Central Coast) is scheduled for completion in 2027,

requiring 290 workers.

Should this to come fruition it would lift NSW's coal workforce, which has been in fairly strong decline in recent years, by nearly 20 per cent

Looking to projects earlier in feasibility, NSW has an additional 28 projects which could double the forecast workforce demand to 9000, if those projects were to hypothetically all proceed.

AREEA chief executive Steve Knott said the industry would struggle to fulfill this new workforce demand without "creative solutions and a coordinated response".

"While we will always celebrate the strength of the industry and the jobs and other benefits that come with increased project investment, given the significant skills shortages at present, many would look to these new workforce projections with some trepidation," he said.

"Our industry is battling the worst skills crisis in a generation. This is threatening the continuity of existing operations, resulting in temporary or permanent production downgrades, and driving other workforce issues including historic levels of staff turnover."

### KEY NEW PROJECTS ARE:

- Vickery (Whitehaven) north of Gunnedah
- 8mtpa thermal and coking coal
- Est. start-up: 2025
- Est. workforce: 700
- Mount Pleasant optimization (Mach Energy) in the Upper Hunter
- 7.5mtpa thermal coal
- Est. start-up: 2026
- Est. workforce: 500
- Mandalong southern extension (Centennial) on the Central Coast
- Coal expansion
- Est. start-up: 2022
- Est. workforce: 300
- Tahmoor South (SIMEC group) at Bargo in the Macarthur region
- 3.5mtpa
- Est. start-up: 2022
- Est. workforce: 400

## THE MINDFUL MINER

JOSH DAGG IS A PLANT OPERATOR AT BLOOMFIELD'S RIX'S CREEK MINE. HOWEVER, HE'S ALSO 'THE MINDFUL MINER', AND ON A MISSION TO START SOME IMPORTANT CONVERSATIONS WITH CHILDREN AROUND MENTAL HEALTH.

Josh and his partner Amy Heinzl are a couple with a passion for helping others. Whether it's fundraising, providing a shoulder to cry on, or simply listening, they are the first to put up their hands. Because they both understand what it's like to go through tough times.

In 2020 after a difficult separation Josh's life turned upside down. The trauma he was subjected to led to his mental health deteriorating and life became so dark that he began to have suicidal thoughts.

"It was debilitating. I felt like I wasn't in control of my own mind," shared Josh. "I had always considered myself pretty resilient and confident about who I was as a person, but I couldn't move past how I was feeling. Not



CO-AUTHORS OF 'THE MINDFUL MINER', JOSH DAGG AND AMY HEINZL

only did I not have any experience with mental health issues, but I also had no skills or knowledge around them. I had never learnt how to cope. Dealing with trauma, resilience, or even just being able to express how I was feeling was something that I was never taught as a child.

"Luckily, I realised I needed help, and I reached out. It wasn't easy but with support from psychologists, family, friends and my workplace, I got through it."

The experience taught Josh a lot about mental health and how important it is to not bottle things up inside. The more he learnt, the more he discovered he wanted to use his newfound knowledge to help others.

**"I KNEW I DIDN'T WANT ANYONE ELSE TO FEEL THE WAY I DID IF I COULD HELP IT. KNOWING I DIDN'T HAVE THE TOOLS TO DEAL WITH TRAUMA AND HAVING**

**HAD TO LEARN THEM LATE IN LIFE, I WANT TO MAKE SURE OUR NEXT GENERATION LEARNS THEM EARLY, SO THEY CAN DEAL WITH THE ISSUES THEY WILL ULTIMATELY FACE IN THEIR LIVES MORE EFFECTIVELY."**

Using everything they had learnt, Josh and Amy co-authored a book targeted at children called 'Mr Mindful Joins our Class'. It was a family effort, with Josh's mum Tracey providing the illustrations and their children also providing insights.

The book takes you through 12 key components of life, among them gratitude, adversity, resilience, mindfulness and empathy. Josh and Amy's hope is the book will be used as a tool in classrooms to start important conversations with children that will then lead on to workshops where they can learn and

practice the skills.

Amy is a SLISO teacher, and she delivered the book to her Year 3 and Year 4 classes. The result was exactly what they had been hoping for.

"I couldn't believe how engaged and interactive the students were. It simply amazed me how much it impacted them and got them talking. It's rewarding to help them understanding these concepts at their young age and knowing it will help with their development and make them more resilient in the future," said Amy.

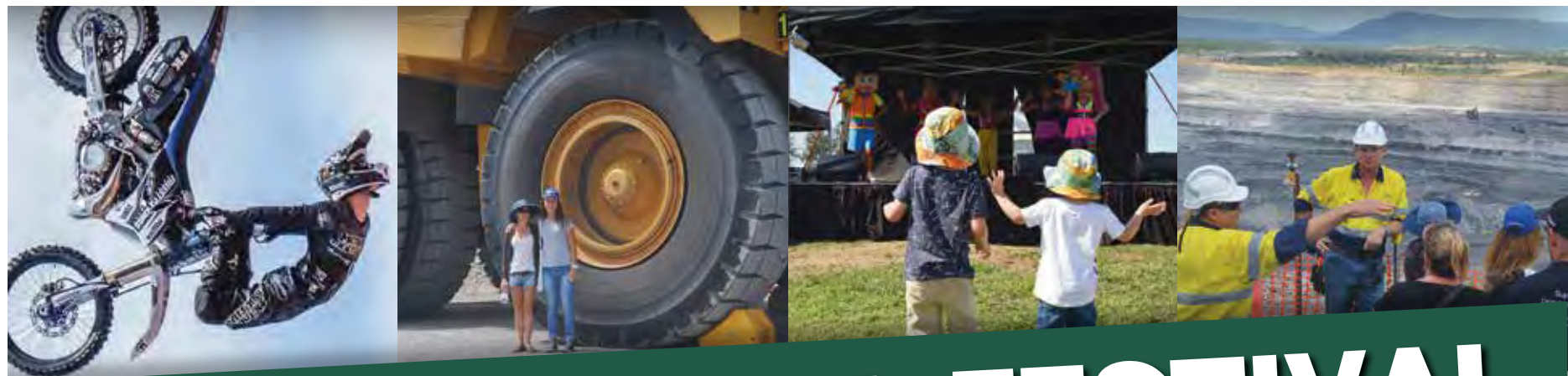
While the book is targeted at children specifically between the ages 8 to 12, having read the book myself I firmly believe that whatever age you are you can benefit from the lessons it instils.

## 'AVE A LAUGH WITH HUNTER VALLEY Hydraulink Hose and Fittings

BEST UNDER PRESSURE

How do you console an English Teacher? There, their, they're

02 6571 1625  
hvhydraulink@bigpond.com  
2 Mathry Cl, Singleton NSW 2330



# HUNTER COAL FESTIVAL

Join us for a festival of innovation, education & fun celebrating Upper Hunter community and co-existence!

**CAREERS & INNOVATION EXPO**  
FRIDAY, OCTOBER 21  
MUSWELLBROOK RSL CLUB

**MINING LEADERS LUNCH**  
FRIDAY, OCTOBER 28  
SINGLETON CIVIC CENTRE

**SINGLETON COMMUNITY DAY**  
SATURDAY, OCTOBER 29  
SINGLETON SHOWGROUND

GLENCORE

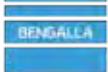
Peabody



YANCOAL



BHP



For more info check out [www.huntercoalfestival.com.au](http://www.huntercoalfestival.com.au)

## FOR ALL FASTENERS & INDUSTRIAL SUPPLIES



## EASY ONLINE ORDERING

Quick and easy product search from our huge range of over 50,000 products



PHONE 02 4968 9101 sales@nhtb.com.au www.nhtb.com.au





## HOT WHEELS

What started off as a couple of local chaps proudly parking their pride and joy vintage bus and car at the Broke Store over 30 years ago, has now evolved into a massive annual event on the Broke calendar.

Over 5,000 people make the day trip to Broke's McNamara Park to enjoy good old fashion friendliness and warmth amongst the gum trees. The Broke Fair & Vintage Car Display has an action packed lineup of entertainment, displays, market stalls, food and wine to keep the punters entertained.

THE KIDS WILL LOVE THE RIDES, MAGIC SHOWS AND ANIMALS WHILE MUM AND

DAD ENJOY THE FESTIVAL ATMOSPHERE. OVER 60 MARKET STALLS, LIVE MUSIC, WHIP CRACKING, BUSH POETRY AND SO MUCH MORE THROUGHOUT THE DAY.

Take your time to explore over 200 vintage, veteran and classic cars, trucks and motorcycles, and check out the lovingly restored vintage farm machinery from the good folk at the Hunter Valley Vintage Farm Machinery.

GET YOUR MOTOR REVVING AT BROKE VILLAGE FAIR AND VINTAGE CAR DISPLAY ON SUNDAY, 11TH SEPTEMBER.



There will be master artisans, keen to share their passion and skill. From blade smiths, jewelers, chainsaw sculptors, whip cracking legend and magic maestro to bread and cheese makers, salami producers, chefs and dairy farmers.

Free mine tours to Bulga Open Cut mine will also be running throughout the day, leaving at 10am, 11.30am and 1.30pm.

THE ACTION KICKS OFF AT 9AM AND ENTRY IS BY GOLD DONTATION. VISIT BROKE VILLAGE FAIR - BROKE FORDWICH FOR MORE INFORMATION. WWW.BROKEFORDWICH.COM.AU

**DESIGN**

**ENGINEERING**

**FABRICATION**

**SITE INSTALLATIONS & PROJECT MANAGEMENT**

**MINING**

**RAIL**

**INFRASTRUCTURE & CONSTRUCTION**

113 Mitchell Avenue, Kurri Kurri NSW 2327

t 02 4937 4570 f 02 4937 1777

e sales@solidengineering.com.au

www.solidengineering.com.au

## DO YOU WANT A CAREER IN THE UPPER HUNTER'S BIGGEST AND MOST DYNAMIC INDUSTRY?

THE HUNTER COAL FESTIVAL IS GIVING LOCALS THE OPPORTUNITY TO LEARN MORE ABOUT BEING PART OF THE UPPER HUNTER'S MINING INDUSTRY.



Careers in mining and its associated industries will be in focus at the Hunter Coal Festival's Careers and Innovation Expo.

The Expo will be held at Muswellbrook RSL Club on Friday, October 21.

The Expo will be free and open to the public. The Festival has also offered all Upper Hunter high schools bus transport for students to the Expo.

While the exhibitors' list is still being finalised, most of the Hunter Coal Festival's mining sponsors have indicated they will participate with their own displays.

Expo attendees will have the opportunity to talk directly with mining and supply company representatives and learn how they can access a career in the mining industry.

As well as learning about

apprenticeship programs, employment in trades and non-tertiary degree roles, attendees will also be able to access expert advice on education requirements for tertiary-degree employment including STEM-related roles.

### OTHER HUNTER COAL FESTIVAL EVENTS INCLUDE:

- The Mining Leaders Lunch on Friday, October 28 at the Singleton Civic Centre
- The Singleton Community Day on Saturday, October 29 at Singleton Showground

FOR MORE INFORMATION ON THE HUNTER COAL FESTIVAL SEE HUNTERCOALFESTIVAL.COM.AU

OPINION

## PAYING OUR RESPECTS

THE MOST IMPORTANT ANNUAL EVENT IN OUR UNION'S CALENDAR IS HELD EACH SEPTEMBER, WHEN WE GATHER IN FRONT OF OUR MEMORIAL WALL TO PAY OUR RESPECTS TO ALL MINeworkers WHO HAVE DIED AS A RESULT OF COAL MINING ACCIDENTS.



On 11 September, we will hold our 25th Annual Memorial Day Service. We are very much looking forward to this year's event after the disappointment of postponing it for two years due to Covid restrictions. Additionally, this will be the first Memorial Day Service held in front of our newly restored Jim Comerford Memorial Wall.

Memorial Day is an opportunity for unionists, mineworkers, bereaved families and all members of the community to come together and reflect on the important role mining plays in our District and the enormous cost paid over many years in workers' death and injury.

The original memorial wall was unveiled by Prime Minister Paul Keating in 1996. However, structural failings of the wall and deterioration of the brass plaques meant an overhaul was needed.

With support from the Mineworkers Trust - our union's charitable foundation - our District has rebuilt the wall with striking black granite plaques to honour and remember coal miners killed in the Northern District Coalfields. The new wall was

officially unveiled last year.

After painstaking research to identify and correct any errors or omissions of names on the previous wall, it now features 1793 names. The names tell a story about the history of coal mining in our District and the human toll it has taken. The youngest name on the wall is nine-year-old William France, killed at Pacific Colliery and the eldest is 80-year-old William Howes, killed at Abermain Colliery.

The most recent name added is that of Nigel Walker who was tragically killed in a motorcycle accident on his way home from work at the Liddell Open Cut mine in March 2021.

FOR NIGEL'S FAMILY - AND ALL BEREAVED FAMILIES - WE HOPE THAT THE MEMORIAL WALL OFFERS A PLACE OF SOLACE AND REMEMBRANCE, NOT JUST ON MEMORIAL DAY BUT ALL YEAR ROUND.

The Memorial Wall is a reminder of the inherent risks in the mining industry. For all those named, there are many more who have suffered life-changing injuries. It is an

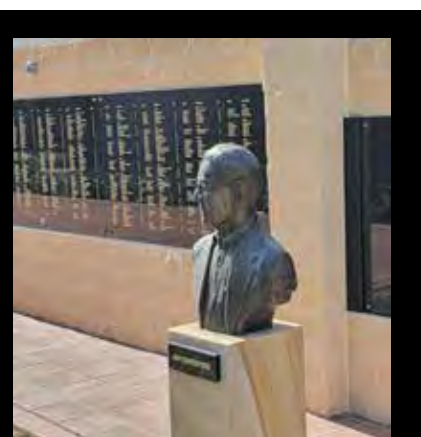
unfortunate reality that most of the safety measures in place in today's coal mines were introduced in the wake of disasters and tragedies.

In September we remember the Bellbird Colliery disaster nearly 100 years ago. On 1 September 1923 a series of underground explosions and fires killed 21 men.

This tragic loss of life devastated the town of Cessnock. We can see its legacy today not only in the Bellbird Miners Memorial Park or the names listed on our Memorial Wall, but also in the incredible network of mines rescue stations we now have throughout our NSW coalfields. In the aftermath of the Bellbird disaster, a coronial inquest and Royal Commission were conducted and in 1924, the Bill to establish mines rescue stations was tabled in the NSW Parliament. Our predecessor union, the Miners Federation, strongly supported the establishment of centralised mines rescue stations and we remain actively involved in our world-class mines rescue system a century later. All members of the community are welcome to attend Memorial Day

and we encourage you to experience the moving ceremony where wreaths are laid, bagpipes play, and the miners' lamp is lit to keep the flame of memory alive.

Robin Williams  
District President MEU Northern Mining and NSW Energy



PLEASE JOIN US FOR THE 25TH ANNUAL MEMORIAL SERVICE AT FEDERATION HOUSE, 67A ABERDARE ROAD CESSNOCK, COMMENCING AT 10.30AM ON 11 SEPTEMBER 2022.



## OTR AUSTRALIA WHEEL TESTING & REPAIRS

BLAST | MAGNETIC PARTICLE TEST | VISUAL INSPECTIONS | CRACK TEST REPORT  
PAINTING | STAMPING OF DATES | CONFORMANCE CERTIFICATES

ABILITY TO INSPECT OTR WHEELS & RIMS WITHIN A 5-7 DAY PERIOD

The process of testing a Wheel/Rim is critical and generally made up of three parts, being Blasting, Testing and Re-Painting, however a critical part to any testing process is the continual visual inspection carried out throughout the testing process. This includes checking for wear, corrosion and mechanical damage. Throughout the years, OTR Australia has been involved in the development of the Australian Standards for "earthmoving machinery - off-the-road wheels, rims and tyres - maintenance & repair". OTR Australia adheres to AS4457.1-2007, along with its own repair and maintenance guidelines document.

SALES PHONE 1300 791 672 | www.otraustralia.com  
Please send us an email with any enquiries to sales@otraustralia.com

Yatala, QLD | Perth, WA | Mildura, VIC | Muswellbrook, NSW | Emerald, QLD | Karratha, WA | Port Hedland, WA | Kalgoorlie, WA

FORMERLY TITAN AUSTRALIA

OTR Australia  
TYRES • WHEELS • AXLES



WIN!

CARDS FOR KIDS

Ultimate Kids Gift Card

COTTON-ON KIDS

DYMOCKS

JB HI-FI

TOY WORLD

TIMEZONE


rebel

EVERY KID WILL LOVE THE ULTIMATE KIDS GIFT CARD. EVEN THE BIG ONES!

Want a great book to read? New headphones? Or perhaps a soccer ball to kick around? The options of what you can buy are endless with the Ultimate Kids Gift Card.

FOR YOUR CHANCE TO WIN A \$30 GIFT CARD, SIMPLY SMS: KIDS RULE, YOUR NAME, AND YOUR EMAIL ADDRESS TO 0438 474 290.

LIMIT OF ONE ENTRY PER PERSON. BY SUBMITTING AN ENTRY, YOU CONSENT TO THE USE OF YOUR CONTACT DETAILS FOR PROMOTIONAL AND MARKETING PURPOSES.



LEARN FROM THE  
LAWMAN

STUART BARNETT IS OUR MINING INDUSTRY'S LEADING PERSONAL INJURY LAWYER. THIS MONTH HE HAS SOME IMPORTANT ADVICE ABOUT YOU RIGHT TO CLAIM FOR PROPERTY DAMAGE IF YOU HAVE AN ACCIDENT DURING THE COURSE OF YOUR EMPLOYMENT IN THE MINES.

In the event that you are unfortunate enough to have an accident at work, whether or not you are injured, if you suffer damage to certain types of personal property then the Workers Compensation Legislation allows you to claim for the repair or replacement of those items. The requirement is that it is a workplace accident, or to put it another way, an accident arising out of or in the course of your employment. For Coal Miners that would include accidents on the way to and from work.

THE ENTITLEMENT TO CLAIM FOR PROPERTY DAMAGE, WHICH INCLUDES REPAIRS OR REPLACEMENT, FALLS INTO TWO



This is general advice and because your individual circumstances will vary, I recommend seeking out specific advice for your needs.

STUART BARNETT,  
SLATER & GORDON LAWYERS

MAIN CATEGORIES DESCRIBED AS ARTIFICIAL AIDS AND CLOTHING.

Examples of the types of artificial aids and devices include artificial eyes, false teeth, crutches, artificial limbs or prothesis and spectacles. Clothing speaks for itself but would include the clothing you had on or with you at the time of the workplace accident and the provisions allow for repair or replacement.

There are limits to the amounts that can be claimed and these are set in the legislation and guidelines and are indexed from time to time. There is however provision to make an application to the Court for additional amounts over and above the prescribed amount in special circumstances.

Perhaps not surprisingly, you are unable to claim if the accident occurred as a result of your serious and willful misconduct or if the artificial aids or clothing were intentionally damaged.

In addition to the cost of the actual repairs or replacement, the service costs of professional or qualified persons is also payable, for example, the costs of consultations, appointments, service fees and the like. The workers' wages in attending on those consultations are also payable.



## WELDING INDUSTRY GOES COLD

TIME IS MONEY IN BUSINESS, AND DOWNTIME ESPECIALLY CAN COST THE MINING INDUSTRY BIG TIME. A NEW LOW PRESSURE COLD SPRAYING OF METALS IS REVOLUTIONISING THE APPROACH TO MANY CHALLENGING SITUATIONS TO KEEP MACHINES MOVING AND COSTS DOWN.

The ability to repair difficult or exotic metals is something any person involved in the maintenance and repair of equipment dreams of. One company we know, Titomic, has developed a new low-pressure cold spraying technology to change the way repairs are completed with their Australian partner Brauntell. Brauntell is a leading engineering company servicing the mining industry and have been receiving widespread interest in this new approach to heavy equipment repairs.

What is low-pressure cold spray? Not dissimilar to welding it allows for the deposition of metal powders onto many surfaces. It uses compressed air at supersonic speeds to enable metal powders to bond to surfaces such as plastic, glass, aluminium, bronze and cast iron. This is simplifying the repair process while improving profitability and reducing wasted componentry.

In the last 40 years, cold spray has typically been used in the remanufacturing of engine components, gearboxes and pumping equipment. The system is comprised of a hand-held spray

gun, two powder feeders and a touch screen controller in an IP50 case. Using metal powder, compressed air, and single-phase power, it can repair damaged components to original conditions in only a few minutes.

THE FIRST ADVANTAGE OF COLD SPRAY IS SAFETY IMPROVEMENTS. AS EVERYONE IN THE MINING INDUSTRY IS AWARE, SAFETY ISN'T SOMETHING TO BE TAKEN LIGHTLY AND BRAUNTELL HAS SEEN AN IMMEDIATE IMPACT FROM USING COLD SPRAY ON THEIR NEWEST PROJECTS.

Some of the other benefits of utilising cold spray over traditional welding methodology include a maximum surface heat 50 – 60 degrees Celsius and no pre or post heating required. It can work with small patch repairs and on dissimilar metals and it is NDT & UT compliant.

Brauntell has recently been testing the deposition of metal powders on nickel based shaft refurbishment, aluminium gearbox housings, chromium carbide pressing moulds, butterfly valve housing, impeller/propeller casting defects and fuel tank refurbishment. They are also conducting workshop demonstrations and technical job assessments on traditionally uneconomical repairs.

“We are looking for the too hard jobs to try and help the industry become more efficient,” said Josh Folpp from Brauntell. “We would love the opportunity to assist our mining community with a new tool in the toolbox to help them get things done in a better, more efficient and effective way.”

Within the mining industry, the Titomic cold spray system has real potential to become an industry requirement. The future of innovation has never been brighter.



Upper Hunter Mining Dialogue

REGISTRATIONS ARE NOW OPEN TO ATTEND THE UPPER HUNTER MINING DIALOGUE'S COMMUNITY FORUM ON WEDNESDAY, NOVEMBER 16 AT THE MUSWELLBROOK RSL CLUB.

With an overarching theme of diversification and what it means to the evolving economy of the Upper Hunter, this year's Forum will bring together mining, government and community representatives to understand the key issues, concerns and opportunities that need to be addressed to ensure the Upper Hunter and its residents can look forward to a strong future.

Community members are strongly encouraged to attend the free Community Forum. Registration details and further information about the Forum can be found at: [miningdialogue.com.au/engagement/2022-community-forum](http://miningdialogue.com.au/engagement/2022-community-forum)

AS WELL, THE DIALOGUE'S SCHOOL MINE TOURS PROGRAM HITS THE ROAD AGAIN IN SEPTEMBER AFTER TAKING A "WINTER RECESS" IN JULY AND AUGUST. THE DIALOGUE HAS NINE TOURS SCHEDULED IN SEPTEMBER FOLLOWING 18 TOURS ALREADY COMPLETED THIS YEAR FROM APRIL TO JUNE.

The Dialogue is also planning to hold a Pasture Restoration Field Day which will showcase successful pasture rehabilitation by Upper Hunter mining companies. The field day will bring together agronomists, government and mining and other local industry members to share information on pasture establishment and view pasture rehabilitation first-hand. More information on the Pasture Restoration Field Day will be released as details are finalised.

Annual reports for two of the Dialogue's ongoing environmental projects are also being finalised. Data is being collated for the Rehabilitation Principles and Commitments and the Water Accounting Framework projects for discussion at the upcoming Joint Working Group meetings.

The rehabilitation project records the amount of land disturbed by mining in a year compared with how much mined land is rehabilitated during the same time frame, while the water project documents how much water is extracted annually from the Hunter River by mining and other Upper Hunter water users. Reports on both projects will be released soon.

COXONS

NSW's only recognised Mesabi Service Centres Singleton & Newcastle

➤ Nosecone & Service Exchange

➤ Mining specialists

➤ Rail, industrial and heavy haulage

➤ Mesabi and MineCool component sales

Singleton & Newcastle  
1300 269 667

Performance Under Pressure

coxonsgroup.com.au







Minning for the future



SCAN FOR MORE!

RECRUITING NOW!

APPLY NOW - [HR@nwminingcompany.com](mailto:HR@nwminingcompany.com)

NOTHING BUT THE BEST - NORTHWEST

• Multi-skilled Operators

• Plant Mechanics

• Heavy Vehicle Mechanics

• Light Vehicle Mechanics

• New to Industry TA's

17-19 Thomas Mitchell Drive, Muswellbrook NSW 2333 | (02) 6543 2307 | [admin@nwminingcompany.com](mailto:admin@nwminingcompany.com) | [www.nwminingcompany.com.au](http://www.nwminingcompany.com.au)

12 SEPTEMBER 2022 | @ THE COALFACE

@ THE COALFACE | SEPTEMBER 2022 13





# GOVERNMENT GRANTS OPEN

OPINION

IT HAS BEEN A BUSY FEW WEEKS ACROSS THE HUNTER ELECTORATE AS I CONTINUE TO FIND MY FEET AND SETTLE INTO THE ROLE. I HAVE BEEN MEETING AND VISITING AS MANY PEOPLE AND ORGANISATIONS AS I CAN TO HEAR FIRSTHAND THE ISSUES THAT ARE IMPORTANT TO YOU.

This week I will have Senator Tony Sheldon, who is the Special Envoy for Disaster Recovery, in the electorate. Tony is working alongside the Minister for Emergency Management, Murray Watt, to ensure much-needed support is delivered to communities when natural disasters hit. I will be taking Tony to the areas most impacted by the recent floods so he can see first-hand the damage caused and provide feedback to the Minister.

On 1 and 2 September, the Prime Minister will convene a Jobs and Skills Summit in Canberra which will bring together around one hundred representatives from unions, employers, civil society, and governments, to address shared economic challenges.

The Jobs and Skills Summit will play a key role in addressing the challenges of rising inflation and interest rates, falling real wages and a trillion dollars of debt.

The goal of Government is building a bigger, better trained, and more productive workforce; boosting incomes and living standards; and creating more opportunities for more Australians to get ahead and to reach their aspirations.

Given the limited numbers attending the Canberra Jobs and Skills Summit, I will be holding some local Jobs and Skills Roundtables to help inform the outcomes of the Summit and the development of the White Paper. Senator Tony Sheldon will be joining me for these roundtables.

**THIS WEEK THE GOVERNMENT OPENED THE VOLUNTEER GRANTS PROGRAM. GRANTS OF BETWEEN \$1,000 AND \$5,000 ARE AVAILABLE TO HELP COMMUNITY ORGANISATIONS TO SUPPORT THE EFFORTS OF LOCAL VOLUNTEERS.**

The grants can be used to buy small equipment for volunteers or for the reimbursement of volunteer fuel, transport, or training costs. Grant funds can also be used to promote awareness and increase participation in volunteering opportunities. Locally there is a total of \$66,225 for the Hunter electorate. Applications close with my office on 19 September and more information on how to apply can be found on my website [www.danreapholimp.com](http://www.danreapholimp.com)

Another round of the Local Sporting Champions program has also opened. The Program recognises talented sporting individuals aged 12-18 in the Hunter electorate who

have excelled in sport and represent their team at state, national and international sport championships. The grants of up to \$750 each are provided to assist in the costs of travel, accommodation, uniforms, and sporting equipment for young people aged 12-18 who compete at a state-level or higher. Round 2 Applications are now open and close at 11:59pm on 30 September 2022. Details can be found on my website.

Parliament will resume on 5 September and I will be making my first speech on Monday 12 September. I will be posting details via my newsletters and social media as to the exact time so you can tune in if you like.

You can keep up to date with everything that is happening in Parliament and across the Hunter electorate by following my social media channels and if you have any issues or questions relating to any Federal Government departments or any of the work being done in Parliament, please make sure you get in touch through my office on 4991 1022.

**Dan Repacholi MP**  
**Federal Member for Hunter**

**'AVE A LAUGH WITH**

HUNTER VALLEY

**Hydraulink**

Hose and Fittings

**BEST UNDER PRESSURE**

You know you're getting old when it feels like the morning after. But there was no night before.

**02 6571 1625**

[hvhydraulink@bigpond.com](mailto:hvhydraulink@bigpond.com)

2 Mathry Cl, Singleton NSW 2330



RECENTLY WE WERE INVITED TO TORQUE ENTERPRISES AT RUTHERFORD TO MEET THE TEAM AND FIND OUT HOW THIS FAMILY-OWNED BUSINESS IS DOMINATING THE MARKET IN UNDERGROUND LHDs.

10 years ago, Torque Enterprises (TE) started with an idea from Torque Enterprises Directors Bevan Garioch, John Watkins and Dan Carter to take your ordinary LHD and turn it into a Titan. In 2018 TE successfully manufactured their first LHD and it's grown exponentially from there, with the 45th Torque Titan Explosion Protected LHD about to be delivered to a NSW underground coal mine.

It's not often you get to see a shiny new Australian Manufactured LHD before it heads into the depths of an underground coal mine, and Manager Brad Newton and workmate Dave Haddow were only too happy to give me the run through of its impressive capabilities. This is a team that are extraordinarily proud of what they are doing.

**"EVERY UNDERGROUND MINE RELIES ON THESE MACHINES AND ON MOST SITES THEY ARE OUTDATED," SAID BRAD. "WHAT WE HAVE DONE IS INTRODUCE NEW ADVANCEMENTS TO MAKE IT SAFER, MORE PRODUCTIVE AND MORE RELIABLE."**

Brad explained how they have combined all the good ideas from leading underground utility vehicle manufacturers and then taken it to a new level with the introduction of their own new technology.

"We have invented a new explosion protected diesel engine system design which has set a new benchmark in productivity, diesel particulate management and gaseous emission control. Plus,

reducing the whole of life running cost," shared Brad proudly.

They are the only locally manufactured supercharged LHD's, where all others are turbo, and there's plenty of bells and whistles that make these LHD's outclass what's available on the market. From engine temperature monitoring and automatic shutdown systems to a modern hydraulic pump and control system which allows the machine to deliver controlled hydraulic flows for high and low flow applications.

A key design criteria was also increasing visibility, such as adapting the boom design to allow operators clear visibility to the QD plate and a frame and canopy design which maximises visibility across the top of the machine.

They've also taken operators into consideration, with the operator's cabin designed to maximise operator comfort levels while working within the overall machine width requirement for an LHD that is working in a mine environment.

If I'm being honest, much of the machine's capabilities go over my head, but the Australian underground coal mining industry is certainly in agreement that these LHD's are outclassing the competition, with demands coming in faster than they can get them out of the workshop. They are well on their way to becoming the leading supplier of LHDs. Or as Dave said with a laugh, "We are on our way to world domination."

What I can easily understand is that everyone who works in this family-owned business is proud of what they are achieving. It was Brad who contacted us to share this story.

"It all started with a dream of Bevan, John and Dan to make the best LHD and the Torque Enterprises team deserves recognition for making that happen. Torque Enterprises Directors are the kind of bosses you can ring up on a Saturday night and they are happy to assist. The Torque Enterprises Group are so passionate and when a new idea pops up on how the TE product range can be improved the TE team do our best to see it come to fruition. It's by the entire team working together that we have reached this milestone and it's only the beginning," said Brad.



100 years of protecting

When Coal Services was founded in 2002, it built on the legacy of its predecessors who for decades had served to protect the NSW coal industry and its workers. Today, our purpose remains, 'To Protect'.

[www.coalservices.com.au](http://www.coalservices.com.au)

 Coal Services

**100** years of protecting

**BUILT FOR EXTREMES**

Cutting-edge dewatering and water transfer pumps built to withstand the harshest conditions.

- PUMP TYPES**  
Trufluo Vac Assist | Slurry | Varisco
- PUMPSETS**  
Diesel | Electric | Hydraulic
- PUMP MOUNT CONFIGURATIONS**  
Skids | Trailers | Pontoons | Inline
- SPECIALISED PUMPS**  
Slurry Pumps | Flame-proof Pumps | Fishtank Pumps | Submersible Pumps | Dredge Pumps | Jumbo Pumps | Helical Rotor Pumps
- ANCILLARY EQUIPMENT**  
Truck Fillpoints | Sound Enclosures | Breaktanks.

 **1800 813 677**  
[www.trufloupumps.com.au](http://www.trufloupumps.com.au)



  
Skid Mounted TF140/100 Diesel Pump with A-Frame

  
TF400/40 Skid mounted pumpset with truck fill point



# A LEAGUE OF OUR OWN



COAL MINERS THROUGHOUT THE HUNTER VALLEY AND BEYOND HAVE HAD TO WAIT OVER TWO LONG YEARS FOR THE RETURN OF THE TRADITIONAL BATTLE OF THE MINES IN THE ANNUAL A-PLUS CONTRACTING HUNTER VALLEY MINING CHARITY RUGBY LEAGUE DAY IN SUPPORT OF THE WESTPAC RESCUE HELICOPTER SERVICE.

Each year the event continues to grow in popularity and despite multiple postponements due to pandemic restrictions and adverse weather conditions all roads will lead to Pirtek Park Singleton on Saturday, September 17 for what will be a return to normality.

The day will see 13 men's teams and two women's teams battling it out for bragging rights and the converted Charity Shield. All teams will compete in a 10's format competition with 10 players on the field playing 10 minute halves. Each men's team will play a minimum of two games before the highest points scorer in each pool will advance through to a sudden death semi-final, before the winner of each semi competes in the Grand Final. Whilst the women's teams will battle it out in a best of three series as part of the Women in Mining Championship.

**WHILST THE FOCUS OF THE DAY WILL BE ON THE ACTION HAPPENING ON THE FIELD, THE IMPORTANCE OF THE DAY IS NOT LOST ON THE PLAYERS OR SPECTATORS WITH \$120,000 RAISED AT THE LAST EVENT IN OCTOBER 2019 FOR THE WESTPAC RESCUE HELICOPTER SERVICE.**

Event Manager and the Rescue Helicopter Service's Regional Partnerships Officer, Danny Eather believes that despite the multiple postponements that the day is still going to be a resounding success given the continued support of participants, event partners and sponsors.

"I like many, was disappointed that we had to postpone the event multiple times during these past two years, for the right reasons of course, however since announcing the return of the event back to the calendar the anticipation has been building and I am so looking forward to standing on the hill at Pirtek Park seeing a full field of participants and spectators," said Mr Eather.

"The continued support we have received from the players, our sponsors and the wider community has been heartening and I guess that is why the event has grown to become the highlight of the local events calendar. This event offers something for everyone and ultimately celebrates the community's love of rugby league, local miners and the vital lifesaving work undertaken by their Rescue Helicopter."

Westpac Rescue Helicopter CEO Richard Jones OAM echoed Mr Eather's sentiments about the event.

**"THE RUGBY LEAGUE COMMUNITY AND MINING INDUSTRY HAVE ALWAYS BEEN GREAT SUPPORTERS OF THE SERVICE. THIS EVENT BRINGS BOTH GROUPS TOGETHER IN A UNIQUE COMPETITION IN SUPPORT OF THE RESCUE"**



**HELICOPTER AND WE GREATLY APPRECIATE THE ONGOING SUPPORT OF SPONSORS, PLAYERS AND SPECTATORS,' JONES SAID.**

"Personally I cannot thank the community enough, not only for their support but also their understanding during the challenging times we have navigated during the past two years."

All the action of the day will commence from 9am with the first of pool games kicking off, with the finals expected to get underway at 4pm. Off the field there will be childrens activities, giveaways and additional fundraising by way of raffles.

**ENTRY IS JUST \$10 PER PERSON WITH THOSE 16 YEARS AND UNDER FREE OF CHARGE.**

Prepurchase of tickets via the website is strongly encouraged to reduce congestion at entry.

**TICKETS CAN BE PURCHASED AT WWW.CHARITYRUGBYLEAGUEDAY.COM.AU/TICKETS**



Voice for Mining Family Day  
21 August 2022  
Newcastle Knights v Canberra Raiders



Thank you to the thousands of Newcastle Knights fans and Hunter mining families that joined us at the 10th annual Voice for Mining Family Day.

The team proudly wore the 10th anniversary edition of the mining jersey to celebrate our mining communities and the good things mining brings to NSW. We can't wait to do it again in 2023.

[voiceformining.com.au](http://voiceformining.com.au)



## EVERYONE IS WELCOME

WITH GUIDANCE FROM THE WONNARUA COMMUNITY, MT ARTHUR COAL HAS CREATED A YARNING CIRCLE AT THE ENTRANCE TO THEIR MAIN BUILDING AS AN ACKNOWLEDGMENT TO ALL TRADITIONAL CUSTODIANS OF THE LAND. THE YARNING CIRCLE WILL PROVIDE A PLACE TO REFLECT AND ALLOW THE CONVERSATIONS TO CONTINUE AROUND CULTURE, CONNECTION, INCLUSION AND DIVERSITY WITHIN THEIR WORKPLACE AND THE COMMUNITY.

The Yarning Circle was the perfect spot to sit down for a conversation with the team responsible for its creation. With the culturally significant Mount Arthur summit overlooking in the background and surrounded by native trees and plants, it was easy to see why this space encourages conversation and reflection.

I was joined by Sarah Bailey, Manager Approvals, Land, Access & Heritage for NSW Energy Coal, and Damien Williams, Theresa

Trickey and Jacob Heard from Mt Arthur Coal's Technical Services. Damien, Theresa and Jacob were tasked with organising events for National Reconciliation Week and Sarah shared how they went above and beyond.

"There were so many great ideas put forth and when asked which one they wanted to do the response was all of them!" said Sarah with a smile. "Fortunately, we were supported wholeheartedly by the company in making them all happen. It was

L-R JACOB HEARD, (MT ARTHUR COAL TECHNICAL SERVICES), THERESA TRICKEY, (MT ARTHUR COAL TECHNICAL SERVICES), SARAH BAILEY (MANAGER APPROVALS, LAND, ACCESS & HERITAGE FOR NSW ENERGY COAL) DAMIEN WILLIAMS (MT ARTHUR COAL TECHNICAL SERVICES)

amazing how everyone dropped everything and put their hands up to be involved. I have to commend Damien and his team for their passion and how they led this."

During the week, the team organised toolbox talks and presentations, Indigenous art workshops, a workforce breakfast and even a colouring competition. Underlying the week's events was the mission to increase the workforce's understanding of the history of Indigenous people. Which is something the Yarning Circle will do, not just for one week of each year, but for every single day.

**"THE YARNING CIRCLE, WHICH WAS THERESA'S IDEA, IS REALLY A WONDERFUL VISUAL STATEMENT THAT ENCOURAGES COMMUNICATION AND ENGAGEMENT - WITH EVERYONE BEING EQUALS," SAID SARAH.**

"It provides a way to come together to collaborate and communicate in a trusting, safe and respectful way where, most notably, participants sit in a circle formation so everyone can face each other. One of the wonderful benefits of a Yarning Circle is the symbolism that everyone's contribution is equally important, and it promotes active listening, sharing, trust, and is a harmonious, inclusive and respectful way to communicate."

Mt Arthur Coal acknowledges the Traditional Custodians of the land, the Wonnarua people. We pay our respect to all Elders past, present and emerging, and we recognise their continuing connection to the land, water and culture. We wish to express our gratitude and a deep appreciation to the generations of Wonnarua people who have been involved in the ongoing management of Aboriginal cultural heritage at Mt Arthur Coal. The cultural knowledge shared by the Wonnarua people over many decades, has assisted in ensuring that Aboriginal cultural heritage values are appropriately incorporated in the day to day management of the mine.

To bring the project to fruition and ensure meaningful collaboration, they engaged with seven different local indigenous businesses. The project is not quite finished, as they have a sign still to go up which is being manufactured by an Indigenous company and are also arranging for each of the Wonnarua Totems to be etched into the back of the sandstone blocks, at the request of an Elder. However, the Yarning Circle is already a favourite spot for the workforce to come together.

"We hope not only will this be a place that the workforce can enjoy and connect with, but that it will provide many opportunities in the future to strengthen our knowledge and connection of the Wonnarua people and their heritage," said Sarah.

## IF IT'S BROKE, GLENCORE WILL FIX IT

WE'VE ALL HEARD THE SAYING IT TAKES A VILLAGE TO RAISE A CHILD, AND IT'S TAKING THAT AND MORE TO PUT BROKE BACK TOGETHER AFTER THE VILLAGE WAS INUNDATED WITH FLOODWATERS IN JULY.

Some residents in the tight-knit community say it's the worst flood they've seen in 70 years and by the time they found out how bad it was going to be it was too late to leave.

An east coast low dropped an unprecedented amount of rainfall on the Hunter region flooding the Wollombi Brook washing entire roads away and creating sinkholes in people's backyards. Once the water drained away houses were left with piles of soggy furniture and belongings stacked out front. Residents are still cleaning up with some unable to return home yet facing repair bills upwards of \$80,000.

The community has come together to rebuild with the help of many including Glencore mine workers who have been lending their muscle to help residents clean up from the very moment they could get into the village when the floodwater drained away.

The mine workers are no stranger to helping Broke in times of need with one of their bigger mines, Bulga Open Cut neighbouring the township.

Operations Manager Dave Foster said they consider themselves

a big part of the community so they had to help.

"We thought it was a really good time to help a neighbour out since we had the resources that they needed at the time so we just wanted to help out where we could," he said.

"When we first put it out to our employees that we wanted to head into the Broke village and help out, out of a crew of about 100 people, probably more than 50 per cent put their hand up so it was a real willingness from the whole workforce to help out.

"We've had a number of those employees who are actually impacted in the Bulga village and have really chosen to help their community out first and foremost rather than their own houses. **"BULGA WAS CERTAINLY THE FIRST ON THE GROUND, WE'RE CLOSEST TO THE COMMUNITY. BUT WE PUT THE CALL OUT TO ALL OUR GLENCORE SITES IN THE HUNTER VALLEY AND JUST ABOUT EVERY SITE CHIPPED IN AS BEST THEY COULD WHICH IS AWESOME. IT'S BEEN A REAL TEAM GLENCORE EFFORT ON THE GROUND AT BROKE FOR SURE," HE SAID.**

Bulga Open cut workers put the call out to all of their mines in the Hunter Valley and workers from Glendell, United Wambo, Ravensworth and Liddell stepped up to help out with manual labour, they provided trucks to haul material, a vacuum truck to pump out septic systems, excavators, trailer pumps, electricians, civil engineers, a generator for the community hall, water tankers and a coffee van to help out with some catering.

"Certainly in the first week there was a lot of effort around bulk clean-up work so we provided anywhere between 10 and 20 employees doing physical labour like cleaning out flood affected houses and yards and so forth as well as pumping out a lot of water that is still lying around in people's backyards," said Dave.

"But there's still lots of ongoing pumping works, there's lots of low lying water still sitting around in backyards and other areas."

Singleton Council engineers have been working with residents and Glencore as well as other local businesses to make roads in and around Broke



as usable as possible since the floodwaters subsided.

Council quickly got to work constructing a temporary side track along Broke Road given the likelihood that actually fixing the road will take some time. The side track is a single lane with a 4.5t load limit with traffic lights.

It took some weeks, but residents were also given access to the same flood funding places like Lismore received earlier this year which included \$20,000 grants to help residents get back into their homes.

**SO SLOWLY, PIECE BY PIECE RESIDENTS IN BROKE IS REBUILDING. BUT SOME RESIDENTS ARE STILL DISPLACED AND STILL TRYING TO PUT THEIR LIVES BACK TOGETHER. YOU CAN HELP TOO. THERE'S A DONATION PAGE, HEAD TO THE BROKE RESIDENTS COMMUNITY ASSOCIATION INC. FACEBOOK PAGE TO FIND THE BEST WAY TO HELP OUT.**



NEW AND USED SALES ■ HIRE ■ PARTS ■ SERVICE

YOUR LOCAL FORKLIFT SPECIALISTS

- Mine Site Compliant Forklifts
- Any Brand of Forklift
- Any Configuration



- Qualified Mechanical and Auto Electrical Technicians
- Mine site inducted
- Licenced Air Conditioning Repairer



### MLA Vulcan 16T

- 16 tonne forklift
- 2400mm Fork Tynes
- Mine Spec
- Available for long term hire or purchase



PHONE 4967 4622 | [www.huntermla.com.au](http://www.huntermla.com.au)



PROVIDING SOLUTIONS FOR THE HUNTER VALLEY, NEWCASTLE, CENTRAL COAST AND MID NORTH COAST







PROUD PARTNERSHIP

THE WESTPAC RESCUE HELICOPTER SERVICE IS THRILLED TO ANNOUNCE THAT YANCOAL HAS RENEWED ITS PARTNERSHIP FOR THREE MORE YEARS, CONTINUING ITS SUPPORT OF THE VITAL EMERGENCY SERVICE THROUGHOUT NORTHERN NSW.

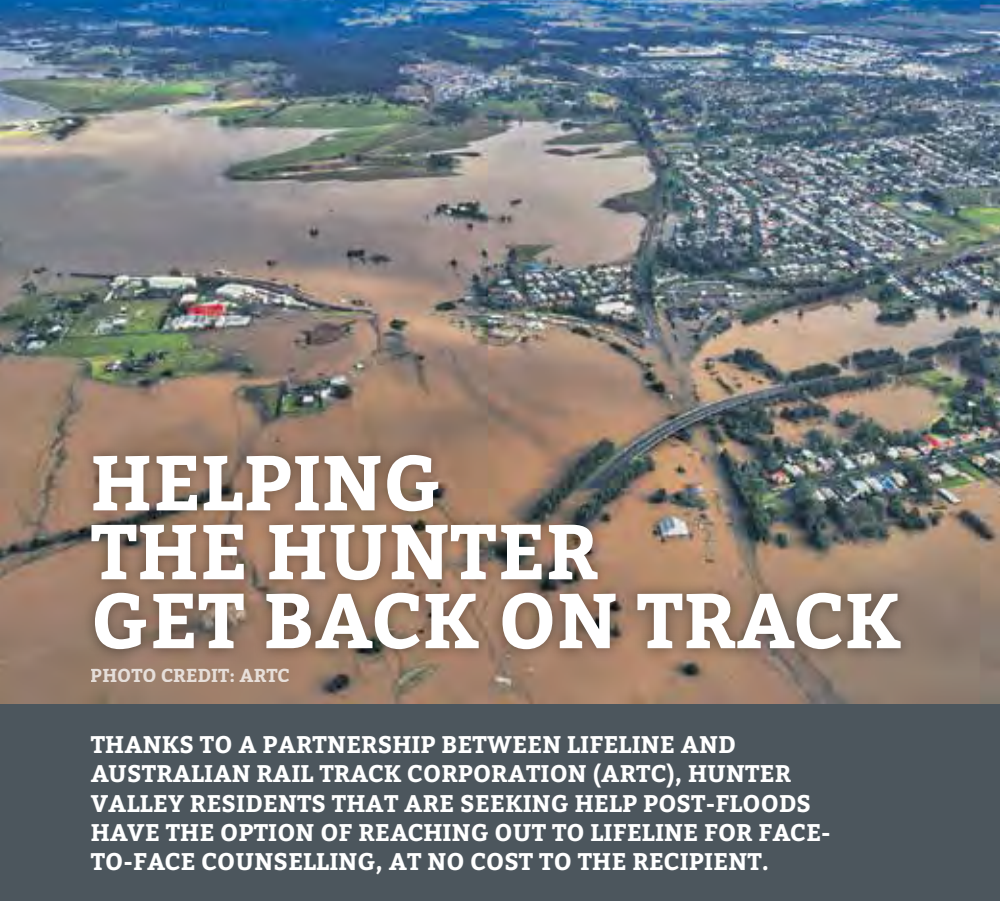
Having been a major sponsor of the Westpac Rescue Helicopter Service since 2019, Yancoal is now proud to announce a renewal of its commitment of \$500,000 each year for the next three years to help ensure this critical service remains available to all people across NSW. In addition to this corporate sponsorship, Yancoal employees also support the service directly through a payroll deduction program. The partnership was recently celebrated with an event at the Belmont base with representatives from Westpac Rescue Helicopter Service and Yancoal to

commemorate the funding boost and acknowledge the lifesaving service they provide to the community. Yancoal's logo will continue to sit proudly on both sides of the four (4) AW139 Westpac Rescue Helicopters and will be represented throughout the corporate stationery and official website of the Service. The Service operates 24-7 from three bases in Belmont, Tamworth and Lismore and provides invaluable support in times of crisis for 1.5 million people throughout Northern NSW. Chief Executive Officer of the Westpac Rescue Helicopter, Richard

Jones OAM used the announcement to recognise the support of Yancoal and its staff throughout NSW. **"WE'VE BECOME A UNIQUE SERVICE AND WE'RE HERE TO SUPPORT THE COMMUNITY EVERY MINUTE OF EVERY DAY. OUR WORK CONSISTS OF PRE-HOSPITAL EMERGENCY RESPONSE, SEARCH AND RESCUE AND INTER-HOSPITAL TRANSFERS AND OFTEN WE'RE CALLED TO HELP PEOPLE WHEN OFTEN THEY'RE HAVING THE WORST DAY OF THEIR LIFE."** The continuation of Yancoal's corporate support for another three years will take our partnership to

L-R: DAVID MOULT (YANCOAL AUSTRALIA CHIEF EXECUTIVE OFFICER) AND RICHARD JONES OAM (CHIEF EXECUTIVE OFFICER OF THE WESTPAC RESCUE HELICOPTER)

a new level, and help us to deliver a service that is truly leading in many respects, considering the flight capability of the Pilots and Aircrew, along with the incredible skills of the Critical Care Paramedics and Doctors that fly to the scene of every accident. In addition to Yancoal's corporate support, its staff have also been donating from their pay for many years and this is a vital element for our emergency response capabilities and continual improvement of our operations. "One thing that has impressed me about mining is its commitment to continual improvement in safety and Yancoal is demonstrating its leadership in protecting not only its own people but those in our community more broadly," Mr Jones said. Yancoal Australia Chief Executive Officer David Moulton delighted in extending the partnership with the Westpac Rescue Helicopter Service. "We have a significant presence in the Hunter Valley and by continuing our partnership for another three years, the funding reflects our commitment to give back to the people who live, work and play in this fantastic region. "The past year has been challenging due to weather events and we wanted to provide assurance and certainty that we are committed to this partnership and working together for the benefit of the community. **"THE WESTPAC RESCUE HELICOPTER SERVICE PLAYS A CRITICAL ROLE IN PROVIDING SAFETY AND SUPPORT TO LOCALS IN NEED AND WE ARE VERY PROUD TO SUPPORT THIS GREAT SERVICE," MR MOULT SAID.**



HELPING THE HUNTER GET BACK ON TRACK

PHOTO CREDIT: ARTC

THANKS TO A PARTNERSHIP BETWEEN LIFELINE AND AUSTRALIAN RAIL TRACK CORPORATION (ARTC), HUNTER VALLEY RESIDENTS THAT ARE SEEKING HELP POST-FLOODS HAVE THE OPTION OF REACHING OUT TO LIFELINE FOR FACE-TO-FACE COUNSELLING, AT NO COST TO THE RECIPIENT.

The partnership between ARTC and Lifeline has been in place for over a year and is instrumental in providing essential support to the Hunter Valley region in the form of face-to-face counselling. Lifeline Counselling is an additional service to Lifeline's 13 11 14 crisis support line and the funding provided by ARTC allows those in need to access counselling at no cost and with no referral required from a GP. ARTC suffered significant damage and disruption from the latest floods and so they know firsthand how hard it can be to rebuild and

recover. Wayne Johnson, Group Executive Hunter Valley Network, ARTC says they understand what a tough time the Hunter Valley has been through and wanted to help in a meaningful way. "ARTC is proud to be able to continue our partnership with Lifeline enabling the delivery of the face-to-face counselling service which

LIFELINE'S FREE FACE-TO-FACE COUNSELLING IS OFFERED MONDAY TO FRIDAY AT ISLINGTON AND AT OUTREACH LOCATIONS IN SINGLETON, RAYMOND TERRACE AND CESSNOCK. TO MAKE AN APPOINTMENT CALL 1300 152 854.

is instrumental in supporting the mental health and wellbeing of people across the Hunter region, as they cope with the last few years and more recently, many people in the region impacted by the floods," said Wayne. "ARTC's core value of 'No Harm' goes hand-in-hand with Lifeline's purpose and proactive work they do in increasing and maintaining the discussion around mental health, and making sure it's an open discussion across this region. "Through ARTC's partnership with Lifeline we aim to highlight their important work, so that more people across the Hunter can access these essential services across the regions in which we operate." ROBERT SAMS, CEO LIFELINE HUNTER SAID THAT THE SUPPORT FROM ARTC IS VITAL FOR LIFELINE TO BE ABLE TO CONTINUE THEIR FREE FACE-TO-FACE COUNSELLING PROGRAM. "The devastating flooding events in our region have increased demand for support from Lifeline within the Hunter. "Private counselling and psychology can be expensive for people and there are long wait lists for public counselling, so Lifeline's service fills a much-needed gap for the community."



WAYNE JOHNSON, GROUP EXECUTIVE HUNTER VALLEY NETWORK, ARTC SERVING A PATRON AT A LIFELINE'S LOCAL BOOK FAIR WHERE ARTC STAFF VOLUNTEERED.



PHOTO CREDIT: ARTC

STUDENTS CELEBRATE CULTURE

MUSWELLBROOK HIGH STUDENTS HIT THE ROAD TO OLYMPIC PARK IN JULY FOR A DAY OF BELATED NAIDOC CELEBRATIONS THAT FEATURED TIGHTLY CONTESTED LEAGUE TAG GAMES, A BBQ LUNCH, CANVAS PAINTING AND PERFORMANCES BY RITCHIE LAWTON FROM BUDBUDDA DREAMING AND DANCERS FROM THE WAKAGETTI INDIGENOUS CORPORATION.



The activities provided an exciting opportunity for the students to celebrate and recognise the history, culture and achievements of Aboriginal and Torres Strait Islander peoples. It was an action-packed day with local primary schools also in attendance including Muswellbrook Public and Muswellbrook South Public School. Muswellbrook High School Learning and Engagement Teacher, Mrs Jones said, "We were lucky to not only have performances by Ritchie Lawton from Budbudda Dreaming and the dancers from Wakagetti Indigenous Corporation, but they also facilitated workshops with our students." In addition to the performances and workshops, the day featured three closely fought League Tag games. The Primary All Stars game, between local

primary schools, and Junior All Stars game, for years 7-9 students set the scene for the marquee Seniors All Stars game that closed out the day. MALABAR RESOURCES WAS THE MAJOR SPONSOR OF MUSWELLBROOK HIGH SCHOOL'S NAIDOC CELEBRATIONS, PROVIDING FUNDING AND VOLUNTEERS TO SUPPORT THE EVENT. Malabar Resource's Manager of Health, Safety, Environment and Community, Donna McLaughlin said, "We are proud to contribute to such an important day for our local schools and to celebrate the oldest, continuous living cultures on earth. "We were excited to hear the students had such a great time celebrating NAIDOC week and we were



so pleased to contribute to the event." Muswellbrook High School Learning and Engagement Teacher, Mrs Jones thanked Malabar, "Malabar's sponsorship helped us put on such an exciting NAIDOC celebration for our students and we are very grateful for their ongoing support for our school."

Australian owned and operated, The Bloomfield Group has been part of the Hunter Valley community for more than 80 years. We are proud of our commitment to our community. The less we say here, the more space left to mention the organisations we've recently supported...



- ▶ Australia for UNHCR (Ukraine) ▶ Australian Red Cross (NSW / Qld Floods) ▶ Australian Red Cross (Tonga)
- ▶ Beyond Blue ▶ Camp Quality ▶ CareFlight ▶ Carries Place ▶ Darlington Rural Fire Brigade ▶ Dungog A&H Association (Motor Neurone Charity Muster) ▶ East Maitland Public School P&C ▶ GIVIT Listed Ltd (NSW Floods) ▶ Hunter Medical Research Institute (Endometrial Cancer research) ▶ Lifeline Direct ▶ Maitland Heritage Festival ▶ Maitland Polocrosse Association ▶ Maitland Rugby Blacks Netball (Juniors) ▶ Maitland Show ▶ Mates in Mining ▶ Metford Primary School ▶ Motor Neurone Disease Research Australia ▶ Mt Pleasant Public School P&C ▶ Multiple Sclerosis Australia Research ▶ Rare Cancers Australia ▶ Salvation Army (Singleton and Newcastle) ▶ Singleton Business Excellence Awards 2022 ▶ Singleton Fire Brigade ▶ Singleton Hospital ▶ Singleton Legacy ▶ Singleton Neighbourhood Centre ▶ Singleton Netball Association (Juniors) ▶ South Cardiff Junior Football Club ▶ The Samaritans (Singleton) ▶ University of Newcastle ▶ Variety The Childrens Charity ▶ Westpac Helicopter Rescue Service ▶ Youth Off the Streets (Hunter).

For more information on The Bloomfield Group Foundation visit [bloomcoll.com.au](http://bloomcoll.com.au)

THE Bloomfield GROUP

WE CARE. WE DELIVER.





COMMUNITY GIFT

# MUSWELLBROOK FOODCARE

THIS MONTH THE COMPLETE PARTS AND @ THE COALFACE \$500 COMMUNITY GIFT GOES TO FOODCARE AT MUSWELLBROOK, A FANTASTIC LOCAL ORGANISATION WHICH HELPS TO ENSURE FAMILIES IN THE UPPER HUNTER NEVER GO HUNGRY.



Every Wednesday at 12pm at 88 Bridge Street, Muswellbrook, you'll find some amazing volunteers running a free BBQ, where everyone in the community is welcome to come along and enjoy a sausage sandwich.

More importantly, and of greater need, is they are also making sure that people who are doing it tough have access to food to feed their families through their shop Foodcare.

Foodcare Muswellbrook operates with the support of international organisation Global Care. They support individual communities to offer services that are needed in their region on a grass roots level.

Here in Muswellbrook, access to cheap and quality food for many

people is an issue that means they go without, or they are spending money that is needed for rent or petrol or other necessities.

Tania Cairns coordinates Global Care Foodcare in Muswellbrook's main street. Its doors are open to the public on Wednesday from 12noon to 4pm and Thursday and Friday from 9.30am to 4pm.

**EVERY WEEK, 150 FAMILIES FROM THE UPPER HUNTER COME ALONG TO FOODCARE. TANIA SAYS THE DEMAND IS INCREASING SINCE COVID AND HER GREATEST WISH IS THAT THEY COULD DO MORE, AS SO MUCH MORE IS NEEDED.**

"The store is self-funded, but we do receive some donations. We are extremely grateful for all the assistance we get from

community and businesses."

MACH Energy Australia Mount Pleasant Operations generously donated a BBQ, fridge and freezer and funding, they receive some bread from Coles in both Muswellbrook and Scone and from Bakers Delight each week, Aldi provide \$50 of fresh fruit and vegetables each week and the Chop Shop in Muswellbrook donates sausages for the weekly barbecue.

"Every donation matters and allows us to help more people," said Tania. "If we had even more resources like extra shelving or freezers then we could offer more. Anything to help us is appreciated."

It's a fantastic service they are providing but there is a real fear that by the end of the year that service

might come to an end. The building they are in is being redeveloped and at this stage they have no alternative premises to move to and so now more than ever they need the support of the community.

But the volunteers are all full of hope. And that's something the community is in short change of. Growing inflation means that even more people are going to need to turn to their services in the coming years. Tania encourages anyone who is struggling to reach out to them.

"I hope people who need our service come in the door or at least come have a sausage sandwich and learn a little more about us. When someone comes in, they are not just helping themselves, they are also helping us to help other people."



## ALWAYS ON CALL

**EARLIER THIS YEAR GLENCORE ANNOUNCED A PARTNERSHIP WITH LIFELINE HUNTER WORTH MORE THAN \$100,000. NOW THEY'VE CEMENTED THAT PARTNERSHIP WITH THEIR NEWEST 793D MINING TRUCK TRAY AT GLENDELL OPEN CUT PROUDLY DISPLAYING THE LIFELINE LOGO.**

L-R CHRIS DAVIS (GLENDELL MAINTENANCE MANAGER), SEBASTIEN MORENO (GLENCORE ECC MANAGER), PATRICK CALABRIA (LIFELINE HUNTER SENIOR BUSINESS DEVELOPMENT MANAGER), ROB SAMS (LIFELINE HUNTER CEO), CHRIS GERARD (GLENDELL OPERATIONS MANAGER)

can always reach out for help.

"The last couple of years have been tough on everyone to varying degrees with the pandemic. Plus, we also have changes happening here at Glendell and change always brings uncertainty or anxiety," said Chris.

**"THE TRUCKS SPEND A SIGNIFICANT AMOUNT OF TIME MOVING AROUND SITE. WE BASICALLY HAVE A BILLBOARD DRIVING AROUND EVERY DAY TO REMIND PEOPLE THAT THEY ARE NOT ALONE, AND THAT THEY ARE ENCOURAGED TO SPEAK OUT. IF IT SPARKS EVEN ONE PERSON TO HAVE A CONVERSATION THAT IT'S WORTH IT."**

The tray is the 14th and final of Glendell's replacement trays and cements not only a

Lifeline Hunter provides an invaluable service, always there to answer the call of people in times of crisis and ensure that no one faces their darkest moments alone. Now, with the unveiling of the new truck tray emblazoned with the Lifeline logo, the entire Glendell workforce will have a daily reminder that Lifeline is just a call away.

Chris Gerard, Glendell Operations Manager, said that the truck tray will act as constant reminder to the workforce that they are not alone, and they

**IF YOU NEED SUPPORT**, Lifeline's Crisis Support services is available 24hrs a day, 365 days a year. Call 13 11 14.  
**FIND IT HARD TO TALK?** Text 0477 131 114. Lifeline Text is available 6.00pm - Midnight (AEST), 7 days a week.  
**WWW.LIFELINEDIRECT.ORG.AU/HUNTER**

significant partnership with Lifeline, but also Glencore's commitment to the wellbeing of their workforce. Every Glencore site operates an Employee Assistance Program which is always available to employees and their families and this is further demonstration that as a company, Glencore always supports reaching out.

Hunter Lifeline CEO, Rob Sams said partnering with organisations like Glencore is critical to Lifeline being able to continue to be there for the people who need them.

"This is a huge deal for Lifeline. It's a reminder to everyone that we are here 24/7 if you need us. Day or night, whether by text, phone or chat, we will answer."

**'AVE A LAUGH WITH**

**HUNTER VALLEY Hydraulic Hose and Fittings**

**BEST UNDER PRESSURE**

Person giving directions: You can't miss it  
Dads: Challenge accepted

**02 6571 1625**  
hvhydraulic@bigpond.com  
2 Mathry Cl, Singleton NSW 2330

## Earthmoving Equipment Hire Specialists

We specialise in sourcing quality mining and civil class earthmoving assets, and providing clients with customised equipment rental and hire-to-buy purchase arrangements that add value to their business.

**DOZERS | LOADERS | GRADERS | EXCAVATORS | WATERCARTS | SERVICE TRUCKS**

**02 6571 1228 | 1 Caswell Terrace Maison Dieu Singleton NSW 2330 | www.empiremachinery.com.au**

## CAN'T FIND THE PART? WE CAN.

LATE MODEL, PRODUCTION-CRITICAL, HARD TO FIND OEM COMPONENTS, READY FOR DISPATCH.

view our inventory [dgitrading.com](https://dgitrading.com)

P +61 265 637 992  
E [salesaustralia@dgitrading.com](mailto:salesaustralia@dgitrading.com)



SUPPLIER INSIDER

Tell us about the business. Northwest Mining Company is a locally-owned and operated mine support business located in Muswellbrook. We offer equipment hire, automotive maintenance and repair, and onsite labour solutions to clients big and small across the Hunter.

How long have you been doing business? Northwest Mining Company was established in 2010 by Managing Director Shayne Clark. In 2014, as the company began to grow, our portfolio of services expanded with the purchase of Radar Auto Electrical and Mechanical Repairs. With the support of Radar's customers, Northwest Mining Auto was established.

How many people work for the business? Over the last 12 months, Northwest Mining Company has expanded its workforce to 90 people. We pride ourselves on having 87% of our employees based locally in the Hunter Region.

Describe a typical day at 'The office'. No two days are the same for any department at NWM! Most of our mornings will



kick off with a toolbox, site visits, emails and lots of coffee!

What's the best thing about the business? Even though the business is expanding, we still have that small business feeling. Everyone knows each other and the management team are all very approachable.

The worst thing? Rapid growth Vs steady expansion, we sometimes must miss great opportunities due to current forecasted growth. It can be a hard balancing act between client satisfaction and our internal business plans.

What are the biggest challenges facing your business? Skill shortages across both the mining and automotive industries. With everyone in the area struggling to recruit the same trades, companies are poaching each other's staff or entering into a bidding war over applicants.

What is the biggest opportunity for your business right now? Training and development of existing staff. With the current skill shortage, we are finding that training and upskilling our staff not only increases employee loyalty, but also assists the company with the shortage of trades.

What is the business most proud of? Our employees. We pride ourselves on our employee commitment and believe that the approachability of management and company culture, combined with our upskilling program, largely contributes to this.

Community or other causes close to its heart and values? Every year, NWM purchase the Beanies for Brain Cancer and make a donation to the foundation. Shayne, the owner of the business, is fortunate to be a positive brain cancer statistic so this foundation is close to home for us as a company.

Any funny or heartwarming stories to share? Our current recruitment campaigns, our team has gotten together to create some funny content! If you are after a laugh, just head over to our SEEK page and check them out.

Any employees that deserve a shout out? It's National Skills week this week so Northwest Mining would like to shout out to all of our trades people. From the light vehicle mechanics to the electricians. They are what keeps Northwest's wheel turning.



MY MINING LIFE

GRAHAM BATES

Who are you and what do you do? I am a family man and a crane operator with Monadelphous Engineering.

When did you start in the mining industry and what was your first job? I first started my mining life in 1987 as a tradesman assistant for A.N.I. Engineering, who did shovel and dragline, maintenance and rebuild, shutdowns.

How different is your job now to what you wanted to be when you were a kid? In my early years I had dreams of becoming a jockey, now I have worked my way up from being a T/A, assisting boilermakers and fitters, to spending most of my days operating Franna cranes and telehandlers on shutdowns. Working on draglines, shovels, and excavators at most opencut mines in the valley, as well as Ulan mine and

What's the biggest challenge you've had to overcome? There's always challenges, you just have to find the best way through them.

What has been your proudest achievement? My proudest achievement is simply that over the 35 years that I have worked in the mining industry, I have worked from the same engineering yard at Mt Thorley, through three different companies, A.N.I. Engineering, Ellavale Engineering, and Monadelphous Engineering.

What's something about your job that would surprise people to know? My job deals with high-risk work, so it's very safety orientated. I work with a great team of men and women and together we deal with a variety of jobs, both open cut, where we do dragline and shovel rebuilds and maintenance shutdown work, and at Coal Handling Prep Plants (CHPP).

What's a funny story about work that you can tell? A funny thing we did to our manager at Ellavale, was at one of the morning toolbox meetings, we coated the inside of a pair of safety goggles with bearing blue knowing he was going to demonstrate how to wear goggles. After he removed the goggles there was 2 big blue rings around his eyes. All the blokes at the toolbox meeting started laughing and the boss looked at us mystified. He was not happy but being a good bloke, he did have a laugh with us later.

What do you do in your downtime? These days family is foremost in my private life, I love being around my granddaughters, and taking them to sporting events and travelling to places with them.

The mining industry gets more than its fair share of criticism. What is your view of our industry and the impact it has? There is no doubt the mining industry feeds and puts a roof over the heads of so many, not just coal miners themselves, but a lot more profit from mining engineering, cranes and transport companies, all the way down to the little corner shop selling sandwiches. They do make large holes in the ground, but they also spend a lot of time and effort in rehabilitating the land. They are also very high in community awareness and supporting local sporting groups.



**We listen** **We adapt** **We improve**

Have your say! Take the Local Voices survey [pwcs.com.au/survey](https://pwcs.com.au/survey)

(02) 4907 2280  
(24-hr Community Enquiries Line)

**PORT WARATAH COAL SERVICES**

**Aboriginal Community Development Fund** **MACH Energy Mount Pleasant Operation**

**MACH Energy Australia** oversees commitments relating to the **Aboriginal Community Development Fund (ACDF)**.

The Fund seeks to support partnerships that target issues, needs and opportunities which are priorities for local Aboriginal communities in areas such as health; economic development; cultural and community development and education in the Upper Hunter Valley, NSW.

For applications or further information about the ACDF please visit: [www.machenergy.com.au/acdf](https://www.machenergy.com.au/acdf)

*"Targeting issues, needs & opportunities of local Aboriginal communities"*



# The FAQ of Fibre Optic Conveyor Monitoring

■ BY MATHEW COOK

## About HAWK

Hawk Measurement Systems (HAWK) is the world leader in level, positioning, asset monitoring and flow measurement technology, providing cutting-edge equipment and complete solutions to the global industrial market.

Established in 1988, HAWK has won several prestigious awards for their breakthrough technologies. Some of these technologies include *Fibre Optic Sensing, Acoustic Wave, Ultrasonic, Microwave, and Radar.*

HAWK currently has two manufacturing facilities, headquarters in Melbourne, Australia and the USA manufacturing facility in Medina, Ohio.

[www.HawkFiber.com](http://www.HawkFiber.com)

*HAWK Fiber Casing improves signal and protects sensing fiber*

# HAWK's Praetorian Fiber Optic Sensing System for Conveyor Monitoring is used worldwide in top mine sites to intelligently detect idler failure **BEFORE** it happens.



Instant Deteriorating Fault Alerts | Proactive Damage Prevention | Eliminate Machine Downtime

**Idler Failure is one of the main reasons for unscheduled down time in any bulk handling operation, and frequent idler inspections (which have their own issues) have previously been the only option for monitoring.**

With technological advances, there is now a more efficient and more accurate way to monitor idlers. The bulk handling industry is now utilizing Fibre Optic Sensing (FOS) technology to detect and prevent idler failure. Fibre optic cables are installed along conveyors, allowing for 24/7 idler monitoring, trending and predictive maintenance. The Global Leader and Manufacturer of Fibre Optic Sensing Systems for Conveyor Health Monitoring is Hawk Measurement Systems' (HAWK) Praetorian FOS series. HAWK has been assisting customers in specifying, engineering, designing, installing and commissioning Fibre Optic Systems and has a wide range of experience across all types of conveyors and conveyor applications. Subsequently, with increased interest in this newer technology, HAWK receives many questions from clients regarding Fibre Optic Sensing and how it can work best in their application.

From the increased interest and questions, HAWK has taken the opportunity to address their most Frequently Asked Questions from people who are starting to do their initial research into autonomous conveyor monitoring using Conveyor Health Monitoring System (CHMS).

### How does it work?

The two Key words are Time of Flight and Rayleigh Backscattering.

- Backscattering is the return light from minute imperfections in the fibre, as physical changes such as temperature, strain and vibration act of the fibre

the spectrum of this return light is altered. Rayleigh Backscattering is the part of this spectrum that responds to vibration which allows vibration in the field to be taken out of the return light.

- Time of Flight is like a sonar, laser or radar, in that the time the pulse is traveling relates to a distance, in Fibre optic sensing this is a not just taken at the reflection point but for every bit of the fibre the pulse travels through.

### In terms of output, what does it give me?

- This is customer dependant however the most popular choice is a daily report that can be processed to arrive in your inbox. This report is again customisable, but the typical choices include a "hit list" of idlers in indicating the number, position, time stamps and individual status of idlers of concern as well as list of idlers that have gotten worse since the last report (indicating rapid degradation) or idlers that have cleared (indicating a replacement has occurred).
- The system can also be integrated with DCS or SCADA systems through Modbus TCP/IP and can even be integrated into machine learning with OPC tags outputs.
- HAWK also offers a self-hosted Geographical Information System (GIS) Graphical User Interface (GUI) that allows for easy alarm tracking, managing and history management as well as trending and the elegant display of idler data suitable for all levels of an organisation from operator to manager.

### What's involved with getting it installed?

Again, the process varies, however typically it goes as follows:

- We come to the site to measure up your belt(s)
- We prepare an installation instruction manual that you can share with your preferred contractor (your fibre communication contractors are generally your best starting point)
- We manufacture the parts to fit your belt and send them to you with all of the cable, casing and optical gear required to complete the project.
- We help by supervising the installation process as the contractor gets started.
- After installation We come out and commission the system and provide ongoing support as the system matures and your operation works out the best way to use its output.

### How far can it go?

In conveyors, 10km. Ranges are longer in other applications, however.

### Can it do multiple conveyors?

Yes, as many as you like up to 10km in length, however the distance between conveyors is included in that 10km. So, if you have two 500m conveyors that are 5km apart that would use 6km of the available length.

### Where is it installed?

- On both sides of the conveyor on the stringer, it can be attached to any surface of the stringer so long as there is a free run along that stringer.

- In conveyors that don't have a stringer there are several solutions available and it will be down to the unique set up of the belt which ones are used.

### I have gaps in my stringer, how does that work?

We have metal bridges that span the gap protecting the fibre along its length.

### What happens if the cable breaks?

- We provide our system with the Patented HAWK Fibre Casing (HFC) System which encapsulates the fibre within a metal case that provides better contact with the structure, it also offers excellent mechanical protection against all but the most catastrophic conveyor incidents.

- It can be repaired by any fibre contractor by adding in an extra piece of cable (around 20m) and attaching it to either side of the break. A quick remote recalibration is undertaken by us.

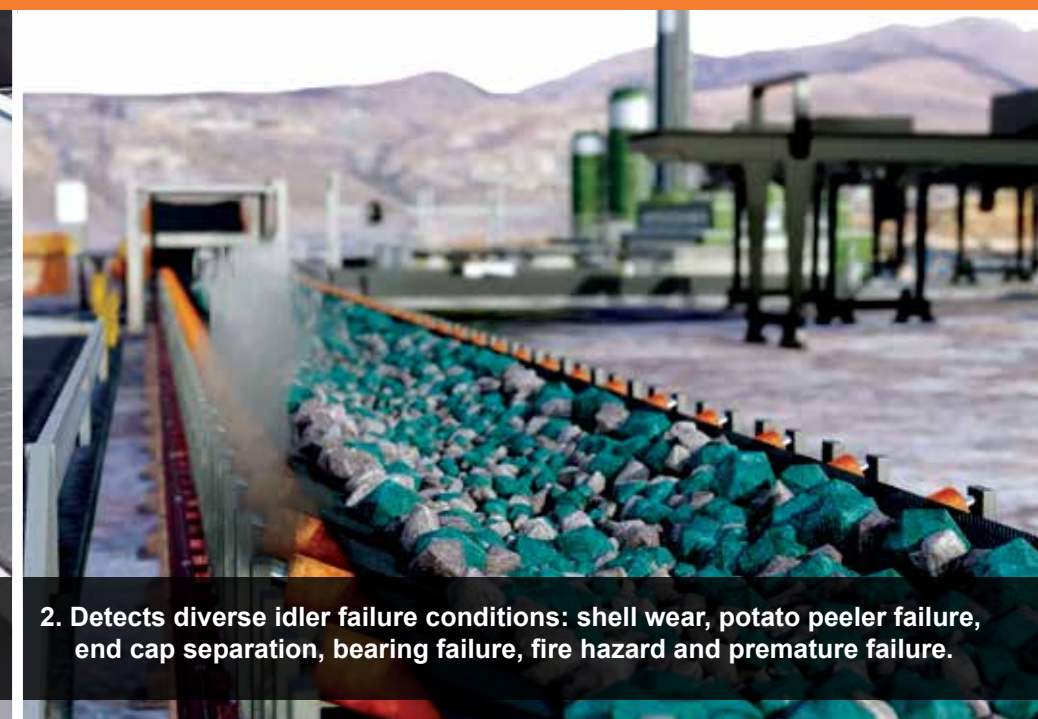
### I'm not sure, can we put the system on trial?

Yes, we encourage it in fact! We have specially made systems that are shipped all over the world specifically for technology trials (including some actively operating systems in the Hunter Valley).

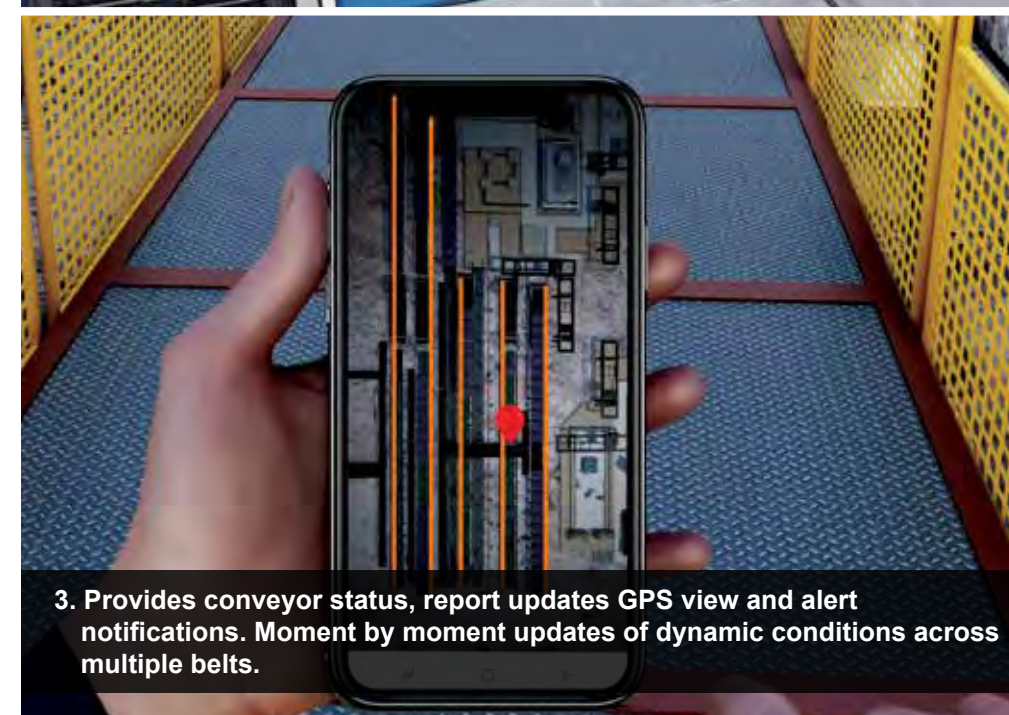
Hopefully this has answered a few of the questions that you may have had about Automatic conveyor monitoring, but we encourage you to reach out to us if you have any further questions or would like to discuss how we can best help you with your conveyor application.



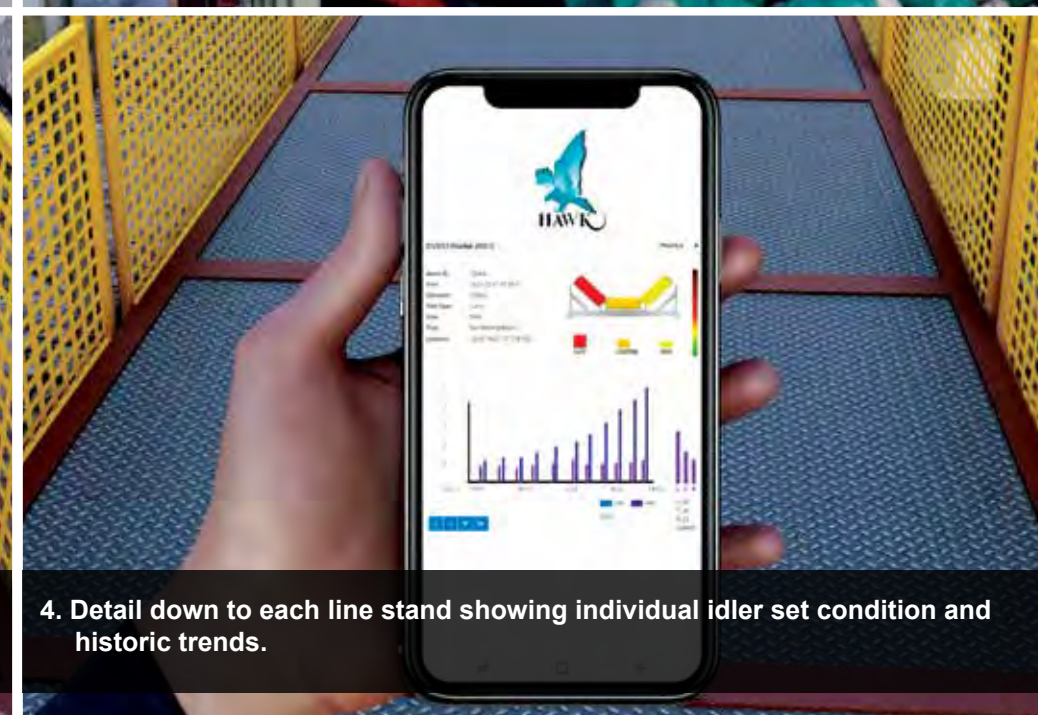
1. Hardware installed in indoor controlled environment nearby, and each piece of the fiber cable works as an independent, multi-variation sensors.



2. Detects diverse idler failure conditions: shell wear, potato peeler failure, end cap separation, bearing failure, fire hazard and premature failure.



3. Provides conveyor status, report updates GPS view and alert notifications. Moment by moment updates of dynamic conditions across multiple belts.



4. Detail down to each line stand showing individual idler set condition and historic trends.

For more information, please email [fiber@hawk.com.au](mailto:fiber@hawk.com.au) or call +61 (0)3 9873 4750

Our ongoing commitment is to develop & provide **industry leading technology** and **cost effective solutions**

Hawk Measurement Systems | [fiber@hawk.com.au](mailto:fiber@hawk.com.au) | [www.hawkfiber.com](http://www.hawkfiber.com) | T: +61 (0)3 9873 4750





## 'AVE A LAUGH WITH HUNTER VALLEY Hydraulink Hose and Fittings

**BEST UNDER PRESSURE**

A man walks into a pet store and asks for a dozen bees. The clerk carefully counts 13 bees out onto the counter.

"That's one too many," says the customer. To which the clerk replies, "It's okay, that's a freebie!"

**02 6571 1625**

hvhydraulink@bigpond.com  
2 Mathry Cl, Singleton NSW 2330

## DON'T DELAY, JOIN TODAY

THE AUSTRALIAN ORGAN  
DONOR REGISTER WANTS  
TO PUT A FEW MYTHS  
ABOUT DONATING TO BED.

**DON'T DELAY, JOIN TODAY**  
[WWW.DONATELIFE.GOV.AU](http://WWW.DONATELIFE.GOV.AU)

Many people are still under the impression that you can register with your driver's license renewal, which may lead to delays in acting. Your donor registration is no longer listed on your driver's license and South Australia is now the only state which allows people to register this way.

You now need to join the Australian Organ Donor Register. It takes less than a minute to check if you are already registered.

Donated organs or tissue can save and significantly improve the lives of many people who are sick or dying.

Around 1750 people are currently on the waiting list for an organ transplant and every person on the list has been assessed and met eligibility requirements.

People are usually on the waiting list for between six months and four years, but some wait even longer. There are also a further 13,000 on dialysis due to kidney failure who may need a kidney in the future.

**ONE PERSON DONATING THEIR ORGANS MEANS UP TO 7 PEOPLE CAN COME OFF THE WAITLIST.**

Australia is internationally recognised for its successful organ transplants and the majority of people go on to lead full and active lives.

And it's not just hearts, eyes or kidneys which can be donated.

One of the donations with multiple uses is bone tissue. Bone tissue also includes tendons, such as the Achilles tendon,

ligaments and meniscus.

Donated bone tissue can be grafted to help people who have lost bone through cancer or other disease or accidents.

Bone tissue can heal people suffering from fractures. It can strengthen hip and knee joint replacements, repair curvatures of the spine (scoliosis) in children and teenagers, and repair teeth.

You can also donate bone while you are alive. If you are having a total hip replacement you can agree to donate your femoral head, which can be used for bone grafts.

**HUNTER NEW ENGLAND HEALTH IS ORGANISING A SERVICE OF REMEMBRANCE FOR DONOR FAMILIES, RECIPIENTS AND HEALTH PROFESSIONS. THE HNE LHD ORGAN & TISSUE DONATION SERVICE SERVICE OF REMEMBRANCE IS A SPECIAL TIME FOR DONOR FAMILIES, TRANSPLANT RECIPIENTS AND HEALTH PROFESSIONALS TO COME TOGETHER TO, HONOUR THOSE WHO HAVE GENEROUSLY GIVEN LIFE THROUGH ORGAN AND TISSUE DONATION, AND PAY SPECIAL TRIBUTE TO THOSE PEOPLE AND THEIR FAMILIES. THE ORGAN AND TISSUE DONATION SERVICE OF REMEMBRANCE WILL BE HELD AT FORT SCRATCHLEY IN NEWCASTLE ON OCTOBER 1.**

## SAFETY ON SHOW

EMERGENCY SERVICES JOINED FORCES FOR A SPECIAL EXPO IN SINGLETON ON SATURDAY AUGUST 20 WITH A VARIETY OF ACTIVITIES ON SHOW INCLUDING LIVE DEMONSTRATIONS AND SIMULATIONS, AGENCY DISPLAYS AND EMERGENCY VEHICLES.

A broad range of agencies partnered with Singleton Council for the free event which provided a unique opportunity for people of all ages to learn how to prepare for emergencies and to see first-hand how emergency services personnel respond when the worst happens. For those of you who couldn't make it we asked some of the experts for their top advice.

### NSW STATE EMERGENCY SERVICE (SES)

Have a home emergency plan. It takes 5 minutes to complete one on our website and not only can it save the life of you and your family and even your pets, it can also minimise damage to your property and possessions. When a warning is enacted don't wait, enact your plan straight away. Every household should also have an emergency kit made and ready to go.

[www.ses.nsw.gov.au](http://www.ses.nsw.gov.au)

### NSW POLICE

Have a plan for emergencies and stick with the plan. We see too many people second guessing or changing their plans at the last minute. Don't listen to rumours or social media as it is full of misinformation. Instead get the latest updates and advice you need directly from agencies such as SES and RFS depending on the emergency. And always follow the advice of the professionals.

[www.police.nsw.gov.au](http://www.police.nsw.gov.au)

### NSW FIRE AND RESCUE

A fire can take hold in three minutes, yet it only takes seconds to prevent one. Check your fire alarms are working regularly. Have a fire blanket and fire

### NSW AMBULANCE

Always have your contact details easily accessible in case of an emergency. On the fridge at home and in your bag or wallet. It's also important to list the medications you are on and any health problems you have as this can make all the difference. Know your location so we can find you quickly and make sure children in the family know your home address so they can provide it to the operator if needed. And always save calling 000 for real emergencies.

[www.ambulance.nsw.gov.au](http://www.ambulance.nsw.gov.au)

### LOCAL LAND SERVICES

During a natural disaster or emergency event you are responsible for your animals whether they are domestic or commercial. Have an animal plan so you know what you are going to do with your animals, and more importantly, when you are going to do it. Learn where it's safe to relocate and make sure your animals are tagged. Family and friends can be one of the best places to take your animals if they live outside the danger area.

[www.lls.nsw.gov.au](http://www.lls.nsw.gov.au)

### NSW RURAL FIRE SERVICE (RFS)

Due to the recent rain there's been more grass growth and so there is an increased risk of grass fires this summer. Grass fires can move three times faster than a bush fire, leaving you little time to get ready, so every household should have a Bush Fire Survival Plan. The whole family should be involved in creating the plan and keeping it updated. Head to our website to create your plan today if you don't already have one.

[www.rfs.nsw.gov.au](http://www.rfs.nsw.gov.au)

### NATIONAL PARKS AND WILDLIFE SERVICE NSW

Be prepared. One of the best ways to do this by getting the latest up to date information from websites, apps or social media before you go. Heavy rainfall and flooding across NSW has created dangerous conditions in some areas and the closure of many national parks and campgrounds, so always obey signage as it's there for your safety. And above all – don't be complacent.

[www.nationalparks.nsw.gov.au](http://www.nationalparks.nsw.gov.au)

extinguisher easily accessible in the home. Don't overload power points. The leading cause of home fires in NSW is leaving cooking unattended so always stay in the kitchen while cooking and turn

off the stove before you leave. Every house needs to have an escape plan, without it you are placing the lives of everybody in your home in jeopardy.

[www.fire.nsw.gov.au](http://www.fire.nsw.gov.au)



## HUNTER VALLEY MINING CHARITY RUGBY LEAGUE KNOCKOUT COMPETITION

**17 SEPTEMBER 2022**  
PIRTEK PARK, SINGLETON

**THE TRADITIONAL BATTLE OF THE MINES CONTINUES WITH LOCAL COAL MINERS  
COMPETING FOR BRAGGING RIGHTS AND SUPPORTING THE LIFESAVING  
WORK OF THE WESTPAC RESCUE HELICOPTER SERVICE**

**\$10 PER PERSON – UNDER 16 FREE**  
PURCHASE TICKETS ONLINE: [www.charityrugbyleagueday.com.au](http://www.charityrugbyleagueday.com.au)

**BBQ • BAR • COFFEE VAN • RAFFLE • MERCHANDISE • FREE PARKING**  
GATES OPEN 7.30AM. FIRST GAME KICKS OFF AT 9.00AM



SCAN HERE TO  
PURCHASE TICKETS



1800 155 155 | [www.charityrugbyleagueday.com.au](http://www.charityrugbyleagueday.com.au)



Growth brings opportunity.

**Alfabs is actively recruiting:**

- Site Boilermakers
- Workshop Boilermakers
- Welders
- Riggers
- Industrial Painter/Blasters
- Mechanical Fitters
- Hydraulic Fitters
- Diesel Fitters

**AE ALFABS**

people make alfabs  
[people@alfabs.com.au](mailto:people@alfabs.com.au)



# GET IT RIGHT ON SITE



**M&P SERVICES MOBILE CRIB ROOMS ARE MARKET LEADING PRODUCTS THAT IMPROVE EMPLOYEE SAFETY AND INCREASE PRODUCTIVITY.**

Since 1986 M&P Services mobile crib rooms and other mobile site solutions have been used extensively across WA, NT, QLD, PNG and now they are providing the NSW market cost neutral mobile solutions. The purpose built off road units are widely accepted by employees, making it easier to co-ordinate meal breaks and shift changeovers and help to reduce large machinery traffic and light vehicle interactions. 100% self-sufficient with 3, 5 and 7 day run times.

[WWW.MPSERVICES.NET.AU](http://WWW.MPSERVICES.NET.AU)

# DIAMONDS ARE A MINES BEST FRIEND



**Before After**

DiamondGrid is an Australian made, 100% recycled polypropylene ground stabilisation system used in the mining sector worldwide. This outstanding product has the compressive strength of over 1,000 tonnes / m2. DiamondGrid often takes the place of traditional concrete or asphalt and is largely used to eliminate ongoing maintenance whilst providing a safe and fatigue free pavement.

**THE STRONGEST SURFACE STABILIZATION AND EROSION CONTROL SYSTEM ON THE MARKET.**

[WWW.DIAMONDGRIDAUSTRALIA.COM](http://WWW.DIAMONDGRIDAUSTRALIA.COM)



# MIRROR, MIRROR ON THE DOOR

**ELITE INDUSTRIAL EQUIPMENT ELECTRIC MIRRORS REMOVE THE HAZARDS AND DOWNTIME ASSOCIATED WITH ADJUSTING MIRRORS.**

The current method of adjusting large haul truck mirrors involves calling a fitter to come out with spanners and manually adjust the mirrors while the operator yells out which way they need to be adjusted. Elite Powered Mirrors allow operators to adjust their own mirrors just like you do in your car. An Australian made and patented product.

[WWW.ELITEIE.COM.AU](http://WWW.ELITEIE.COM.AU)

# MACHINE SMART

**KOMATSU AUSTRALIA HAVE LAUNCHED THE NEW KOMATSU IMC 2.0 EXCAVATOR RANGE.**

iMC 2.0 is the next generation of the intelligent Machine Control which promises to improve productivity and efficiency. The Komatsu fully factory integrated technology enables operators to get the job done right first time, every time. With Auto-Stop Control, Auto Grade Assist, Minimum Distance Control, Auto Tolt Control and Bucket Angle Hold, it's got every job covered.

[WWW.KOMATSU.COM.AU](http://WWW.KOMATSU.COM.AU)



# ELIMINATING EROSION



**EARTHLOK CONCRETE MATS ARE A REVOLUTIONARY, AUSTRALIAN-MADE SOLUTION TO EROSION.**

EARTHLOK® is a revolutionary groundcover solution for a versatile range of applications including tailings infrastructure, cut-face embankments, hard stand/ processing areas, haulage areas and mine site closure areas for rehabilitation. Cost-effective and environmentally friendly, EARTHLOK concrete mats can be custom-made to design specifications.

[WWW.EARTHLOK.COM.AU](http://WWW.EARTHLOK.COM.AU)

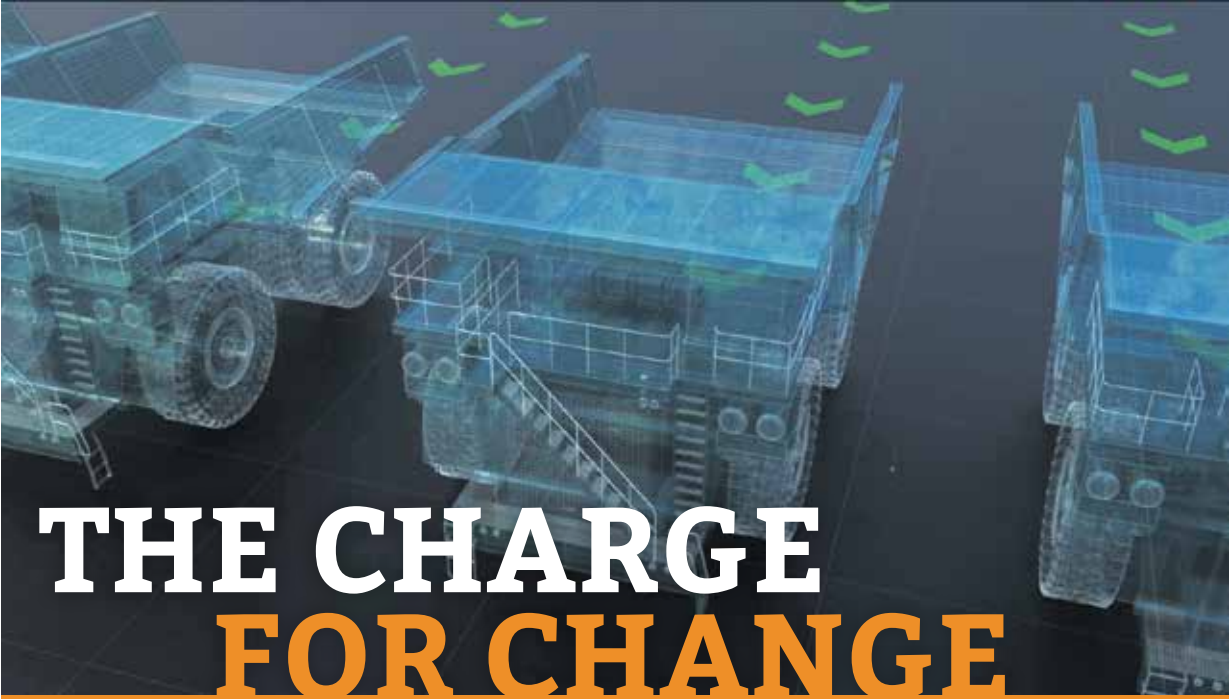


# MAP TIME

**SANDVIK HAS LAUNCHED AUTOMINE® MAPPING SOLUTION, THE NEXT GENERATION AUTOMATION SOLUTION.**

Sandvik Mining and Rock Solutions has introduced AutoMine® Mapping Solution, an innovative new product designed to maximise productivity and improve safety of autonomous vehicle navigation in underground mining operations by utilising mapped data. It enables a vehicle to safely record an underground 3D environment and convert 3D maps to 2D. It can be used on all types of underground equipment (loaders, trucks and drills), eliminating the need for dedicated equipment and resources to map the area.

[WWW.ROCKTECHNOLOGY.SANDVIK](http://WWW.ROCKTECHNOLOGY.SANDVIK)



# THE CHARGE FOR CHANGE

**OUR FOURTH AND FINAL CHAPTER ON THE CHARGE ON INNOVATION CHALLENGE EXPLORES SOLUTIONS PRESENTED BY THE TWO REMAINING FINALISTS, 3ME TECHNOLOGY AND SHELL CONSORTIUM.**

With over fifteen years' experience in battery systems and e-mobility, it was no surprise that 3ME Technology's solution progressed to the final stage of the challenge. The company prides itself on developing and manufacturing remotely monitored, reliable, safe and scalable battery systems that power heavy-duty mining equipment; these factors were unwavering in light of the challenge.

3ME Technology delivered a battery system purposely refined for the challenge. The company's submission revolves around their novel Bladevolt® XL system, which is haul-truck specific, modular, interoperable and scalable to fit the requirements of machine operations. The system is enabled to collect and examine critical data that will aid the improvement of processes moving forward. Moreover, the solution is cost-effective and accommodating to the recommended charging infrastructure.

A Shell-led consortium joins the ingenious pool of finalists with their large-scale haul truck electrification system. Since 2008, Shell Energy has been striving to deliver business energy solutions and innovation across a portfolio of electricity, gas, environmental and energy productivity. As for their submission, Shell put forward a cost-neutral, end-to-end interoperable electrification system for mobile mining equipment that works to minimise operational impact and decarbonise the industry. The consortium explained their submission, "combines an innovative, high-powered battery solution, with ultra-fast charging and a standardised micro-grid energy system."

**THE CHALLENGE, WHICH SOUGHT SOLUTIONS THAT SAFELY AND PRODUCTIVELY DELIVERED ELECTRICITY TO 220-TONNE TRUCKS TO REDUCE DIESEL FUEL CONSUMPTION, HAS GAINED GLOBAL ATTENTION AND PRAISE.**


Founded by BHP, Rio Tinto and Vale and facilitated by GHD/Austmine, the contest was created for more reasons than those that initially come to mind. They aimed to: demonstrate an emerging market for charging solutions in mining; accelerate the commercialisation of solutions; indicate to suppliers that the mining industry seeks interoperable solutions; maintain multiple actors and competition in the supply chain; and integrate innovations from other sectors into the mining sector.

Vale's CEO, Eduardo Bartolomeo, said, "It is with great pride that we announce the winners of this Challenge who have presented solutions that promise to disrupt the sector. The decarbonisation challenge is so extensive that the mining industry cannot tackle it alone, but with partnerships such as these, we hope to reach this goal."

GHD is currently managing the process of determining consortia to drive the examination of preferred technologies. GHD's CEO, Ashley Wright, said, "Our role with Charge On Innovation Challenge is aligned with our Future Energy ambitions of helping clients and communities move to a future of reliable, affordable and secure low-carbon energy sooner. Decarbonising heavy-emitting sectors, including both mining and transport, will be crucial to realising this vision."

While it is still early days, it is evident the industry is reaching new levels via the success of the challenge thus far.

# COMPONENTS ONLY THE GAME



**COMPONENTSONLY IS THE GLOBAL LEADER IN THE TRADE OF HEAVY EARTHMOVING COMPONENTS. THEY SOURCE, SELL AND MARKET NEW, USED, REBUILT AND NON-GENUINE COMPONENTS FOR THE MINING INDUSTRY.**

And now you too can become a leader in the trade of heavy earthmoving components. Source, sell, and market your way around the fun and challenging ComponentsONLY board game and grow your own global mining empire!

Whether it's moving mountains for your business or moving your vehicle across the game board, ComponentsONLY will keep you tracking.

**FOR YOUR CHANCE TO WIN YOUR VERY OWN COMPONENTSONLY EQUIPMENT AND MINING TRADING BOARD GAME, SIMPLY SMS: COMPONENTS ONLY, YOUR NAME, AND YOUR EMAIL ADDRESS TO 0438 474 290.**

**COMPONENTS ONLY**

[WWW.COMPONENTSONLY.COM.AU](http://WWW.COMPONENTSONLY.COM.AU)  
1300 726 801

Limit of one entry per person. By submitting an entry, you consent to the use of your contact details for promotional and marketing purposes.

# COMPONENTS ONLY

**THANKS TO COMPONENTS ONLY, OUR HEAVY EQUIPMENT EXPERTS**



# Have you been injured in a workplace accident?

We understand your rights and can help you access the compensation you deserve

**Lodging a claim doesn't have to be complicated if you have our expert compensation lawyers on your side. Our results speak for themselves. Call us today.**

- ✓ High success rate in helping our clients achieve the best outcome.
- ✓ Our IRO approved solicitors can arrange legal assistance funding for eligible applicants.

Phone (02) 4050 0330 today | [admin@conradcurrylaw.com.au](mailto:admin@conradcurrylaw.com.au) | [conradcurrylaw.com.au](http://conradcurrylaw.com.au)

 **THE LAW OFFICE OF CONRAD CURRY**  
Trusted and Effective





PHOTO CREDIT:  
NEWCASTLE  
KNIGHTS

## MUSWELLBROOK'S MORAN BACK STRONGER

MUSWELLBROOK-BORN CAITLIN MORAN HIT ROCK BOTTOM IN 2018, BUT NOW SHE'S MADE HER WAY BACK BOTH PHYSICALLY AND MENTALLY TO HIT THE NRLW FIELD ONCE AGAIN, THIS TIME FOR THE NEWCASTLE KNIGHTS.

Caitlin comes from a rugby league family so her career started from a very young age playing with the Muswellbrook Rams as a junior. In 2017 she played for Norths Newcastle winning the Harvey Norman Women's Player of the Year. In that same year, Caitlin was playing for Australia in the World Cup.

She half-scored four tries in the tournament and kicked the game-sealing field goal for the Jillaroos in the final. Caitlin has also played for the State and Indigenous All-Stars.

In 2018 Caitlin was recruited to the NRLW and for her inaugural season was signed to the Brisbane Broncos. But her journey with the NRLW wasn't meant to be suffering an ACL injury four weeks in with the squad.

The now 25-year-old old said her physical and mental recovery has been long, but she's finally out the other side.

"It has been a long recovery for me, especially when NRLW was kicking off I had the opportunity to sign on with the Broncos and I moved my whole life up there all in two weeks and then four weeks into it I did my ACL so I went through a lot of hard times and then fell away from the game for the next two, three years," she said.

"Then I was lucky enough to do all of my rehabilitation and get back the last two seasons playing with the West Brisbane Panthers up there and then got scouted to come home."

It's no secret that Caitlin is hungry for the game again and as keen as ever to have a successful season with the Knights playing halfback.

**SHE SAID IT WAS REALLY A NO-BRAINER WHEN THE KNIGHTS CAME KNOCKING TO RECRUIT HER FOR THE SEASON.**

"It's a different feeling you know, I haven't been home in a long time and coming home, it's where I grew up, this is my community and you walk down the street and everyone knows everyone. I've got family left right and centre down here and all of the school friends are still here

supporting," she said.

"Growing up in Newcastle you kind of have no choice, the Knights are your team, it is embedded into you early.

"It's a bit foreign if you go for someone outside of here so I think just the passion that Newcastle brings and that pride that I feel getting the opportunity to come back for my first NRLW season and for it to be on home turf and for my town," said Caitlin.

"Just even growing up here playing in the normal comps with the boys and everything it was no different and that's from the under-6s through to whatever division or grade that you make it to you have support 100% from everyone in this town and everyone in this community."

Caitlin was only named on the interchange bench for the Knights season opener against the Brisbane Broncos on August 21, but she was there in the dressing room celebrating with the side when they thumped the Broncos 32-14 at McDonald Jones Stadium.

The win is the very first in the Knights NRLW history, and hopefully just the start.

Caitlin said the game has certainly changed since she first played, but she's settling in.

"The game has definitely changed, professional wise since I last played on this kind of platform. The experience I have yes, but it's all still a bit new to me. I've slotted in well and everything but a few things I was a bit shaken up about, but I think that's the cobwebs coming off and trying to get into a routine."

"With the squad and the girls that we have around us, they've been able to push each of us through and I'm comfortable enough," she said.

"The team that we're building and the skill level and the experience and the team morale that we're building, I'm just excited."

**CAITLIN SAID TEAMS LIKE THE BRONCOS THINK THEY'LL BE GOING HARD, BUT THE KNIGHTS WILL ALWAYS GO HARDER.**

## SPRING FISHING FEVER IS BACK

### OFFSHORE

The Yellowfin Tuna have finally given us a sniff. For those lucky enough to be gifted a weather window recently we've seen plenty of fun sized fish around the 40kg being caught wide of Allmark and Norah canyons.

On the inshore reefs, Snapper have been in great numbers and size. It pays to fish first or last light with soft plastics around the shallows or anchoring on a reef edge and fishing floating baits down a burley trail as we tend to see the water clear up after the westerlies.

On the deeper reefs with the limited current this time of year, it's definitely a great time to have a drop for a few Pearl Perch, Snapper, Trag and closer to the shelf, Bar Cod and Kings.

### CREEKS, DAMS AND RIVERS

With the rivers and creeks still carrying plenty of water from all the recent rain it will take a bit of time before fishing is back on. When

things do improve these areas are going to be on fire especially with the new structure and deeper holes to suss out after the floods. Fingers and toes crossed the heavy rain in the long range forecast leaves us alone and things begin to settle down.

Fishing the dams has been pretty good considering the water movement of late. It really pays to target the schooled fish using soft plastics, suspended hard bodies and spinnerbaits.

### LAKES AND ESTUARIES

Spring is one of the best times to be around the lakes and estuaries, we have both the weather and water beginning to warm up making it the start of the annual Prawn and Crab seasons.

On the fishing front throughout September, we will have all species of fish on the chew. Flathead and Whiting will start to move into the shallows, Bream will be hungry holding tight to structure, Blackfish will still be holding around the local break walls and Jew will be on the hunt after all the recent water movements and especially as it begins to warm into Spring.

**Keep floatin' - Thrifty's**



WHEN IT COMES TO FISHING THE HORIZON IS THE LIMIT AND IT'S ANYONE'S GAME. RENEE FROM MTW TRAVELLED TO PORTLAND WITH NOTHING BUT BLUEFIN TUNA IN MIND AND A MONSTER BLUEFIN WAS CLAIMED... WHAT A TRIP AND WHAT AN EFFORT!



## LET'S GO FISHING!

IT'S TIME TO PATCH UP THE DINGHY, GET OUT YOUR RODS AND HEAD TO THE WATER AND SEE WHAT'S LURKING BELOW THE SURFACE.

And to make your chances of catching a big one all the better we've got a \$50 BCF gift vouchers up for grabs.

**FOR YOUR CHANCE TO WIN, SIMPLY SMS: LET'S GO FISHING, YOUR NAME, AND YOUR EMAIL ADDRESS TO 0438 474 290.**

LIMIT OF ONE ENTRY PER PERSON. BY SUBMITTING AN ENTRY, YOU CONSENT TO THE USE OF YOUR CONTACT DETAILS FOR PROMOTIONAL AND MARKETING PURPOSES.

## PIRTEK WE'LL KEEP YOU OPERATING



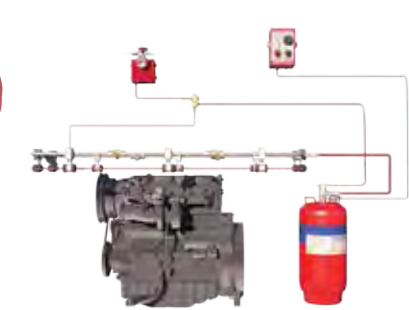
### HOSES & FITTINGS



### QUICK FILL



### LUBRICATION



### FIRE SUPPRESSION



### SAFETY



### SPILL CONTROL

**Bathurst**  
1/112 Durham St. Bathurst  
(02) 6355 7004

**Dubbo**  
42 Bourke St. Dubbo  
(02) 8687 9600

**Gunnedah**  
40-44 Allgayer Dr. Gunnedah  
(02)6742 4988

**Maitland**  
129 Racecourse Rd. Rutherford  
(02) 4932 1120

**Mudgee**  
36 Sydney Rd. Mudgee  
(02) 6372 3454

**Muswellbrook**  
88 Maitland St. Muswellbrook  
(02) 6543 4255

**Newcastle**  
20 Munibung Rd. Cardiff  
(02) 4954 5933

**Orange**  
97 Elsham Ave. Orange  
(02) 6360 2944

**Singleton**  
14 Maskey Rd. Mt Thorley  
(02) 6574 2782

**Tamworth**  
4/61 Barnes St. Tamworth  
(02) 6762 0600



**134-222**

24 HOURS - 7 DAYS  
www.pirtek.com.au

## MOBILE SOLUTIONS

**M&P SERVICES**  
(Qld) Pty Ltd  
Since 1986  
Quality Transportable Building Solutions

### SERIOUS EQUIPMENT SAVES YOU SERIOUS MONEY



Mobile Crib Video



ENQUIRE NOW

- Cost Neutral Investment
- Increase Safety
- Employee Comfort
- Fully Self-Contained



[www.mpservices.net.au](http://www.mpservices.net.au)



# SPRING INTO THE GOOD STUFF!

SPRING IS IN THE AIR, THE COLD CHILL OF WINTER IS BEHIND US, AND PEOPLE ARE ONCE AGAIN RETURNING TO THE BEACHES AND CAMPGROUNDS. SO, SLAP ON YOUR SUNSCREEN AND WATCH OUT FOR THE MAGPIES!



## PROHIBITION RETURNED? WE GOT YOU COVERED.

Winter is over and Spring is here, the sun is out and you're thirsty. You or someone you know will love this secret gift. Simply fill the 230ml flask with a tasty beverage and have a drink on us. It even comes with a funnel. Surprise everyone with how sun safe you are by always carrying a tube of sunscreen with you wherever you go. Don't leave home without your Fake Sunscreen Secret Flask. Have a sip on the sly with Yellow Octopus.

[WWW.YELLOWOCTOPUS.COM.AU](http://WWW.YELLOWOCTOPUS.COM.AU)

## KEEP THE DROP BEARS AWAY

IF CAMPING IS YOUR PLAN THIS SPRING, WHY NOT KEEP CLEAN AND PROTECT YOURSELF FROM AUSTRALIA'S DREADED BUSH NIGHTMARE.

Australia is host to many deadly and venomous animals, none more fearsome than the terrifying Drop Bear, the bane of campers all over Australia. Not to be confused with their cute and cuddly cousin the Koala, Drop Bears hide in trees waiting for unsuspecting victims to wander below



and that is when they pounce down and devour their victims. But you can now smell good and protect yourself with this organic Australian made Drop Bear Repellent Soap. To stay safe this spring visit Yellow Octopus.

[WWW.YELLOWOCTOPUS.COM.AU](http://WWW.YELLOWOCTOPUS.COM.AU)



## DON'T DRY UP THIS SPRING

WATER IS AN IMPORTANT PART OF LIFE, BUT WHAT HAPPENS IF YOU'RE CAMPING OR LOST IN THE BUSH, AND YOU RUN OUT?

100% organic, BPA free, low-sodium, lightweight, dehydrated water. This gift is a must for anyone planning on going camping this Spring. Imagine, you're going on a bushwalk and find yourself lost, you brought a bottle of water with you but that's now empty and it hasn't rained in a week. Never fear, to quench your thirst with dehydrated water, all you need to add is water. How to stay hydrated this Spring? Ask the Witty Yeti.

[WWW.WITTYYETI.COM](http://WWW.WITTYYETI.COM)

## POOL SIDE PUTTING

WANTED TO GO GOLFING THIS WEEKEND, BUT THE KIDS WANTED TO GO TO THE POOL? NOW YOU CAN DO BOTH!

Spring is here and there is nothing like going for a dip in a cool pool, but you also want to go golfing and there are not enough hours in the day. Try this gift that comes with a 24"x35" floating golf green, a Pro-turf 8"x20" chipping mat, 5 floating golf balls, 1 rubber tee, and 1 flag. Stay cool and practise your putting with the Floating Golf Green for the Pool.

Practise your teeing in the pool with Amazon.



[WWW.AMAZON.COM.AU](http://WWW.AMAZON.COM.AU)

## PLAY ON THE SAND

FOR ANY PARENT WHO JUST WANTS TO RELAX AT THE BEACH, KEEP YOUR KIDS ENTERTAINED WITH THIS FUN GAME TOWEL.

Ultra-absorbent, soft and cuddly, this 90cm x 160cm x 1cm towel is a must for any family at the beach, printed with fun games, this 200 GSM, 100% microfibre towel is highly absorbent and soft to the touch, and comes with wooden playing pieces. When the water and sand is not enough to entertain your kids this Spring, bring the Sunnylife Kids Summer Games Towel.

To get this fun kid's towel, visit Gifts Australia.

[WWW.GIFTSAUSTRALIA.COM.AU](http://WWW.GIFTSAUSTRALIA.COM.AU)

## PREPARATION IS SURVIVAL



PLANNING A TRIP INTO THE BUSH FOR CAMPING OR HIKING, BUT NOT PLANNING ON GETTING LOST? WE CAN HELP.

If camping is your ideal holiday this spring, or you feel like a bushwalk but have a bad habit of getting lost, carry this tin with you and be prepared for any situation. The kit includes a fire starter 'flint and steel' tool, 6-in-1 pocketknife with screwdriver, bottle opener, scissors, multi blades, tweezers, 210cm rope, carabiner, 10 safety pins, strong wire saw and instructions for use, all in a retro storage tin. So next time you're planning a trip outdoors remember the Gentlemen's Hardware Outdoor Survival Kit.

How to get this amazing kit? Go to Gifts Australia.

[WWW.GIFTSAUSTRALIA.COM.AU](http://WWW.GIFTSAUSTRALIA.COM.AU)

# Advancing energy Advancing everyday life

Glencore is responsibly supplying the high-quality coal needed for energy today, while also investing in the green metals vital for a low carbon future.

Find out more: [glencore.com.au](http://glencore.com.au)



GLENCCORE



## DOUBLE DOWN AT DASHVILLE

**WIN!**  
**DASHVILLE  
SKYLINE**



**DASHVILLE SKYLINE IS A CAMPING MUSIC FESTIVAL FEATURING TONS OF LIVE PERFORMANCES AND SHOWCASING THE BEST OF COUNTRY MUSIC.**

The festival runs over three days and four nights, Thursday 29th, Friday 30th September, Saturday 1st and Sunday 2nd October

**FOR YOUR CHANCE TO WIN A DOUBLE PASS WHICH INCLUDES CAMPING, SIMPLY SMS: DASHVILLE, YOUR NAME, AND YOUR EMAIL ADDRESS TO 0438 474 290.**

[WWW.DASHVILLESKYLINE.COM.AU](http://WWW.DASHVILLESKYLINE.COM.AU)

Limit of one entry per person. By submitting an entry, you consent to the use of your contact details for promotional and marketing purposes.



ONE OF THE HUNTER'S TOP MUSICAL FESTIVAL SITES IS THROWING OFF TWO YEARS OF COVID CANCELLATIONS AND EVENT RESCHEDULING WITH NOT ONE, BUT TWO MUSIC FESTIVALS COMING SOON.

Dashville is a secluded bushland venue and campground off Kirkton Road at Belford.

Dashville is very much centred on live music, and it was The Gum Ball that started it all back in 2004 with a humble music and arts festival with around 3000 campers over three days.

Eighteen years later, 2022 is building to be a crowded year as restrictions lift and families and music fans are starting to flock back to entertainment and events.

**THE "SLIGHTLY HEAVIER" MUSIC FESTIVAL THRASHVILLE WILL BE HELD AT DASHVILLE ON SEPTEMBER 16 AND 17.**

Held in lush bushland confines, the popular alternative festival, which only just had its postponed 2021 chapter held in February this year, is back with a fresh plate of emerging and established acts, ready to spark pure delight into anyone with a penchant for punk, hard rock, heavy metal and everything in between.

The two-day festival will feature live music across two stages, accompanied by other cool stuff like tattooing, live graffiti and pro-skateboarding displays.

**WIN!**  
**THRASHVILLE**  
HELD IN LUSH BUSHLAND CONFINES, THE POPULAR ALTERNATIVE FESTIVAL IS BACK WITH A FRESH PLATE OF AWESOME.

For the first time ever, the shifty extreme punk of Wollongong's Totally Unicorn, Sydney-based punk rockers Fangz, revered Newcastle punk rockers Hack the Mainframe, Sydney metalcore maniacs Arteries will perform, along with a healthy cast of local emerging acts Crucial Times, Boycott, Tired Minds, Telurian, Latest God and the Wandering. Dashville also welcomes back the devout all-consuming punk, stoner, metal experience that is the Neptune Power Federation, Newcastle's loveable lord of the rings, the Australian Beef Week Show, the funky sludge/doom that is Mountain Wizard Death Cult and Newcastle all-girl punk band Bitchcraft.

**IF SOMETHING A LITTLE MORE LAID-BACK AND FAMILY FRIENDLY IS YOUR THING, IT'S ALL SYSTEMS GO FOR AUSTRALIA'S COSMIC COUNTRY WEEKENDER, DASHVILLE SKYLINE, ON THE OCTOBER LONG WEEKEND.**

The three-day event from September 30 will be headlined by the Black Sorrows with Canada's Frazey Ford

and William Crighton.

Talking about the Black Sorrow's first trip to Dashville, Joe Camilleri said "as we turned off the main highway from Newcastle in pitch darkness down a country road...Dashville really took us by surprise."

"There was this fantastic set-up built amongst the trees with people just cruising.

"There was a spirit that you don't come across too often at festivals... everything seemed to melt into one...the location...the people...the atmosphere...the more the audience gave us the more we wanted to give back...it was all about the music...for young and old."

The line-up will also include Vikki Thorn from the Waifs' new project ThornBird and the incomparable Henry Wagons bringing his new record and band for a spin.

Making an exciting Dashville debut is Gabriella Cohen and festival-goers can welcome back Australia's favourite Spanish troubadour Steve Smyth.

FOR TICKETS AND ALL THE FESTIVAL INFORMATION, GO TO [DASHVILLE.COM.AU](http://DASHVILLE.COM.AU).

**WIN!**  
**THRASHVILLE**  
HELD IN LUSH BUSHLAND CONFINES, THE POPULAR ALTERNATIVE FESTIVAL IS BACK WITH A FRESH PLATE OF AWESOME.

Featuring emerging and established acts, ready to spark pure delight into anyone with a penchant for punk, hard rock, heavy metal and everything in between. The festival is on this September 16 and 17.

**FOR YOUR CHANCE TO WIN A DOUBLE PASS WHICH INCLUDES CAMPING, SIMPLY SMS: THRASHVILLE, YOUR NAME, AND YOUR EMAIL ADDRESS TO 0438 474 290.**



[WWW.DASHVILLE.COM.AU/THRASHVILLE](http://WWW.DASHVILLE.COM.AU/THRASHVILLE)

Limit of one entry per person. By submitting an entry, you consent to the use of your contact details for promotional and marketing purposes.



## SOPHISTICATED, COSY DINING IN THE HEART OF MAITLAND

GROWING UP IN MAITLAND WHENEVER WE WANTED TO GO OUT SOMEWHERE SPECIAL YOU'D GO TO SHENANIGANS OR THE OLD GEORGE AND DRAGON.

Maitland's food scene went through a bit of a slump after that, but over the last couple of years it's transitioned into quite the foodie town with places like Coquun, Fratelli Roma, the Whistler and The Rigby.

The Rigby was established in 2016 by father and son Nick and Howard Bourne. It's a Victorian-era building named after the builder who created it, JR Rigby.

Howard, or HB as everyone calls him, ran major wineries and outdoor events in Pokolbin for more than 20 years before making the jump to the Maitland hospitality scene. Nick and his sister Tessa were still in school but started working with HB and it didn't take long before The Rigby was born and Nick started working with his dad full time.

You'd almost miss it if you didn't know it was there, hidden away among the historic buildings on High Street and it's not what you'd expect when you walk in. When you open the door the bar is at the front with dining out the back.

The bar is beautiful, with a wall filled with every spirit you can imagine. You can sit at the bar and watch your barman, who if you're lucky will be Nick, shake you a cocktail or pour you a wine or go get cosy in one of the lounges.

There's a great selection of Hunter Valley wine from Tyrrell's to Krinklewood. If wine isn't for

you, there are plenty of cocktails including an Espresso Martini, the Rhinestone Cowboy with rye whiskey, sherry and coffee or the Bee Pollen Negroni with gin, bee pollen, bitter orange, saffron and vermouth. There's a whole gin and tonic menu as well.

I had an Espresso Martini, not something I would normally order because it's hard to find a good one, but this one was delicious.

**THE RIGBY IS AN EXPERIENCE FROM THE BAR TO THE RESTAURANT AND NICK SAID THEIR GOAL FOR EVERYONE WHO WALKS IN THE DOOR IS THAT THEY LEAVE HAPPIER THAN WHEN THEY ARRIVED.**

"Our main focus is on providing excellent, friendly service in a warm and casual atmosphere. Since day one, it's always been about ensuring each person who comes through our door leaves happier than when they arrived," said Nick.

The menu at The Rigby changes every six months and with each iteration of the menu Nick said they try to keep it approachable, but interesting.

"The dinner menu consists of lots of small plates, so there's a real emphasis on sharing. I feel it's a more casual and open way to dine, plus you get to try a bunch of different things. Going out for a delicious meal is great, but the shared experience of eating together with friends and family is really much more enjoyable."

First off we had Nick and his dad's famous garlic bread. Nick said it's exactly how he and his dad have always made garlic bread at home - toasted pieces of bread on a wooden board with a steaming metal pot of garlic butter. You dunk a piece of the toast into the pot, drench it in the garlic butter and dig in. It's the one thing on the menu that hasn't changed in six years, Nick said his customers won't let him take it off!

After we devoured that, we had the arancini with aioli and parmesan, crispy cauliflower with za'atar, beetroot, tahini and pomegranate; seared eye fillet with cafe de Paris, herb roasted mushrooms, romesco and parmesan; BBQ broccoli, almond cream, chilli oil and lemon and as a side some fries with cajun salt and house ketchup.

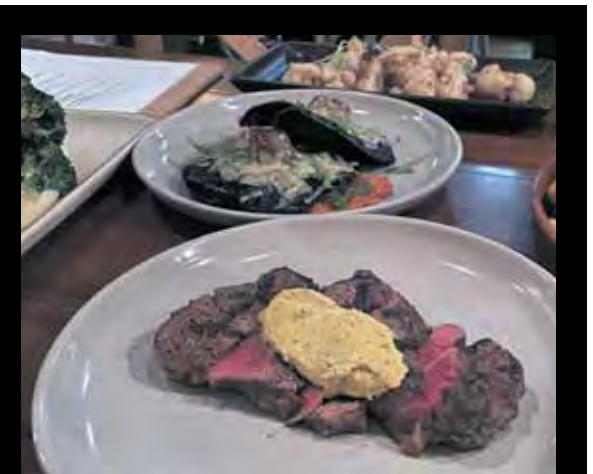
If I had to pick a favourite it would be the seared eye fillet, it was PERFECTLY cooked and just melted in your mouth.

Ask Nick for his favourite and he'll tell you it's like asking his dad who his favourite child is!

You can have a rest while dinner goes down, enjoying your wine while leaning back in the comfiest bench seats with scattered pillows for that extra bit of comfort. Then the waitress will bring over the dessert menu.

The Eton Mess was a bit of fun. It's plated up with a sheet of meringue on the top covering the cream and strawberries and you have to crack that to get to the rest of the dessert, so good.

**FATHER AND SON DUO NICK AND HOWARD HAVE CREATED A SOPHISTICATED, DELICIOUS FOODIE EXPERIENCE IN MAITLAND THAT YOU JUST HAVE TO EXPERIENCE.**



**'AVE A LAUGH WITH**  
HUNTER VALLEY  
**Hydraulink**  
Hose and Fittings  
**BEST UNDER PRESSURE**

Joe received the following text from his neighbour:

I am so sorry Joe I have been riddled with guilt and I have to confess. I have been helping myself to your wife. Day and night when you're not around. In fact, more than you do. I do not get it at home, but that is no excuse. I can no longer live with the guilt, and I hope you will accept my sincerest apology with my promise that it will never happen again.

Joe was in complete shock and didn't know what to do. Until a few seconds later he received another text:

Damn auto correct! I meant Wi-Fi!

**02 6571 1625**

[hvhydraulink@bigpond.com](mailto:hvhydraulink@bigpond.com)

2 Mathry Cl, Singleton NSW 2330

**AMO**  
Australian Mortgage Options

**Guaranteed to improve your home loan or we will give you \$100 for your time.**

CALL US ON  
**133 266**  
[www.amo.com.au](http://www.amo.com.au)

**MECHANICAL SERVICES**

**MECHANICAL SERVICES**

1-3 WALLARAH ROAD MUSWELLBROOK  
**02 6542 5196**

**FOR ALL YOUR MECHANICAL NEEDS**  
PROVIDING SERVICING AND MAINTENANCE FOR ALL MAKES AND MODELS

Our team of experienced technicians ensure all work is carried out to the highest standard. Whether its a car, 4x4, truck, a piece of plant or equipment, we've got it covered.

**SERVICES**

- All automotive servicing and repairs
- Auto electrical services • 4x4 specialists
- AIS inspection station • HVAIS inspection station
- Mining light and medium vehicle maintenance specialists
- ECU remapping and tuning
- Truck servicing and repair • Field Service
- Parts & Accessories • Tyres and Batteries
- Affiliated with most fleet companies

**www.crjmaintenance.com**





CROSSWORD  
HAPPY FATHER'S DAY

THIS MONTH'S CROSSWORD  
THEME IS A TRIBUTE TO FAMOUS  
FICTIONAL DADS IN TV.

ACROSS

- 2. Police officer  
father in: Family Matters
- 5. Dad from: Home Improvement
- 7. Name of the  
dinosaur dad in: Dinosaurs
- 8. Father of three on: Bonanza
- 9. Sports writing dad from:  
Everybody Loves Raymond
- 12. First name of the  
father in: Shameless
- 18. Father on: My Wife & Kids
- 21. First name of the  
father on: The Waltons
- 23. First name of Judy and  
Elroy's dad in: The Jetsons
- 24. First name of Bart and Lisa's  
dad on: The Simpsons
- 26. The dad from: The Brady Bunch
- 27. Eddie and Marilyn's  
father on: The Munsters
- 29. First name of the dad in: The  
Fresh Prince of Bel-air
- 30. Tommy's dad in: Rugrats

DOWN

- 1. Niles and Frasier's dad in: Frasier
- 3. Ruth's father on: Home and Away
- 4. First name of father from:  
Malcolm in the Middle

- 6. Eric's dad on: That '70s Show
- 10. Thomas and Anna's dad  
in: All Together Now
- 11. Bluey and Bingo's dad in: Bluey
- 13. Lamont's  
father on: Sanford and Son

- 14. First name of Pebbles  
dad on: The Flintstones
- 15. Father on: Little  
House on the Prairie
- 16. Jake's dad in: Two and a Half Men
- 17. Elly May's Father on: The  
Beverly Hillbillie's

- 19. Father on: Family Ties
- 20. Kelly and Bud's Dad on:  
Married with Children
- 22. Father from: Roseanne
- 25. Bobby's Dad in: King of the Hill
- 28. First name of the  
father on: The Nanny

HAVE A GO!  
HAVE FUN!

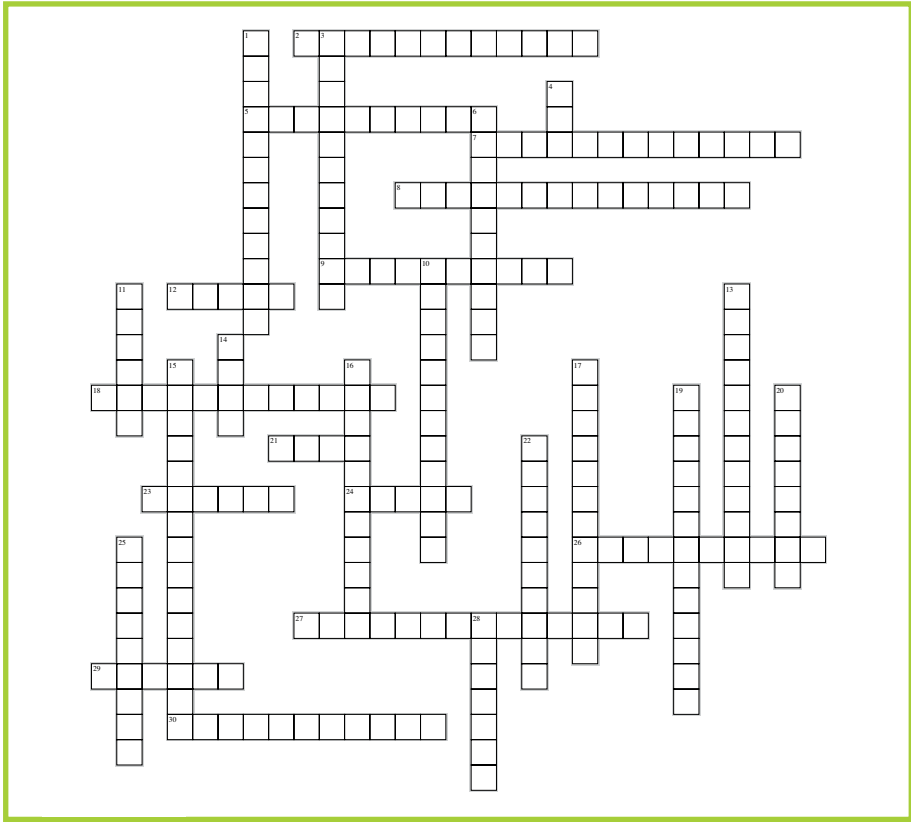
Puzzles brought to you by  
ONSITE | TRAINING AUSTRALIA

@ THE COALFACE PRIZE  
WINNERS

VOLUME 6 - NO 7: AUGUST 2022

CONGRATULATIONS  
TO ALL OUR WINNERS!

- ROBERTS MEATS RAFFLE  
Michelle Neale
- ULTIMATE KIDS VOUCHER  
Jann Bailey
- DOUBLE PASS KNIGHTS GAME  
Allison Lowe  
Jessica Burgess  
Josh Pattison  
Teri Roser  
Rikki-Lee Goodwin
- CRIB BAG  
Benjamin Pittman
- COMPONENTS ONLY GAME  
Scott Dunn
- BCF VOUCHER  
Richard Conley



TRAINER /  
ASSESSOR  
TRAINING

Enterprise Trainer Assessor  
Skillset (TAESS00015)

Made for the Mining, Rail and  
Construction Industries

SPECTRAINING

Delivered for Spectraining RTO-31971



3 Days



No Post Course Work



Up to 15 People per Class

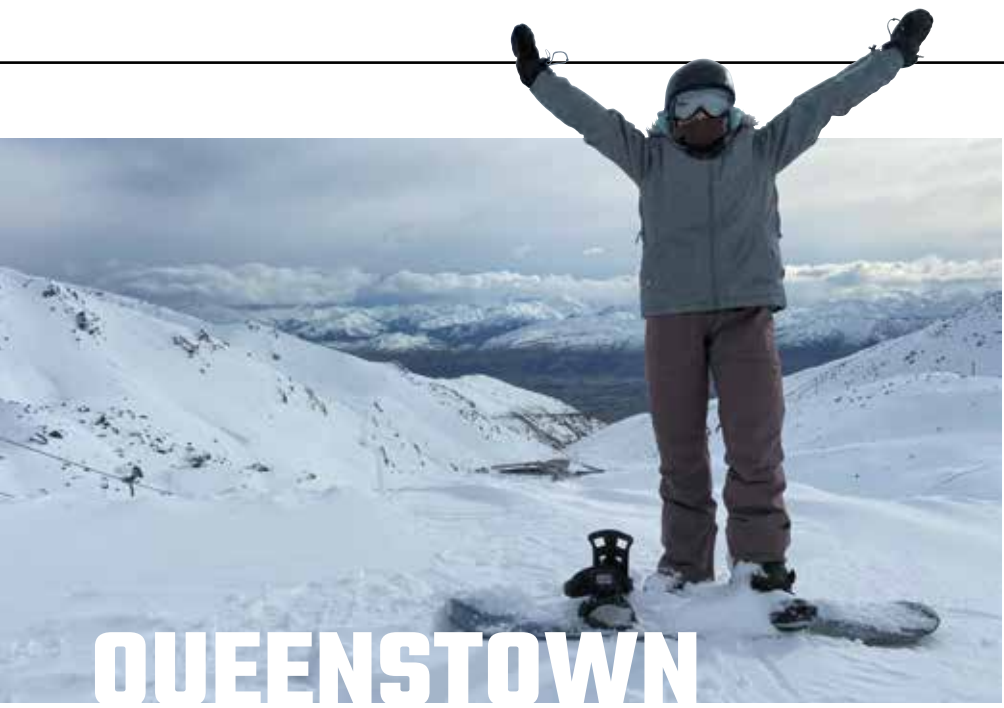
WE SPECIALISE IN:

- ✓ Contextualised Onsite Training
- ✓ Emerging Leadership Training
- ✓ Supervision and Leadership Training

Call Now for a Quote - 0408 869 869 | [www.onsitetraining.com.au](http://www.onsitetraining.com.au)



ONSITE  
TRAINING  
AUSTRALIA



QUEENSTOWN

IS THE PERFECT SPOT FOR A SKIWI...

If you love snowboarding or skiing you've either been or have New Zealand on your bucket list. Queenstown is surrounded by snow-covered mountains with ski resorts The Remarkables and Coronet Peak. Of course, travelling anywhere now includes all sorts of COVID-19 checks and for New Zealand, you have to fill out a travel declaration proving you're fully vaccinated and where you've been.

When you get to customs in Queenstown you get Rapid Antigen Tests which you have to do on your first day and the second last day before you leave and upload the results online.

We stayed in Frankton and hired snowboarding gear from one of the many hire shops in town to take up to The Remarkables.

There are a couple of options for heading up the mountain. You can stand in line and catch a bus or you can drive up yourself. My best advice is to hire a car and drive up to avoid standing in line for hours juggling all of your snow gear.

I've only been snowboarding once so I'm still a beginner. The Remarkables

is perfect for me with plenty of what they call 'green' runs and for the more skilled among us, there are plenty of steeper and longer runs. I surprised myself with how quickly I got the hang of it again. I started on the kid's runs and then made my way up.

IF IT'S YOUR FIRST TIME THERE ARE PLENTY OF LESSONS AVAILABLE SO YOU CAN FIND YOUR FEET.

The view is stunning at the top of the Sugar Bowl lift, you can see Queenstown surrounded by all of the snow-covered hills. It looks great when you're sitting on the ground too which was the view I had a couple of times on the third day.

It had rained all night so the snow was quite slushy. I was going too fast, lost my balance and landed face-first in the snow. I broke my glasses, hurt my knee and managed to get an egg on my head... the view is much better if you stay upright!

We spent three days on the mountain and filled in the rest of our time doing other things in and around Queenstown.

The 'Minus 5 Ice Bar' is a must on the wharf. Don't be fooled by the



MY PASSPORT HAS BEEN SITTING IN A DRAWER AT MY PARENT'S HOUSE FOR YEARS, USED ONCE AND PUT BACK IN ITS PLASTIC SLEEVE. FINALLY, IT'S GOTTEN SOME USE AGAIN FOR A TRIP TO QUEENSTOWN IN NEW ZEALAND.



name though it's even colder inside, when we went it was -6.9 degrees celsius. The whole bar is moulded from ice - the bar, the seats, the statues and even the glass you drink your cocktail from.

If you love a warm mulled wine or a good cocktail, the Little Black Room next to the ice bar is the go-to, and I didn't have a lousy burger or steak anywhere. While we're talking about burgers, Fergburger is worth the hype. The line is always out the door and once you try it you'll see why.

THE SKYLINE GONDOLA IS A GOOD EXPERIENCE IF YOU'VE NEVER BEEN TO QUEENSTOWN TOO AND IF YOU LOVE ADRENALIN YOU'RE IN THE RIGHT PLACE.

In the 1980s AJ Hackett, a young builder from Auckland had a love of thrill-inducing sports. He discovered a ritual by Pentecost Islanders where men threw themselves off 35-metre high woven towers with their ankles attached to nothing but vines.

After finding the perfect formula for a bungy cord, AJ and his equally adrenaline-obsessed mate Chris went to the Greenhithe Bridge in Auckland to test it out. After throwing off a

test weight, that worked, they then had a turn and that's where the Bungy jump was born.

There are several options in Queenstown. While it's temporarily shut right now, there's a 47-metre Bungy The Ledge, the Karawau Bridge Bungy which is 43-metres high into the water and then the big one, the 134-metre Nevis Bungy.

If the Bungy doesn't grab you, there's a giant swing and a Catapult in the Nevis Playground. Now, I was one brilliant spectator this particular afternoon and watched two mates do the swing together. Being a spectator, for me, was heart-stopping enough!

There are plenty of places to drive to around Lake Wakatipu as well. Arrowtown is beautiful in the snow which is about a 15-minute drive, or there's Glenorchy which is about 40 minutes out of town. Both are very quaint little towns on the lake which are definitely worth a visit.

It was a quick trip for us, six days there and back but it was whakamiharo (wonderful in M ori). So, go dig out that passport and kia ngahau (have fun)!

Dedicated  
to helping  
coal miners

Get the most experienced coal mining compensation lawyer in New South Wales on your side. Stuart Barnett has spent over 31 years helping thousands of coal miners towards a better tomorrow. Know where you stand for free with our No Win, No Fee\* offer for coal mining compensation cases.

Stuart and his team can also help with:

- + Workers' Compensation and Negligence Claims
- + Road Accident and Public Liability Claims
- + Wills, Estates and Power of Attorney
- + Conveyancing
- + Super/TPD claims
- + Dust Disease Claims



Stuart Barnett  
State Practice Group Leader  
Accredited Specialist in Personal Injury Law

+ Slater  
Gordon  
Lawyers

GET IN TOUCH  
4915 4800 | 1800 991 394  
[slatergordon.com.au/coal](http://slatergordon.com.au/coal)





# BIG RANGE

# DEEP KNOWLEDGE

# GLOBAL REACH

We source, sell and market to...

keep you tracking

Ask our **local** experts  
for advice today.



# COMPONENTS ONLY

1300 726 801  
[componentsonly.com](http://componentsonly.com)  
/ source / sell / market

