

**In need of a tyre supply solution for your equipment?**

We are a recognised supplier of new tyres for mining, earthmoving and quarry industries across Australia.

**KAL TIRE**

KalTireMining.com

## HUNTER INDUSTRY, COMMUNITY, SPORTS & ENTERTAINMENT

**FREE**

# @THE COAL FACE

Vol 3 No 9: July - August 2019

Available online  
@ [thecoalface.net.au](http://thecoalface.net.au)

## HAVING A BALL!



FROM SOCCER  
SUPERSTARS TO MINING  
MATES, KATE MCSHEA  
AND JOEY BURGESS  
ARE KICKING GOALS  
WHEREVER THEY GO.

**PAGE 26**

## COAL CRUSADER

INDUSTRY ADVOCATE MICK BUFFIER TAKES HOME THE  
2019 OUTSTANDING CONTRIBUTION TO MINING AWARD.



**PAGE 18-19**



# CAN WE FIX IT? YES WE CAN!

**PAGE 8-9**

IT WAS A NAIL-BITING MARATHON AT THE RECENT IPC THAT WENT DOWN TO THE WIRE FOR RIX'S CREEK, THEIR  
WORKERS AND THE SINGLETON COMMUNITY - BUT THE FIGHT ISN'T OVER YET!



**PH +61 (2) 6540 9400**  
[mrssg.net](http://mrssg.net) [info@mrssg.net](mailto:info@mrssg.net)

39-43 Thomas Mitchell Drive  
Muswellbrook NSW 2333 Australia

## Mechanical

**LARGE MINING EQUIPMENT  
MECHANICAL REPAIRS**

### WORKSHOP SERVICES:

- MIDLIFE REBUILDS
- ENGINE CHANGE OUTS
- DEFECT REPAIRS
- EQUIPMENT COMPLIANCE

### FIELD SERVICES:

- PLANT MECHANICS, AUTO ELECTRICIANS, HV ELECTRICIANS
- AIR CONDITION SERVICES







# THE REVOLUTION HAS ARRIVED

WE ARE PROUD TO ANNOUNCE THE ALL NEW  
**G4 EASY TRAY**  
 NOW AVAILABLE IN AUSTRALIA



Minetec engineers have developed a modular body system that revolutionises service, repairs and time. This highly innovative design ensures your cost of ownership is dramatically reduced. After purchasing the G4 you are easily able to adapt spare parts such as sidewalls, headboards and all high wear areas that are monitored and replaceable. With onsite repair capabilities, what was once impossible is now possible.

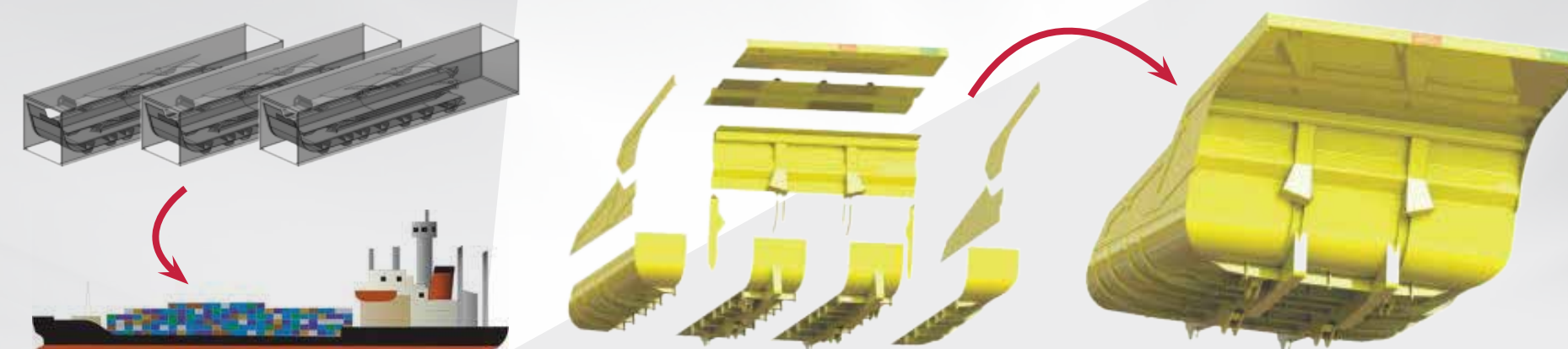
**DEMYSTIFY REPAIR COSTS**  
**PLANNED COMPONENT CHANGE OUT**  
**BUDGET YOUR MAINTENANCE**  
**PREDICTABILITY & CERTAINTY**



- ▶ 25% SAVINGS ON DOWNTIME
- ▶ MASSIVE REDUCTIONS IN OWNERSHIP COSTS AND REPAIR COSTS
- ▶ MAJOR ONSITE REPAIR CAPABILITIES MEANING LESS COMMUNITY IMPACTS THROUGH COMPLEX AND EXPENSIVE LOGISTICS MOVEMENTS FROM SITE TO WORKSHOP FOR REPAIRS AND OVERHAULS.



## TRANSPORT AND LOGISTICS: MINETEC **EASY TRAY** CONFIGURATION

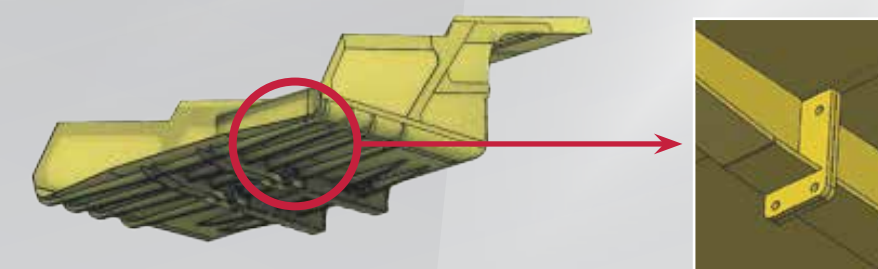


## ANGLED SIDEWALLS FOR ACCELERATION OF MATERIAL WHILE UNLOADING



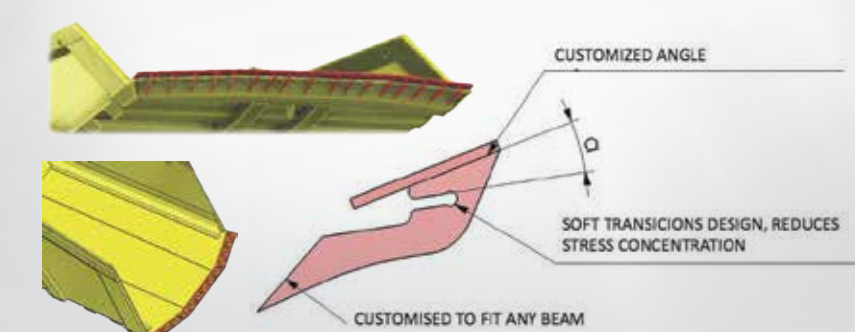
- ▶ REDUCES CARRY BACK
- ▶ CURVED FLOOR-SIDEWALL SECTIONS
- ▶ REDUCES CARRY BACK ISSUES

## INNOVATIVE DESIGN FEATURES



- ▶ G4 DESIGN REPLACES UNDERFLOOR BOLSTER BEAMS FOR 'T' DESIGN BEAMS
- ▶ REDUCES CONCENTRATION OF STRESS.

## OPTIONAL MINETEC DUCK TAIL DESIGN



**PH 0455 552 200**

[www.brauntell.com.au](http://www.brauntell.com.au)





# Fabulous Folks

THIS MONTH WE MET SO MANY ENTERTAINING AND INSPIRING PEOPLE AND WE CAN'T WAIT FOR YOU TO READ THEIR STORIES.

People like Peter Constable who has just celebrated 50 years of service at Hunter Valley Operations JV. This mining legend has seen some monumental changes to the industry in the five decades he's been working as a dragline technician and trainer and he's loved every minute of it.

We also met with industry advocate and all-round good guy Mick Buffier. Mick has recently received the Outstanding Contribution to NSW Mining award, and we can think of no-one more deserving.

Then there's soccer superstars and mining mates Kate McShea and Joey Burgess. These two remarkable ladies are proof that women are kicking goals not just on the field, but also in the mining industry.

**THE BLOOMFIELD GROUP HAS A LONG AND PROUD HISTORY IN OUR REGION, SUPPORTING FAMILIES AND COMMUNITIES IN THE GOOD TIMES AND THE BAD. NOW IT'S TIME FOR US TO SHOW THEM OUR SUPPORT AND HELP MAKE SURE THEIR MINE EXTENSION GETS THE TICK OF APPROVAL.**

TOP: PETER & EDDIE CONSTABLE  
MIDDLE: JOEY BURGESS & KATE MCSHEA  
BOTTOM: MICK BUFFIER

This month we could not get enough of Mines Rescue competitions with both the Hunter and Newcastle comps providing plenty of action. Congratulations to the winning teams, but every single person who is involved in making sure workers make it home safely are winners in our book.

With school holidays here we've put together a list of activities to get the kids out of the house and off their devices. And to make sure you don't overindulge these holidays, check out some advice on eating right from our expert Dietician Sally Macklinshaw. We hope you enjoy this edition!



Publisher  
**Shane Davey**  
shane@thecoalface.net.au  
0408 759 088

Editor  
**Rebecca Connolly**  
rebecca@thecoalface.net.au  
0408 769 699

Journalist  
**Ashley Grogan**  
ashley@thecoalface.net.au  
0402 348 341

Editorial Contributor  
Martha Vessey

Design  
**CarrollMel Design**  
@ The Coalface  
14B/159 John Street  
Singleton NSW 2330  
[www.thecoalface.net.au](http://www.thecoalface.net.au)

## MINERS MATTER

RECENT ELECTION RESULTS SHOWED WHY POLITICIANS SHOULD PAY ATTENTION TO THOUSANDS OF MINERS AND THEIR FAMILIES IN THE HUNTER AND ACROSS NSW WHO CONTRIBUTE SO MUCH TO THEIR LOCAL COMMUNITIES.



Stephen Galilee  
CEO, NSW Minerals Council

There were big voting swings away from political parties seen as not supportive of mining, sometimes in spite of strong support for mining shown by local MPs. This strong message sent by mining voters at recent elections is starting to resonate.

Last month the NSW Government delivered its State Budget. Taxes paid by our industry through mining royalties were at record levels, helping to keep the Budget in surplus while also paying for roads, schools, hospitals and other services. It was a clear demonstration of the importance of our sector to NSW.

In his Budget speech, the NSW Treasurer Dominic Perrotet paid tribute to our hardworking NSW miners, identifying a miner from Cobar in the parliamentary public gallery and saying,

**"HE KNOWS, AS WE DO, JUST HOW MUCH WE DEPEND ON OUR MINERS FOR THEIR CONTRIBUTION TO OUR ECONOMY, AND JUST HOW MUCH THEY DEPEND ON US TO DO THE RIGHT THING BY THEM WITH POLICIES THAT HELP, RATHER THAN HURT."**

The Treasurer's positive gesture of support for our miners and their families followed similar support given in Parliament by the Deputy Premier John Barilaro, who used Question Time recently to say,

**"IF YOU THINK AT TIMES OF DROUGHT AND THE IMPACT IT HAS ON OUR COMMUNITIES AND JOBS, YOU NEED DIVERSITY IN OUR LOCAL ECONOMY AND THAT'S WHY THE MINING SECTOR IS SO IMPORTANT. THAT'S WHY IT IS IMPORTANT FROM A NSW GOVERNMENT PERSPECTIVE THAT WE HAVE A STRONG VOICE FOR MINING WITH A BALANCED APPROACH."**

These words are encouraging, but actions are even better. Families and businesses in the Hunter tell me they want to see solid support for industries like ours that deliver jobs, investment and growth. Hopefully we'll see more support from our politicians with the policies we need for a strong mining sector, particularly in the Hunter.

Stephen Galilee, CEO, NSW Minerals Council



[www.morganengineering.com.au](http://www.morganengineering.com.au)

> **EXPERIENCE** > **QUALITY** > **RELIABILITY**

**P: 02 6572 2032 F: 02 6572 2320 E: [administration@morganengineering.com.au](mailto:administration@morganengineering.com.au)**

- On-Site Mobile Line Boring & Field Services
- Mobile Milling
- Liquid Nitrogen Service & Supplies
- Weld Reclamation
- CNC Machining
- Medium Fabrication
- Caterpillar Service Exchange Components

Ridiculous approval timelines like eight years for the Adani Carmichael project in Queensland and 16 years for Wallarah 2 in NSW play out badly for regions waiting for new jobs. They also affect our reputation amongst international investors who support our mining industry.

Australia's mining industry is committed to an approvals system that works for the environment, investment and jobs, particularly in regional communities. Complex and duplicative assessment and approvals have generated unnecessary delays, adding years to projects getting off the ground.

For a capital-intensive and highly competitive industry like mining, costly delays to major projects are a significant barrier to attracting international capital and investing in additional productive capacity.

We don't want to diminish environmental safeguards or standards. But we do need a more efficient process in meeting regulatory objectives through removal of duplicative, unnecessary processes or prescription which do not enhance environmental outcomes.

THE TWENTY-YEAR REVIEW OF THE ENVIRONMENT PROTECTION AND BIODIVERSITY CONSERVATION ACT 1999 LATER THIS YEAR PRESENTS A NEW OPPORTUNITY TO ENHANCE AND STREAMLINE ASSESSMENT AND APPROVALS PROCESSES.

That review should maintain the Act's objective to promote ecologically sustainable development through

OPINION

## REDUCING RED TAPE

FASTER APPROVALS FOR MINING PROJECTS MEANS MORE HIGHLY PAID, HIGHLY SKILLED JOBS IN THE HUNTER AND RIGHT AROUND AUSTRALIA.



TANIA CONSTABLE

the conservation and ecologically sustainable use of natural resources. It's also time for the newly re-elected Federal Government to work more closely with the states through the Council of Australian Governments to minimise duplication and overlap between approval processes and to introduce risk-based (rather than prescriptive) assessment approaches. And while the courts are important to safeguard our rights and interests, it's clear that organised political activists – who are often not from the local community – appear to be deliberately misusing the appeals process to halt or delay projects.

In many cases – such as the recent revelations that taxpayers are funding the Environmental Defenders Office to delay and prevent mines going ahead – such challenges provide little environmental benefit, yet delay the creation of jobs, the flow of investment, the attractiveness of Australia for investment and cost the project proponent time and money.

THE PRODUCTIVITY COMMISSION

HAS FOUND THAT THE TIME BETWEEN APPROVAL AND LEGAL JUDGEMENT FOR COAL PROJECTS RANGED FROM SEVEN MONTHS TO MORE THAN 24 MONTHS. THAT'S TOO LONG TO WAIT.

We recently asked our Friends of Australian Mining supporter network what they thought about delays in approving mining projects. Nine out of ten survey respondents

## CRIB FOR THE CREW!

HEAVY EQUIPMENT EXPERTS COMPONENTS ONLY KNOW THAT TO GET THE BEST PERFORMANCE OUT OF YOUR EQUIPMENT YOU NEED THE RIGHT FUEL.

That's why they are giving away a \$150 pizza voucher to keep you and your workmates fueled and fired up

BY SUBMITTING AN ENTRY, YOU CONSENT TO THE USE OF YOUR CONTACT DETAILS FOR PROMOTIONAL AND MARKETING PURPOSES.

were concerned about the time taken to approve mining projects in their state.

We welcome the recent announcements by Prime Minister Scott Morrison that his government would review and take action on roadblocks to development, including in mining. These reforms have the potential to unlock up to \$170 billion of resources investment in Australia, including creating more coal jobs in the Hunter.

We're proud of the important role mining plays in supporting and strengthening regional communities. Reducing the time taken to approve projects will allow us to create even more jobs for future generations of Hunter mining workers.

**Tania Constable**  
CEO, Minerals Council of Australia

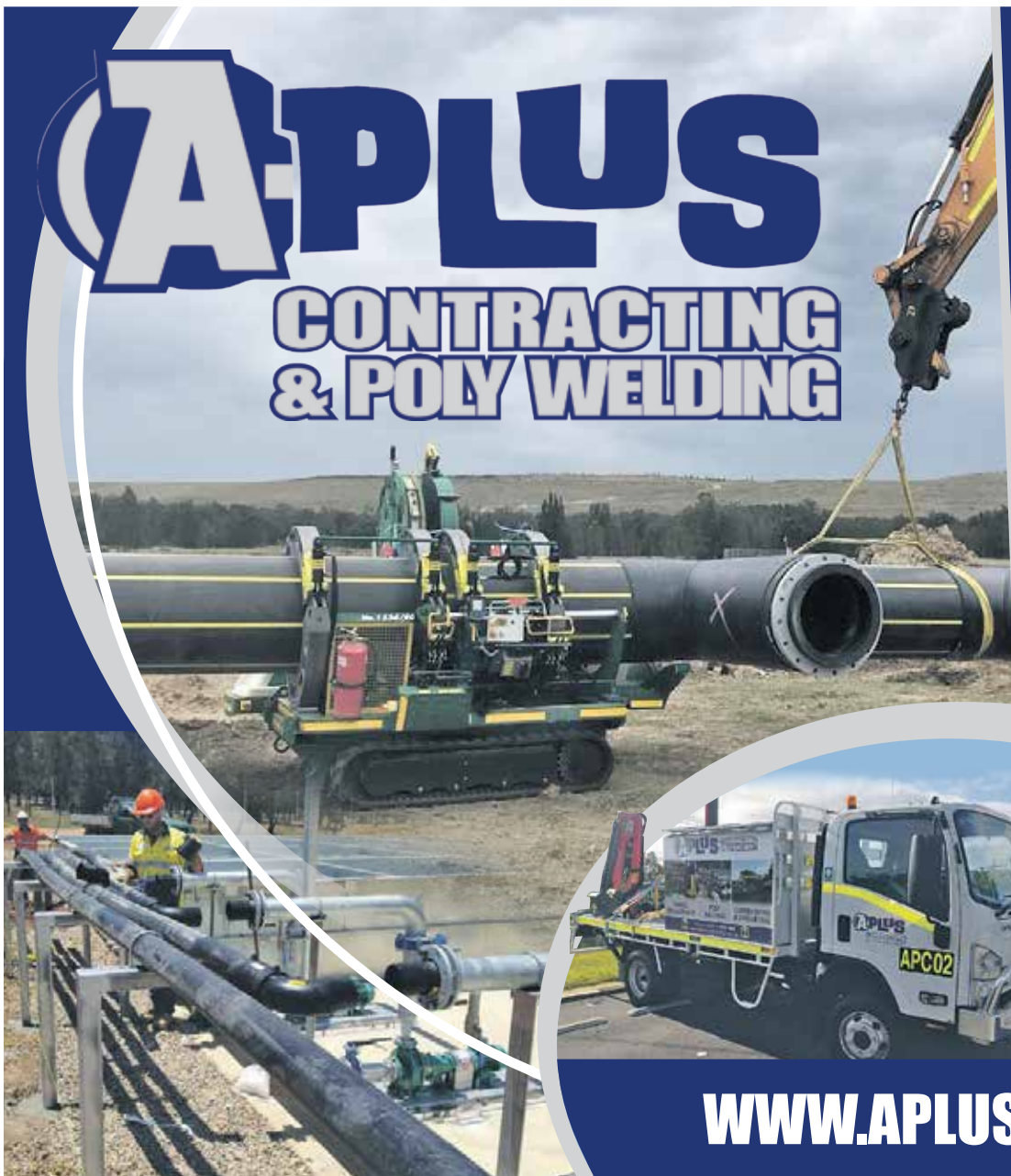


WIN!

so you can get on with the job. For your chance to win simply SMS: COMPONENTS ONLY, your name, and your email address to 0438 474 290.

Limit of one entry per person. LTPM/19/04020

**COMPONENTS ONLY**  
The easiest way to buy and sell heavy equipment components  
[www.componentsonly.com.au](http://www.componentsonly.com.au)



PHONE  
4938 3425  
ON CALL  
24 HOURS  
7 DAYS

## EXPERTS

POLY WELDING  
CIVIL EARTHMOVING  
TRAFFIC MANAGEMENT  
SPECIALISED SERVICES



- POLY WELDING EQUIPMENT TO 800MM
- LONGREACH EXCAVATOR
- SPECIALISED SILT FENCING INSTALLATION MACHINE
- CIVIL WORKS INCLUDING CONCRETING
- GROUNDS MAINTENANCE FLEET
- SKID STEERS, BACKHOES, EXCAVATORS, WATERCARTS, AND GRADERS ALL WITH ATTACHMENTS



[WWW.APLUSCONTRACTING.COM.AU](http://WWW.APLUSCONTRACTING.COM.AU)



# IN THE NEWS...

NEWS ANNOUNCER JESSICA ROUSE FROM RADIO HUNTER VALLEY HAS THE LATEST NEWS STORIES

**TWO THUMBS UP FOR WALLARAH**

The NSW Government has approved the granting of two coal mining leases for the Wallarah 2 Coal Project.

The project involves a capital investment of over \$800 million and will create more than 1,700 direct and indirect jobs. Over its 28-year lifespan, the Wallarah 2 Project will deliver approximately \$830 million in royalties to the NSW Government.

In granting the mining leases, conditions have been implemented to prevent and minimise environmental impacts, and to ensure monitoring, reporting and ongoing environmental management.

**BOOST TO PRODUCE**

Moolarben Coal has received conditional approval to increase production rates and modify surface infrastructure, including construction of a new water treatment facility.

Under its existing development approvals, Moolarben Coal can extract 20 million tonnes of run-of-mine (ROM) coal from its open cut operations annually until 2038. The company has lodged two modification applications to extend the boundaries of two open cut pits and produce an additional three million tonnes of ROM coal each year and also increase the existing coal processing, handling and transportation limits.

The Department of Planning & Environment referred the matter to the Commission for determination.

**POLICE CHASE CRIMINAL STRAIGHT INTO GAOL**

While on the run from police a man unknowingly bolted into St Heliers Correctional Centre.

A 46-year-old man was spotted at a service station drive off at Scone and a chase was initiated by police.

The chase ended two minutes

later when the alleged thief crashed the vehicle through a farm fence near Halcombe Hill.

Officers chased the driver on foot who was unaware he had entered the grounds of St Helier's.

The man was arrested and charged with 15 offences.

**DROUGHT DEVASTATES**

All of the Upper Hunter is now on mandatory level 1 water restrictions. With the dry conditions expected to continue, and Glenbawn Dam sitting at 51.2 per cent capacity Singleton, Muswellbrook Denman and the Upper Hunter Shire including Aberdeen, Scone, Merriwa and the village of Cassilis are all on mandatory level 1 water restrictions from July 1. The restrictions will be enforced from 1 September. Meantime Murrurundi remains on level six water restrictions.

**BLOCKED DRAIN CAUSES SEDIMENT TO LEAK**

Liddell Coal Operations has been hit with a \$15,000 fine after sediment laden water ended up in a local waterway last year.

The NSW EPA said in November last year around 26,000 litres of sediment laden water ended up in Bowmans Creek after debris from a mine blast blocked a sediment containment drain at the mine near Ravensworth.

“The EPA alleges that a

combination of the blocked drain, a failure to inspect the blast area and heavy rain caused sediment laden runoff to breach the containment drain and flow into a pool in nearby Bowman's Creek,” said Acting Director Hunter Lindsay Fulloon.

Liddell Coal Mine has now developed a hazard plan to ensure similar incidents do not occur in future.



**MONEY MONEY MONEY...**

The 2019/20 NSW Budget was handed down in June.

This time around there was \$4 million for detailed design work on the Muswellbrook Bypass, \$550,000 for a new fire station at Muswellbrook, \$7 million for Kelly Street upgrades, with another \$28.7 million for continued construction of the bypass.

Among drought funding, social housing and other bulk lots of funding for the state, just under \$78 million has been budgeted for road upgrades and safety enhancements on roads varying from the New England Highway across to Bucketts Way, and from Limeburners Creek Road to the Golden Highway.

**SINGLETON'S HEARTBREAK**

The community has come together to support a Singleton family who tragically lost three children in a house fire.

Emergency services were called to Brittliffe Close on June 26 and arrived to find a house fully engulfed by flames.

Two twin 5-year-old girls and their 11-year-old brother were killed. Their 31-year-old mother and their 8-year-old sister were taken to hospital for treatment.

A Go Fund Me page was set up not long after the horrific incident which as of the end of June had raised more than \$225,000.

The fire isn't being treated as suspicious as investigators look down several lines of inquiry including a combustible fireplace.



AFTER ALMOST A DECADE OF BEING STUCK IN THE COURTS AND APPROVAL PROCESS, ADANI WILL BEGIN CONSTRUCTION OF ITS \$2 BILLION CARMICHAEL MINE AFTER THE QUEENSLAND GOVERNMENT GRANTED FINAL ENVIRONMENTAL APPROVALS.

Over the course of the last decade the Adani mine has been at the forefront of the fight against climate change. Yet the additional 10 million tonnes of coal a year is barely a drop in global coal consumption which in 2018 was around 5.4 billion tonnes.

Mitigate this against the employment opportunities it will provide. Delivering 1,500 direct and 6,750 indirect jobs during ramp up and construction, with Rockhampton and Townsville the primary hubs for employment.

THE CONTROVERSIAL PROJECT HAS BEEN THROUGH A COMPREHENSIVE AND RIGOROUS APPROVAL PROCESS WITH NO END IN SIGHT, BUT AFTER THE RESULTS OF THE FEDERAL ELECTION WHERE REGIONAL QUEENSLAND LET THEIR VOICE

BE HEARD THE PALASZCZUK GOVERNMENT FINALLY GAVE APPROVAL.

Lucas Dow, CEO of Adani Mining said, “Throughout the past eight years regional Queenslanders have been beside us every step of the way and we thank them for their ongoing support. We're ready to start work on the Carmichael Project and deliver the jobs these regions so badly need.”

People power versus activist antics won out in the end which is great news for Queensland and Australian coal. With a bit of luck, no ill effects will be felt in the NSW coal industry with this industry expansion and together the NSW and Queensland coal industries continue to lead the world in terms of product quality, innovation and safety.

## ‘AVE A LAUGH WITH

One day a man was walking along the beach when he tripped over a lamp. He turned around and kicked the lamp out of anger. A few seconds later, a genie popped out of the lamp.

PH 6545 1066

NOW STOCKING FULL RANGE OF BUSHRANGER POWER EQUIPMENT: CHAINSAWS, BRUSHCUTTERS, BLOWERS AND MOWERS



Reluctantly, the genie said, “Even though you kicked me, I still have to give you three wishes. However, because of what you did, I will also give twice what you wish for to the person you hate the most: your boss.”

So the man agreed and made his

first wish. “I want lots of money”, he said. Instantly 20 million dollars appeared in the man's bank account and 40 million appeared in his boss' account.

For his second wish, the man wished for some sports cars. Instantly a Lambergini, Ferrari and

Porsche appeared. At the same time two of each car appeared outside of his boss' house.

Finally the genie said, “This is your last wish, you should choose carefully.”

The man replied, “I've always wanted to donate a kidney...”

## SERVICE + WE'RE OTR. WHERE EXPERIENCE COUNTS.



SPECIALIST TYRE REPAIR

GATE TO GATE LOGISTICS

ONSITE FITTING SERVICE ACROSS THE HUNTER VALLEY & THROUGHOUT NSW

## OTR TYRE & WHEEL REPAIR SOLUTIONS WITH GATE-TO-GATE LOGISTICS & ONSITE FITTING

visit [tyredoctor.com.au](http://tyredoctor.com.au) or call 1800 897 336

Westpac Rescue Helicopter Service



Ready For Rent PUMP, GENERATOR & COMPRESSOR SOLUTIONS  
4 Balbu Blose, Beresfield NSW 1800 737 687 [www.nationalpump.com.au](http://www.nationalpump.com.au)





# CAN WE FIX IT?

# YES WE CAN!

IT WAS A NAIL-BITING MARATHON AT THE RECENT INDEPENDENT PLANNING COMMISSION THAT WENT DOWN TO THE WIRE FOR RIX'S CREEK, THEIR WORKERS AND THE SINGLETON COMMUNITY - BUT THE FIGHT ISN'T OVER YET!

With the recent determination to continue operations for only a short nine months up to March 2020, the workers and everyone in the Singleton community needs to gear up for now what will be the main event.

The Rix's Creek Continuation of Mining Project (SSD 6300) is seeking approval to extend the existing mining operations at Rix's Creek Mine until 2038, allowing the remaining resource to be extracted.

It would very much be business as usual at the site, with neighbours and the surrounding community not likely to notice significant change. Workers, their families and anyone interested in the continued prosperity of our town need to approach the next phase with even greater passion and determination. Waiting until the eleventh hour is not an option. We came within a week of hundreds of families losing their livelihoods and a great Australian company being resigned to history.

**WE MUST STREAMLINE THE PLANNING SYSTEM.**

We cannot allow projects to be caught up in activist related chaos or 'red tape' delays. It doesn't matter if you are a supporter or detractor of mining, the fact is that our coal industry makes an enormous contribution at a local, state, national and even international level.

**THIS WILL BE THE CASE FOR THE FORESEEABLE FUTURE AND RIX'S CREEK SHOULD BE A MAJOR AND POSITIVE PART OF THAT FUTURE.**

The mine's operator, The Bloomfield Group, said that although the short-term outcome was of some relief for hundreds of employees, their families and many others in the community that rely on

the mine, it was critical for the long-term future of the mine to be clarified.

**BRETT LEWIS, CEO, THE BLOOMFIELD GROUP SAID, "WE HAVE WORKED TIRELESSLY AND IN GOOD FAITH TO FOLLOW AN EVOLVING PLANNING PROCESS OVER SIX YEARS. WE SUPPORT A RIGOROUS AND EXHAUSTIVE PROCESS, BUT THE UNCERTAINTY AND STRESS THAT THE CURRENT SYSTEM HAS CREATED FOR HUNDREDS OF EMPLOYEES AND THEIR FAMILIES HAS BEEN PARTICULARLY DIFFICULT."**

"As a locally and family owned business that has been part of the Singleton community for 30 years, we are asking for your ongoing understanding and support as we continue working through the approval process. We hope to be in touch with more good news soon," he added.

Talking to the people from Rix's Creek, it's the genuine and heartfelt way they share their story and concerns that shines through, but it's far from only company people that are as supportive as they are worried. Many community groups such as The Cancer Council to name just one couldn't do what they do without them.

Glen Parsons, Community Programs Coordinator, Cancer Council NSW told us, "Nearly all our funding comes from the community and particularly in our region of the Hunter Central Coast the Upper Hunter communities are so generous. We're grateful to our local corporate supporters like The Bloomfield Group which encompasses Rix's Creek Mines who choose to support our lifesaving work. The Bloomfield Group has raised over \$500,000 for Cancer Council since

2010, which has helped us support people affected by cancer."

**WHILE @ THE COALFACE IS A STRONG SUPPORTER OF NEW MINES (AND THE ECONOMIC ACTIVITY AND JOBS THAT COME WITH THEM) THAT ARE WELL PLANNED BEING GREENLIGHTED AND DEVELOPED, WE ARE EVEN BIGGER SUPPORTERS OF SENSIBLY PLANNED EXISTING OPERATIONS EXTENDING THEIR PRODUCTIVE LIFE. IT ALLOWS FOR LESS OVERALL DEVELOPMENT AND DISTURBANCE ON ALREADY MINING AFFECTED LAND AND CONTINUED STABILITY FOR THEIR WORKFORCES. A NO-BRAINER WE RECKON.**

We have never known a mining company that takes its obligations more seriously than this one. Be it potential adverse effects on near neighbours, Singleton or the environment, they work to do it to the highest possible standards 24 hours a day 7 days a week. They have the same approach to the futures and welfare of all who work there too. They don't cut corners and 'just enough' is not good enough for this proud family owned company. Doing their absolute best has always been their goal.

Rix's Creek really is a mine of the highest standards and should be positively supported to continue the great work they do with their workforce, the Singleton community, and NSW mining in general. They genuinely are a showcase operator for the mining industry on best practice and integrity.

**WILL WE FIX IT? YES WE WILL!**

# WHAT DO THE WORKERS & COMMUNITY THINK?

**MATHEW**

The mine offers permanent employment and is an Australian owned company. This affects my family as I have been employed at the company for three years. My father has worked for Rix's Creek for 15 plus years, I also have a brother that is currently doing a traineeship at Rix's Creek. I also have two brothers that work for Kings which is a part of the Bloomfield Group, they often work at Rix's Creek. I have recently bought a house in Singleton and have a baby on the way. If the approval doesn't go ahead, I will have to leave the area in search for work.

**NICOLA, TOLSAF CRANES**

We would like to acknowledge our support for the Rix's Creek expansion. We have worked closely with the Bloomfield Group for many years and believe this expansion is essential to the company remaining competitive and viable within the industry. If this company remains viable the flow on effects filter down to even small mum and dad businesses as well as its direct employees. Being a competitive company also allows the Bloomfield Group to remain a company that focuses on its local community and support many programs and organisations within the community it services.

**BRAD**

I have worked for this Australian owned company for 42 years and believe that they are a good company that puts community values first by supporting local people in jobs and supports community events. The money stops here. Their extension if passed runs away from the local community of Singleton which in my view is a better outcome for the locals.

**MEGAN**

My mum works at Bloomfield Coal, and my family are all employed directly or indirectly by the Coal Mining industry. Whether a receptionist, a mechanic, a WHS manager, a Contracts Advisor, a truck driver delivering parts, or a project manager. This whole local area is built on the mining industry whether we like it or not. Less jobs means more stress on the government, on the economy and families.

**ANDREW**

We chose to move to the Singleton area rather than have the daily commute when I started in the mining industry 25 years ago. My wife works at the local hospital and 2 of our children also live and work here. We shop and socialise in Singleton and our grandson is in childcare here. I intend to work at Rix's Creek until retirement and without this extension this is in jeopardy.

**ASH**

I strongly support the Rix's Creek Continuation of Mining Project. If approved permanent jobs will be secured for locals. Local businesses will continue to thrive. The Bloomfield Group supports many community-based charities and programs. These will be adversely affected should mining not be allowed to continue. Environmentally responsible mining will continue if approved.

**DAN**

I believe that mining in the Hunter region is the lifeblood of the community. The region needs mining to ensure strong employment. This affects not only those employed within the mines but other various sectors such as health and retail etc. Rix's Creek and Bloomfield also both continue to give back to the community through charities such as Youth off the Streets, The Cancer Council, Smith Family Appeal and the Salvation Army. They also donate organisations such as the Singleton Hospital, HMRI and the John Hunter Hospital to name a few.

**STUART**

This mine is a big part of our community. I find it disturbing the amount of coal mines being rejected lately. Why does it come to the 11th hour to make a decision on a simple 9 month extension? The stress caused to the workers and their families must be huge. I hope you get this sorted so the people working at this mine can work long into the future. Coal isn't going anywhere.



39-43 Thomas Mitchell Drive  
Muswellbrook NSW 2333 Australia  
**+61 (2) 6540 9400**  
info@mrssg.net  
mrssg.net

## UNRIVALLED MINING SERVICE CAPACITY & SUPPORT



**WHAT WE DO**

We provide a range of support services to enable mining companies to focus on maximising production.

**HOW WE DO IT**

We listen and understand our customers needs, and deliver a service which exceeds expectations. We'll do what we say we'll do. We'll reduce downtime and extend the life of customer equipment. We only hire the best people to ensure a superior 24/7 available service. We'll ensure customer compliance is met and maintained.

**WHY WE DO WHAT WE DO**

We aim to enhance sustainability of mining in the Hunter Valley.

**ONE STOP MAINTENANCE AND SUPPORT SERVICES FOR THE MINING INDUSTRY**

MRS Services Group Production Support offers a comprehensive range of services which focuses on maximising production and minimising downtime for its customers to aid the overall efficiency of core activities, and therefore increasing production capacity.

MRS Services Group Production Support provides a broad range of resources that directly support mining across every phase of the mining cycle.

- Mine Rehabilitation
- Mine Services
- Wet and Dry Plant Hire
- Industrial Services
- Poly and Water Reticulation
- Fabrication
- Mechanical
- Automotive
- Lineboring
- Electrical
- Maintenance Support

**SAFETY | CUSTOMER SERVICE | QUALITY | RESPECT | INTEGRITY & ACCOUNTABILITY**

# DEMO CLEARANCE SALE



DEMO PATROL Ti N1794 **\$71,990** DRIVE AWAY



DEMO SL NAVARA 4WD AUTO N1891 **\$38,490** DRIVE AWAY



**NISSAN**



Singleton automotive centre

**02 4040 6200**

45 JOHN ST, SINGLETON





# Class Act

**MUSWELLBROOK PUBLIC SCHOOL STUDENTS WERE AT THE COALFACE OF MINING REHABILITATION WHEN THEY VISITED MOUNT PLEASANT OPERATION IN JUNE.**

The students got their hands dirty helping out the mine's rehabilitation program by planting trees. The visit was part of the Upper Hunter Mining Dialogue's School Mine Tours Program which is well and truly on the road for 2019.

**THE SCHOOL MINE TOURS PROGRAM SCHEDULE SEES 18 SCHOOLS FROM THE MUSWELLBROOK-SINGLETON AREA TOURING 13 UPPER HUNTER MINES. THE SCHEDULE INCLUDES 21 TOURS ACROSS THE YEAR WITH ABOUT 800 YEAR 5 AND YEAR 8/9 STUDENTS PARTICIPATING.**

May and June kicked off the 2019 tours program with six mines hosting tours from 10 schools - Mt Pleasant Public School students toured Glendell Mine, Australian Christian College, Singleton, visited Hunter Valley Operations, St



Joseph's Primary School, Denman, Pacific Brook Christian School and Denman Public School pupils travelled to Bengalla Mine, Mount Pleasant Operation had a visit from Muswellbrook Public School, Mount Owen mine hosted students from King Street Public School while Jerrys Plains, Broke and Milbrodale public schools combined to tour Wambo Coal.

The Dialogue tours program aims to offer a fact-based, first-hand educational experience to teach local students about the impacts and benefits of coal mining in the Upper Hunter.

The Dialogue offers the free tours to all schools in the Singleton-



Muswellbrook educational catchment and the program uses educational materials and messaging developed by a Dialogue working group made up of teachers, community members and industry and local government representatives.

**TOP: KING STREET PUBLIC SCHOOL STUDENTS AT MT OWEN MINE. MIDDLE: MUSWELLBROOK PUBLIC SCHOOL STUDENTS AT MOUNT PLEASANT OPERATION. LEFT: DENMAN PUBLIC SCHOOL STUDENTS AT BENGALLA MINE. RIGHT: BROKE PUBLIC SCHOOL STUDENTS AT WAMBO MINE.**



## HERE'S THE DRILL

A FEW YEARS AGO, QUARRY MINING GOT ONE OF ITS FIRST BIG BREAKS IN THE MINING INDUSTRY THANKS TO THE GUNNEDAH/ NARRABRI INDUSTRY AND WHITEHAVEN. BUILDING SUCCESS ON SUCCESS EVER SINCE, THE COMPANY HAS JUST STEPPED UP AGAIN BUYING RESPECTED DRILLING EQUIPMENT COMPANY ALMINCO.

We've been following the fortunes of Quarry for a long time now and in our humble opinion they are one of the best suppliers to the mining industry in existence. They're also some of the nicest people to ever pull on the hi-vis. So it is with great pride we talked to excited head honcho Kari Armitage about their latest expansion.

**KARI TOLD US, "QUARRY MINING IS SO PROUD TO ANNOUNCE ITS ACQUISITION OF ALMINCO PTY LTD. SINCE 1978, ALMINCO HAS BEEN A HIGHLY RESPECTED NAME IN THE COAL MINING INDUSTRY SUPPLYING QUALITY MACHINERY."**

"Quarry Mining is now the proud owner of the Alminco product range including the Gopher Roofbolter. We are also now the exclusive distributor of the Clark Eagle Drill. Having OEM status over this equipment will complement and

enhance our drilling consumables range and give Quarry Mining the largest hire fleet of intrinsically safe handheld bolting and grouting pneumatic equipment in Australia."

She continued, "Building this type of machinery specific to our mining industries conditions is something we want to continue to do in Australia to ensure our mine workers are using the safest and best tools for their purpose. Furthermore, it allows for good engineering trades to continue in our area and give good career opportunities for local people."

Success it built on hard work and making the best of the opportunities available to you. Quarry Mining well and truly have both of those bases covered. Congrats guys! Keep up the good work.



# Hunter Lifttrucks

IS NOW

# MLA HUNTER

## YOUR LOCAL FORKLIFT SPECIALISTS

NEW AND USED SALES • HIRE • PARTS • SERVICE



## Stuck with the wrong tool?

Whether a job seeker or employer, navigating through the recruitment process can be daunting. You need the right tools for the right job!

Here at A.I.R Recruitment, we've got the tools, strategies and solutions for all your recruitment and job search needs.

Contact us today.

**air RECRUITMENT**

ph 0402 613 510

airrecruitment.com.au

attract. integrate. retain.

[www.hunterlift.com.au](http://www.hunterlift.com.au)

**NEWCASTLE**  
02 4967 4622

**MITSUBISHI FORKLIFT TRUCKS**

53 Rural Drive Sandgate, 2304

**CENTRAL COAST**  
0402 087 831



WIN!

# COOL CRIB

YOU ARE GUARANTEED TO ADD A LITTLE SWAG TO YOUR SHIFT WITH OUR INSULATED PVC CRIB BAG.

Made by Rugged Xtremes and in classic Coalface yellow, we reckon our crib bag will be as sought after as a Louis Vuitton.

**FOR YOUR CHANCE TO WIN, SIMPLY SMS: COOL CRIB, YOUR NAME, AND YOUR EMAIL ADDRESS TO 0438 474 290.**

Limit of one entry per person. LTPM/19/04020

By submitting an entry, you consent to the use of your contact details for promotional and marketing purposes.



PUBLISHERS OPINION

# TIME FOR another whinge

RESOURCES FOR REGIONS, TOWN BYPASSES AND PERPLEXING PLANNING – THE BIG ISSUES FOR PEOPLE IN OUR AREA ARE PRETTY OBVIOUS AND EASILY UNDERSTOOD – SO WHY IS PROGRESS SO HARD TO GET GOING.

I worry a bit that this column is often just a whinge fest, but with so much inaction, overpromising and underdelivering – not to mention reader feedback, it's hard not to keep banging on about getting the things done that need to be done.

**IN NO PARTICULAR ORDER LET'S GET THE WHINGING STARTED WITH THE OLD CHESTNUT THAT IS THE RESOURCES FOR REGIONS PROGRAM – OR 'BEG FEST' AS IT HAS BEEN DESCRIBED TO ME.**

What is a truly mining affected region? The Upper Hunter is the answer. Don't get me wrong, we love our part of the world, but our part of the world bears the costs of keeping our state rich and that's an understatement.

We deserve to be right at the front of the queue each and every round of funding. That's not sour grapes or entitlement, just a just reward for how much we put in. Non mining areas are welcome to share and benefit as well, but start where it's deserved and sorely needed. The time has long passed where we deserve concrete guarantees and not just 'pot luck' politics.

**ON THE ROADS SIDE OF THINGS ALL THE GRAND PROMISES ARE GETTING US NOWHERE FAST. THE CURRENT POLITICS SURROUNDING IT ALL AT A STATE AND FEDERAL LEVEL SHOW US WHAT THOSE IN POWER ARE REALLY THINKING ABOUT US. WITH CONTEMPT IN MY OPINION.**

The problem is they are doing nothing. I am happy

to bet \$1000 to charity that none of the promises around bypasses and major regional road upgrades to keep our communities safe will amount to anything during either the current state or federal government terms. Stop the bullshit and start the building. Please, please take my money and prove me wrong.

**AND THEN THERE IS THE DARK ART THAT IS THE PLANNING PROCESS. A PROCESS THAT MANY OF OUR FUTURES RELY ON THE POWERS THAT BE GETTING RIGHT.**

The problem is the powers that be have designed a process devoid of decisions or timeframes.

From there a default position of ultra-left-wing protesters are given unreasonable and out of touch influence in the process and state significant (not to mention locally) developments such as The Rix's Creek continuation and United Wambo JV seem stalled on a carousel of uncertainty.

It's really important to get right, but let's hope it's not the wrong right and it doesn't go down to the wire as is usually the case.

Boring stuff I know, but geez the outcomes have a huge impact on all our lives. I'd love to get this all fixed and focus on other things to start whinging about.



**Allweld Services provide welding supervision & inspection with certified professional results, spanning the Mining, Structural & Pressure Vessel industries.**

**QUALIFICATIONS:**

- AWI – Welding Supervisors AS 2214
- TAFE – Welding Supervisors AS 2214
- TAFE – Welding Supervisors AS 1796 Cert 10
- WTIA – Welding Supervisors AS 1796 Cert 10
- TAFE – Welding Inspection
- WTIA – IIW Welding Inspection

**CAPABILITIES:**

- Welder Qualifications
- Welding Procedure Development & Qualification
- Consumable Qualification & Selection
- Third Party Inspection
- Coordinate Testing & Reports
- Welding Consultancy

- Weld Mapping
- Weld Register
- Productivity Efficiency Improvements
- Weld Costings
- Operator Training
- Trouble shooting

**Beresfield**  
Unit 2  
8 Yangan Drive, Beresfield NSW 2322  
Phone: **1300 663 888** (Option 1)  
Fax: 02 4968 3889  
Email: [sales@allweldservices.com.au](mailto:sales@allweldservices.com.au)  
Monday - Friday: 7.15am - 4.30pm  
Saturday: Closed - Sunday: Closed

**Muswellbrook**  
7 Blakefield Road  
Muswellbrook NSW 2333  
Phone: **1300 663 888** (Option 2)  
Fax: 02 4541 3045  
Email: [mbrook@allweldservices.com.au](mailto:mbrook@allweldservices.com.au)  
Monday - Friday: 7.15am - 4.30pm  
Saturday: Closed - Sunday: Closed

**Flame N Arc**  
Unit 9  
8 Young Street, East Maitland NSW 2323  
Phone: **1300 663 888** (Option 3)  
Fax: 02 4541 1006  
Email: [sales@allweldservices.com.au](mailto:sales@allweldservices.com.au)  
Monday - Friday: 7.30am - 4.00pm  
Saturday: Closed - Sunday: Closed

[www.allweldservices.com.au](http://www.allweldservices.com.au)



# TRADECORE INDUSTRIES

**MINING MAINTENANCE & LV FLEET MANAGEMENT**

**PH (02) 6572 4811** [www.tradecore.net.au](http://www.tradecore.net.au)

**MAJOR CAPABILITY & EXPERIENCE DELIVERED WITH FAMILY VALUES**

**Tradecore are your one stop shop for complete maintenance services:**

- Earthmoving Equipment repairs
- High Voltage and Auto electrical Services
- Light vehicle Workshops in Singleton and Muswellbrook to carry out: Repairs/Service, Fleet management and fitting out to mine specs

- Commercial 4x4 Light vehicle and Truck Hire
- Labour hire
- Asset management
- Fabrication and Welding Repairs

**SINGLETON 16 MAGPIE ST**  
**MUSWELLBROOK 10B CARRAMERE RD**



@ THE COALFACE

DON'T MISS OUT ON THIS MUST ATTEND EVENT.BOOK YOUR TICKET NOW [WWW.AIMEX.COM.AU](http://WWW.AIMEX.COM.AU)

The AIMEX Mining Pavilion was created to provide mining companies with a platform to engage with the industry, promote their initiatives as well as drive recruitment and will feature some major players who are all significant contributors to our mining industry, economy and workforce.

WHITEHAVEN

Whitehaven Coal will also be joining the AIMEX Mining Pavilion on stand P132. Whitehaven Coal is Australia's largest independent coal producer and the leading coal producer in North West NSW. The company operates a total of six mines in the Gunnedah Basin, producing a combination of thermal and metallurgical coal primarily exported to markets in North and South Asia.

YANCOAL

The fifth-leading mining company participating in the AIMEX Mining Pavilion is Yancoal Australia. Yancoal is Australia's largest pure-play coal producer operating five mines and managing five others across New South Wales, Queensland and Western Australia. Yancoal Australia is a significant employer within the mining sector with a current workforce of more than 3,000 people across its operations. Yancoal Australia will exhibit on stand N135.

FOR THE FIRST TIME IN THE HISTORY OF THE ASIA-PACIFIC INTERNATIONAL MINING EXHIBITION (AIMEX), LEADING MINING COMPANIES WILL BE EXHIBITING AT THE EVENT AS PART OF THE AIMEX MINING PAVILION.

# PAVILION PLAYERS

## Centennial Coal

CENTENNIAL

Centennial is an Australian coal mining company supplying thermal coal to the domestic and export markets. With five underground mines and a workforce of over 1,700, Centennial fuels approximately 40% of NSW's coal-fired electricity. Centennial will be exhibiting on stand N129 at the AIMEX Mining Pavilion.

## MACHEnergy

MACH ENERGY

Mach Energy develops and operates economical and efficient energy resources primarily for the international market and operate the Mount Pleasant thermal coal project. Mach Energy assists in facilitating the transition to a low emissions economy by supplying their high-quality coal to some of the world's most advanced and high efficient power plants. Visit Mach Energy on stand N133.

# GLENCORE

GLENCORE

Exhibiting alongside Centennial is Glencore Australia, one of Australia's largest mining

companies operating in the country for over 20 years. Glencore has grown to become a leading commodity producer and provider operating 25 mines across New South Wales, Queensland, Western Australian as well as the Northern Territory. Find Glencore Australia exhibiting on stand P128.

## Monadelphous

TOGETHER WE GROW.

# GROW WITH US IN MUDGEE

Monadelphous' Maintenance & Industrial Services continues to experience high levels of growth both nationally and on the east coast. Our fixed and mobile plant business units service mine sites across NSW – From Pit to Port. We have the resources to rapidly respond to our clients needs.To continue to deliver the highest level of service and value for the clients operations, we have expanded into the Mudgee region. Our Mudgee branch is supported by our larger operations in the Hunter Valley allowing our local branch to flex when required and rapidly respond to our clients short term critical needs. At Monadelphous we are passionate about building long lasting relationships built on our core values Safety, Integrity, Teamwork, Loyalty & Achievement.

## MUDGEE OPERATIONS

Our Mudgee Operations offer local Mechanical and Electrical trades for our clients all under One roof – Boilermakers, Fitters and Electricians.

Our branch also offers the area's largest local scaffolding service with over 60 tonne of scaffold available in our Mudgee yard and a further 150 tonne available at short notice from the Hunter Valley. Our Mudgee Workshop is equipped to fabricate anything our clients require and our fabrication and paint workshops in the Hunter are setup to fulfill our clients larger structural steel requirements.

## MUDGEE OPPORTUNITIES

Mudgee is forever bustling. With a vibrant wine industry and numerous events every weekend it offers a perfect rural lifestyle. A convenient 3 hour drive to Sydney or Newcastle.

Our Mudgee Branch is currently hiring:  
**Electricians**  
**Boilermakers**  
**Fitters**  
**Scaffolders**  
**Riggers**  
**TA's**

Be part of something special in Mudgee – Apply today at [www.monadelphous.com.au/careers](http://www.monadelphous.com.au/careers)

12 @ THE COALFACE | JULY-AUGUST 2019

@ THE COALFACE | JULY-AUGUST 2019 13





## MAKING MINERS

MORE THAN 100 RESOURCES SECTOR INDUSTRY REPRESENTATIVES AND COMMUNITY MEMBERS APPLAUDED 30 STUDENTS FROM ACROSS THE HUNTER IN GRADUATING THE 2019 TAFE NSW MUSWELLBROOK MINING SKILLS PROGRAM.

The comprehensive six-month program complements the course delivery of qualifications the students are studying at TAFE NSW – in the areas of either machining, electrical, metal fabrication or automotive.

All first-year apprentices, the students are working throughout their apprenticeship with a resources company based in the Hunter. Through the program they learn the fundamentals of each trade area and receive an overall education on mining, including several visits to mining and heavy industry environments.

TAFE NSW Regional General Manager Susie George said the ceremony recognised all students' achievements.

**"ALL 31 OF OUR MINING PROGRAM STUDENTS HAVE EXCELLED IN THEIR EFFORTS TO GAIN A STRONG UNDERSTANDING OF THE RESOURCES SECTOR AND THE ROLE THEY WILL PLAY WITHIN IT," SAID MS GEORGE.**

"It is wonderful to be able to celebrate with them tonight amongst their families, friends and industry representatives who have welcomed them into the fold. I am sure each student is excited to now be able to spend much more time learning in their workplace, and to concentrate solely on their apprenticeship. They will do this while continuing their studies at TAFE NSW," she added.

**AWARD-WINNER BEN FERRIERIS STUDYING A CERTIFICATE III IN MOBILE PLANT TECHNOLOGY AT TAFE NSW KURRI KURRI. HE SAID THE PROGRAM HAD ENABLED HIM TO PURSUE HIS CAREER GOALS.**

"I worked in the WA mining industry as a trades assistant and operator. I decided that instead of being someone's assistant I wanted to gain in-depth knowledge and take control of my career," said Ben.

"Through this program I've learned a lot of new skills that I know will benefit me. It provides a good taster of each of the key trade areas, which you should absorb because there's often a crossover into your own field."

"I can honestly say I have come away from the TAFE NSW Muswellbrook Mining Skills Program with a lot more knowledge and a greater understanding of how things work in the industry. Now I can't wait to get onsite and meet some co-workers... get involved. It's been an intense six months," he added.

**HIGHEST ACHIEVER (DUX) – ANGIE SIMPSON, SINGLETON, BHP APPRENTICE**

**OUTSTANDING ACHIEVEMENT – BEN FERRIER, MUSWELLBROOK, BHP APPRENTICE**

**OUTSTANDING ACHIEVEMENT – ANTONIA MONCRIEFF, STOCKTON, PORT WARATAH COAL SERVICES APPRENTICE**

## WORTHY WINNERS

TWO LOCAL TAFE NSW STUDENTS ARE THE WINNERS OF MINING ELECTRICAL AND MINING MECHANICAL ENGINEERING SOCIETY (MEMMES) SCHOLARSHIPS.



The deserving recipients of the \$2000 scholarships were Krystal Hickey from Paxton, a TAFE NSW Certificate III in Mobile Plant Technology student, and Oliver Davidson from Mount Hutton, a TAFE NSW Certificate III in Electrotechnology student.

A technical society within Engineers Australia, MEMMES partnered with the Hunter TAFE Foundation to offer the scholarships to encourage further study for workers in the mining industry. Anyone who was enrolled in or had recently completed an electrical or mechanical engineering trade qualification was eligible to apply. Four scholarships were provided in total, with the other recipients from western NSW.

**MEMMES NATIONAL CHAIR, PETER WHIPP, SAID, "DUE TO THE HIGH CALIBRE OF APPLICATIONS THIS YEAR, THE SELECTION COMMITTEE DECIDED TO AWARD FOUR SCHOLARSHIPS RATHER THAN THE USUAL TWO. OUR GOAL IS TO ENCOURAGE APPRENTICES TO FURTHER THEIR EDUCATION AND**

**GO ON TO TAKE LEADING INDUSTRY ROLES, AS THE ENGINEERS OF THE FUTURE. VITAL ROLES LIKE THESE PROVIDE A SIGNIFICANT CONTRIBUTION TO THE SECTOR'S ONGOING SUCCESS."**

Hunter TAFE Foundation president Gary Webb said, "We are delighted to work with MEMMES to support and inspire mining industry participants into advancing their engineering studies. This generous donation will greatly assist four Australians to help realise their tremendous potential as opportunities in their sector pick up speed."

Krystal plans on using her scholarship money to continue her learning in the fourth year of her apprenticeship by applying for an auto electrics course while Oliver plans on enrolling in the Diploma of Electrical Engineering course to allow him to progress his career in the industry and work as an electrical engineer.

## MRC Australia... the coolest option in the Hunter Valley!

### INNOVATIVE COOLING SOLUTIONS FOR...

- MINING
- INDUSTRIAL
- MARINE
- AUTOMOTIVE
- AGRICULTURAL
- RAIL



6572 1214

[www.mrcaustralia.com.au](http://www.mrcaustralia.com.au)

7 ENTERPRISE CRESCENT MAISON DIEU 2330

In the past 12 months our Australian coal business has:



Rehabilitated almost **500ha** more land than we disturbed.

Invested almost

**\$5 million**

in more than **40** community partnerships.



Spent more than

**\$4.5 billion**



with over **10,000** businesses.



Trained almost **200 apprentices & 93 graduates.**

Provided employment for almost

**10,000 people.**



Renewed a long-term partnership with

**Star Struck**

that will take our commitment beyond **\$1 million.**

GLENCORE

... proudly supporting our local communities





# WE'LL KEEP YOU OPERATING





### HOSES & FITTINGS



### FIRE SUPPRESSION



### QUICK FILL



### SAFETY



### LUBRICATION



### SPILL CONTROL

## Contact:

**Dubbo**  
42 Bourke Street  
(02) 6867 9600

**Gunnedah**  
40-44 Allgayer Dr. Gunnedah  
(02) 6742 4988

**Lithgow**  
1 Ian Holt Dr. Lithgow  
(02) 6355 7004

**Maitland**  
129 Racecourse Rd. Rutherford  
(02) 4932 1120

**Mudgee**  
36 Sydney Rd. Mudgee  
(02) 6372 3454

**Muswellbrook**  
88 Maitland St.  
(02) 6543 4255

**Newcastle**  
20 Munibung Rd. Cardiff  
(02) 4954 5933

**Orange**  
97 Elsham Ave. Orange  
(02) 6360 2944

**Singleton**  
14 Maskey Rd. Mt Thorley  
(02) 6574 2782


**Tamworth**  
4/61 Barnes St. Tamworth  
(02) 6762 0600



# 134-222

24 HOURS - 7 DAYS  
www.pirtek.com.au

# LEARN FROM THE LAWMAN



STUART BARNETT IS OUR MINING INDUSTRY'S LEADING PERSONAL INJURY LAWYER. THIS MONTH HE HAS SOME IMPORTANT ADVICE IN RELATION TO RECENT CHANGES TO PENALTIES FOR FIRST TIME LOW RANGE DRINK DRIVING OFFENCES.

There have been some recent and significant changes to the penalties that may be applied in cases of driving under the influence of alcohol and in the way those penalties can be applied. Today we have a brief look at the changes as they apply to first time offenders in the low range concentration of alcohol.

**WHILST MOST PEOPLE WOULD BE FAMILIAR THE IDEA THAT A BLOOD ALCOHOL CONCENTRATION OF BETWEEN .05 AND .08 PUTS YOU IN THE LOW RANGE CATEGORY THERE ARE CIRCUMSTANCES WHERE EVEN BEING JUST OVER ZERO COULD SEE YOU IN BREACH OF THE LAW.**

For example, a learner driver or a driver on their P1 or P2 license are not able to drive with any alcohol in their system at all. In addition, persons such as taxi drivers, bus drivers and drivers of vehicles carrying dangerous goods are not able to drive once they reach a blood alcohol concentration of .02. All of these examples fall into the category of low range drink driving offenses.

It used to be that offenders in the low range category would be charged by the police and then required to appear in Court for sentence. The offender would generally be able to continue driving whilst awaiting sentence and would present their plea to the Magistrate and receive their sentence which could range from no conviction being recorded to the imposition of a fine and potentially a loss of license.

*This is general advice and because your individual circumstances will vary, I recommend seeking out specific advice for your needs.*

**STUART BARNETT, SLATER & GORDON LAWYERS**

Offenders would still have the option of appealing to the Court where they believe that their circumstances might lead to the Magistrate not recording a conviction or imposing a lower penalty. However, by going to Court you not only have the opportunity of not being penalised or receiving a lesser penalty you also face a higher maximum fine of up to \$2,200 and a suspension of up to 6 months.

**THE GOVERNMENT WHEN ANNOUNCING THE CHANGES NOTED THAT 56% OF PERSONS CHARGED WITH LOW RANGE DRINK DRIVING OFFENCES ESCAPED PENALTY WHEN THEY APPEARED AT COURT.**

The inference being that the Government expects that a significant number of offenders issued with an on the spot fine and suspension will accept it rather than proceed to Court. It is still possible to receive a lesser penalty in Court, where many different circumstances can be taken into account but if you find yourself in this position it is recommended that you take legal advice before appealing the penalty to avoid unnecessarily exposing yourself to a higher penalty.

UNDER THE RECENT CHANGES THE POLICE MAY NOW IMPOSE AN ON THE SPOT FINE OF \$561 AND TAKE YOUR LICENSE OFF YOU AND SUSPEND IT FOR THREE MONTHS. THE MAJOR DIFFERENCE BEING THAT YOU DO NOT HAVE TO GO TO COURT IF YOU DECIDE TO ACCEPT THE PENALTY AND SUSPENSION, BUT YOU ARE IMMEDIATELY SUSPENDED FROM DRIVING FOR THREE MONTHS.

# SWEET!



## WIN!

THANKS TO CHEF NICK AT CAFÉ LA LUNA, WE ARE GIVING AWAY A SCRUMPTIOUS CAKE OF YOUR CHOICE.

Choose any cake from their delectable range, including Malteser, Strawberries & Cream, Chocolate Mud or more. Share with the guys in the crib room or keep it all for yourself!

FOR YOUR CHANCE TO WIN, SIMPLY SMS: CAFÉ LA LUNA, YOUR NAME AND YOUR EMAIL ADDRESS TO 0438 474 290.

Limit of one entry per person. TPM/19/04020

CAFÉ LA LUNA | PH 02 6543 3594  
SHOP 5, 168 BRIDGE STREET, MUSWELLBROOK

BY SUBMITTING AN ENTRY, YOU CONSENT TO THE USE OF YOUR CONTACT DETAILS FOR PROMOTIONAL AND MARKETING PURPOSES.

HEALTH EXCELLENCE

GLENCORE'S RAVENSWORTH OPEN CUT MINE - IMPROVING FATIGUE MANAGEMENT

The mine implemented the "GuardVant OpGuard Fatigue Monitoring System" on the 54 haul trucks on the site, which monitors and alerts the operator if it detects fatigue. A review six months after the system was implemented found a 450% increase in operators taking breaks to avoid fatigue and the success has resulted in the installation of the GuardVant system in haul trucks at all Glencore Coal Australia open-cut operations.

WHITEHAVEN COAL'S NARRABRI UNDERGROUND MINE - NARRABRI GUMBOOT IMPROVEMENTS TRIALS

In response to reports of foot, ankle and leg pain, a team of industrial designers, specialised manufacturers and traditional rubber boot craftsmen led by Gunnedah-based podiatrist Penny Crawford developed the WedgeTech Personalised Lock-Fit System. The System works by locking the foot into a stable position into the boot and has been a resounding success.

SAFETY EXCELLENCE

CENTENNIAL COAL'S MYUNA COLLIERY - MONORAIL BRACKET

To reduce shoulder injuries Centennial developed the 'Monorail Bracket System' that hangs down from the mine ceiling, eliminating the need for miners to install anything above their heads. The elimination of mesh, in favour of the brackets, drastically lowered operating costs, increased productivity and, most importantly, enhanced the health and safety of employees.



## FANTASTIC Finalists

THE FINALISTS FOR THE NSW MINERALS COUNCIL'S ANNUAL HEALTH, SAFETY, ENVIRONMENT AND COMMUNITY AWARDS HAVE BEEN ANNOUNCED, SHOWCASING SOME OF THE INDUSTRY'S TOP INNOVATORS AND CORPORATE CITIZENS.

NEWCREST MINING LIMITED'S CADIA VALLEY OPERATIONS - LHD BUCKET ROTATIONAL STAND

After a rolling R29000 bucket dislodged a crane travelling beam from its rails during maintenance causing it to collapse, the team at Cadia Valley Operations designed and built a Bucket Rotational Stand. The manoeuvrability of the bucket in the Rotational Stand allows maintenance personnel safer and more effective access to work areas, eliminating the need to climb on top of the bucket or work in positions that are ergonomically challenging.

WINNERS ANNOUNCED AT THE 2019 NSW MINERALS COUNCIL HSEC CONFERENCE. AUGUST 4 - 7 AT CROWNE PLAZA  
WWW.NSWMINING.COM.AU/EVENTS/NSW-MINING-HSEC-CONFERENCE-AND-AWARDS-DINNER

# Dedicated to helping coal miners

Stuart Barnett is the most experienced coal mining compensation lawyer in NSW with over 28 years practising in this specialised area. Over this time, he and his team have helped thousands of coal miners access the compensation and support they deserve.

Stuart will explain your rights and take you step by step through the legal process. With our No Win No Fee\* offer and a free initial appointment\*\*, it doesn't cost you anything to know where you stand.



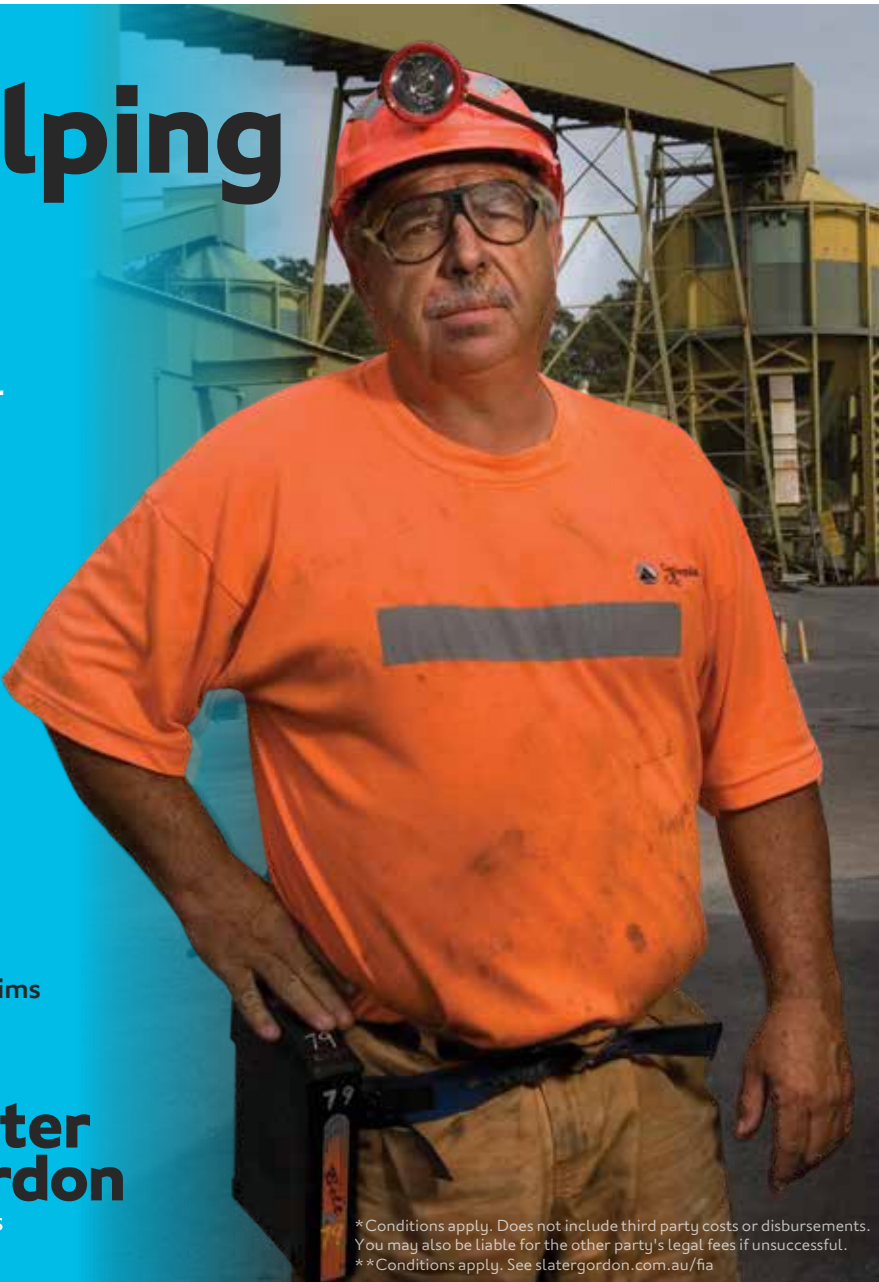
**Stuart Barnett**  
State Practice Group Leader  
Accredited Specialist in Personal Injury Law

As well as specialising in coal mining compensation law, Stuart and his team can help with:

- + Workers' Compensation
- + Road Accident and Public Liability Claims
- + Asbestos and Silicosis Claims
- + Superannuation/TPD claims

GET IN TOUCH  
**1800 991 394**  
slaterguson.com.au/coal

**+ Slater Gordon**  
Lawyers



\*Conditions apply. Does not include third party costs or disbursements. You may also be liable for the other party's legal fees if unsuccessful.  
\*\*Conditions apply. See slaterguson.com.au/fa



# COAL CRUSADER

MICK BUFFIER IS ONE OF THE COAL INDUSTRY'S BIGGEST ADVOCATES SO IT'S NO SURPRISE HE WAS AWARDED THE OUTSTANDING CONTRIBUTION TO NSW MINING AT THE 2019 NSW MINING INDUSTRY & SUPPLIERS AWARDS.



I first heard Mick speak a few years back at a Hunter Business Chamber luncheon where he passionately spoke about the strong global outlook for coal and the importance of making low emission coal a critical part of it. This is a view he is still strongly supporting.

After almost 4 decades in the industry, Mick has risen through the ranks to become one of the most respected advocates for the industry, yet his easygoing and humble nature makes it easy to forget that this is a man with an astounding number of titles to his name.

Mick is Vice-Chairman and immediate past Chairman of the World Coal Association, an associate of the IEA Coal Industry Advisory Board, a former Chairman and a current Director and Deputy Chairman of NSW Minerals Council, a Ministerial appointee to the NSW Coal Innovation Council, Director of ACALET (ACA Low Emission Technologies Ltd), Director of

Australian National Low Emissions Coal (ANLEC) R&D Limited, Director of the CO2CRC and also works with the IEA World Energy Outlook. And I'm sure there's a couple more that even Mick's forgotten!

Along with all these roles, Mick's day job is Glencore's Group Executive for Sustainable Development and Industry Relations across the company's entire global coal operations. This is a position that has allows him even more opportunities to advocate for the industry.

**IT ALL BEGAN FOR MICK BACK IN 1981 WHEN HE STARTED WORK IN THE MINING INDUSTRY AND BEGAN HIS CLIMB. FROM MINING ENGINEER TO SENIOR MINING ENGINEER TO PRODUCTION MANAGER TO MINE MANAGER TO CHIEF OPERATING OFFICER. THIS IS A MAN WHO HAS WORKED HIS WAY TO THE VERY TOP AND MADE INCREDIBLE CONTRIBUTIONS TO THE INDUSTRY ALONG THE WAY.**

Mick's been on the frontline of improving safety performance in the industry and looking back at his career he is most proud of these achievements that helped miners make it home safe. He was a member of the NSW Mine Safety Advisory Council for many years, a tripartite council involving government, industry and the unions that worked constructively to improve mine safety in NSW.

"I've seen so many improvements over the years such as the introduction of risk management and safety management systems which has all led to the NSW coal mining industry being a global leader in safety," Mick says proudly.

"When it comes down to it, all incidents are preventable though it requires hard work and diligence. It also can only happen with the combined effort of everyone in the workplace. One start up mine I had the privilege of managing went 5 years without any lost time injuries.

That was a great achievement however it reflected on the fact that everyone at the site owned safety."

**THROUGHOUT HIS CAREER, LIFTING ENVIRONMENTAL STANDARDS HAS ALSO BEEN FOREMOST, FROM SETTING HIGHER STANDARDS FOR REDUCING DUST AND NOISE TO IMPROVING REHABILITATION. HE REMEMBERS THE 90'S AS A PIVOTAL MOMENT FOR ENVIRONMENTAL MANAGEMENT. COMPANIES BEGAN TO EMPLOY ENVIRONMENTAL MANAGERS AND PRINCIPLES OF SUSTAINABLE DEVELOPMENT WERE COMING TO THE FOREFRONT.**

"I recall feedback from a survey of a community person who said we appreciate the jobs and the economic contribution of mining, but if we have to put up with too much dust and horrible waste dumps, we don't want mining here."

"That's why it's important that we send a clear message that mining companies have to manage the

PETRA NOVA CCUS PROJECT



## LOWER EMISSIONS TECHNOLOGY IS THE FUTURE OF COAL



BOUNDARY DAM PROJECT

environment in a responsible way. We have proven time and time again that mining can successfully co-exist. A great example of that was when Bulga successfully mined under the vineyards at Broke."

Mick says it's all about getting the balance right. Managing impacts combined with economic growth and social improvement.

"There's a lot of negatives around coal but we should not forget that nearly every aspect of our lives comes down to coal. Our buildings, our devices, our cars. We would have none of it without coal."

Coal is an important ingredient in making 80% of the world's cement and 70% of the world's steel and today coal still provides the largest contribution of the world's electricity at 38%.

"One thing I have always loved about the coal industry is being a part of delivering an essential requirement for living and improving the standard of living in a lot of less well-off places around the world. We take our cities for granted. But there's not one city in the world that has been built without cement or steel and this will continue into the future."

Mick explains that while new renewables are increasing, coal is still the most affordable and reliable source of power generation, particularly for the developing nations in Asia.

"Throughout the world there are still 1 billion people who do not have electricity and 2.7 billion (40% of the global population) who do not cook with gas or electricity. Electricity is the foundation block to allow developing nations to lift their standard of living and grow their economy."

**WHILE A LOT OF PEOPLE ARE DISMISSIVE OF THE ROLE OF COAL AND THE FUTURE OF COAL POWER GENERATION MICK SAYS WE CANNOT IGNORE THE FACT THAT COAL IS HERE TO STAY FOR A LONG WHILE YET.**

The simplest way to explain it is to imagine a piece of pie with a big slice of it being coal power. Although the slice of pie that is renewables will grow bigger and the coal slice smaller, the overall

size of the pie will continue to grow much larger. The International Energy Agency forecasts in 2040 coal will generate slightly more electricity than today. That's why Mick says we need to be smarter about the way we produce and use coal.

"If emissions are the problem then let's reduce the emissions. There are low carbon solutions for coal including HELE (higher efficiency, lower emitting) power stations and CCS which we need to invest in. Japan and China are leading in HELE power stations and the Boundary Dam and Petra Nova coal power stations in North America are operating today with CCS. 25 countries included coal as part of the Paris Agreement. These countries rely on coal but have committed to using lower emission technologies."

Mick say that he will continue for a few more years yet advocating for coal and working towards seeing more lower emissions technology implemented here in Australia.

**"THERE ARE LOT OF OPPOSING LOUD VOICES AGAINST COAL, BUT FOR MANY PEOPLE THEY JUST DON'T UNDERSTAND THE FACTS, SO IT'S OUR JOB TO INFORM THEM. IF WE WANT TO ENJOY OUR MODERN SOCIETY, WE HAVE TO HAVE BALANCE AND COAL IS A PART OF THAT."**

## 'AVE A LAUGH WITH



PH 6571 1589

END OF FINANCIAL YEAR SALES  
ON ALL HONDA MOTORCYCLES,  
QUADS AND SIDES BY SIDES

I don't trust stairs. They're always up to something.

**Weldlok®**

For over 60 years, Weldlok® has been the leader in the design, manufacture and supply of compliant products to building and infrastructure projects across Australia

## Our Products

### Steel Grating



### Industrial Handrail Systems



### Civil Drainage



### FRP Grating



### Aluminium Grating & Handrail Systems



117-153 Rookwood Road  
Yagoona NSW 2199  
P: 02 9707 5088  
F: 02 9707 5050  
E: [info@weldlok.com.au](mailto:info@weldlok.com.au)

Visit our website to see the full product range  
[www.weldlok.com.au](http://www.weldlok.com.au)



## A few dollars from your pay will help save lives

Since 1975, the Westpac Rescue Helicopter Service has been there for our community. You can become a supporter of this life saving service which operates 24-7 by becoming a regular donor.

Whether you're at work, travelling or spending time with family or friends, it's reassuring to know the Rescue Helicopter is there for our community.

Joining our Workplace Giving Program is simple and makes a difference.

Contact your Community Liaison Officer on 1800 155 155 or email [enquiries@rescuehelicopter.com.au](mailto:enquiries@rescuehelicopter.com.au)

1800 155 155 | [www.rescuehelicopter.com.au](http://www.rescuehelicopter.com.au)





# Drag AND Drift

THE ANNUAL REV-FEST THAT IS SUMMERNATS ATTRACTS AROUND 120,000 DIE HARD CAR NUTS FROM AROUND THE COUNTRY AND AROUND THE WORLD TO SHOW AND SHINE AND DRAG AND DRIFT. PLACES LIKE EASTERN CREEK DRAGWAY IN SYDNEY ARE VIRTUAL STADIUMS TO BURNING RUBBER AND A SIMILAR FACILITY ON MINE LAND IN THE HUNTER COULD ATTRACT TENS OF THOUSANDS TO EVENTS ACROSS EVERY MONTH OF THE YEAR.



The history of automobiles and motorcycles being used for drag racing is nearly as long as the history of motorized vehicles themselves. It has taken the form of both illegal street racing, and as an organized and regulated motorsport. Its newer cousin drifting is a bit younger, but both attract crowds in huge numbers, numbers that the Hunter could benefit greatly from in the form of tourist dollars.

**DRAG RACING IS A TYPE OF MOTOR RACING IN WHICH AUTOMOBILES OR MOTORCYCLES (USUALLY SPECIALLY PREPARED FOR THE PURPOSE) COMPETE, USUALLY TWO AT A TIME, TO BE FIRST TO CROSS A SET FINISH LINE.**

The race follows a short, straight course from a standing start over a measured distance, most commonly a quarter mile (402 metres) though the new distance of 305 metres is becoming increasingly popular, as it has become the standard for Top Fuel dragsters and funny cars.



**DRIFTING IS A DRIVING TECHNIQUE WHERE THE DRIVER INTENTIONALLY OVERSTEERS, WITH LOSS OF TRACTION IN THE REAR WHEELS OR ALL TIRES, WHILE MAINTAINING CONTROL AND DRIVING THE CAR THROUGH THE ENTIRETY OF A CORNER.**

The technique causes the rear slip angle to exceed the front slip angle to such an extent that often the front wheels are pointing in the opposite direction to the turn. E.g. car is turning left while wheels are pointed right or vice versa.

Both sports complement each other perfectly in terms of set up and don't need anywhere near the kind of investment a full-on racetrack does due to the much shorter tracks and configurations. Spectators are able to get close to all the action and events are proven to attract big numbers.

Mine site buffer land is the perfect location where noise, tyre smoke and



dust simply are not a problem. In the Hunter, well resourced nearby towns could easily service the flood of tourists. It would all work and attract people from far and wide. It's time to burn rubber people!

## THE MEGA MONTHLY MEAT RAFFLE WORTH \$150 COMPLIMENTS OF ROBERT'S MEATS



The Hunters best butcher of hand-picked meaty goodness!

**FOR YOUR CHANCE TO WIN, SIMPLY SMS: ROBERTS MEATS, YOUR NAME AND YOUR EMAIL ADDRESS TO 0438 474 290.**

Limit of one entry per person. LTPM/19/04020

BY SUBMITTING AN ENTRY, YOU CONSENT TO THE USE OF YOUR CONTACT DETAILS FOR PROMOTIONAL AND MARKETING PURPOSES.

# WE ARE HIRING NOW!

## PLANT MECHANICS AUTO ELECTRICIANS

ON SITE:	Completing major shutdowns on excavators, drills & loaders.
OFF SITE:	Completing large scale rebuilds & component changeouts on auxillary machines.



*Fax resume to*  
**MTEC.mechanicalservices@bigpond.com**

## SPECIALISTS IN

Earthmoving & Heavy Equipment Maintenance • Repairs • Shutdowns  
• Machine Rebuilds • Component Changeouts • Both on & off site.

**30 ENTERPRISE CRES, MCDOUGALLS HILL SINGLETON NSW 02 6572 2819**

# An update on Rix's Creek Coal Mine

After nearly six years of keeping the people of Singleton and other stakeholders informed about renewing our consent at Rix's Creek Coal Mine, we finally have some good news.

The NSW Independent Planning Commission (IPC) has granted a short-term consent extension at Rix's Creek South Coal Mine. The decision allows the mine to continue operating until March 2020. This is an interim lifeline, with the sole focus now on securing the mine's long-term future.

Under the Continuation Project consent application, Bloomfield is seeking to continue Rix's Creek Coal Mine operations for another 21 years.

We have worked tirelessly and in good faith to follow an evolving planning process over six years. We support a rigorous and exhaustive process, but the uncertainty and stress that the current system has created for hundreds of employees and their families has been particularly difficult.

As a locally and family owned business that has been part of the Singleton community for 30 years, we are asking for your ongoing understanding and support as we continue working through the approval process. We hope to be in touch with more good news soon.

Warm regards,

**Brett Lewis, CEO, The Bloomfield Group**



## RIX'S CREEK CONTINUATION OF MINING – KEY FACTS

- ▶ The Bloomfield Group commenced operations at Rix's Creek Coal Mine in 1990
- ▶ The continuation was always intended when the mine started 30 years ago
- ▶ The continuation would see current operations progress for about 1.5km in a westward direction away from Singleton, with land being backfilled and remediated as has happened since the mine started
- ▶ We would continue extracting similar volumes on average, with some flexibility to cater for year-to-year market and operational variations
- ▶ It is proposed to be very much business as usual at the site, meaning our neighbours and the surrounding community shouldn't notice any significant changes
- ▶ The Continuation Project relates to the original Rix's Creek Mine site, now referred to as Rix's Creek South. (This does not include the former Integra / Camberwell site which was acquired in 2015, and now forms part of our overall Rix's Creek Mine Complex).

*The Bloomfield Group is a proud and successful mining and engineering group. The only 100 percent locally owned coal miner in the Hunter Valley, Bloomfield has been part of the local community for more than 80 years and employs more than 600 local people. It operates two open-cut coal mines - Rix's Creek Coal Mine northwest of Singleton and Bloomfield Coal Mine east of Maitland.*

**If you have any questions about the Project or require further information please contact:**

Chris Knight, Environmental Manager, on 0403 058 777 or [cknight@bloomcoll.com.au](mailto:cknight@bloomcoll.com.au)

Geoff Moore, Chief Development Officer, on 0407 490 944 or [gmoore@bloomcoll.com.au](mailto:gmoore@bloomcoll.com.au)



**WE CARE. WE DELIVER.**



# Horsing AROUND

THE PIT HORSE STATUE THAT KURRI KURRI LOCALS HAVE BEEN FUNDRAISING TOWARDS FOR SEVERAL YEARS IS DUE FOR COMPLETION AT THE END OF YEAR AND ONCE ERRECTED WILL BE A LASTING MEMORIAL TO THE PIT HORSES THAT WORKED IN THE SOUTH MAITLAND COALFIELDS.



A committee of local people has been hard at work for many years raising funds to have a life-sized bronze statue of a pit horse erected at Rotary Park in Kurri Kurri. Having reached their initial target of \$100,000, they were able to engage well known sculptor Brett Garling to undertake the project. After meeting with Brett, the committee agreed to continue fundraising to enable the inclusion of a bronze skip and wheeler along with the pit horse. The memorial will be a fitting tribute to the pit horses, their handlers and the mining community. **THE COMMITTEE HAS BEEN OVERWHELMED BY THE SUPPORT AND DONATIONS FROM THE LOCAL COMMUNITY AND MINING COMPANIES. RECEIVING A DONATION OF \$50,000 FROM THE CFMEU WAS THE POINT WHERE THE PROJECT BECAME A REALITY.** Fundraising activities are continuing, with the committee continuing with Bunnings BBQs and another Country Music Fundraiser coming up in August. In addition, a set of 5 pewter belt buckles featuring pit horses have recently been donated by Christine Brown to the committee to aid their fundraising.

MAKE A BID FOR THE BELT BUCKLES OR FIND OUT MORE [WWW.VISITKURRIKURRI.COM/PIT-HORSE-PROJECT/](http://WWW.VISITKURRIKURRI.COM/PIT-HORSE-PROJECT/) KURRI KURRI VISITOR CENTRE: 02 4936 1909

## THE STORY OF THE NORTHERN COALFIELD PIT HORSE

THE NORTHERN COALFIELDS HAD HUNDREDS OF HORSES WORKING DOWN THE MINES. CLYDESDALES CROSSED WITH THOROUGHbred MARES PRODUCED THE IDEAL PIT PONY MEASURING IN AT 16 TO 20-HANDS. ONLY MALES WERE SELECTED DUE TO THEIR PULLING POWER, STRONG HIND QUARTERS AND DEEP CHEST.

Pit Ponies started working aged 4 to 5 years. An expert would break them in at a paddock resembling underground workings, teaching them to pull skips and snigg timber. When the breaker was satisfied the horse obeyed voice commands it was given to a wheeler for normal working conditions. Horses which worked in mines with tunnels came out every day after work. They were thoroughly cleaned and checked for injuries, fed at the stables and then allowed to wander freely in a paddock until next morning. At mines with shafts their lives were a little different. Pit horses knew their work better than their handlers. They could count, they knew when it was knock-off time and they knew when it

was Friday afternoon AT RICHMOND MAIN COLLIERY, THE COALFIELDS' 2ND DEEPEST AT 900 FEET, THEY WOULD DESCEND TWO AT A TIME IN A DOUBLE CAGE FOR 40 SECONDS. THEY SOON ADAPTED TO THE MINE'S NOISE, SMELL AND WORKING CONDITIONS. Their work started Sunday 3pm when 100 to 120 would be removed from a grassy paddock to return to the colliery. They were fed, watered, then harnessed by 7am. Soon after, all underground mineworkers arrived by cage 50 at a time. Each wheeler collected his horse. They brought 2 empty skips to 4 miners and collected 2 full skips. Strata pressure affected Richmond Main more than all

other pits on the Coalfields. When coal was removed the floor rose in areas and the ceiling lowered, making hazards for the horse. They became very nervous when the roof started moving and so miners soon relied on the horses for warnings. They are responsible for saving many lives over the years. There were many health and safety regulations because of the essential role horses played. Mines could not operate without them. The horses wore head protectors, were fed the best feed and Vet checked regularly. Special care of their feet was important. They had to keep between skip lines and sometimes it was very dangerous. Two full skips were enough for the horse going downhill. A good wheeler looked after his horse by inserting sprags in the wheels to slow the skips downhill and then removing them for uphill. Poor timing with the sprags would result in serious injury to the horse.

MINERS CONSIDERED THESE GENTLE GIANTS THEIR WORKMATES AND NEVER TOLERATED ANYONE MISTREATING THEM. EACH HAD A DISTINCT PERSONALITY AND THEIR INJURIES AND DEATHS WERE SADLY MOURNED. Each coalmine nominated 4 to 6 horses for the annual race to become the fastest Pit Horse on the South Maitland Coalfield. The Pit Horse Derby, which the media nicknamed "Melbourne Cup of the North" was run at Cessnock from the 1940's. It created tremendous interest and raised much needed funds for the hospitals and charities. Top Sydney jockeys came to Cessnock to ride them. **Thanks to the Kurri Kurri Pit Horse Committee**



OVER 40 USED CARS TO CHOOSE FROM



HILUX U1798  
2013 HILUX SR5 MANUAL  
117000 klms  
**\$31,990**



MUSTANG U1795  
2017 GT MANUAL 5.0V8  
6300klms tickford rims, sports exhaust  
**\$57,990**



FALCON XR8 U1699  
2015 AUTO XR8  
22,000klms, immaculate condition  
**\$46,990**

Singleton  
automotive centre

02 4040 6200

45 JOHN ST,  
SINGLETON



YOUR ONE STOP SHOP FOR  
WHEEL & TYRE SALES & SERVICE FOR  
MINING • INDUSTRIAL • AG  
TRANSPORT • CONSTRUCTION

THE RELATIONSHIP DOESN'T END WITH THE SALE. WITH 10 SITES ACROSS AUSTRALIA AND KNOWLEDGEABLE EXPERTS ON THE ROAD, YOU CAN ALWAYS COUNT ON TITAN TO BE THERE.



As part of the Titan International Group of companies, Titan Australia offers the widest range of tyres & wheels available in Australia. We supply and service wheels and tyres for the industrial, mining, construction, earthmoving, transport, agricultural, recreational and passenger markets. **And with service second to none, Titan Australia can keep your fleet moving.**

**SALES PHONE: 1300 791 672 | [www.titanaustralia.com](http://www.titanaustralia.com)**  
Please send us an email with any enquiries to [sales@titanaustralia.com](mailto:sales@titanaustralia.com)

Muswellbrook, NSW | Sydney, NSW | Yatala, Qld | Emerald, Qld | Mildura, Vic | Perth, WA | Kalgoorlie, WA | Karratha, WA | Port Hedland, WA



# MASSIVE MINING MILESTONE

PETER CONSTABLE HAS JUST CELEBRATED 50 YEARS OF SERVICE AT HUNTER VALLEY OPERATIONS JV.



PETER AND EDDIE CONSTABLE

Peter Constable started at Hunter Valley Operations mine back in 1969 as a fresh faced 20-year-old lad and doesn't plan on retiring any time soon. Five decades of service later and Peter is still loving it.

Peter has been a Dragline Technician and Trainer on the 120-tonne bucket Bucyrus Erie 1570W for the past 44 years. The dedicated professional reflects on his career with fond memories and notes the monumental changes he has seen over his time.

**"THE EQUIPMENT HAS GROWN SO LARGE, FROM A 20-50 TONNE TRUCKS TO A 240 TONNE TRUCK AND STATE OF THE ART TECHNOLOGY WITH MACHINES EQUIPPED WITH GPS SATELLITE," SAID PETER.**

"At the beginning when the mine started there were a dozen trucks and a few loaders, the workforce was about 45, today we move about 105 million tonnes of overburden, the dragline contributing about a third of that."

"I have been through industrial action in the 70's and 80's, seen boom and bust cycles come and go, as well as 29 mine managers and 8 different owners in the past 50 years," he added.

A family man Peter celebrates another milestone this year, his 50th Wedding Anniversary with his wife Lavinia. The couple have 3 children and 5 grandchildren.

**PETER'S SON DAVID HAS FOLLOWED IN HIS FATHER'S FOOTSTEPS, WORKING AT THE SAME MINE AND ON THE SAME CREW, CURRENTLY IN HIS 14TH YEAR.**

"My grandchild Malacjhi was born on the 27th Feb this year and dad and Dave are keen to see him work in the mines in a few years' time (please Glencore)," Peter chuckled.

Peter also mentioned the many opportunities the mining industry offers to those looking to make it their career. "A career in mining for me was always going to be a lifelong career," he said.

"I never contemplated moving from mine to mine like many others, I opted to stay and have racked up a milestone of 50 continuous years as a miner worker at the same mine."

"I am proud of my work ethic, the approach I take to work and in doing so being the best I could be consistently maintaining a high productivity level every day on the job," Peter added.

**HIS FONDEST MEMORY WAS BUILDING THE WALK FROM FOYBROOK TO HOWICK IN 1972 WHICH TOOK 6 MONTHS OF 12-HOUR SHIFTS, 6 DAYS A WEEK TO COMPLETE. AND FOLLOWING THAT, WALKING THE DRAGLINE/SHOVEL AND DRILL TO HOWICK DURING EASTER 1973.**

I think it's clear to say that Peter Constable is a mining legend and someone to look up to in the industry. His advice to those starting their career, "To last as long as I have in 1 job, 1 mine for 50 years has taken discipline, a positive attitude, and a desire to work and they just have to toughen up."

## In need of another tyre supply solution for your equipment?



For equipment using 25" to 49" tyres, we are a recognised supplier of new tyres for mining, earthmoving and quarry industries across Australia.

With reputable brands such as Michelin, Goodyear, BKT and Maxam — we have a large range of stock and sizes to suit:

- Off-highway dump trucks/ water trucks
- Articulated dump trucks
- Wheel Loaders
- Graders
- Both underground and above ground applications



**KaltTireMining.com**  
aus\_sales\_marketing@kaltire.com  
(07) 3503 2722 Brisbane  
0434318249 Dan Richter (Mobile)



AVA STEVENSON - AGE 2

What is Mum good at?  
Feed the bird.  
What is Mum not so good at?  
Tea, sorry.

GWEN PRINGLE - AGE 5



What is Mum good at?  
Mummy is good at singing.  
What is Mum not so good at?  
Mum is not good at making pancakes.



TANNER BROOKS - AGE 2

What is Mum good at?  
Being mum.  
What is Mum not so good at?  
Yummy food.



JAKE PRINGLE  
AGE 8

What is Mum good at?  
Mum is a good cook.  
What is Mum not so good at?  
Mum can't play on the Xbox, she is not a gamer like me.

## Kids @ THE COALFACE

THIS ISSUE WE GAVE OUR KIDS OF THE HUNTER THE CHANCE TO VENT AND TELL US ABOUT MUM'S SKILLS (THE GOOD AND THE NOT SO GOOD). MUM'S, YOU'LL LOVE THIS ONE.



TAHLIA STEVENSON - AGE 5

What is Mum good at?  
Cooking bacon and eggs and putting my scrunchie in.  
What is Mum not so good at?  
Putting the umbrella up.



SEBASTIAN MACKNESS - AGE 4

What is Mum good at?  
Mum is good at holding the baby.  
What is Mum not so good at?  
Not so good at using the phone.



LEWIS SMITH - AGE 10

What is Mum good at?  
Everything except running.  
What is Mum not so good at?  
Running and wearing a Wallabies Jersey (Mum's a Kiwi).

LIAM FRENCH - AGE 12



What is Mum good at?  
Mum is good at being mum.  
What is Mum not so good at?  
Reaching things in high places.



MARLEE STEVENSON - AGE 3

What is Mum good at?  
Cuddles and kisses.  
What is Mum not so good at?  
Driving the truck like dad.

## CLEARING THE PATH FOR AUSTRALIA'S RESOURCE INDUSTRY



**PROFESSIONALS IN SUSTAINABLE LAND CLEARING SOLUTIONS**

SPECIALISING IN :

- MINE SITES
- SOLAR FARMS
- POWER LINES
- PIPE LINES



www.tobiah.com.au PH 0418 654 730 mick@tobiah.com.au



# HAVING A Ball!

THEY MAY HAVE TRADED IN THEIR SOCCER BOOTS FOR WORK BOOTS, BUT FORMER MATILDAS TEAM-MATES - NOW MINING MATES - KATE MCSHEA AND JOEY BURGESS ARE STILL BEHIND "THE GIRLS."

Between their shifts at Glendell Coal Mine, Kate McShea and Joey Burgess have been keenly watching the Matildas' progress through the FIFA Women's World Cup, and despite their recent loss, were still stoked to see them beat old rivals, Brazil.

"Brazil knocked us out of the 2007 World Cup ... it still kind of hurts," laughs Kate. "That rivalry's always going to be there, and this time the girls got up and beat them, so it was good to get a bit of revenge."

Showing that they still support the team all the way, Joey was up to watch that match at 2am. "I took leave so I could watch the game," she says. "I couldn't go to sleep afterwards; I was too excited!"

**WE'RE SITTING IN KATE'S KITCHEN ON A FAIRLY OVERCAST SINGLETON AFTERNOON. FROM THE LIVING ROOM NEXT TO US COME THE CHEERFUL NOISES OF KATE AND PARTNER LISA'S TWO SMALL BOYS AS THEY PLAY. AS I GET THE VOICE-RECORDER SET UP, JOEY, SITTING NEXT TO ME, DRIBBLES A SOCCER BALL CASUALLY FROM FOOT TO FOOT. SO WE BEGIN - NATURALLY - WITH HOW THEY EACH GOT STARTED IN SOCCER.**

Kate's interest in soccer was sparked by her cousin. "Inseparable" as children, she used to watch him play, and decided she'd sign up for a team as well. With her family being from England originally, she jokes that soccer is "in the blood."

Kate worked her way up "through the ranks", playing for the Queensland Academy of Sport for several years, as well as for Brisbane Roar (then Queensland Roar). She was selected to play as defender for the Matildas in 1999.

Like Kate, Joey got involved with team sports during school. "Netball was my main game," she says, "but because the girls at school played soccer, I got into a team, too."

Growing up in Campbelltown, Joey

played for Sydney FC as a mid-fielder. She was selected for the Matildas in 2005, and later relocated to Queensland, where she joined Kate at Brisbane Roar.

**THE TWO INITIALLY MET AS RIVALS, AND JOEY RECALLS THAT - IN TRUE AUSSIE SPIRIT - KATE WAS FOND OF SOME FRIENDLY BANTER. "SHE'D TRY TO GET IN YOUR EAR AND PUT YOU OFF YOUR GAME," SHE LAUGHS.**

Though today's Matildas are professionals, both Joey and Kate had to hold down full-time jobs while they played. "We were working full-time plus trying to train full-time and trying to balance our lives. It was pretty tough back then!"

"You wouldn't change it though, would you?" says Kate. "We had some pretty good times." Joey agrees. "There's nothing like putting on the green and gold," she says.

**"WALKING OUT ONTO A FIELD IN FRONT OF A BIG CROWD IS A FEELING THAT NOTHING CAN EMULATE. IT'S SURREAL. THERE'S NOTHING BETTER THAN WHEN THE CROWD GOES CRAZY WHEN A GOAL GETS SCORED," SAYS KATE. "IT'S A MASSIVE BUZZ," ADDS JOEY.**

But after ten years and 73 caps, Kate decided it was time to move on. "To be honest, it's not like it is these days. We were going to be away more than we'd be at home and it just became a bit too hard."

Chasing a different challenge and encouraged by both the mining boom

and by former team-mates already in the industry, Kate felt it was the right time to apply for a coal-mining job. She was taken on at Glencore's Glendell operation in 2009 and has worked there ever since.

It took a little longer for Joey to reach the same decision. She retired in 2014 after five years with Brisbane Roar, but was "lured back" to play for the Western Sydney Wanderers for a season in 2016.

Despite her love of soccer though, Joey says she's always had her eye on coal mining. "I just wanted to drive big trucks," she says.

Initially, she got her Heavy-Rigid licence because her older brother didn't think she'd be able to drive trucks at all. Her response? "I said 'Yeah? I'll show you!' It gave me that fire to go and do my licence!"

Not only did Joey get her licence, she got a job

driving trucks for TNT in Sydney, delivering diesel and truck tyres. Having showed her brother up in a big way, she put in her application for a trucking traineeship through Glendell and started work there in 2017.

Although she's a relative newcomer to the industry, joking that she's a "freshman," Joey is keen to take on any training the company offer in the future. She's been trained to operate Glendell's Caterpillar 793 and 789 trucks and has recently qualified on the 16M grader.

You'd think she'd be used to the equipment by now, but Joey admits

she still gets a kick out of driving the trucks. "I'm still like oh my God, I love driving these," she says. "I love it when I'm on a truck - I'm like 'yes!'" she laughs.

In addition to her truck skill, Kate is one of only two women trained to operate Hitachi EX2500 excavators at Glendell, and only one of a handful who operate the 854K Wheel Dozer.

**SHE FEELS THAT THE SITE (AND THE INDUSTRY IN GENERAL) HAS BEEN ENCOURAGING TO ITS FEMALE WORKERS. "OUT THERE IT'S BEEN GOOD. YOU NEVER FELT LIKE YOU COULDN'T DO SOMETHING. IF YOU ASPIRED TO BE ON A DIGGER, THEY WERE PRETTY SUPPORTIVE AND WOULD HELP YOU GET ON WHATEVER YOU WANTED TO GET ON."**

Kate and Joey both think there are parallels between sporting and mines. "Mining, like sports, it's team-based. You look out for one another," says Kate.

Both women believe athletes make good miners - in fact, Kate believes the mining industry could benefit by collaborating with sporting bodies.

"When you think about it, athletes are all fit, healthy people who are all pretty dedicated. You also tend to be pretty particular and set high standards for yourself. You take pride in your work. You're used to self-discipline and long hours."

**KATE AND JOEY ARE GRATIFIED TO SEE HOW MUCH MORE PUBLIC INTEREST AND SUPPORT THERE IS FOR THE MATILDAS AND FOR WOMEN'S SPORT IN GENERAL THESE DAYS.**

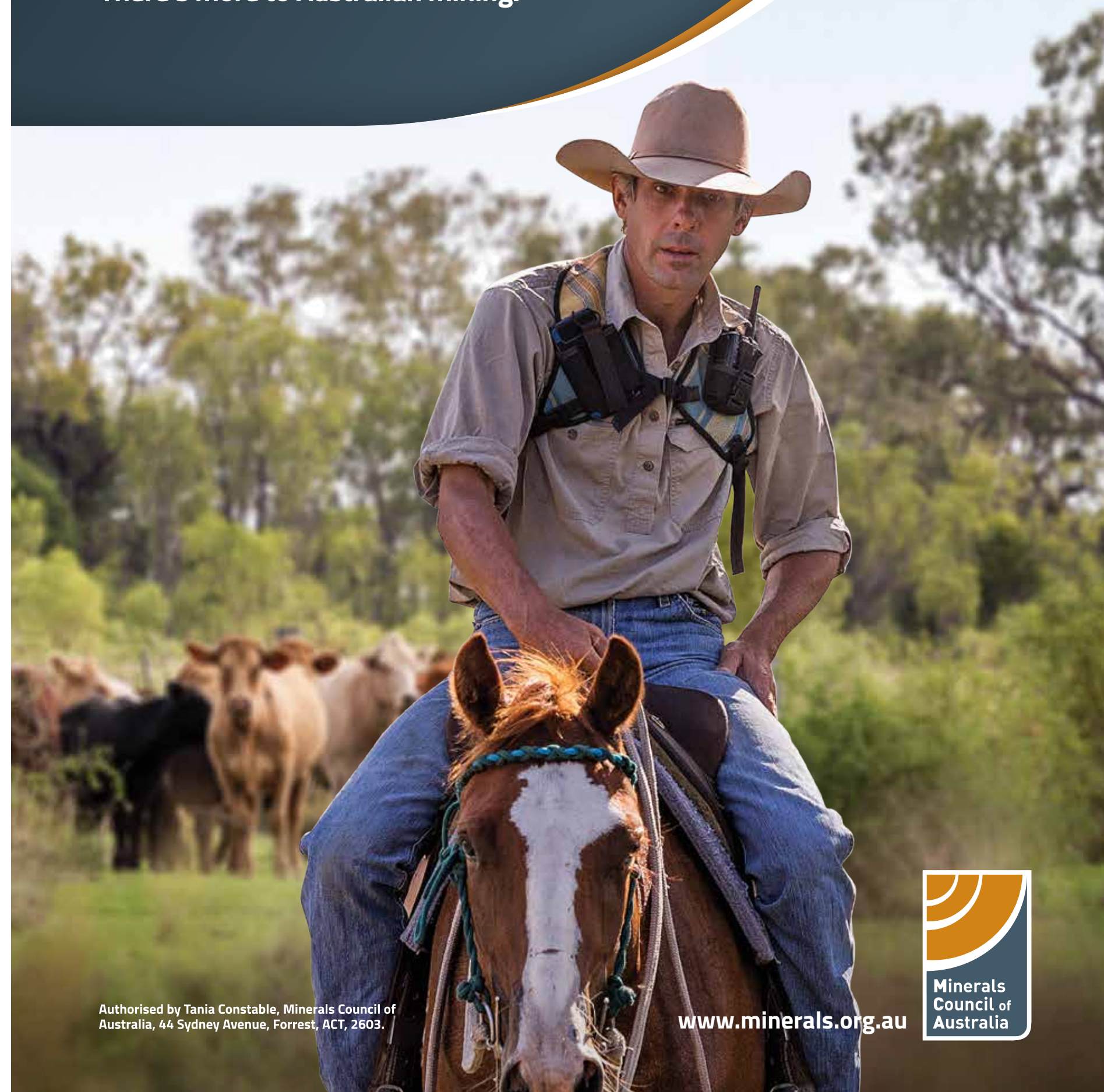
"You see little girls wearing Sam Kerr or Lisa De Vanna jerseys, which is pretty cool. They don't just have Socceroos jerseys on; they've actually got Matildas jerseys," says Kate.

"It seems like the face of female sport is getting out there more, which is great," she continues. "We hope we played a small part in that."

# "You'd never know all this used to be a mine."

Australian miners and farmers are working together towards a common goal. Mining land is being rehabilitated to graze cattle and grow crops. When the mining is gone, the rehabilitated land will be here to stay - preserving it for future generations.

**There's more to Australian mining.**



Authorised by Tania Constable, Minerals Council of Australia, 44 Sydney Avenue, Forrest, ACT, 2603.

[www.minerals.org.au](http://www.minerals.org.au)







## SUPPLIER INSIDER

# MRS SERVICES GROUP

### Who are you and what do you do?

I am Paul Brenton, the Chief Executive Officer for MRS Services Group, a diverse service support company for the mining and civil construction industries. MRS are a One Stop Shop with four main service arms consisting of Mechanical, Fabrication, Automotive and Civil & Construction.

### Where did you start and how did you end up where you are now?

I started at MRS Services Group in February 2017 as CFO to assist in the restructure of the group. Then in August 2017 I was appointed CEO.

### Describe a typical day at 'The office'.

No such thing as a typical day. It usually starts at 6am and finishes when it finishes with a lot of coffee in between. I spend most of time on the phone assisting employees and customers and travelling between our Muswellbrook, Newcastle and Ipswich locations.

### What's the best thing about your business?

Our people, all highly skilled and motivated, producing quality work.

### What is the big news in your part of the mining industry right now?

With the business expanding we can't hire enough new people at the moment. We are always looking for motivated staff.

### What is the biggest opportunity for your business right now?

Expanding our civil and drone services.

### What are the biggest challenges facing your business?

Finding new good people. To help with this we are investing time and resources in engaging new apprentices and trainees to ensure our company (and industry) will remain strong going forward.

### How long have you been doing business and business in the Valley?

My mother's family is from Aberdeen so I grew up in the Valley. My first job after leaving school 1996 had me working in the Hunter Valley six months of the year and I've pretty much have been based in the Hunter Valley ever since.

### Community or other causes close to its heart and values?

MRS Services Group and I are passionate about supporting local community and junior sports and getting kids outside playing. We sponsor a number of junior sporting teams including Hamilton Hawks Junior Rugby Union, Muswellbrook and District Junior Rams Rugby League, Muswellbrook Football Club and Hunter Valley Group 21 Referees Association. We also sponsor a vehicle in the Variety Club children's charity bash along with Cystic Fibrosis Community Care and charity golf days for the Muswellbrook Race Club and Football Club.

### How big is the crew in the Hunter Valley?

Our crew cover from Gunnedah to Sydney with almost 300 talented people supporting our customers. What's the best thing about your job? The 300 plus people and the variety, no two days are the same.

### The worst thing?

The drive from Newcastle to Muswellbrook.

### What's a funny story about work that you can tell?

When people at work realise that my Dad taught them at Muswellbrook High School back in the 70's.

### Anything else you want to say?

I am really proud to be a part of the MRS Group, particularly with what we've achieved in the past 2 years, including purchasing the big shed on TMD and completing the outstanding works. This has provided employees a safe and happy environment. We are also investing in the local community, engaging 24 apprentices and trainees over the past 2 years and it's so rewarding seeing the young crew progress.



SMILES FROM THE START

## LUKE MORRISON

MORRO LOVES A FRIDAY KNOCK OFF, BUT LOVES THE JOB EVEN MORE!

TO END OF SHIFT.

### Who are you and what do you do?

I'm Luke Morrison and I'm lucky enough to be a part of a company called Cleanaway.

### Any nicknames good or bad?

Have always had Morro/Morrison since school.

### Where do you live and how long have you been in the Hunter Valley?

I'm lucky enough to live with my beautiful girlfriend and her mum in Farley.

### When did you start and what's the ride been like?

I started 12 months ago. And it's been unreal.

The opportunities are endless if you do the right thing and have respect for everybody and look out for yourself and your work mates. We all go to work to earn money but we all go planning on returning home safely. Safety comes first every time. If it's not safe, I won't do the job or let anybody on my team or around me conduct the job.

### What's a usual day at work entail?

In the mines we do a lot of industrial cleans on draglines, sumps cleans throughout CHPP buildings and surroundings. Heavy

and light vehicle wash bays, cleans of dams doing liquid transfers and even cleans of dams removing all coal slurry from the base of dams to help give CHPP cleaner water to help clean the coal before sending it to the buyer.

### How big is the crew?

Our crew is normally 2-man jobs but there are 5-6 blokes inducted at each site.

### What's the best thing about your job?

Friday knock off.

### The worst thing?

Getting dirty and messing my hair up.

## 'AVE A LAUGH WITH

**BrookOutdoors**  
sales - service - spares - hire  
PH 6545 1066

NOW STOCKING FULL RANGE OF BUSHRANGER POWER EQUIPMENT:  
CHAINSAWS, BRUSHCUTTERS, BLOWERS AND MOWERS

A German Shepherd, Doberman Pinscher and Australian Cattle Dog have died. All three are faced with God who wants to know what they believe in.

The German Shepherd says, "I believe in discipline, training and loyalty to my master."

"Good," says God. "Then you shall sit by my right side."

The Doberman says, "I believe in love, care and protection of my master."

"Aha," says God. "You shall sit by my left side."

He looks at the Australian Cattle Dog and asks, "What do you believe?"

The Cattle Dog answers, "I believe you are sitting in my seat."

1300 4 SPARES  
sales@expressway.com.au  
www.expressway.com.au

**Expressway Spares**  
PTY. LTD.

PARTS & EQUIPMENT  
SUITABLE FOR  
CATERPILLAR  
& HITACHI

SUPPLIERS OF NEW,  
USED AND RECONDITIONED  
PARTS & COMPONENTS

We currently have over 300 experienced staff that are committed to keeping your machines working to minimise downtime with the supply of quality parts and service.

WAUCHOPE 02 6585 1000 | HUNTER VALLEY 02 6574 6499 | MACKAY 07 4955 0220 | PERTH 08 9477 1355 | GUNNEDAH 02 6741 4777

**Australian Remanufacturing** P/L  
37 KYLE STREET RUTHERFORD 2320

**CAT MACHINE REBUILDS**

**DOZERS**

**HAUL TRUCKS**

**CAT COMPONENT REBUILDS**

Terry 0417 200 226 • terry@ausreman.com.au

**ausreman.com.au**



# Programmed TAKES THE Prize

FOUR OUT OF EIGHT PROGRAMMED APPRENTICES AND TRAINEES HAVE TAKEN HOME AWARDS AT THE 2019 HUNTER REGION APPRENTICESHIP AND TRAINEESHIPS AWARDS, INCLUDING A STELLAR WIN FOR MADDISON CLARKE WHO TOOK THE TOP PRIZE IN THE 'FEMALE IN NON-TRADITIONAL TRADES' CATEGORY.

## Congratulations

TO THE OTHER  
PROGRAMMED FINALISTS:  
BENJAMIN RILEY  
BRADLEY KIRKWOOD  
PETER WISEMAN  
AND MATTHEW STAMMER

It was a night of celebration for Programmed Training Services, a national GTO and RTO provider who has supported the Hunter Region with apprenticeships, traineeships and training delivery for over 15 years.

'Female in non-traditional trade' winner Maddison Clarke completed her Heavy Plant Mechanical apprenticeship with Programmed earlier this year at Yancoal's Mount Thorley Warkworth site. Maddison is now a fully qualified tradesperson, working with a local NSW mining maintenance company based out of Four Mile and Rix's Creek mines.

**"WHEN I FIRST FOUND OUT THAT I WAS NOMINATED FOR TRAINEE OF THE YEAR FOR SURFACE EXTRACTION OPERATIONS, I WAS TRULY HUMBLLED TO BE GIVEN THE OPPORTUNITY TO BE RECOGNIZED AND TO REPRESENT PROGRAMMED AS ONE OF THEIR VALUED TRAINEES. TO TAKE OUT THE TRAINEE OF THE YEAR AWARD, IT HAS TRULY BEEN A REWARDING EXPERIENCE."**

Programmed Training Services East Manager Connie Scardamaglia is extremely proud of the Programmed winners and finalists. "The Hunter Region Apprenticeship and Traineeships Awards are a fantastic opportunity to celebrate the achievements of all people building their skills and starting new career pathways in the region. I am thrilled that our people have been recognised for all their hard work and dedication," Connie said.

Programmed have been supporting Australian industries to fill skills gaps and provide employment opportunities to individuals looking to become qualified in their chosen trade. They also design and deliver training services for their customers, including delivery and assessment of Certificate II and III qualifications in Mining.

'AVE A LAUGH WITH

SingletonOutdoors

sales - service - spares

PH 6571 1589

END OF FINANCIAL YEAR SALES ON ALL HONDA MOTORCYCLES, QUADS AND SIDES BY SIDES

mrs

SERVICES GROUP

MANAGEMENT RESOURCE SOLUTIONS

PH +61 (2) 6540 9400

mrssg.net info@mrssg.net

39-43 Thomas Mitchell Drive

Muswellbrook NSW 2333 Australia

Civil & Earth Works

MINE REHABILITATION PROJECT TEAM

CONVEYOR AND MATERIAL HANDLING CLEAN-UP SUPPORT

POLY PIPE SUPPLY AND INSTALL

INFRASTRUCTURE AND GENERAL MAINTENANCE INCLUDING LANDSCAPING

TRAFFIC CONTROL SOLUTIONS (RMS APPOINTED TRAFFIC CONTROLLERS)

CIVIL WORKS AND PROJECTS

ROAD AND CONSTRUCTION MAINTENANCE

FLOAT HIRE

MOBILE INDUSTRIAL PRESSURE CLEANING

MOBILE INDUSTRIAL BLAST AND PAINTING

2019 NSW Training Awards

Hunter Region

NSW

DANE CASTLES – TELECOMMUNICATIONS

2019 NSW Training Awards

Hunter Region

NSW

WILLIAM HAMMOND – ENGINEERING MECHANICAL

2019 NSW Training Awards

Hunter Region

NSW

RUSSELL PAPLAUSKAS – SURFACE EXTRACTIONS OPERATIONS - MINING

2019 NSW Training Awards

Hunter Region

NSW

MADDISON CLARKE – AUTOMOTIVE PLANT MECHANIC AND FEMALE IN NON-TRADITIONAL TRADE

# LIDDELL LEARNERS

SINGLETON HIGH'S HUNTERWISE STUDENTS GET UP CLOSE AND PERSONAL AT LIDDELL OPEN CUT MINE.

There's nothing like hands on practical experience to inspire students and you don't get much more hands on then visiting an operating coal mine.

16 Singleton High School Year 8 students, teachers and HunterWiSE mentors got that opportunity recently when Glencore's Liddell Open Cut site hosted a visit.

The students are part of the Girls in STEM initiative through the University of Newcastle's HunterWiSE program. HunterWiSE is an initiative that establishes mentorship avenues for women in STEM throughout the Hunter region promoting positive collaboration and sharing of experiences aimed at increasing the number of girls and women participating in STEM.

**AS A PARTNER OF HUNTERWISE'S PROGRAM, GLENCORE GENEROUSLY DONATED \$15,000 TO SINGLETON**

# COMMUNITY GIFT

THIS MONTH THE COMPLETE PARTS AND @ THE COALFACE \$500 COMMUNITY GIFT GOES TO THE UPPER HUNTER COMMUNITY SERVICES TOY BOX PROGRAM.

## TIME FOR TOYS!

Toy Box is a travelling play service for 0 to 6 years olds. During the school Term the Toy Box Truck will visit various rural communities throughout the Upper Hunter.

From getting creative with arts & crafts, learning new songs and dances, to trying out dress ups and role playing, Toy Box is about educational and fun based activities that will keep kids busy and entertained. It's never too late to join in the fun as all are welcome to attend.

You can even attend every venue if you can't get enough! Term 3 runs Mondays through Thursdays from July 22 to September 26 from 9.30am to 12pm visiting McCullys Gap, Sandy Hollow, Jerrys Plains, Wybong, Moonan, Settlement, Hebdon, Gundy, Bunnan, Ellerston, Martindale, Cassillis, Wingen.

PHONE: 0265434877 • EMAIL: TOYBOX@UHCS.ORG.AU  
@UHCSINC • WEBSITE: WWW.UHCS.ORG.AU

**HIGH TO PARTICIPATE IN THE OUTREACH PROGRAM WHICH INCLUDES MENTORING FROM HUNTERWISE MENTORS AND MINE SITE VISITS.**

During their visit the girls enjoyed exploring the CHPP where they were introduced to the chemistry of coal handling, experiencing up close the size and scale of mining equipment in the heavy mechanical workshops and visiting rehabilitation areas where they learnt about spoil, topsoil placement, planting methods and ground shaping, through to final landform and grazing use.

They also drove into the pit to the inspection lookout to witness and discuss the pit floor workings and geology and throughout the whole day

received interesting presentations and informative talks from a range of Liddell's female mining professionals.

**"THE SITE VISIT WAS A FUN AND INTERACTIVE WAY FOR THE GIRLS TO EXPERIENCE COAL MINING. THEY WERE SHOWN AROUND BY LIDDELL'S MANY FEMALE MINING PROFESSIONALS, WHO SHARED THEIR PERSONAL STORIES AND ENCOURAGEMENT WITH THE STUDENTS," SAID GLENCORE REPRESENTATIVE, TRACEY SNEDDEN.**

"The girls were all beautifully behaved and attentive throughout the entire day, a real credit to Singleton High School and we are proud to be part of such a worthy program that is encouraging more young women to consider a STEM career."

Mining Vehicles Australia

www.miningvehicles.com.au

1300 250 047

FROM MINE SPEC BUILDS TO GENERAL SERVICING, WE ARE THE ONE STOP SHOP

✓ Mine spec builds

✓ 'Side Entry' Landcruiser Troopys

✓ Fire suppression systems

✓ General vehicle servicing

✓ Truck single wheel conversion

✓ Mine bus builds

30 @ THE COALFACE | JULY-AUGUST 2019

@ THE COALFACE | JULY-AUGUST 2019 31





## GO FOR BROKE

THE BROKE VILLAGE FAIR IS BACK AGAIN ON SUNDAY SEPTEMBER 8 AT MCNAMARA PARK AND IS A GUARANTEED DAY OF FUN AND ENTERTAINMENT FOR THE WHOLE FAMILY.

The 2019 Broke Village Fair has it all. Whip cracking, live music, bush poetry, rocker car racing, magic, mine tours and so much more making it a day you don't want to miss.

The Vintage Car Display showcases hundreds of vintage and classic cars, motorbikes, trucks and tractors and an amazing array of vintage farm machinery and is sure to be a favourite for motor enthusiasts.

There's plenty to keep the kids entertained with jumping castles, face painting, rides and even animal displays with miniature horses, calves, camels, and chickens.

### THE FAIR LINE-UP

WHIPCRACKING WITH ANDREW THOMAS	9.30AM & 1PM
ROCKER COVER CAR RACING	1.30PM
JD'S WORLD OF MAGIC	10AM - 12PM
MINE TOURS TO BULGA OPEN CUT	10AM, 11.30AM AND 1.30PM
BUSH POETRY	12PM
VINTAGE AND CLASSIC CAR DISPLAY	ALL DAY
VINTAGE FARM MACHINERY DISPLAY	ALL DAY
CENTRE STAGE MUSIC & DEMONSTRATIONS	ALL DAY
ENTRY:	GOLD COIN DONATION



BROWSE THROUGH MORE THAN 60 MARKET STALLS, TRY SOME WINE AND OLIVE TASTING AND THEN RECHARGE WITH SOME TASTY FOOD TRUCK TUCKER WHILE YOU ENJOY THE MUSIC AND DEMONSTRATIONS ON THE CENTRE STAGE THROUGHOUT THE DAY.

Don't miss out on the free mine tours to Bulga Open Cut which operate between 10am and 1.30pm. The whole family can go behind the scenes of a top class working mine where you'll learn about the whole mining process and see mine equipment at work.

Ralph Northey, Bulga Coal Environment and Community Manager said that Bulga Coal have been proud supporters of the Fair for around 30 years.

"The Broke Fair brings over 5,000 happy people to our village every year and Bulga Coal is happy to be able to participate and support. Pop in and say hi at the Bulga Coal marquee at the Fair or join us on a mine tour," Ralph said.



## BRAIN GAMES

YANCOAL AUSTRALIA INVESTS IN OUR FUTURE WITH THE UPPER HUNTER SCIENCE AND ENGINEERING CHALLENGE (UHSEC).

The Science and Engineering Challenge was held over three exciting days at Muswellbrook Indoor Sports Centre thanks to Yancoal, The University of Newcastle and the local Rotary Club.

Hundreds of students were entertained and educated as they participated in the not-for-profit Science and Engineering Challenge program which is aimed at stimulating interest in STEM fields by exploring scientific concepts with practical problem solving.

The first day of the program saw teams from local high schools collaborate to solve real-world challenges such as building an earthquake resilient tower, linking efficient networks for high-speed rail and sending encrypted messages with light.

The next two days was for the young guns, with primary school students

working on activities such as building a bridge and designing a suspension system for a mars rover.

SCONE GRAMMAR WAS PROCLAIMED THE WINNER OF THE CHALLENGE, BUT EVERY SCHOOL SHOULD BE CONGRATULATED ON THEIR EFFORTS.

The program was first launched in 2000 to deliver a unique and accessible program in every Australian State and Territory and in 2018 the program was nationally recognised when it won the BHERT award for Award for Outstanding Collaboration in Community Engagement.

Thanks to Yancoal's Mount Thorley Warkworth mine this worthy program has been offered to students in the Upper Hunter for many years and recently they committed to a further two years ensuring it will continue through to the end of 2021.

Mount Thorley Warkworth General Manager Jason McCallum said they recognised the positive impact the challenge has on local students.

"WE ARE PROUD TO SUPPORT A PROGRAM THAT HELPS INSPIRE STUDENTS TO CONSIDER A FUTURE CAREER IN SCIENCE AND ENGINEERING. IT IS INITIATIVES LIKE THIS THAT HELP EDUCATE AND DRIVE THE NEXT GENERATION OF LEADERS INTO OUR INDUSTRY," SAID JASON.

BELOW: SCONE GRAMMAR SCHOOL STUDENTS ENJOYING A DAY OF SCIENCE AND ENGINEERING CHALLENGES.



### 'AVE A LAUGH WITH

**SconeOutdoors**  
sales • service • spares • hire  
PH 6545 3033

END OF FINANCIAL YEAR SALES ON ALL HONDA MOTORCYCLES, QUADS AND SIDES BY SIDES

I was sitting on a bus behind a mother and her young son  
The boy kept looking around and pulling funny faces at me.  
After a few minutes I got tired of his

antics so I said, "When I was young, my mother told me that if I made a ugly face and the wind changed, I'd stay that way."  
The little boy replied, "Well, you can't say you weren't warned."

## BIRD FREE FERAL PIGEON REPELLENT

*The new era in bird control*

### MULTI-SENSORY BIRD REPELLENT

- **Sight** – Birds see fire due to UV reflection
- **Smell** – Birds smell peppermint oil, which they hate
- **Touch** – Sticky if they do touch it

### PRE-LOADED DISHES

- **Easy** to install
- **Won't** run and can be mounted upside down
- **Resistant** to all weather
- **2-4 year** lifespan

BIRD FREE HAS BEEN SUCCESSFULLY TRIALLED ON 4 MINE SITES IN AUSTRALIA  
IT'S ECO FRIENDLY, HARMLESS, DISCREET AND EFFECTIVE  
For more information visit [www.birdfree.com.au](http://www.birdfree.com.au) or call 1300 023 733



What you see

The ultraviolet light spectrum appears to birds as fire.

What birds see

## FANTASTIC FORDS!



DEMO EVEREST TREND  
4WD 7 SEATER  
with towbar

**\$54,990**

N1796

DEMO XLT RANGER AUTO  
with Techpack

**\$48,990**

N1760



Singleton  
automotive centre

02 4040 6200  
45 JOHN ST, SINGLETON



[ford.com.au](http://ford.com.au)

MTW REPRESENTATIVES EXCITED TO BE PART OF THE SCIENCE AND ENGINEERING CHALLENGE.

## Automotive & Glass

- REGO INSPECTION STATION (PINK SLIP) FOR LIGHT AND HEAVY VEHICLES
- LIGHT VEHICLE LOG BOOK SERVICING AND REPAIRS
- HEAVY VEHICLE SERVICING AND REPAIRS
- TRAILER SERVICING AND REPAIRS
- WELDER AND GENERATOR SERVICING AND REPAIRS
- FULL BRAKE SERVICING AND REPAIRS
- AIR CONDITIONING RE-GASSING AND REPAIRS
- LIGHT AND HEAVY VEHICLE AUTO ELECTRICAL SERVICES
- TYRE SALES, FITTING AND BALANCING – KUMHO TYRES
- DURASHOCK SMART GVM UPGRADES, 4WD LIFT KITS
- VEHICLE FIT OUTS AND MINE COMPLIANCE WORKS
- WINDSCREENS AND CAR BODY GLASS ALL MAKES AND MODELS CARS, 4WD'S, UTES AND TRUCKS
- MINING EQUIPMENT DOZERS, SHOVELS, DUMP TRUCK, SCRAPERS, EXCAVATORS AND MUCH MORE
- HOME, SHOP AND OFFICE GLAZING
- AGRICULTURAL MACHINERY



PH +61 (2) 6540 9400  
[mrssg.net](http://mrssg.net) info@mrssg.net  
39-43 Thomas Mitchell Drive  
Muswellbrook NSW 2333 Australia



# Coal Services Protecting industry



Our purpose: To protect

Our vision: To partner with industry for a safe workplace and a healthy workforce

NSW Mines Rescue  
CS Health  
Coal Mines Technical Services  
Coal Mines Insurance

Visit our website to learn more about how we protect industry

[www.coalservices.com.au](http://www.coalservices.com.au)



## Eating Right on Shift Work

YOU'VE HIT YOUR THIRD OR FOURTH NIGHTSHIFT AND ENERGY LEVELS ARE LOW. YOU'VE BEEN RELYING ON LOLLIES, COFFEE OR ENERGY DRINKS THROUGHOUT THE NIGHT TO KEEP YOU AWAKE. DAYSHIFT ROLLS AROUND AND YOU WERE TOO TIRED TO GET UP EARLY AND HAVE BREAKFAST, SO YOU STOP INTO THE SERVO ON THE WAY FOR A QUICK BACON AND EGG ROLL WITH A DARE ICED COFFEE TO GO. ANYTHING SOUND FAMILIAR?

This cycle of eating can lead to lower energy levels, poor immune system and weight gain. The constant sugar hits and processed foods can start to take its toll on your blood sugar levels and cholesterol, not to mention your waistline. So, what's the answer and how do you break that cycle?



SALLY MACKLINSHAW

ACCREDITED PRACTISING DIETITIAN FROM BITE INTO LIFE NUTRITION AT SINGLETON PHYSIOTHERAPY & ALLIED HEALTH.



### BUILD SUSTAINABLE NEW HABITS, DON'T GO ON A DIET

Start with just one new habit, for example eating a healthy breakfast each day. Try and keep it simple and achievable, don't overcomplicate it or aim for perfection as this can just lead to giving up. Other new habits could be to take healthy snacks such as fruit, yoghurt, nuts and wholegrain crackers, rather than raiding the vending machine each day.

### TRY TO REDUCE ADDED SUGARS AND SATURATED FATS

Sugary drinks are just empty calories that provide little more than a brief energy burst, but are generally followed by a slump, leaving you looking for your next sugar hit. Saturated fats found in biscuits, cake, butter, chips, pastries, chocolate and processed meats are linked to high cholesterol levels, are high in calories and contain little nutrition.

### DO SOME MEAL PREP

Spending some time on your day off to cook a batch of meals or cooking extra for dinner can help take the pressure off the busy long workdays. Stir-fries, stews, baked dinners and veggie-packed curries all freeze well and can be super quick and easy to take for lunches.

### CHOOSE HIGH-PROTEIN SNACKS FOR NIGHTSHIFT

Snacks high in protein help keep you alert and energised for longer. Try things like unsalted nuts (just a handful), Greek yoghurt, tins of tuna or salmon, boiled eggs, wholegrain crackers with cheese or small tins of baked beans.

### MIND YOUR PORTIONS

If you're watching your weight, a good rule of thumb is the "quarter, quarter, half" rule. A quarter of the plate for a lean protein, like fish, eggs, chicken or beef, a quarter of the plate for a carbohydrate like sweet potato, brown rice or pasta, and half the plate for the other colourful salad or veggies. This keeps your calories down, provides plenty of fibre for fullness and helps you get your 5 serves of veg a day for good health.

# A FLAIR FOR HAIR

THE TEAM AT EXACT HAIR CO. SINGLETON KNOW EXACTLY WHAT YOU NEED TO MAKE YOU LOOK YOUR BEST.

They are giving away a \$50 voucher to spend in the salon on any product or service.

FOR YOUR CHANCE TO WIN, SIMPLY SMS: EXACT HAIR CO, YOUR NAME, AND YOUR EMAIL ADDRESS TO 0438 474 290.

PH: 02 6572 2089  
@EXACT-HAIR-CO  
2/108 JOHN ST, SINGLETON

Limit of one entry per person. LTPM/19/04020  
BY SUBMITTING AN ENTRY, YOU CONSENT TO THE USE OF YOUR CONTACT DETAILS FOR PROMOTIONAL AND MARKETING PURPOSES.

# WAMBO WEDGETAILS WIN

PEABODY'S WAMBO WEDGETAILS HAVE TAKEN OUT THE 2019 HUNTER VALLEY UNDERGROUND MINES RESCUE COMPETITION WITH YANCOAL'S ASHTON TEAM THE RUNNERS UP.

Wambo's victory was achieved under the exceptional captaincy debut of Kurt Bereza who also took out the coveted Wayne Wallace Shield for Best Captain. The team, which included two newcomers to mines rescue, demonstrated great competency and depth of skills with Kurt leading the team following the departure of mines rescue stalwart Warren Kirk who relocated to the southern coal mining region last year.

On accepting the winning shield Kurt said, "I would like to start by thanking our team. This win is attributed to everyone's efforts, teamwork, skills, competency and commitment to the tasks that were thrown at us. It is also a celebration of the investment that Peabody and Wambo management have put into our training, skill development and mentoring along the way."

"I would also like to sincerely thank Albert Scheepers our General Manager and Dave Gibson our Mine Manager

for the continual support, as well as allowing two Wambo teams to compete," he said. "The team at Hunter Valley Mines Rescue is also to be commended on their efforts for once again pulling together an exceptional event that each year continues to test our skills and competency."

OTHER AWARDS PRESENTED FOLLOWING THE DAYS' COMPETITION INCLUDED THE HIGHLY-CONTESTED FIRST AID AWARD THAT WAS WON BY WHITEHAVEN'S NARRABRI TEAM. DAVE MALONE, CAPTAIN OF WAMBO'S SECOND TEAM, THE WAMBO WOMBATS, WAS GIVEN THE HONOUR OF RECEIVING THE BEST THEORY AWARD FOR A SECOND YEAR IN A ROW.

Mines Rescue Regional Manager, David Connell, said the Hunter Valley Mines Rescue competition was an ideal opportunity for brigadesmen to come together and demonstrate their safety expertise. Now in its 36th year, the annual event tests the incident



response and rescue skills of active mines rescue brigadesmen.

"It is critical that we acknowledge the dedication and commitment of our competing brigadesmen and my team in designing such a challenging competition format. We must also acknowledge that days like today would not be possible without the assistance of mining companies

like Glencore who have kindly given permission for Ravensworth Underground Mine, which is on care and maintenance, to host the event. I would like to sincerely thank Mark Munro, Ravensworth Underground's Mining Engineer Manager and his team for their commitment and support in making this year's event so successful," Mr Connell said.

BOTH OF THESE COMPETITIONS ARE PART OF A SERIES OF REGIONAL COMPETITIONS HOSTED BY NSW MINES RESCUE. COMPETITIONS WILL ALSO TAKE PLACE WOLLONGONG AND MUDGEE WITH THE WINNING TEAMS FROM EACH REGION INVITED TO COMPETE IN THE AUSTRALIAN COMPETITION TO BE HELD LATER IN THE YEAR.



BRIGADESMEN FROM ACROSS THE REGION SHOWCASED THEIR SKILLS AT THE ANNUAL NEWCASTLE MINES RESCUE COMPETITION WITH TEAM ORANGE DECLARED OVERALL WINNERS.

Yancoal's Abel Mine was host to the event which saw teams competing in a full day of underground and surface simulations that were designed to test their emergency response skills.

Team Orange Captain John Downie reflected on his short but eventful time as a brigadesman and thanked his team for their efforts throughout the day.

"I've only been a brigadesman for three years. My brother passed away three years ago, and I joined mines rescue to keep a promise I had made to him. We were going to do the training together. After I finished the initial training I pretty much went straight into the regional competition. I was on Darrell Squires' winning team and so we went to the Australian comp after that."

THE PRIMARY PURPOSE OF MINES RESCUE IS TO PROVIDE EMERGENCY RESPONSE TO THE NSW COAL MINING INDUSTRY IN THE CASE OF AN EMERGENCY. EVENTS LIKE THESE ALLOW BRIGADESMEN TO PRACTICE AND HONE THEIR SKILLS IN PREPARATION FOR THE UNFORTUNATE CIRCUMSTANCE WHERE THEY MAY BE CALLED UPON.



"The Newcastle competition simulates what would happen if a real incident or emergency occurred at a mine site," explained Peter Cornford, Regional Manager. "Teams are formed as they arrive at the designated site. These guys aren't training together on a regular basis, so it's as much about their ability to communicate and work together as a team as much as it a test of skill."

Mr Cornford said that the competition enables new trainees to work with and learn from more experienced brigadesmen.

"SOME OF THE GUYS COMPETING HERE TODAY HAVE 25 YEARS' EXPERIENCE OR MORE. THEY, AND ALL OUR VOLUNTEER BRIGADESMEN, PLAY AN IMPORTANT ROLE AS SAFETY LEADERS AT THEIR MINE SITES. THEY CAN ALL BE PROUD OF THEIR PERFORMANCE TODAY."

Mr Cornford also thanked Yancoal for partnering with Newcastle Mines Rescue in hosting the competition at Abel mine, which is on care and maintenance.



MAKE YOUR WAY  
ACROSS RUGGED  
TERRAINS, CART  
YOUR FISHING AND  
HUNTING GEAR AND  
BLEND IN WITH YOUR  
SURROUNDS ON THE  
CB4 HUNTING BIKE.

# HUNT, FISH AND FORAGE

Mount bows, arrows, rifles, fishing rods, you name it, you can cart it. Features include massive 3.8-inch tires that will run over any surface, full range gearing that can take on any slope and a wide handlebar for maximum control when chasing critters.

[WWW.REALTREE.COM](http://WWW.REALTREE.COM)



# SURVIVAL SPEAKER

WE HAVE ALL BROKEN OUR FAIR SHARE OF SPEAKERS IN OUR TIME I'M SURE. BUT THERE WON'T BE ANY BREAKING OF THE PHILIPS SHOQBOX SB7200 BAR-STYLE WIRELESS MOBILE SPEAKER.

Built to survive those parties that go on for days and those rowdy nights around the campfire, you'll be stoked with the durability of this little baby.



[WWW.PHILIPS.COM](http://WWW.PHILIPS.COM)



# FUTURISTIC CAMPER

ENJOY THE BEST OF THE OUTDOORS IN PURE COMFORT AND ELEGANT CLASS INSIDE THE NORTH FACE FUTURELIGHT CAMPER, BRINGING TOGETHER TWO MASSIVE NAMES BMW AND NORTH FACE.

Even a snowmobile or a motorcycle can pull this lightweight geodesic dome. A revolution in the world of camping and outdoor adventures.

[WWW.BMW.COM](http://WWW.BMW.COM)

# EAT ON THE GO

IMAGINE BEING ABLE TO PULL OUT THE CRISP COLD WINE AND DELICIOUS SNAGS TO CHUCK ON THE BBQ ANYWHERE, ANYTIME!

That's exactly what the Anywhere Fridge allows you to do. Solar powered, collapsible, exterior USB ports and a controller to set the internal temperate, you can take a moveable feast with you anywhere you please.

[WWW.INDIEGOGO.COM](http://WWW.INDIEGOGO.COM)



# Bag & Butt REST

THE TRANSFORMING BACKPACK CHAIR ALLOWS YOU TO NOT ONLY CARRY ALL YOUR GEAR BUT ALSO REST THAT ACHING BUTT OF YOURS ON THOSE LONG HIKES.

As you rest your glutes, your stashed away gear remains safely in the removable side bags for easy access to snacks.

[WWW.TRAILFORM.COM](http://WWW.TRAILFORM.COM)

# PONTOON POWER

TAKE YOUR FISHING GAME TO THE NEXT LEVEL BY TAKING THIS BAD BOY DOWN TO THE RIVER OR LAKE.

A fisherman's dream, it has every feature you could possibly need from a rod holder, anchor system, padded fold-down seat, huge storage capacity for those extra flatty's you just caught and heavy-duty materials to tackle any climate.



[WWW.AMAZON.COM](http://WWW.AMAZON.COM)

# Double R EQUIPMENT REPAIRS

The established and trusted name in mining.

Double R is an award winning "One Stop Shop" offering New Machinery Sales, and Trade Services to the Mining, Transport, Agricultural, Marine, and Construction industries. Authorised sales and service dealer for Deutz Fahr, and Dieci Telehandlers.



- HEAVY EQUIPMENT REPAIRS
- HEAVY VEHICLE REPAIRS
- UNDERGROUND HARD ROCK EQUIPMENT REPAIRS
- RMS AUTHORISED INSPECTION STATION
- LIGHT VEHICLE REPAIRS
- AUTO ELECTRICAL
- AIR CONDITIONING REPAIRS AND SERVICING
- TRUCK AND LIGHT VEHICLE WHEEL ALIGNMENTS
- LABOUR HIRE
- ENGINEERING AND MACHINING
- BOILER MAKING AND FABRICATION
- STRUCTURAL CONDITIONING AND PAINTING TO SPECIFICATION
- MOBILE LINE BORING
- LIQUID NITROGEN
- UNDERGROUND COAL SERVICES

## Why should you engage Double R?

TEAM ONE STOP ADAPTIVE RESPONSIVE RELIABLE

A GREAT CULTURE COMMITTED TO THEIR CLIENTS EXTENSIVE SERVICES AVAILABLE AT THE DOOR STEP DEVELOPS CUSTOMISED SOLUTIONS TO THE NEED DELIVERING AND EXCEEDING EXPECTATIONS CONSISTENCY OF DELIVERY

HUNTER VALLEY  
02 6571 4249  
hunervalley@dblr.com.au

LEINSTER  
08 9037 3804  
leinster@dblr.com.au

GUNNEDAH  
02 6780 9601  
gunnedah@dblr.com.au

KARRATHA  
08 9185 2699  
karratha@dblr.com.au

MUDGEES  
02 6372 3257  
mudgee@dblr.com.au

[dblr.com.au](http://dblr.com.au)



# UPPER HUNTER GOLF DAY

23 AUGUST 2019 | MUSWELLBROOK GOLF CLUB

Hole Sponsorship Package \$700 (incl. 4 players)

- Designated Hole to promote business products & services
- 18 holes of golf for 4 players
- Gourmet BBQ Lunch
- Commemorative player gift.

BOOK NOW Call Danny Eather 0439 072 077 or visit [www.rescuehelicopter.com.au/events](http://www.rescuehelicopter.com.au/events)



1800 155 155 | [www.rescuehelicopter.com.au](http://www.rescuehelicopter.com.au)





WIN!

GET SWEATY!

F45

F45 PUTS THE FUN IN FUNCTIONAL TRAINING AND ARE OPENING A NEW STUDIO SOON IN CESSNOCK.

We are offering one lucky reader the chance to win a month's free membership for both you and a mate valued at over \$200 each.

Not only that, everyone who enters the competition will score a free 1 week trial.

Limit of one entry per person. LTPM/19/04020

FOR YOUR CHANCE TO WIN, SIMPLY SMS: F45 CESSNOCK, YOUR NAME, AND YOUR EMAIL ADDRESS TO 0438 474 290.

@F45\_TRAINING\_CESSNOCK/ @F45CESSNOCK/ WWW.F45TRAINING.COM.AU/CESSNOCK/

By submitting an entry, you consent to the use of your contact details for promotional and marketing purposes.

Do you work in the mining industry in the Hunter Valley?

Are you getting the best deal on your mortgage?

- We are locally owned and offer a free mortgage broking service with over 30 lenders available
- We will come to you at a time and place that suits you
- We will show you what our lenders have to offer
- We will advise the most suitable loan for your needs
- We will guide you through the purchase or refinance process, one step at a time

To book your FREE Home Loan strategy session call

1300 882 043

Book an appointment today!

1300 882 043

ML MANNING LENDING SOLUTIONS

support@manninglendingsolutions.com.au

www.manninglendingsolutions.com.au

Touch footy TALENT!

REFeree LEGEND BARRY NICHOLS RETURNS FROM THE TOUCH WORLD CUP IN MALAYSIA AFTER REPRESENTING AUSTRALIA ON THE WORLD STAGE.

Last time we spoke to Barry Nichols, we were humbled by his absolute love and passion for the sport of Touch Football. This refereeing champion has humbled us yet again with a passionate outlook on his World Cup experience.

Barry played touch for around 35 years in Singleton and surrounding areas, before discovering his love for refereeing. The Shotfirer from Glencore's Ravensworth mine is now locally and internationally sought after.

Invited to represent his country and our town at the Touch World Cup major tournament, Barry gave the experience his all and was extremely grateful to Orica Mining Services for sponsorship to help him fund the trip.

**BARRY WAS ONE OF 120 FIT REFEREES WHO TRAVELLED FROM AROUND THE WORLD IN SUPPORT OF THE 2019 CUP. "IN THE WEEK WE WERE THERE I LOST 8 KILOGRAMS DUE TO THE TEMPERATURE AND HUMIDITY," SAID BARRY.**

"This tournament included 28 nations from all over the world, some of them are still developing touch in their countries and with this tournament it was amazing how and what these countries learnt in that week," he added.

The trip gave Barry a unique insight into the obstacles that people from around the world face when it comes to something as simple as playing sport. "One of the special moments was giving away my football boots to the Papua New Guinea team who train in bare feet simply because they can't afford boots," said Barry.

**"TO SEE THE EYES ON THE PLAYERS IN THIS SMALL ASSOCIATION WAS SOMETHING I'LL NEVER FORGET AS WE TAKE A LOT OF THINGS FOR GRANTED IN AUSTRALIA."**

Barry is definitely one to look up to, both as a sportsman and a person. As he humbly put it back in 2018, "not bad for an old bloke from a mine site in the Hunter."



SCONE CAPTAIN DANIEL RITTER RECEIVING THE WILL CARRIGAN SHIELD

BENGALLA GROUP 21

GROUP 21'S 'MAGIC ROUND' FOR WHERE THERE'S A WILL WAS BIG, FUN AND A MASSIVE SUCCESS. MORE THAN 3000 PEOPLE PASSED THROUGH THE GATES OF THOROUGHbred PARK IN SCONE ON SATURDAY JUNE 27 FOR THE 35 GAMES ALL FEATURING A THOROUGHbreds TEAM, FROM UNDER 6S RIGHT THROUGH TO FIRST GRADE.

From 8.30am the grounds were a sea of colour as players from all clubs donned their special WTAW Rainbow socks and this enthusiasm was shared at other games right across the Upper Hunter over the weekend. After their early morning game in Scone, the Merriwa Magpies Under 8s continued spreading the message at McDonald Jones Stadium, wearing their WTAW socks in the exhibition game before the Knights/Broncos game on Saturday.

So far funds raised are well north of \$50,000 thanks to jerseys auctions from Scone, Murrurundi and Aberdeen. \$18,000 was raised through merchandise sales alone!

The final figure is expected to rise significantly with jerseys still to be auctioned in Muswellbrook, Singleton, Denman and Merriwa. Funds raised will go directly back into each of those towns, supporting the implementation of Positive Education programmes in the schools.

A bucket was also passed around to raise funds to support the Atkins family who lost three children during the house fire in Singleton last week and the Scone and Singleton First Grade teams paused for a minute's silence before the main game to honour their memory.

**A KEY FOCUS FOR THE WEEKEND WAS ENCOURAGING PARENTS, GRANDPARENTS AND CARERS TO LEARN THEIR CHARACTER STRENGTHS AS A WAY OF IMPROVING WELLBEING BY TAKING THE FIVE-MINUTE FREE ONLINE SURVEY.**

TAKE THE CHARACTER STRENGTHS FIVE-MINUTE FREE ONLINE SURVEY AT WWW.VIACHARACTER.ORG/

Research shows that knowing your Character Strengths is a great way to boost happiness, boost confidence, improve relationships and using your Character Strengths every day make you three times more likely to report having an excellent quality of life and SIX times more likely to be more engaged at work.

WTAW enlisted the support of former Group 21 juniors now involved in the NRL to help push the cause. Cade Cust (Thoroughbreds/Manly), Jock Madden (Thoroughbreds/Wests Tigers), John Morris (Thoroughbreds/Sharks) and Kerrod Holland (Greyhounds/Bulldogs) all shared their Character Strengths and explained how they use them as professional footballers in advertisements recorded for Power FM to promote Magic Round.

**GROUP 21 STALWART MICK REYNOLDS WAS THE KEY DRIVER OF MAGIC ROUND AND HE SUMMED UP THE IMPORTANCE OF WTAW'S WORK DURING A SPEECH AT SCONE'S POST-MATCH FUNCTION.**

"My grandson Elliot doesn't know it yet, but he is already ahead in the race to grow up Happy and Healthy because of Pauline Carrigan and WTAW. He is ahead because of the wonderful teachers that give up their time to train and implement Positive Education programs in our schools."

"He is ahead because he is part of the Scone and Upper Hunter Community which is so generous with their time and their money to continue to fund this amazing Foundation called WTAW. It truly does take a village to raise a child."

SPORT @ THE COALFACE	
BENGALLA GROUP 21 LADDERS AFTER ROUND 9	
FIRST GRADE	
Scone Thoroughbreds	18 points
Aberdeen Tigers	8 points
Denman Devils	6 points
Singleton Greyhounds	4 points
RESERVE GRADE	
Merriwa Magpies	16 points
Scone Thoroughbreds	15 points
Aberdeen Tigers	13 points
Singleton Greyhounds	12 points
Muswellbrook Rams	10 points
Denman Devils	2 points
Murrurundi Mavericks	2 points
Greta Branxton Colts	2 points
Denman Devils	0 points
Greta Branxton Colts	0 points
UNDER 18'S	
Singleton Greyhounds	17 points
Aberdeen Tigers	11 points
Muswellbrook Rams	11 points
Muswellbrook Rams	10 points
Aberdeen Tigers	10 points
Scone Thoroughbreds	9 points
Denman Devils	5 points
LADIES LEAGUE TAG	
Scone Thoroughbreds	18 points
Murrurundi Mavericks	14 points
Muswellbrook Rams	13 points
Merriwa Magpies	13 points
Merriwa Magpies	9 points
Singleton Greyhounds	9 points
Muswellbrook Rams	8 points
Singleton Greyhounds	8 points
Aberdeen Tigers	6 points
Denman Devils	2 points

Scotty's

THE SERVICES WE PROVIDE

- CNC Plasma Cutting
- Tig Welding of Stainless Steel & Aluminium
- Mig & Stick Welding of Mild Steel
- Design & General Fabrication
- Sheetmetal Cutting, Folding & Punching
- Sandblasting & Painting
- Machining

3/13 THOMAS MITCHELL DRIVE, MUSWELLBROOK (BEHIND CRIB BREAK TAKEAWAY)

Locally owned and family operated with 25 YEARS IN THE INDUSTRY with an eye for detail and high standard of work.

www.scottysfab.com.au

CALL JUSTIN 0407 745 583 or email justin@scottysfab.com.au

@scottysfab

MAYFIELD GROUP

MINING AND CIVIL SPECIALISTS  
BULK DOZER PUSH  
MINE SITE REHABILITATION  
OVERBURDEN REMOVAL  
PIT SERVICES

(02) 6571 1663 www.mayfieldgroup.net

38 @ THE COALFACE | JULY-AUGUST 2019

@ THE COALFACE | JULY-AUGUST 2019 39



## Avoid blaster disaster!



**PUT YOUR SAFETY FIRST WITH THE AUSSIE PUMPS PRO GUN ASSEMBLY.**

There is no longer any excuse for that leaking or faulty gun with the cost effective Aussie Blue Pro Gun Assembly. Aussie Pumps has paired top quality 5,800 psi rated guns, with either 900 or 1,200mm stainless steel lances and nozzles, designed to fit most professional cleaning applications. Through a the "Pro Gun" program, they have been able to bring prices down substantially to encourage users to replace bad hoses or guns promptly.

[WWW.AUSSIEPUMPS.COM.AU](http://WWW.AUSSIEPUMPS.COM.AU)

## HEAVY DUTY HOSE!

**MINING EQUIPMENT NEEDS TO BE EXTRA HEAVY DUTY AND THAT'S WHAT THE NEW MINE SPEC RANGE OF HOSE REELS DELIVERS.**

Available from Tecpro Australia, the Heavy-Duty Hose Reels include a spring rewind mechanism to make it easy for operators to retract the hose after use. This feature ensures the hose can be stored simply and safely to prevent it from becoming a potential trip hazard.

[WWW.TECPRO.COM.AU](http://WWW.TECPRO.COM.AU)



## SUPER SENSOR!

**IT'S IMPORTANT TO TRACK AIR QUALITY IN THE MINING INDUSTRY AND THE AQMESH SYSTEM DOES JUST THAT WITH PINPOINT ACCURACY.**

Air pollution isn't always visible, and its causes are varied. AQMesh can measure a wide range of particulate matter and different gases in the air to parts per billion (ppb) levels. AQMesh not only uses the most accurate and reliable small-sensor technology available, it is also portable so it can be moved to different locations as required.

[WWW.ECOTECH.COM](http://WWW.ECOTECH.COM)



## PERFECT PRESSURE!

**SOLID AND EFFICIENT, THE PIRTEK PRESSURE TEST KIT WILL KEEP YOUR HYDRAULIC SYSTEMS IN CHECK.**



This versatile Pressure Test Kit allows for efficient and accurate monitoring of hydraulic systems. It features a unique lid design that opens 180° with a sturdy locking system and a separate front compartment ideal for storing other test points and adaptors. The Pirtek Pressure Test Kit comes complete with analogue pressure gauges of various pressure ranges, test 20-gauge adaptors, test point couplings, adaptors & test 20 hose assembly.

[WWW.PIRTEK.COM.AU](http://WWW.PIRTEK.COM.AU)

## Match your manifold!

**PIPES COME IN ALL SHAPES AND SIZES AND SO DO LOXFORD FABRICATIONS FITTINGS AND MANIFOLDS.**

Need a hydrant manifold? Do you have specific requirements or specifications? Loxford Fabrications can develop fittings and manifolds to match any pipe. Located in the lower Hunter Valley Loxford Fabrications are centrally located to facilitate the requirements of the local mining industry.



[WWW.LOXFORDFABRICATIONS.COM.AU](http://WWW.LOXFORDFABRICATIONS.COM.AU)

## STRAP UP!



**SPARE YOURSELF THE SORE BACK AND ACHING ARMS BY USING THE STRONG ARM STRAP FOR YOUR TRANSPORT NEEDS.**

Designed by occupational therapist, Tim Elvery together with experts from the trucking industry, the device is designed to reduce the risk of musculoskeletal injuries and make it easier for truck drivers and transport workers. The strap hooks into the curtain buckle and allows workers to keep their arms close to their body as they pull, so they can use their core strength and reduce the risk of over-stretching.

[WWW.STRONGARMSTRAP.COM](http://WWW.STRONGARMSTRAP.COM)

MESABI SERVICE CENTRE

# COXONS

## NEWCASTLE

**Specialists in Radiators, Aftercoolers & Oil Coolers**

- Nosecone and Service Exchange
- Mining, Industrial and Rail
- Agricultural and Earthmoving
- On Highway Trucks and Automotive

**1300 269 667**  
[www.coxonsgroup.com.au](http://www.coxonsgroup.com.au)



ROCKHAMPTON

TOWNSVILLE

NEWCASTLE



**6 TRUCKS FOR DRY HIRE**

- 789C
- MDG15 Compliant
- Spare major components available
- MVRs CAT Minestar ready

# Australian Remanufacturing

P/L

**REBUILT FLEET READY FOR WORK!**

37 KYLE STREET RUTHERFORD 2320  
Terry 0417 200 226 • [terry@ausreman.com.au](mailto:terry@ausreman.com.au)

[ausreman.com.au](http://ausreman.com.au)



# SOGO SHOSHA

(GO ON, GOOGLE IT!)

Offering machines with operating weights from 1,880 kg through to 837 tonnes, Hitachi draw upon an extensive and diverse knowledge base to create a well-rounded line-up of digging machines.

Often overlooked in articles for the sexy big end of town, Hitachi's range of construction/production machines are reliable workhorses that are equally at home in civil/infrastructure applications as well as mine sites.

The unsung heroes, these medium range of machines operate in a hotly contested market with Komatsu, Caterpillar, Kobelco and Liebherr (to name but a few), all vying for the top spot and ultimate customer spend. While reliability, performance and efficiency prove critical in this space, I strongly suspect the colour, operator comfort and financial deals on offer prove just as persuasive in the purchasing decision.

**INTRODUCED IN AUGUST 2016, THE ZX-5 RANGE OF DIGGERS COMPRISE 13 VARIANTS RANGING FROM THE SMALLER ZX130 THROUGH TO THE ZX890. THESE MACHINES PRINCIPALLY FEATURED A REDESIGNED HYDRAULIC SYSTEM, AUTO SHUT DOWN AND AUTO IDLE FEATURES AS WELL AS POWERTRAIN UPGRADES.**

In a market awash with options, the ZX890 faces stiff competition in the form of the Komatsu PC850, Caterpillar 385, Kobelco SK 850 and in international markets, the Liebherr R 976.

Powered by a fuel-efficient Isuzu 6-cylinder engine with 377 kW, the ZX890 and its younger sibling the ZX690 have upgraded their power packs that in previous models were at times considered underdone.

Turbocharged and intercooled, these engines provide just that extra bit of oomph and for Australian conditions are a EPA Tier 3 Equivalent engine providing greater flexibility than the Tier 4 rated engines now promoted in Europe and

America (think at the most basic levels, the challenges now being faced with cars incorporating AdBlue).

**SPORTING THICK PLATE, SINGLE SHEET MAINFRAME, BOX-SECTION TRACK FRAMES AND INDUSTRY LEADING DOUBLE-SEAL SWING BEARING, THESE MACHINES ARE ULTIMATELY DURABLE AND RIGHTFULLY EARN THEIR POSITION ON ANY AUSTRALIAN WORK SITE.**

Fitted with a 13,300kg counterweight, owners are afforded an array of digging options with bucket sizes from 3.5 to 5 cu m depended upon the application of use. With centralised lube banks and easy to access engine and hydraulic sample



## COMPONENTS ONLY

The easiest way to buy and sell heavy equipment components

THANKS TO COMPONENTS ONLY, OUR HEAVY EQUIPMENT EXPERTS

ports, operators can quickly and efficiently conduct proactive maintenance checks, ensuring longer, reliable operation (an all too often challenge with operators completing reliable pre-start checks).

As with every article and machine considered for @ The Coalface, I believe that each OEM offers its own unique blend of qualities that, depending upon your fleet and application, can prove persuasive. Be it Caterpillar, Komatsu, Liebherr, Hitachi or any of the other manufacturers, each brand has ultimately been derived from it's own backgrounds and philosophies and as such, rightfully developed a set of loyal follows.

I do however admire the Japanese, their philosophy and in instances such as Hitachi, the Sogo shosha or large trading houses that underpin their heritage, offering a breadth of sector experience that span far wider than 'just' earthmoving machines. For those of you that are in the market for a mid-size digging machine, the Hitachi ZX890 demands your attention and should not be overlooked.



# NSW MINING



**It takes lots of people in lots of local jobs to keep our NSW mines working.**

They're working in interesting and high-skilled jobs from chemical engineers, drone pilots and software developers to lab technicians, environmental scientists and train operators.

- ✓ **40,000** mining jobs across NSW
- ✓ **\$2 billion** in annual royalty taxes for essential services like nurses, teachers and police
- ✓ **\$2.6 billion** spent in 2017/18 with **4,168** local businesses in the Hunter region

[nswmining.com.au](http://nswmining.com.au)

## Process Equipment Wear Prevention Asset Management Engineering and Mechanical



Providing industrial solutions since 1978

[www.hicservices.com.au](http://www.hicservices.com.au)





# Car COMMUNITY

NOW AN INTERNATIONAL BRAND AND LIFESTYLE, STREET SOCIETY STARTED OFF AS A SMALL, LOCAL CAR ENTHUSIAST CLUB IN THE HUNTER VALLEY.

SHOW YOUR SUPPORT BY PURCHASING SOME OF THEIR AMAZING MERCHANDISE AT [WWW.STREET-SOCIETY.COM](http://WWW.STREET-SOCIETY.COM)

**F** FOLLOW THEIR FACEBOOK PAGE TO KEEP INFORMED ABOUT FUTURE EVENTS @STREETSOCIETY01



Cruises, meets, shows, merchandise, automotive content and special events, Street Society covers every area of the Street Car arena. After noticing a lack of car events in the area, Maitland local Steven Rogers created car club Street Society in 2015.

Initially a storefront to advocate his self-custom-made stickers, Steven then collaborated with friend and Videographer Zia Abdullah to create the community of car enthusiasts that they are so proud of today.

"After getting noticed by the Newcastle and Hunter crowd, that is when Street Society started to develop itself into much more than our initial project," said Steven.

The society, heavily influenced by the underground automotive industry, brings together hundreds at their meets. I have personally experienced a meet for myself and it was truly something.

From food vans, a DJ and merchandise tent right down to the dozens if not hundreds of cars that line each event, the atmosphere and ambience is exciting and unique. As Steven puts it, "I guess you could say it's like throwing a party with cars."

**THE SOCIETY HOSTED STREETFEST 2018, ONE OF THEIR GREATEST ACHIEVEMENTS TO DATE, AS HUNDREDS FLOCKED TO THE HUNTER STADIUM TO SHOW OFF THEIR RIDES AND CELEBRATE THE STREET SOCIETY BRAND.**

As a Graphic Designer, Steven is also extremely proud of the merchandise that he himself designed. "Every time I see a Street Society shirt or sticker displayed, it definitely brings a smile to my face," he said.

A passionate car enthusiast and now international brand creator and owner, Steven is also a new Dad to his beautiful 7-month-old son Keanu and partner to his wife Kim. Keanu

has already made his first meet debut and Kim plays a massive role in each event. "We love gaming and working together on future Street Society events," Steven added.

Street Society events are open to anyone wishing to attend and are currently being planned for coming months. "Our only general rule of thumb for attending our events is keeping it safe, as a primarily static event people get the wrong idea and try to show off," said Steven.

He added, "This often puts heat on our events and we battle to keep them going."

**STREET SOCIETY HAS BECOME A LIFESTYLE AND CLOTHING BRAND WITH FANS FROM EUROPE, NORTH AMERICA AND AUSTRALIA. STEVEN SAID, "IT IS SO AWESOME TO SEE THE FOLLOWING THAT WE HAVE NOW, WE EVEN HAVE A CHAPTER GROWING OVER IN PUERTO RICO AND PEOPLE SUPPORTING US WORLDWIDE."**

The club embodies a culture of positivity, enthusiasm and safety and has created an inclusive car community, home grown right here in the Hunter Valley. It is definitely a brand that the community, creator and members can be extremely proud of.

## FABRICATION

**WHITTAKER CONTRACTING**  
DIESEL PLANT REPAIR

REFURBISHMENT & OVERHAUL  
GENERAL & CUSTOM FABRICATION  
FIELD SERVICE LABOUR HIRE



**PARTS SUPPLY**

**Pride, Innovation & Quality.**

Mick Larkings  
FOREMAN | 0438 420 455  
[mick@whittakercontracting.com.au](mailto:mick@whittakercontracting.com.au)

James Peacock  
LEADING HAND  
[jamesp@whittakercontracting.com.au](mailto:jamesp@whittakercontracting.com.au)

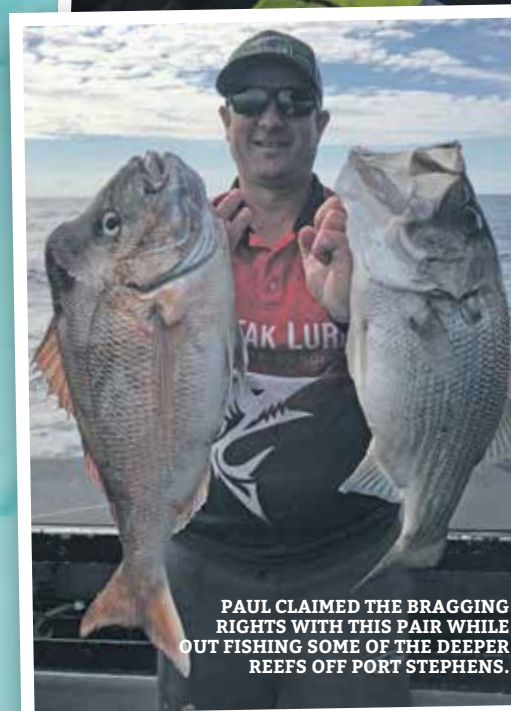
Dylan Todman  
ORANGE W/S | 0429 942 271  
[dylan@whittakercontracting.com.au](mailto:dylan@whittakercontracting.com.au)

8 Cockatoo St, McDougall's Hill, Singleton NSW 2330 | [E.office@whittakercontracting.com.au](mailto:E.office@whittakercontracting.com.au)

**PH 02 6392 0000**  
[whittakercontracting.com.au](http://whittakercontracting.com.au)

# FIND TIME TO CHILL IN JULY

JT FROM BULGA COAL WITH A NICE JEWIE CAUGHT WHILE FISHING LIVE BAITS INSIDE THE BAY.



## JUNE WRAP UP

We have been seeing some great numbers of Bream and Blackfish moving throughout the lakes, bays and estuaries with a few Jewies encountered as well.

Snapper and some solid Kingfish have been caught on and around the inshore reefs, especially after the wild weather we had last month. The most interesting thing has been the numbers of Long Tail Tuna still hanging around, with fish still being caught around Broughton Island leading into July.

## WHAT TO EXPECT IN JULY

Fishing from the rocks should be on the top of the to do list if you plan to wet a line throughout July. Whether it's from a breakwall or a rocky headland, the key Winter targets are Bream, Blackfish, Drummer, Grouper. And don't forget the chance of a Snapper waiting under the wash as well.

Try casting a few lures around in some open water targeting Salmon, Tailor and Jew. Either off the rocks, around the wash or in and around the gutters along the beaches, during sunrise or sunset, now's the time to do it.

Inshore reefs should continue to fish well with Snapper being the main target this month fishing either soft plastics or floating baits around the reef edges.

Some welcomed news with the deep-water Kings on the chew especially out around Allmark Mountain. The long run out wide would be well worth it once a weather window provides access. Another spot to consider is the Texas reef system off Norah Head as a closer option if Allmark is out of your range.

If you're keen on fishing and freezing at the same time now's time to do it with reports of good numbers of Cod encountered in Copeton Dam. The word is swim baits and surface lures are doing the damage so it would definitely be worth a trip out between shifts.

**Keep floatin' - Thrifty'stext**



YOUNG GUN, TIA FEAR (12) WITH HIS CATCH AT WOOLLI NSW.

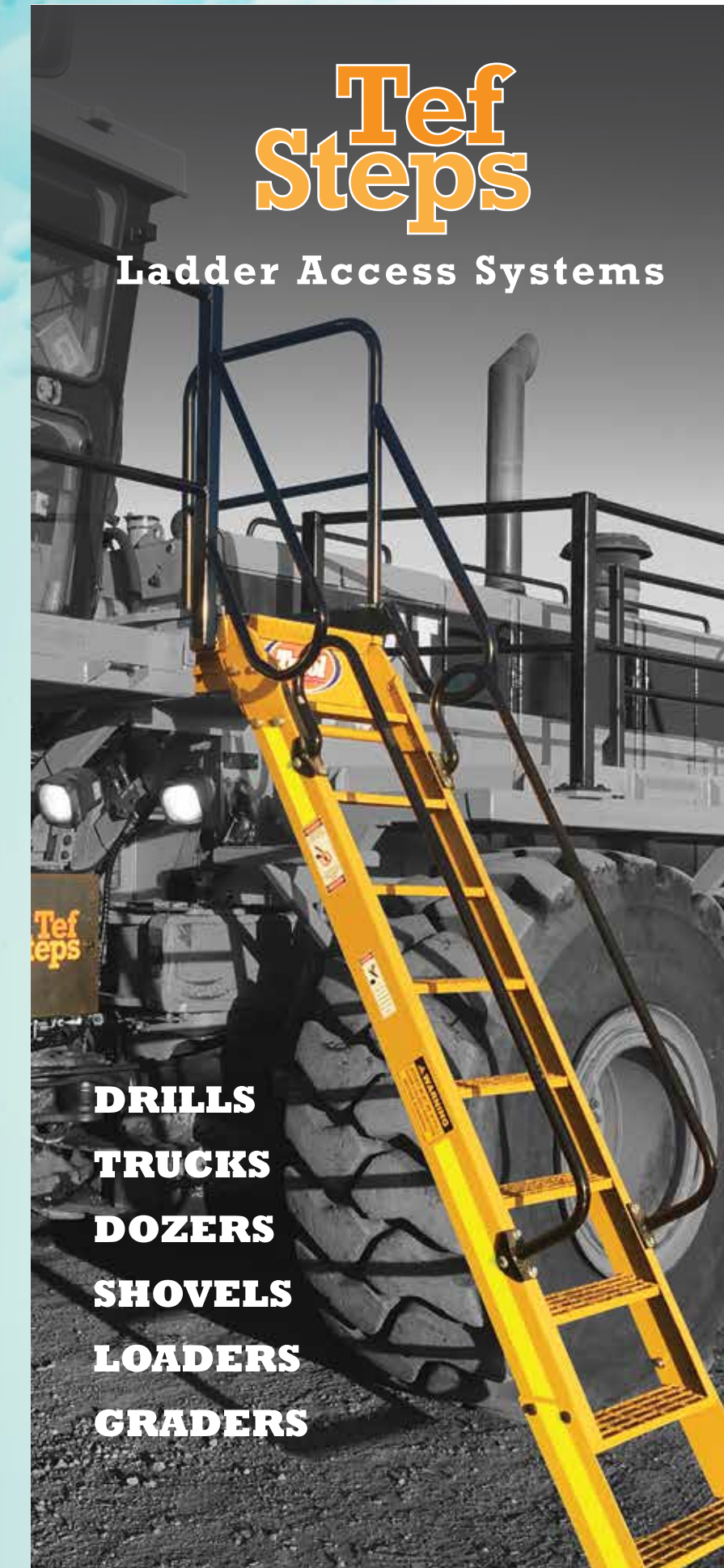
**SEND US A PIC OF YOUR YOUNG GUN TO WIN A \$50 BCF VOUCHER IF IT GETS PUBLISHED!**



**Tef Steps**

Ladder Access Systems

**DRILLS  
TRUCKS  
DOZERS  
SHOVELS  
LOADERS  
GRADERS**



**"TefSteps save our customers at least 40% on access system maintenance costs"**

**Tefol**  
[tefol.com.au](http://tefol.com.au)



# CHILDISH BEHAVIOUR

GETTING THE KIDS OUT OF THE HOUSE AND OUT OF YOUR HAIR DURING THE SCHOOL HOLIDAYS IS A MUST, SO HERE ARE SOME OF OUR FAVOURITE ACTIVITIES TO KEEP THEM BUSY.



**GO-KARTS-GO**  
[WWW.GOKARTSGO.COM.AU](http://WWW.GOKARTSGO.COM.AU)

Go Karts Go at Kearsley have the biggest 4-stroke outdoor go kart track and the fastest 4-stroke karts in the whole of the Hunter Valley region. Beginners from as young as 3 years of age to the more experienced right up to 99 years of age can all have their time on the track!



**HUNTER WETLANDS CENTRE**  
[WWW.WETLANDS.ORG.AU](http://WWW.WETLANDS.ORG.AU)

The Hunter Wetlands Centre is Australia's longest running community owned wetlands centre. There are things for the whole family these school holidays from guided canoe tours to Waterbird drawing workshops. Don't forget to pack a picnic and enjoy some lunch around the wildlife.



On Lake Liddell is an action-packed venue with indoor skydiving, laser tag, go karts and a rock climbing wall. This family owned business will get your adrenalin pumping whatever your age.

**GJ'S BY THE LAKE**  
[WWW.GJSBYTHELAKE.COM](http://WWW.GJSBYTHELAKE.COM)



**HUNTER VALLEY HORSES**  
[WWW.HUNTERVALLEYHORSES.COM](http://WWW.HUNTERVALLEYHORSES.COM)

Hunter Valley Horses offer horse riding for all levels and have a horse to suit everyone. This is a great way to get the kids off their iPads and in the actual outdoors while you enjoy the beautiful Hunter Valley scenery.

**HEDDON GRETA DRIVE IN**  
[WWW.DRIVE-IN.COM.AU](http://WWW.DRIVE-IN.COM.AU)



Fill the car with the kids, pack some chairs and blankets and grab yourself a monster size popcorn. These school holidays are filled with some of the kid's favorites, Pets 2 and Toy Story 4 on the big screen. You will need an FM car radio or a portable FM radio and don't forget the snacks.

**HUNTER VALLEY GARDENS**  
[WWW.HUNTERVALLEYGARDENS.COM.AU](http://WWW.HUNTERVALLEYGARDENS.COM.AU)

It's snow time at Hunter Valley Gardens! Glide on the giant ice-skating rink, slide down the mega ice toboggan and build a snowman in the man-made Snow Play Zone. Plus, plenty of rides, entertainment, hearty food and warming beverages.



**PEARLS OF AUSTRALIA** [WWW.PEARLSOFAUSTRALIA.COM.AU](http://WWW.PEARLSOFAUSTRALIA.COM.AU)

Broken Bay Pearl Farm Tour allows you and your family to explore the incredible marine wilderness of the Central Coast by Catamaran. By sea there are pelicans, turtles, stingrays and many other marine creatures to see and by land, there is a hands-on session where you can learn all about their world class pearls.

# BROTHERS Make it Big

FROM THE SMALL TOWN OF HINTON IN THE HUNTER VALLEY, CRAWFORD IS AMBITIOUSLY DOMINATING THE MUSIC SCENE.



## UPCOMING SHOWS

**JULY 26 / 6 PIECE**  
SPINNING WHEEL HOTEL

**AUGUST 31 / SJ'S 4 PIECE**  
SYDNEY JUNCTION HOTEL

AND MORE TO COME...

Founding members and brothers Ben and Zac Crawford along with Blake Simighean and Aiden Smith form a band now known as Crawford and have taken the national and international music industry by storm.

Recently making the top 10 of 'Pop/Top 40' in the International Songwriting Competition alongside famous artists like Amy Shark, Dean Lewis, Ruel and Vera Blue in 2018, it's clear Crawford is one to watch.

**THE BAND ALSO WON THE 'BEST ROCK SONG' IN THE JOHN LENNON SONGWRITING COMPETITION WITH THEIR SONG FEEL IN 2016 AND REPRESENTED AUSTRALIA AT THE GLOBAL BATTLE OF THE BANDS IN THAILAND IN 2013. WE DON'T HAVE ENOUGH ROOM TO LIST ALL THEIR ACHIEVEMENTS, BUT YOU GET THE IDEA, THEY'RE GOOD, REALLY GOOD.**

Once known as The Crawford Brothers, the group recently made

the decision to shorten the band name to Crawford ("Van Halen style" as Ben puts it). "It keeps it simple, looks way better on print and people won't immediately assume that we're a country group, with the 'Brothers' thingy majiggy...We also wanted to further acknowledge our band members and make it more about a group/bond of musicians as opposed to just the Ben and Zac show," Ben added with a chuckle.

Currently doing a mix of shows as a 4-piece and 6-piece band, artists Luke Bradbury and Mitch Lowe add the Trumpet and Trombone to the tour.

But it hasn't always been smooth sailing for these talented artists. Ben said, "It's been a major mental rollercoaster at times which is unfortunately a common thing amongst musicians."

"Our first manager in the US is now facing life in prison...we then made a very naive decision to sign with a

MGMT mob out of Los Angeles, yikes! Let's just say it was like liaising with a rock," Ben said.

**BEN ADDED, "YOU HONESTLY HAVE TO HAVE THE MENTALITY OF A UFC FIGHTER IN THE CURRENT MUSIC INDUSTRY...IF NOT FOR OUR LOVE OF MUSIC, WRITING AND PERFORMING I'D NO JOKE BE HANDS DOWN WORKING ON THE RAIL."**

But the stories that come from the touring life are definitely one of the highlights when chatting to the band. "I once threw up on stage after the first song when we were performing in London for a competition," said Ben.

"I felt so bad for the band that followed straight after, my apologies to the band from Japan back in 2008," Ben added with a laugh.

The group truly love what they do and it's clear the absolute passion that Ben and Zac have for the industry. The brothers have

been composing the musical score for an independent horror film 'Unleashing Demons' premiering July 12 at The Star Bar in Sydney whilst also writing new material for the band, playing shows, rehearsing and producing.

**"BEING ABLE TO EXPRESS YOURSELF IN WAYS THAT MANY CAN'T, CREATING SOMETHING FROM NOTHING, PERFORMING FOR PEOPLE AND SHOWCASING YOUR ART IS THE BEST THING ABOUT WHAT WE DO," SAID BEN.**

With so much success, the band still has lots of goals for the future. "Our goals are to continually improve as musicians and people, release more singles and drop a second E.P of all brand-new songs either late this year or early 2020," said Ben on behalf of the band.

Their energy is insane, and their music even better so have a listen to Crawford and check them out at one of their next shows.

KEEP UP TO DATE ON ALL THINGS CRAWFORD AND TO SHOW YOUR SUPPORT



@CRAWFORDTHEBAND



@CRAWFORD BROTHERS BAND



remedial • mining • fire • infrastructure

- Structural Strengthening
- Construction
- Grouting & Jointing
- Mitigation Works
- Protective Coatings
- Waterproofing
- Concrete Structures
- Shotcrete Application
- Concrete Repair & Remediation



2/63 Hedley Rd, Mt Thorley 2330 • [info@structural.com.au](mailto:info@structural.com.au) • 02 6574 6882 • Builders Licence 244499C

# RECRUITING NOW!

- Civil Operators
- Labouring
- Trades and Engineering
- Administration



**CHANDLER MACLEOD**  
UNLEASHING POTENTIAL

## Dump Truck Operators

- Casual dump truck operating positions
- Crib Relief operating roles
- Semi-Skilled Operating positions
- Lifestyle and 4-Panel roster options
- Overtime available

**02 6572 5900**

[nswminingjobs.com.au](http://nswminingjobs.com.au)



# Relax & unwind.

Surrounded by soothing sounds of trickling water, views of luscious greenery and comfortable, modern, contemporary furnishings the unique features of Leaves and Fishes restaurant are one to experience. I cannot begin to describe how serene and relaxing the environment really is. It's like an escape from reality, like being transported to an exotic island location far away from the hustle and bustle of everyday life. I could have sat their staring off into the calming scenery for hours.

**I TOOK A SEAT AT A WATERSIDE TABLE AFTER BEING GREETED BY SOME EXTREMELY FRIENDLY SERVICE. I COULDN'T WAIT TO SEE IF THE FOOD WAS AS INCREDIBLE AS MY SURROUNDINGS.**

The menu offers a range of seafood selections along with some Asian inspired dishes. Paired with some great Hunter Valley wine and some quality company, it's the perfect location for a tasty lunch or a full-flavoured moonlit dinner.

Following a crisp glass of bercini bolla sparkling Semillon, my beautifully presented entrée of fried Cyprian haloumi, pickled Thai eggplant chutney and puffed wild rice arrived.

The wild flavour of the pickled chutney was absolutely divine. A mouthful of the warm haloumi paired with the blissful taste of the chutney and topped with a crunch of the puffed rice created a celebration of flavour in my mouth. This unique dish was one of my all-time favourite entrées.

My main then followed, the Malaysian spiced chicken with coconut cream, candle nuts and kipfler potatoes. Again, the presentation of the dish was gorgeous.

LEAVES AND FISHES RESTAURANT IS A HIDDEN GEM IN THE HUNTER VALLEY WITH AMAZING, TRANQUIL VIEWS AND COLOURFUL MEALS THAT ARE SIMPLY HEAVENLY.



**THIS DISH WAS JUST AS GOOD AS MY ENTRÉE, IF NOT BETTER. THESE LITTLE FIERY RED PEPPERS THAT TOPPED THE DISH GAVE EVERY MOUTHFUL A TANGY EXPLOSION OF PLEASANT, EXOTIC FLAVOUR. THE CHICKEN WAS COOKED TO ABSOLUTE PERFECTION AND I POLISHED OFF THE PLATE TO DEVOUR EVERY LAST BITE.**

It was time to loosen my belt as I made room for dessert. I rarely push myself to eat this much, but I couldn't resist after two courses of delectable goodness.

To finish, I had the tapioca with pandam, caramelised pineapple

and roasted coconut. The fresh taste of this dish was the perfect ending to a perfect lunch. After eating so much food, it was great to have a refreshing dessert that felt light and fruity.

The Lovedale restaurant is open

for lunch Wednesday to Sunday and dinner Friday and Saturday evenings. If you're trying to impress your next date or a client or just looking for a memorable dining experience, book a table at Leaves and Fishes.

FOR MORE INFORMATION, TO VIEW THE FULL MENU OR BOOK A TABLE VISIT [WWW.LEAVESANDFISHES.COM.AU](http://WWW.LEAVESANDFISHES.COM.AU)

PIEMINISTER

# EASY LIKE A SUNDAY MORNING

ONE MINUTE I'M LIKE AN INMATE IN A HIGH SECURITY PRISON BEING WORKED TO THE BONE SEVEN DAYS A WEEK RUNNING A PUB WITH ONLY THREE DAYS OFF IN THREE YEARS, AND 'VOILA', EVERY DAY IS A SUNDAY - EXCEPT FOR THE CHURCH PART.

So how is retirement going I hear you ask? Well it has been pretty interesting to say the least. With every day being a Sunday, my Sundays always start with holy water, and a fresh can of XXXX is the kind of water we drink around here.

Most days after a refreshing breakfast beer I have been reacquainting myself with my baking brotherhood and visiting local centres of pastry excellence to check on standards. I have to tell you; the bakeries of the Hunter Valley are famous for pies for a reason.

The Kingswood is loving my retirement as well, as most days she is getting a run to one pie shop or another and more knob polishing than she thought she could handle. That's gear knob polishing by the way for the perverted reading this!

My golden girl - The Kingswood, not the missus by the way, has also taken me over Gloucester way, up to Murrurundi and across to Merriwa. At each and every pie stop I have been smashing them like Mike Tyson at his face crushing best.

EVEN THE DOCTOR HAS COMMENTED ON THE PROFOUND EFFECT'S RETIREMENT IS HAVING ON MY HEALTH. I'VE PUT ON TWO STONE AND RAISED MY CHOLESTEROL AND BLOOD PRESSURE AS WELL. I'M ACHIEVING A LOT IN RETIREMENT.

My other golden girl - the missus, well she is loving life in retirement. As promised, I'm letting her put her feet up - well on Tuesdays at least. Well Tuesday afternoons to be precise. Tuesday mornings are reserved for love making, a strange tradition my forefathers introduced where we procreate on the last day of the first half of the week to propel and invigorate us into and over hump day. Now that every day is like a Sunday though, the missus is trying to use it as an excuse to get out of her marital duties.

Anyway, enough personal secrets, get out there and get stuffed! On Hunter Pies that is! See ya soon Sol.

FROM BLAKENEYS IN MAITLAND TO RIDGEY DIDGE PIES ON THE WAY TO CESSNOCK, MY BAKING BUDDIES ARE CONTINUING TO SET THE STANDARDS I SET FOR THEM TURNING GOLDEN FLAKEY GOODNESS INTO GREATNESS.

Clubhouse HOTEL SINGLETON

# BEER O'CLOCK

WIN A 6 PK OF HOLGATE HOP TART SEMI SOUR PALE ALE AS FEATURED IN THIS MONTH'S BEER REVIEW.

FOR YOUR CHANCE TO WIN, SIMPLY SMS: BEER'S ON US, YOUR NAME, AND YOUR EMAIL ADDRESS TO 0438 474 290.



Limit of one entry per person. LTPM/19/04020

BY SUBMITTING AN ENTRY, YOU CONSENT TO THE USE OF YOUR CONTACT DETAILS FOR PROMOTIONAL AND MARKETING PURPOSES.

## OPERATIONAL EQUIPMENT HIRE

WITH 24 HOUR SUPPORT  
All of our equipment (which includes our LED lighting towers) comes with 24 hour breakdown assistance, is either low hours or brand new and can be hired wet or dry. We also supply relevant safety gear and information and carry out regular servicing.

## ONSITE LABOURING SOLUTIONS

We supply onsite mechanical staff, onsite auto electrical staff, operators, as well as general labour. Every member of our carefully selected labour team comes site inducted and has extensive experience in their field.

## AUTOMOTIVE SERVICES

INCLUDING WORKSHOP WITH 8 BAY SHED AND GROUND PIT  
Our highly-trained team covers electrical, mechanical and air-conditioning maintenance and repairs for all types of vehicle. We stock an extensive supply of parts, and also offer other services such as free pickup and delivery.

Phone: 02 6543 2307  
Web: [www.nwminingcompany.com.au](http://www.nwminingcompany.com.au)

Lot 14 Thomas Mitchell Drive Muswellbrook NSW 2333  
ABN/ACN: 48147724552/147724552

## BOWDLER'S BEER REVIEW

@ THE COALFACE BEER EXPERT RICHARD BOWDLER BRINGS YOU THIS MONTH'S BEER REVIEW.

**HOLGATE HOP TART SEMI SOUR PALE ALE.**

**Made:** Victoria Australia  
**Info:** Brewed with Ella, Topaz, Citra and Galaxy hops. Malted with Pale, Munich and Wheat malt  
**Cost:** \$22 / 6pak  
**Alcohol:** 4.6%  
**Color:** Light golden, very slight cloud  
**Nose:** Fruity hops smell from the Citra hops component  
**Taste:** Pleasant, Ale like, Crisp and Refreshing

**Mouth:** Full bodied and surprisingly like a proper pale ale... omg  
**Aftertaste:** A mid bitter finish that starts at 3 seconds and keeps running to a good 14 second mark. A proper pale ale finish.  
**Comments:** A proper pale ale that lives up to its label. An ale taste and body with a lingering hops finish. Damn impressive in a marketplace full of wanker pretend pale ales. This one is a winner fellas.  
**Score:** 9.5 / 10

## ProMine Contracting Pty Ltd

02 6572 2931  
1/4 Magpie St, Maison Dieu  
email: [admin@pro-mine.com.au](mailto:admin@pro-mine.com.au)

Fleet Maintenance Specialists

FULL MECHANICAL & AUTO ELECTRICAL SERVICES  
SERVICING THE MINING & PUBLIC SECTOR  
EXPERTS IN 4WD & LIGHT COMMERCIALS  
SUSPENSION SUPPLY & FITMENT | REGO INSPECTIONS  
AIR CONDITIONING | QUALITY PARTS PROCUREMENT



MUSIC  
GREATS  
WORD SEARCH

B	A	N	Y	D	S	A	R	P	G	H	M	Q	I	L
E	T	H	E	B	E	A	T	L	E	S	I	C	N	E
E	R	O	R	G	S	L	T	U	P	A	C	A	S	O
G	A	J	I	N	O	E	A	B	S	C	H	M	K	J
E	W	N	T	O	R	D	L	E	K	Y	A	D	E	Y
E	E	O	N	S	N	Z	A	R	O	N	E	O	N	L
S	T	T	E	L	S	E	N	I	O	N	L	O	N	L
E	S	L	C	E	N	P	J	C	R	H	J	W	Y	I
L	D	E	M	N	U	P	A	C	B	O	A	T	R	B
G	O	M	A	E	G	E	C	L	H	J	C	E	O	S
A	R	I	B	I	C	L	K	A	T	E	K	E	G	T
E	C	N	E	L	V	I	S	P	R	E	S	L	E	Y
E	D	E	R	L	P	N	O	T	A	M	O	F	R	V
H	C	M	M	I	O	O	N	O	G	B	N	S	S	I
T	A	B	M	W	E	P	I	N	K	F	L	O	Y	D

ACDC	ERIC CLAPTON	MICHAEL JACKSON
ALAN JACKSON	FLEETWOOD MAC	PINK FLOYD
BEE GEES	GARTH BROOKS	REBA MCENTIRE
BILLY JOEL	GUNS N ROSES	ROD STEWART
ELTON JOHN	JOHNNY CASH	THE BEATLES
ELVIS PRESLEY	KENNY ROGERS	THE EAGLES
EMINEM	LED ZEPPELIN	TUPAC

@ THE COALFACE  
PRIZE WINNERS

VOLUME 3 – NO 8: JUNE-JULY 2019

Components Only Crib for the Crew	Molly McFarland
Crib Bag	Nicole Morgan
Roberts Meats Raffle	Tony Janssen
Beer's On Us	Nikki Stevens
Café La Luna Cake	Teresa Smith
Complete Parts Truck	Scott Dunn
Raw Dog Food	Duncan Collins

CONGRATULATIONS TO ALL OUR WINNERS!

THIS MONTH'S  
@ THE COALFACE TRIVIA  
FAMOUS LANDMARKS OF THE WORLD

- Q1. Where in India is the Taj Mahal?  
Q2. Which Country built and donated the Statue of Liberty to the United States?  
Q3. Which river flows through the Grand Canyon?  
Q4. What year was the Sydney Opera House officially opened?  
Q5. Where is the Louvre Museum located?  
Q6. Which Belgium city is the Atomium located?  
Q7. What is the name of the famous Cathedral in Moscow, Russia?  
Q8. In what Mountains is the Machu Picchu in Peru set in?

A1: Agra	A2: France	A3: Colorado River
A4: 1973	A5: Paris	A6: Brussels
A7: St. Basil's Cathedral	A8: The Andes Mountains	

Snow  
MUCH FUN!

WHAT BETTER WAY TO EMBRACE THE FREEZING WEATHER THAN TO GO SKIING DOWN THE SNOW-COVERED SLOPES IN THE SNOWY MOUNTAINS.

Look, if you're going to be cold you may as well be having a bit of fun at the same time. A snow trip is the best way to take advantage of the winter weather, look cute in some fluffy snow gear and have a blast skiing and snowboarding. The Snowy Mountains is around an 8.5-hour drive from Gunnedah, a decent trip but achievable in a day, or you can stop of at one of the great little towns like Cowra or Canberra for a night's stay to split up the travel.

THERE'RE A FEW OPTIONS FOR ACCOMMODATION, BUT MY SUGGESTION WOULD BE TO STAY AT THE NEARBY TOWN OF JINDABYNE, A BEAUTIFUL TOWN OVERLOOKING A LAKE AND FILLED WITH BUSTLING PUBS FOR A HOT MEAL AND A BEER.

Both Thredbo and Perisher are within driving distance of the small town, so chuck on your boots and take your pick of the two.

On the first day we visited Perisher Ski Resort, labelled the largest ski resort in the Southern Hemisphere, and boy did we have a ball (and a few falls).

As amateur skiers and snowboarders, we decided to take some lessons to start the day off. Quick and easy, we were up the mountain in no time ready for our first run down.

IF YOU HAVEN'T DONE IT BEFORE, I WOULD NOT SUGGEST SNOWBOARDING DOWN THE MOUNTAIN FROM THE TOP AFTER JUST A SHORT LESSON THAT MORNING. MY MUM THOUGHT IT WAS A GREAT IDEA AND TOOK OUT THREE SMALL CHILDREN AND AN INSTRUCTOR ON THE WAY DOWN.

After a day of skiing, snowboarding, bruises and lots of laughter, there was no better way to finish it off than with a few rounds of cocktails at the nearby Man From Snowy River Hotel.

A quick trip back to town and we were exhausted. A day on the slopes really takes it out of you, especially if you're a Sedentary Sally like me. I was asleep before my head even hit the pillow.

The next day, Thredbo was on the cards. Both ski resorts are great in their own way with Thredbo taking claim to a higher drop from the top of the mountain.

We got stuck right into it, no lessons needed, and jumped on the ski lift to head up the top. I should mention, the ski lift can be a bit tricky. You need to jump off it pretty quickly at the top so prepare yourself. Or like me, you can fall off numerous times before getting the knack of it.

Don't have your own snow gear? Not to worry, neither did we. You can hire every bit of snow gear at both Thredbo and Perisher, from jackets and pants to snowboards and skis and even wrist guards for the less coordinated of the group. You can also book this equipment online to avoid the lines.

So, what are you waiting for? Book a weekend away or take the week off work for a holiday of snowman building, snowball throwing, snowboarding and skiing fun. It's not an escape from the cold, it's taking full advantage of it!



MACHEnergy  
Mount Pleasant Operation

MACH Energy Australia oversees commitments relating to the Aboriginal Community Development Fund (ACDF)

MACH Energy welcomes the opportunity this provides for us to make a meaningful contribution to the sustainability and well-being of Aboriginal communities in the Upper Hunter Valley

ACDF - "Targeting issues, needs & opportunities of local Aboriginal communities"

For Applications or further information about the ACDF please visit:  
<https://machenergyaustralia.com.au/aboriginal-community-development-fund/>

AIMEX

27 - 29  
AUGUST  
2019

SYDNEY SHOWGROUND  
SYDNEY, AUSTRALIA

FREE  
MULTI-STREAM  
CONFERENCE

500+  
INDUSTRY  
SUPPLIERS

6,000+  
INDUSTRY  
PERSONNEL

AT THE CORE OF MINING INNOVATION

FOR MORE INFORMATION VISIT [AIMEX.COM.AU](http://AIMEX.COM.AU)

INDUSTRY SUPPORTERS



GLENCORE





# WE SOURCE AND SELL COMPONENTS GLOBALLY TO KEEP YOU MOVING



**COMPONENTS  
ONLY**

**1300 726 801**  
**WWW.COMPONENTSONLY.COM**  
**SALES@COMPONENTSONLY.COM**