

HUNTER INDUSTRY, COMMUNITY, SPORTS & ENTERTAINMENT

**@THE
COAL
FACE**

Vol 3 No 4: February 2019

Available online @ thecoalface.net.au



THE FIRST COAL ROLLS OUT AT MACH ENERGY AUSTRALIA'S MOUNT PLEASANT OPERATION.

**MOUNT PLEASANT
SEES FIRST COAL**

PAGE 6



**TRIUMPHANT
TOBY**

PAGE 44

TOBY PRICE BRINGS HOME HIS SECOND DAKAR TITLE.



PACKED PAC

HUNDREDS SHOW UP TO THE PAC MEETING FOR THE EXPANSION OF UNITED WAMBO COAL MINE.

PAGE 7



PH +61 (2) 6540 9400
mrssg.net info@mrssg.net

39-43 Thomas Mitchell Drive
Muswellbrook NSW 2333 Australia

Civil & Earth Works

- MINE REHABILITATION PROJECT TEAM
- CONVEYOR AND MATERIAL HANDLING CLEAN-UP SUPPORT
- POLY PIPE SUPPLY AND INSTALL
- INFRASTRUCTURE AND GENERAL MAINTENANCE INCLUDING LANDSCAPING
- TRAFFIC CONTROL SOLUTIONS (RMS APPOINTED TRAFFIC CONTROLLERS)
- CIVIL WORKS AND PROJECTS
- ROAD AND CONSTRUCTION MAINTENANCE
- FLOAT HIRE
- MOBILE INDUSTRIAL PRESSURE CLEANING
- MOBILE INDUSTRIAL BLAST AND PAINTING

Brauntell Mining Products

THE REVOLUTION HAS ARRIVED

WE ARE PROUD TO ANNOUNCE THE ALL NEW

G4 EASY TRAY

NOW AVAILABLE IN AUSTRALIA



Minetec engineers have developed a modular body system that revolutionises service, repairs and time. This highly innovative design ensures your cost of ownership is dramatically reduced. After purchasing the G4 you are easily able to adapt spare parts such as sidewalls, headboards and all high wear areas that are monitored and replaceable. With onsite repair capabilities, what was once impossible is now possible.

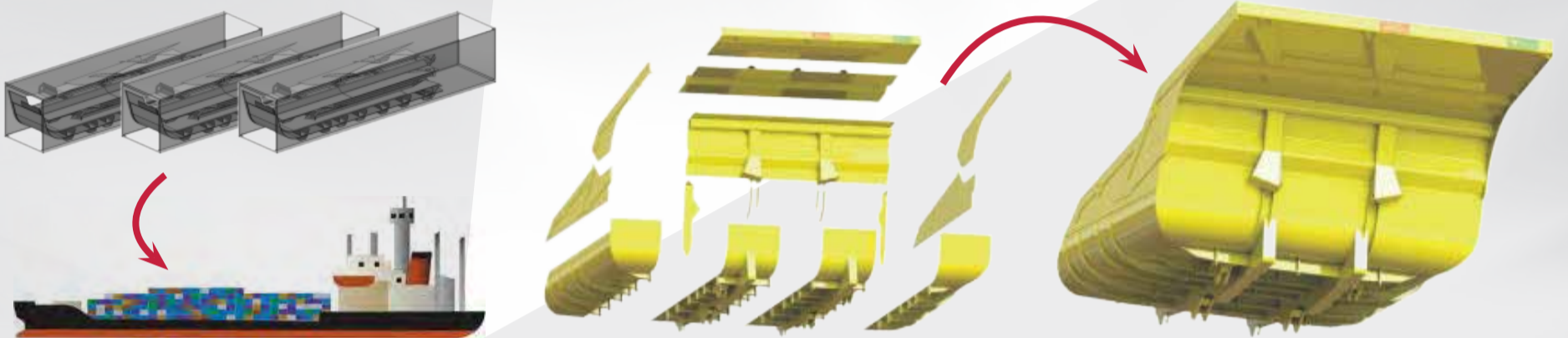
DEMYSTIFY REPAIR COSTS
PLANNED COMPONENT CHANGE OUT
BUDGET YOUR MAINTENANCE
PREDICTABILITY & CERTAINTY

- ▶ 25% SAVINGS ON DOWNTIME
- ▶ MASSIVE REDUCTIONS IN OWNERSHIP COSTS AND REPAIR COSTS
- ▶ MAJOR ONSITE REPAIR CAPABILITIES MEANING LESS COMMUNITY IMPACTS THROUGH COMPLEX AND EXPENSIVE LOGISTICS MOVEMENTS FROM SITE TO WORKSHOP FOR REPAIRS AND OVERHAULS.



PH 0455 552 200

TRANSPORT AND LOGISTICS: MINETEC **EASY TRAY** CONFIGURATION

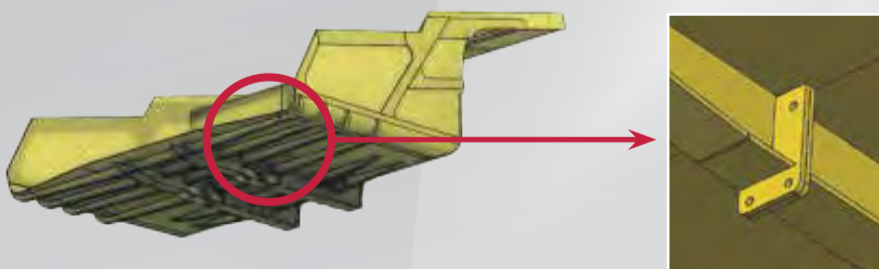


ANGLED SIDEWALLS FOR ACCELERATION OF MATERIAL WHILE UNLOADING



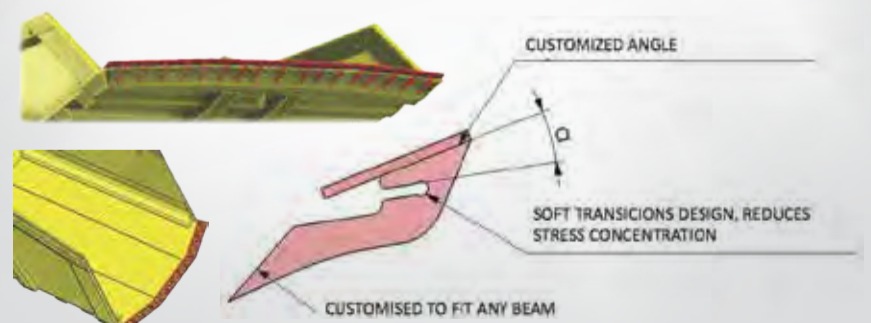
- ▶ REDUCES CARRY BACK
- ▶ CURVED FLOOR-SIDEWALL SECTIONS
- ▶ REDUCES CARRY BACK ISSUES

INNOVATIVE DESIGN FEATURES



- ▶ G4 DESIGN REPLACES UNDERFLOOR BOLSTER BEAMS FOR 'T' DESIGN BEAMS
- ▶ REDUCES CONCENTRATION OF STRESS.

OPTIONAL MINETEC DUCK TAIL DESIGN





AS WE KICK OFF OUR FIRST EDITION OF THE YEAR, WE CAN'T HELP BUT FEEL THAT 2019 IS GOING TO BE THE BEST YEAR EVER!

Things are looking promising for our industry. Late last year the NSW Minerals Council released research showing that there are mining projects in the planning pipeline worth billions in investment and thousands of jobs for NSW. Let's hope they all receive approval.

There's also plenty of job opportunities for skilled workers across all mining sectors in the Hunter region, and as more mines receive approval for tonnage increases the demand is likely to increase.

On the downside, it's likely that we will also be seeing an increase in electricity prices this year, with electricity futures indicating a resurgence to near record wholesale prices. Let's hope that after the election the

government will get their act together and finally fix the energy problem. (Or at least agree to fix it!)

WITH THE ELECTION LOOMING WE WANTED TO GIVE YOU ALL THE OPPORTUNITY TO HEAR FROM SOME LOCAL CANDIDATES. IF YOU DON'T TAKE AN INTEREST AND MAKE YOUR VOTE COUNT, THEN YOU CAN ONLY BLAME YOURSELF IF WE END UP WITH THE WRONG PERSON FOR THE JOB. JUST LOOK AT THE US ELECTIONS!

We've already broken most of our New Year resolutions, eating well went out the window after we gorged ourselves at Cessnock's new venue, Vincent St Kitchen & Bar, and we drank way too much at Tamworth's Country Music Festival.

But the one resolution we will never break is our promise that this magazine will always support the mining industry and the people that work and live in the Hunter. Happy New Year readers!

@THE COALFACE

Publisher
Shane Davey
shane@thecoalface.net.au
0408 759 088

Editor
Rebecca Connolly
rebecca@thecoalface.net.au
0408 769 699

General Manager
Steven Reynolds
steve@thecoalface.net.au
0431 734 443

Design
CarrollMel Design

Advertising Enquiries
Shane: 0408 759 088
Steve: 0431 734 443

@ The Coalface
14B/169 John Street
Singleton NSW 2330
www.thecoalface.net.au

MAKE YOUR VOTE COUNT

NSWMC CALLS ON ALL POLITICAL PARTIES TO SUPPORT HUNTER MINING AS WE HEAD INTO THE POLLS NEXT MONTH TO VOTE AT THE NSW STATE ELECTION.

The election is expected to be close and the votes of people like you in mining towns like Singleton, and Muswellbrook could decide the election outcome.

It's a pretty good reason why our politicians should open their ears to listen to Hunter mining families and local businesses and provide support to build strong and growing mining communities.

FOR EXAMPLE, MINING TOWNS NEED MORE FUNDING THROUGH THE RESOURCES FOR REGIONS PROGRAM.

This important NSW Government program returns back to mining regions some of the money generated in mining royalties. The funding is then used by local councils to help build better roads

and other local infrastructure. The program has delivered around \$270 million in funding for nearly 50 projects across NSW, but more is needed to ensure mining towns are getting their fair share.

OUR POLITICAL PARTIES ALSO NEED TO SPECIFICALLY PROVIDE SUPPORT FOR THE HUNTER COAL MINING SECTOR.

Coal is our State's largest export industry, providing over 20,000 direct jobs and helping keep the lights on across NSW and Australia. Those seeking to represent NSW coal mining communities need to be strong and effective supporters of coal's role in our economy and in our energy mix.

The NSW Minerals Council is monitoring the policies the



Stephen Galilee
CEO, NSW Minerals Council

candidates and parties and we will be working to ensure NSW miners and their families are informed of the various choices available to them before they vote. So, don't forget - your vote is important.

If you want to make sure you have the best updates from us, you can sign up and help make the voice of mining heard at www.voiceformining.com.au.

Stephen Galilee, CEO, NSW Minerals Council

MORGAN ENGINEERING

www.morganengineering.com.au

> **EXPERIENCE** > **QUALITY** > **RELIABILITY**

P: 02 6572 2032 F: 02 6572 2320 E: administration@morganengineering.com.au

- On-Site Mobile Line Boring & Field Services
- Mobile Milling
- Liquid Nitrogen Service & Supplies
- Weld Reclamation
- CNC Machining
- Medium Fabrication
- Caterpillar Service Exchange Components



Coal Goals

THE HON. DON HARWIN,
MINISTER FOR RESOURCES

THERE HAS BEEN PLENTY OF DISCUSSION IN THE MEDIA RECENTLY OVER THE FUTURE OF COAL MINING IN THE HUNTER.

As the State's energy mix changes, and following AGL's announcement that Liddell will close in 2022, many are saying the need for Hunter Coal will decrease.

However, even as we look to diversify our sources of electricity, coal will continue to be a major contributor to energy security for NSW.

And coal's most significant contribution to the economy comes from exports. The NSW Government is committed to ensuring the export market for Hunter Coal continues to grow.

More than 85 per cent of all coal mined in NSW is exported. And demand

internationally for our coal is growing.

Thermal coal consumption in emerging economies such as Southeast Asia and India is projected to more than double by 2040. This forecast is underpinned by both independent and expert industry analysis which shows Asian thermal coal demand rising by over 400 million tonnes between now and 2030.

With Hunter Coal recognised as some of the best on earth, we can confidently say that mining in the Hunter Valley will continue for many years to come.

It's also important to remember that

coal contributes over \$22 billion (\$20 billion for 17/18) to the NSW economy in export earnings.

The coal industry also pays to the State \$1.8 billion in royalties per annum, which are used to fund essential services like hospitals, schools and roads across NSW. That's the equivalent of some 11 rural hospitals or over 20,000 nurses.

However, all of this would be at risk under a State Labor Government, who have threatened to cancel projects and destroy jobs and investment. Their allies in the

Greens have even said they would shut down the entire NSW coal industry, decimating regional communities and hard-working mining families.

The reality is that a booming economy, riding on the back of the continued success of the NSW mining industry, means a better life for everyone in NSW.

And there is no doubt mining is one of the key drivers to ensure NSW remains the most successful state in Australia - now and into the future.

The Hon. Don Harwin, Minister for Resources

SWEET!

WIN!

THANKS TO CHEF NICK AT CAFÉ LA LUNA, WE ARE GIVING AWAY A SCRUMPTIOUS CAKE OF YOUR CHOICE.

Choose any cake from their delectable range, including Malteser, Strawberries & Cream, Chocolate Mud or more. Share with the guys in the crib room or keep it all for yourself!

FOR YOUR CHANCE TO WIN, SIMPLY SMS: CAFÉ LA LUNA, YOUR NAME AND YOUR EMAIL ADDRESS TO 0438 474 290.

Limit of one entry per person.
LTPM/19/04020

**CAFÉ LA LUNA | PH 02 6543 3594
SHOP 5, 168 BRIDGE STREET, MUSWELLBROOK**

BY SUBMITTING AN ENTRY, YOU CONSENT TO THE USE OF YOUR CONTACT DETAILS FOR PROMOTIONAL AND MARKETING PURPOSES.



APLUS CONTRACTING & POLY WELDING

www.apluscontracting.com.au

EXPERTS IN POLY WELDING

CIVIL EARTHMOVING, TRAFFIC MANAGEMENT AND SPECIALISED SERVICES

PH: 4938 3425 ON CALL 24 HOURS / 7 DAYS

- Poly Welding Equipment to 800mm
- Longreach excavator equipped with GPS
- Specialised Silt Fencing Installation Machine
- Civil Works including Concreting
- Grounds Maintenance Fleet
- Skid Steers, Backhoes, Excavators, Watercarts, and Graders all with attachments
- Traffic Management Services



We support...



NATIONAL BREAST CANCER FOUNDATION
FUNDING RESEARCH FOR PREVENTION AND CURE



MOUNT PLEASANT SEES FIRST COAL



MACH ENERGY AUSTRALIA COMMENCED CONSTRUCTION OF THE MOUNT PLEASANT OPERATION IN LATE 2016 AND AT LAST THE FIRST SHIPMENTS ARE READY TO ROLL.

The project construction stage is nearing completion with the majority of mine infrastructure now in use. Further construction works on the coal handling preparation plant are expected to be complete mid-year. MACH Energy Managing Director Ferdian Purnamasidi said construction of the initial bypass stage of the processing facility is now complete.

@ THE COALFACE CONGRATULATES ALL INVOLVED AND THE TIRELESS HARD WORK UNDERTAKEN TO BRING A WORLD CLASS MINING OPERATION TO FRUITION IN THE HUNTER. IT'S GREAT TO SEE SO MANY NEW JOBS AND CONTRACTS FOR LOCAL COMPANIES THAT ALL COMBINE TO ADD TO THE PROSPERITY OF THE UPPER HUNTER, NSW AND IN PARTICULAR MUSWELLBROOK. GOOD LUCK AS A BRIGHT FUTURE INEVITABLY UNFOLDS.

Mr Purnamasidi announced in December that Mount Pleasant successfully produced first bypass coal through the facility. "Our first coal has been supplied locally for domestic use and we expect export sales to follow soon after. I am pleased with the progress and thank all involved for their hard work and dedication to the operation to ensure we reach this very important milestone," said Mr Purnamasidi.

Overall, Mount Pleasant hosts resources of 1.1 billion tonnes of coal and 667 million tonnes of recoverable reserves. The operation is fully consented up to the targeted production rate of 10.5 million tonnes per annum ROM coal. It enjoys one of the lowest strip ratios in Australia, with all-in FOB cash costs forecast to place Mount Pleasant in the first quartile of the global thermal coal cost curve.



GEARED UP FOR FUN!
BONUS BACKPACK AND CAP
 plus **GW GEARWRENCH TOOLSET** with every NEW Kawasaki Fun Bike!
OVER \$300 VALUE
1.99%
 Kawasaki Insurances, Kawasaki Motors Finance, Kawasaki GENUINE ACCESSORIES, huntervalleymotorsports.com.au

HUNTER VALLEY MOTORSPO RTS // **KTM Kawasaki** PH: 02 4932 6800
www.huntervalleymotorsports.com.au 387 NEW ENGLAND HWY RUTHERFORD NSW 2320

The Clubby
 CLUB HOUSE HOTEL
 Singleton's home of sport, beer, betting, tucker, drive through and good times!

Tell 'em **SOL** sent ya!
 If you can't find us... try harder.

LOCAL LIQUOR
 THERE'S ONE NEAR YOU



A GREAT PROJECT DESERVES A GREEN LIGHT

I-R: MICHAEL ALEXANDER PEABODY OPERATIONS MANAGER, SCOTT BRITTITFFE PRESIDENT WAMBO LODGE, GARY WILLS OPERATIONS MANAGER GLENCORE.

impacts such as dust and noise and Scott told us he could understand the concerns.

“We are under heavy restricted conditions in relation to dust and noise and we understand that these are issues that can affect the community, which we understand and will minimize, but we need this extension and this approval to go forward into the future for our next generation of coal miners.”

“BEING AN OPERATOR MYSELF AT WAMBO, I CAN TELL YOU FIRST HAND THAT WHEN WE HAVE WINDY AND DRY DAYS WE PULL UP. NONE OF US WANT IT TO IMPACT THE COMMUNITY. OUR FAMILIES LIVE IN THE COMMUNITY TOO,” SCOTT ADDED.

Prior to the PAC hearing, the IPC review found ‘that the project has merit if it can satisfactorily and genuinely address the various recommendations contained within this review report.’

@ The Coalface has seen all the hard work done to make this extension work. This is a project that must get the green light. It’s much lighter on the development and impacts side of things and should be a great fit for those that want lighter mine development. It’s smack bang in the middle of existing operations and brings a bright future to local families and the community. Let’s all hope that common sense prevails.

THE MUCH-ANTICIPATED EXTENSION OF THE JOINT VENTURE BETWEEN GLENCORE AND PEABODY FOR THE UNITED WAMBO COAL MINE, WENT BEFORE THE PLANNING ASSESSMENT COMMITTEE ON FEBRUARY 6.

better outcome in the final mine design for the community. The modifications will see approximately 150M Run-Of-Mine tonnes recovered.

Gary Wills, Operations Manager Glencore said they were there to present to the PAC all the benefits of the extension, not the least the significant economic benefit it would bring to the region and the state.

“THIS PROJECT ADDS OVER \$820 MILLION IN GOVERNMENT ROYALTIES AND PROVIDES SIGNIFICANT ECONOMIC BENEFIT TO BOTH THE REGION AND THE STATE TO THE TUNE OF \$2.1 BILLION DOLLARS IN GROSS REGIONAL PRODUCT AND \$3 BILLION IN STATE PRODUCT,” GARY SAID.

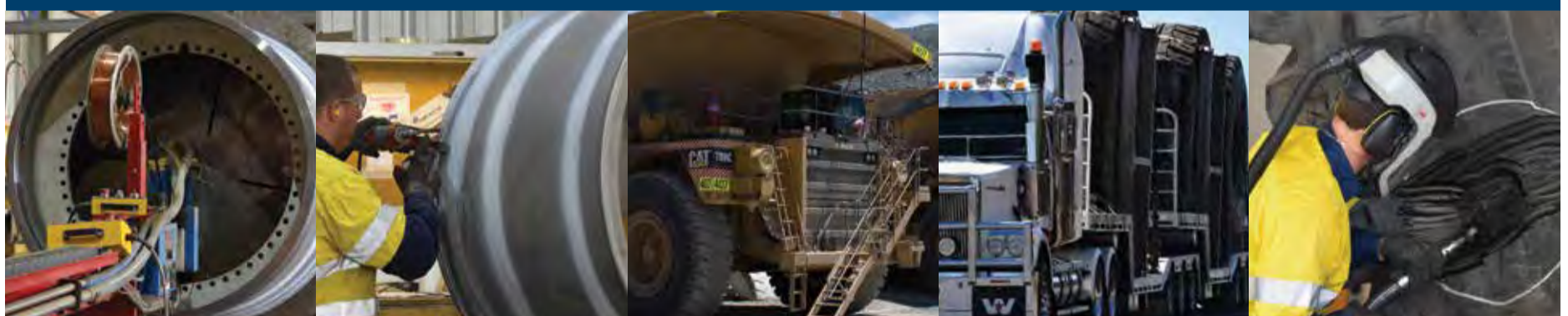
This extension will add another 23 years to the life of the mine and guarantee the employment of the 250 current employees. Plus, once it’s up and running it will employ another 250 workers and a further 120 construction workers during the development period.

Scott Brittiffe, President Wambo Lodge was there on the day to show his support. “If we don’t get approval for the extension the fallout will be massive. Not just for all those workers mentioned, but for the Hunter region. Jobs, community services, schools, and local businesses will all miss out. It will certainly damage Singleton and the outlying areas,” Scott said.

The main opposition to the extension is because of the environmental

The PAC met in Singleton recently to hear from both those for and those opposed to the new joint venture. The project will see the utilisation of the existing Wambo infrastructure, with minimal additional disturbance and no increase in approved annual throughput of the Coal Handling Preparation Plant and rail loop. It allows for a more modern approval and the opportunity to provide a

WE’RE OTR. WHERE EXPERIENCE COUNTS.



WHEEL & RIM REPAIR

MAG PARTICLE TESTING

ONSITE INSPECTIONS

GATE TO GATE LOGISTICS

SPECIALIST TYRE REPAIR

EXPERTS IN MINING TYRE REPAIR

visit tyredocor.com.au or call 1800 897 336

Westpac Rescue Helicopter Service



TYRE DOCTOR

IN THE NEWS...

NEWS ANNOUNCER JESSICA ROUSE FROM RADIO HUNTER VALLEY HAS THE LATEST NEWS STORIES



YANCOAL GROWS

After achieving record coal production in 2018, Yancoal is looking to go even bigger this year. In the company's latest quarterly release, CEO Reinhold Schmidt said maximising production from the company's underground and open cut mines had allowed it to meet increasing demand for "higher quality" thermal coal. This includes a potential six million tonnes a year underground development at Mount Thorley Warkworth, which completed pre-feasibility seam drilling at the end of last year.

WATER WORKS

Water carting has started to Murrurundi to top up supply. The levels at Murrurundi Dam are now too low, it's at 5 per cent usable capacity. Upper Hunter Shire Council is carting water four times a day from Scone to the pre-treatment lagoon and the majority of the town's water is still coming from the emergency water bore and the Page River gallery. Murrurundi has been on level six water restrictions since July 2018 due to the devastating drought. It comes as another blow after algae was found in the dam which was yet another blow to the town. The water tested positive for blue green algae at level 3.

TOP COP

Superintendent Chad Gillies has been permanently appointed to the role with the Hunter Valley Police District. Superintendent Gillies has spent the past five years in Goulburn as a crime manager and has been in the force for 23 years. "Traffic will always be a huge focus and that's been one of my messages since I arrived. But I'm really interested in all the rural crime work being done now. Domestic violence will always be front and centre of what I'm doing, that has a huge impact on all of our families in the area," said Superintendent Gillies. Meantime eight additional highway patrol officers are now based out of Muswellbrook to cover the Upper Hunter area. Northern Region Traffic Tactician, Chief Inspector Amanda Calder said the Upper Hunter will now boast a 22 strong team of highway patrol officers.

COWGIRL CLEANS UP

Upper Hunter athletes scooped the pool at the ABCRA National Finals in Tamworth. Blandford's Sophie Edmonds, just 11-years-old, not only won the National Finals competition but for the 2018 season was crowned the Australian Champion Junior All Round Cowgirl and the Australian Champion Junior Barrel Racer. Sophie is now a back to back title holder after taking out the same two championship titles last year. "It feels pretty good to do it again this year, I was happy with how my year went," she said. Meantime Singleton's Cody Heffernan was crowned the 2018 Bull Riding Champion for 2018.

BRUMBY CULL

The brumby cull at Singleton Army Base was "substantially completed" before Christmas. The Department of Defence undertook the cull of 150 wild brumbies at the base because they believed that they were environmental pests causing erosion and damaging vegetation. Defence also noted the drought as a reason for the cull because the brumbies didn't have sufficient water or food. A number of community groups including the Hunter Valley Brumby Association as well as concerned locals wanted the cull taken off the table, but despite a courageous effort it wasn't to be.

HOLE IN ONE

The Muswellbrook Golf Course has shot their best hole in one yet. They've received a \$1 million boost from the NSW Government so they can go ahead with a more than \$1.6 million project that includes new fencing, an irrigation system and new squash courts. Daryl Egan, the CEO of Muswellbrook Golf Club said they're excited to get a lot of work underway. "Basically, from Singleton right up to Tamworth this is the only 18-hole course so having the irrigation, having the other facilities in place, this will help us with tourism as well not only catering for our members and the visiting players but also a lot of tourism," he said.

RUSH PULLS OUT

Martin Rush pulled out of the election race in January as the Country Labor candidate for the Upper Hunter. It comes after an article was published in the Sydney Morning Herald outlining an alleged incident of an assault involving the Muswellbrook Mayor. Martin Rush released a statement "categorically denying" that allegation saying he had made the decision to ask the Party to find another candidate. "At the centre of the complaint is an allegation of an assault. I categorically deny that allegation. People have the absolute right to make a complaint and if they feel aggrieved about an issue they should be encouraged to do so. It helps no one to prematurely publish anonymous allegations. It attacks at all the fundamentals of fairness our society holds as valuable."

Ready For Rent
EVAPORATORS

Ready For Rent PUMP, GENERATOR & COMPRESSOR SOLUTIONS

4 Balbu Blose, Beresfield NSW

1800 737 687

www.nationalpump.com.au



**Hunter
Liftrucks**

IS NOW

**MLA
HUNTER**

YOUR LOCAL FORKLIFT SPECIALISTS

NEW AND USED SALES • HIRE • PARTS • SERVICE



www.hunterlift.com.au

NEWCASTLE
02 4967 4622

 **MITSUBISHI
FORKLIFT TRUCKS**
53 Rural Drive Sandgate, 2304

CENTRAL COAST
0402 087 831

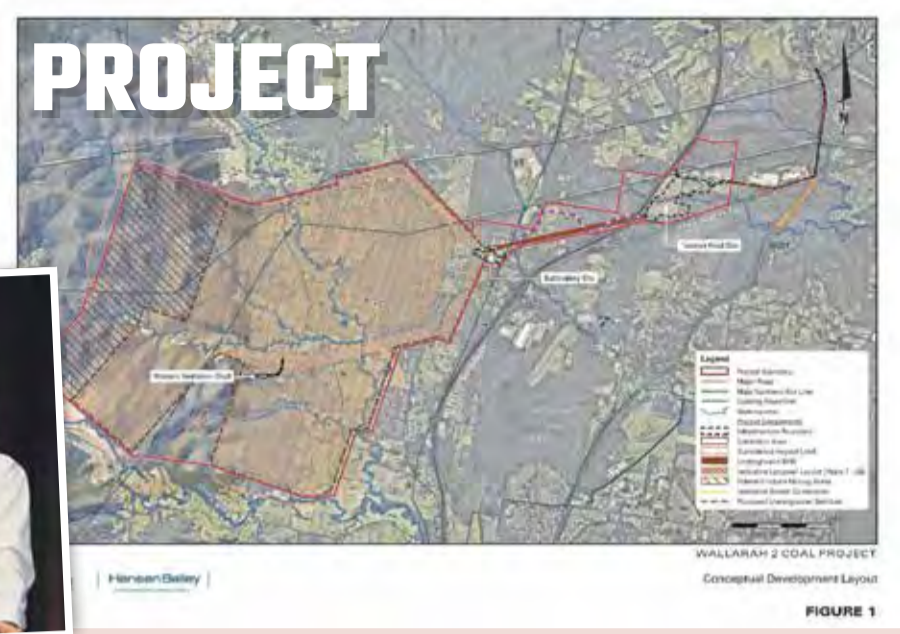
OPINION **WALLARAH 2 COAL PROJECT**

PROJECT

CONGRATULATIONS TO THE EAGERLY ANTICIPATED WALLARAH 2 COAL PROJECT WHICH RECEIVED ITS FEDERAL EPBC APPROVAL ON 18 JANUARY 2019 AFTER IT WAS SIGNED BY FEDERAL MINISTER FOR THE ENVIRONMENT.

This approval is another significant tick for Wallarah 2 located Northwest of Wyong on the Central Coast. In line with community expectations the Commonwealth Department of Environment and Energy and the Independent Expert Scientific Committee on Coal Seam Gas and Large Mining Development (IESC) reviewed the key potential impacts including those on water resources. Together the additional scrutiny and resultant advice contained within this approval, enhances the stringent conditions already dictated by the NSW Planning Assessment Commission Approval of January 2018. This project will provide a significant boost to the Central Coast Region via an \$800m plus initial capital investment and the creation of more than 300 full time jobs together with significant contractor and business opportunities. Wallarah 2 has a target

of 70% local employment from the Central Coast Region (Gosford, Wyong and Lake Macquarie), a target of 10% indigenous employment, and a commitment to implement a world class cleanskin miners program supported by experienced Mineworkers and Statutory position holders. However, unfortunately Wallarah 2 is again under threat, this time from what the Union perceives as a politically motivated campaign by members of NSW Labor who have signalled their intention to pass legislation in the form of the Wyong Special Area (Protection) Bill 2018. **THIS BILL HAS ALREADY BEEN TABLED IN PARLIAMENT BY NSW LABOR IN OPPOSITION THREE TIMES WITHOUT SUCCESS.**



The legislation is aimed directly at the Wallarah 2 Coal Project and retrospectively removes all legitimate approvals, ignoring the mountains of scientific evidence-based assessments, reviews and specialist studies which support its credentials. Local member for Wyong David Harris and Shadow Minister for Industry and Resources Adam Searle are the champions of the Bill to kill Wallarah 2, and with its hundreds of mining jobs and multiple millions in royalties, taxes and other benefits which flow from such a regionally important project.

THE UNION IS ASTONISHED THAT A POTENTIAL NSW LABOR GOVERNMENT IS WILLING TO IGNORE THE SCIENCE WHICH SUPPORTS THE WALLARAH 2 EXISTING APPROVALS AND THE COLD HARD FACT THAT THE CENTRAL COAST IS CRYING OUT FOR JOBS AND OPPORTUNITY. Clause 6 of the Bill provides that a planning approval is not to be given under the Environmental Planning and Assessment Act 1979 in relation to development for the purposes of prospecting and mining activities on land in the Wyong special area and cancels any

such planning approval already given. As for the facts which surround NSW Labor and Wallarah 2, the existing tenements were won via a competitive tender process run by a Labor Government. The then NSW Premier Bob Carr wrote to the proponents congratulating them and stating, "I look forward to a fruitful partnership between Coal Operations Australia Limited, the other members of The Wyong Areas Coal Joint Venture and the Government of NSW." (Bob Carr Premier of NSW, 6 November 1995). **Peter Jordan - CFMEU District President**

Austin Two-Piece Excavator Bucket

DEDICATED "TWO PIECE" DESIGN

Maximise your productivity with a specifically designed solution, engineered to suit your individual site

Excavator bucket consisting of defined reusable upper and consumable lower structures

- Reusable upper structure
- Consumable lower structure
- Full high tensile plate construction
- Safety and stored energy considerations



FOR MORE INFORMATION CONTACT: Adam Dever +61 2 6541 0111 www.austineng.com

HELP THE HUNTER



DO YOU WANT TO HELP THE UPPER HUNTER BE A BETTER PLACE TO LIVE?

The Upper Hunter Mining Dialogue is looking for community representatives who are interested in helping the Dialogue address the cumulative impacts of mining through industry and community working together.

There are a number of community representative positions available on the Dialogue's Joint Working Groups. The working groups meet quarterly and play an important role by helping the Dialogue choose and implement its strategies and activities including projects aimed at addressing mining impacts in areas such as air and water quality, land management and rehabilitation and planning the Hunter of the future.

THE DIALOGUE'S CHAIRMAN DAVE O'BRIEN SAID THE DIALOGUE HAS HAD MAJOR SUCCESSES OVER THE PAST FEW YEARS AND IT IS IMPORTANT THAT IT CONTINUES TO STAY RELEVANT AND FOCUSED ON THE ISSUES PRIORITISED BY THE COMMUNITY AND INDUSTRY.

"It is very important the voice of the community is fully represented on the Dialogue, so we are inviting community members for expressions of interest in joining our working groups."

Community members can express their interest in joining the Dialogue at information@nswmining.com.au or for more information on the Upper Hunter Mining Dialogue see the website at miningdialogue.com.au

Applications close February 28.



PONTOON PUMPS

1800 813 677
www.truflopumps.com.au



**TAILINGS RETURN • WATER EVAPORATION • LEACHATE PONDS
GENERAL DEWATERING • FIRE WATER SUPPLY**

TOP GONG FOR A TOP BLOKE

AT THE RECENT NATIONAL DISTRIBUTORSHIP AWARDS, HUNTER VALLEY HYDRAULINK PROUDLY WON THE CATEGORY FOR HIGHEST SALES GROWTH.



When Coalface Magazine first launched some eight years ago the very first person to back us was Shane Goodwin, the Owner/ Manager of the Singleton branch of Hydraulink. Throughout the years he has remained a good friend and supporter and one of the hardest working blokes around. So we were thrilled to hear of his business and team's recent recognition.

Shane was pleasantly surprised with the achievement. "We have been quite busy for the past 2 years now and continue to grow our client base through high quality service. I am lucky to be surrounded by loyal and

WE LOVE HEARING ABOUT HARD FOUGHT LOCAL SUCCESS STORIES. WELL DONE MATE, WE ARE SURE THERE IS PLENTY MORE SUCCESS TO COME. IF YOU WANT TO GIVE SHANE AND HIS TEAM A CALL YOU WILL FIND THAT THEY ARE 'BEST UNDER PRESSURE'.

dedicated staff who have excelled in their customer relations," Shane told us. "This year is looking bright as well as the strong industry market indicates." Hunter Valley Hydraulink out performed the other 83 branches throughout Australia to take out the award.

EQUIPMENT READY FOR

HIRE



Excavator Mounted Dredge Pumps



Silt Separators



Pumpsets Skids, Trailers & Pontoons

FREECALL
1300 455 195
stratquip.com.au



WIN!

COOL CRIB

YOU ARE GUARANTEED TO ADD A LITTLE SWAG TO YOUR SHIFT WITH OUR INSULATED PVC CRIB BAG.



Made by Rugged Xtremes and in classic Coalface yellow, we reckon our crib bag will be as sought after as a Louis Vuitton.

FOR YOUR CHANCE TO WIN, SIMPLY SMS: COOL CRIB, YOUR NAME, AND YOUR EMAIL ADDRESS TO 0438 474 290.

Limit of one entry per person. LTPM/19/04020

By submitting an entry, you consent to the use of your contact details for promotional and marketing purposes.

PROSPECT RECRUITMENT

Trusted and professional recruitment services to the mining, resources and energy sectors



- Process Outsourcing Solutions
- Search & Selection
- Assessment Centres
- Outplacement Services
- HR Consulting
- Psychometric Profiling & Assessment



PROSPECT GROUP

Prospect Group is a long established and respected Australian provider of recruitment solutions and environmental monitoring systems

Prospect Group incorporates Prospect Recruitment and Prospect Environmental

To learn more about us please visit: www.prospectgroup.com.au

Brisbane Unit 2, 601 Nudgee Rd, Nundah QLD 4012 Maitland Unit 17, 420 High St, Maitland NSW, 2320 Townsville Suite 11, 31-33 Flemming St, Aitkenvale QLD 4814. E info@prospectgroup.com.au

PUBLISHERS OPINION – ELECTION TIME

WITH BOTH A STATE AND FEDERAL ELECTION UPON US, ONE CAN ONLY WONDER WHAT THE POLITICAL LANDSCAPE WILL LOOK LIKE IN A FEW MONTHS TIME.

Controversy has been the defining debate at all levels of politics in recent times and the general public is sick to death of it. We the public are crying out for our leaders to do just that – Lead.

As a democracy, it is the overwhelming will of the people that must guide the road map to the future. We the public simply aren't interested in politicians personal agendas or grudges against opponents. Get over it and get on with the job. We want to hear your ideas, visions and solutions for the future, not what you think the opposition is doing wrong. Run your own race and the rest will take care of itself.

SENSIBLE DEBATE AROUND SENSITIVE ISSUES MUST BE OF THE HIGHEST IMPORTANCE. AT THE TOP OF THIS LIST IS THE ENERGY DEBATE AND OUR COAL INDUSTRY. LOCALLY, INDUSTRY JOBS AND STABILITY ARE RIGHT UP THERE TOO. SENSIBLE BALANCED AND PROGRESSIVE GOVERNMENT IS THE ONLY ANSWER.

Energy has become the political football of our times and while no reasonably minded person would deny the worth of the environmental issues at hand, the reality of society is that energy security and affordability are of equal importance.

The demonisation of our industry, what it produces and its effects, is

far too often based on historical and outdated practices, technology and opinions. Big city ignorance around how society runs is almost laughable looking at it from here where we sit in The Hunter.

Despite the conveniently ignorant and uniformed opinions of there being an easy and quick transition to renewables, it is in fact a very long-term generational transition, a transition that will most likely always involve coal. That transition will take generations. The evolution of our energy mix is happening, but it will take as long as it takes. So in the meantime...

Commit to and build a bloody HELE power station here in the Hunter.

Commit the government to more sensible education and promotion of how and why society needs our resources and people to function – not to mention fund through royalties. Work towards ending the divisions between different opinions and bring those differences closer together.

Here in The Hunter we want to see our mining industry thrive and our economies diversify at the same time. If our politicians could focus on that while improving our communities, education and health care, then they will probably stay elected for a very long time.



TRADECORE INDUSTRIES

MINING MAINTENANCE & LV FLEET MANAGEMENT

PH (02) 6572 4811 www.tradecore.net.au

MAJOR CAPABILITY & EXPERIENCE DELIVERED WITH FAMILY VALUES

Tradecore are your one stop shop for complete maintenance services:

- Earthmoving Equipment repairs
- High Voltage and Auto electrical Services
- Light vehicle Workshops in Singleton and Muswellbrook to carry out: Repairs/Service, Fleet management and fitting out to mine specs
- Commercial 4x4 Light vehicle and Truck Hire
- Labour hire
- Asset management
- Fabrication and Welding Repairs

**SINGLETON 16 MAGPIE ST
MUSWELLBROOK 10B CARRAMERE RD**

AT TITAN WE DON'T COMPROMISE NOR SHOULD YOU

Whether we're supplying or servicing your tyres, wheels, tracks or axles you can rely on Titan for the most innovative and cost-effective solution for your business allowing you to fully concentrate on what you do best, moving, growing, and succeeding.



UNDERCARRIAGE

Titan Australia is the distributor and service support provider of ITM undercarriage products, a worldwide leader in the design and manufacture of components and complete undercarriage solutions.

ITM, a 100% owned subsidiary of Titan International, is a world leading specialist designer and manufacturer of undercarriage components, covering the entire range of modern crawler machine applications in the construction, mining, utility, forestry, road building and agricultural industries. Titan Australia provide OE & Aftermarket specialist sales & service support for ITM products across Australia.

ITM is the supplier of choice to many of the worlds OEM's in the field of tracked machines including Atlas Copco, Bucyrus, Doosan, JCB, John Deere, Hitachi, Hyundai, Komatsu, Liebherr, Sandvik, Terex, Volvo and Wirtgen Group.

Our repair facilities located across Australia in Perth, WA; Emerald, QLD; and Muswellbrook, NSW, allow our customers easy access for repairs and maintenance. Each track shop features a range of specialised machinery designed to carry out a broad range of undercarriage services. This combined with the expertise of our service teams, ensures our customers undercarriage needs are met to the highest standards.



SERVICES & REPAIRS

UNDERCARRIAGE SERVICE AND REPAIRS

Titan provides complete inspection, repair and certification services for all customer undercarriage requirements from our workshops at the following locations...

- Perth - Western Australia
- Emerald - Queensland
- Muswellbrook - NSW

Other Services include, major track frame re-build, idler & roller exchange as well as C.T.S. Inspections.

WHEEL SERVICE AND REPAIRS

The wheel is the most integral part of a ground vehicle. Every aspect of design and development is unique for each application.

By working with our customers we continually improve current designs and research technology to develop more effective products.

Our in-house wheel and rim inspection, repair and certification services are performed by our fully qualified staff in accordance with AS:4457.1: 2007 and related standards in Western Australia (WA), Queensland (QLD), New South Wales (NSW) and Victoria (VIC).



WHEELS & TYRES

Titan Wheels Australia is the market leader in the design, development and manufacture of wheels to the 'off-highway' industry. Supplying the world's most respected original equipment manufacturers like Caterpillar, Volvo, Komatsu and Liebherr means that our product, service and delivery must consistently meet the high standards set by these companies.

In addition, Titan Australia designs, develops and manufactures wheels for the agricultural, construction and mining industries. From earthmoving equipment, trucks and tractors to forklift and industrial vehicles, no mobile tyre problem is too big or too challenging. We will get your vehicles on the move again fast, minimizing downtime and maximizing the return on your tyre investments. Titan offers a complete range of wheels, from 6" through to 63" in diameter, including fixed welded wheels, adjustable bolted tractor wheels, demountable (spider mount) rim options and clip-on dual applications.

Manufacturing capabilities are backed by the best wheel engineers, Customer Service Department and dedicated sales team all ensuring that components are manufactured to the highest standards and delivered on time. As a customer-focused and process-oriented company, no other wheel manufacturer can match our experience, capability, quality and design. Environmental accreditation along with attention to waste control is a reflection of our company values.

Who's GOT YOUR VOTE?



THREE UPPER HUNTER ELECTORATE CANDIDATES FOR THE UPCOMING STATE ELECTION (AND BIG COALFACE FANS) CONTACTED US TO SHARE THEIR VIEWS. BEING THE INVESTIGATIVE MAGAZINE THAT WE ARE, WE ASKED THEM SOME HARD HITTING QUESTIONS ABOUT HOW THEY WOULD PROMOTE AND PROTECT OUR INDUSTRY IF ELECTED.



LEE WATTS

– SHOOTERS FISHERS FARMERS PARTY

I don't believe that N-S-W stands for Newcastle-Sydney-Wollongong, but that is where the major parties spend the money we generate in the Upper Hunter. We are the powerhouse of the state economy, but we have to sit by and watch billion-dollar stadiums being built in Sydney while they keep promising us bypasses and the basics.

I like both major parties equally, which is to say not much! I've lived here for more than 40 years, I've seen both major parties ignore this electorate. I've also been a Councillor, Deputy Mayor and Mayor for 14 years, I know how the system works and I know every Council in this electorate struggles to get money from the state government.

The Shooters, Fishers and Farmers party hold the balance of power in the Upper House and have the power to make things happen. The people of Orange changed the way they voted at the last election and made Phil Donato from the SFF their representative and now they have dramatically more funding for their electorate.

By voting differently at the next election we can do the same for this electorate. I was the only candidate to stand beside the workers of Drayton South, because with me Watt You See is Watt You Get. I won't be directing preferences to anyone. So, when you vote for me, on March 23 you can just Vote 1 and You're Done.



MICHAEL JOHNSEN

– NATIONAL PARTY

Over the past four years I've worked hard to earn your respect and I'm proud to have achieved real results for our communities in the Upper Hunter Electorate. My role as your local MP is listening, understanding and delivering for our community's needs.

I'm running for re-election because I want to continue to deliver those vital services – to our schools, improved health services and keeping our local economies strong – those things that make a real difference in people's lives, and provide opportunities for our local families.

Our Upper Hunter Electorate is, as I often remind people, home to world class wines, mines, equines and bovines, and I will continue to be an advocate for those industries that advantage our communities.

As a proud supporter of the mining industry, now and into the future, I will continue to support the industry and the many who benefit from it, not just those who work in the industry, but also our local businesses and communities who rely on the important contribution that your industry provides to us all.

MEL DAGG

– LABOUR PARTY

Like most people who grew up in the coalfields, many of my relatives worked in the coal industry. My husband Josh is an operator at Rix's Creek and is the current Lodge Secretary. My dad was a fitter at Bulga for 27 years and he was Lodge Secretary for a period also. It was Dad's belief in fairness and fighting for the miners that inspired me to join the Labor Party at age 19.

I'm just old enough to remember the days of regular strike action, but more importantly I remember the impact it had on my family and mining communities. This instilled in me the importance of ensuring workers and their families were treated with respect, with decent pay and conditions entrenched in the industry.

That respect and decency is being eaten away, driven by a push for an increasingly casualised, insecure workforce, who are often paid less than their permanent counterparts doing the same job. This places pressure on families, workers and workplace safety procedures, putting lives at risk.

The region contributes millions to the State's economy, propping up Government budgets, yet it is represented by a complacent State Member, and I believe, taken for granted.

As a young, working mum I believe I can provide a new approach to politics and a new, dynamic way forward for Upper Hunter.



Q&A



IMAGE CORTESU OF JANNOON028 / FREEPIK

With our Region, what do you feel could prop up existing businesses to the extent or volume that the mining industry does?

Michael: Mining is the single biggest economic contributor to the Upper Hunter, and the economic and employment benefits to our electorate, cannot be underestimated. While I will continue to work to expand the potential of all businesses in Upper Hunter, be they small or big business, I will not let Sydney-based politicians or bureaucrats forget how important mining is to our electorate.

Lee: Mining is by far the biggest employer across the Upper Hunter and I would like to see what new businesses and industry we can attract to add to the mix of our local economy. We are the energy hub for the state, and I'd like to ensure any new power stations are built here where we already have a highly skilled workforce.

Mel: The Upper Hunter is the powerhouse of NSW, generating about 50% of the State's energy needs. AGL have plans to spend billions on a whole new range of energy generation, including upgrades to Bayswater Power Station, investment in pumped hydro, large scale solar and new battery storage technology. That investment alone will allow us to remain the State's powerhouse and continue to create good jobs for many decades to come. Additionally, there is an enormous amount of potential ready to be unlocked in Upper Hunter. Growth in existing industries such as agri-business, tourism and thoroughbreds will continue to drive employment

and the electorate is perfectly positioned for academia, research and development.

Will you advocate for more or less employment in the mining industry?

Lee: More employment, especially permanent employment. Casualisation is a huge concern for so many families and I support better and fairer job security within mining. I am opposed to mines that want to use fly-in and fly-out workers, we have a strong and capable workforce and their jobs come first.

Mel: More, permanent jobs in particular.

Michael: I have a strong track record for publicly and consistently supporting our local mining industry. I will continue to advocate for more employment in the industry.

If a new mine was to put in an application that meets all current environment and community standards and requirements, would you support it?

Mel: Yes.

Michael: On the basis that it met all community standards, I would support such an application, as I want to see more local industry and employment, not less.

Lee: Yes. If a mine has the support of the local community, as the local member, my role is to represent their interests and so that is what I would do. That is not to say I would blanketly support all mine proposals though. I was the only candidate to stand by the workers of Drayton South, I back my words with action.

How long do you envisage our mining exports will continue?

Michael: I believe that if there is a market for our coal, be it a foreign or domestic market, then mining exports will continue for many decades to come, which is why both myself and the Nationals will continue to strongly support the industry.

Lee: I'm not an analyst, but most analysts agree coal is here to stay for decades to come, Australia has some of the highest quality coal in the world and while the world wants it, we will export it.

Mel: Indefinitely. At least 90% of the coal produced in the region goes to Newcastle Port for export, so regardless of where the current debate around power generation leads, coal as a valuable commodity will continue to drive investment and economic development in the Lower and Upper Hunter

How will you lobby to obtain more coal royalties for our Region?

Lee: The Shooters Fishers and Farmers Party will likely hold the balance of power in the next Parliament. We can force both sides of politics to deliver for our region, just like we are negotiating that 30% of all proceeds from the sale of poles and wires need to be spent in the bush.

Mel: I will work towards an ongoing solution that provides long-term guaranteed investment.

Michael: I have a proven track record on calling for more royalties to be spent in our region, and not in Sydney, but to the benefit of our local communities. Money from royalties go to roads, schools and hospitals and Police etc., and it is as much about providing equality in our service delivery

compared to metropolitan areas.

Besides schools, hospitals, energy- what will be one of the big-ticket items you would achieve.

Mel: Labor has already announced a package to assist local councils with their road's infrastructure backlog. We already know that economic activity is vital for the continued growth of regional communities, which is why Labor will be rolling out a program to revitalise main streets in various town centres across Upper Hunter. There are more announcements to come, however there will be an ongoing focus on road infrastructure projects, schools, hospitals, tourism and the environment, TAFE, law and order. Labor will always put the Upper Hunter before \$2.2 billion Sydney Stadiums.

Michael: Infrastructure, particularly roads, remains an important issue for our communities, and since 2011 the Nationals in Government have provided over \$1 Billion for road upgrades in Upper Hunter, and there is still more to do. I am committed to delivering more for our rural communities in Upper Hunter.

Lee: I want to see proper infrastructure starting with the bypasses being built, not just talked about. They should be two lanes to accommodate us well into the future, not the one lane they are proposing which will bottle neck as soon as they open. More police in our towns, it's not good enough to have a half hour response time for emergencies. Proper drought support for our farmers and water infrastructure throughout the electorate. There is a long list of basic things we need, and I want to get to work getting it done.



Height adjustable platforms



Accumax Global Pty Ltd

Providing solutions to manage & reduce RISK!



1300 222 862

| www.accumaxglobal.com.au

| sales@accumax.com.au

LIFT OFF!

LEADING FORKLIFT COMPANY MLA HOLDINGS (MLA) HAS EXPANDED INTO THE HUNTER WITH THE ACQUISITION OF HUNTER LIFTRUCKS AND INGLIS EQUIPMENT.



Both companies have a long history in the Hunter with owner Ray Inglis started the Inglis Equipment forklift hire business in 1978, and the complementary forklift sales, parts and servicing business, Hunter Liftrucks, in 1985. Both businesses specialise in helping local customers find the right equipment for the job. Over decades, they have built strong reputations for being responsive to customer needs, selling and hiring only quality forklifts, and supplying the very best service and reliable spare parts. The new Hunter MLA Branch will incorporate the best of all three businesses. Local customers will deal with the same friendly and professional teams they have always known, while gaining access to a wider range of products and services. "Hunter Liftrucks, Inglis Equipment and MLA are a perfect fit for the

Newcastle, Hunter and Central Coast Region," said Geoff Marshall, Sales Manager at Hunter MLA. "Both Hunter Liftrucks and Inglis Equipment bring a strong local presence and a good understanding of the area's business needs, and MLA has the experience and strength as the national distributor and rental provider of Mitsubishi Forklifts." For MLA, the acquisition makes it easier to reach customers in the Newcastle, Hunter and Central Coast region and provides synergies for the established branch structure and Sydney head office. **"HUNTER MLA SUPPORTS OUR VISION TO BE THE MATERIALS HANDLING SUPPLIER OF CHOICE IN THE NEWCASTLE, HUNTER AND CENTRAL COAST REGION OF NEW SOUTH WALES," SAID MATT SAUNDERS, OPERATIONS DIRECTOR FOR MLA.**

STAYING IN SINGO

WSP HAS CEMENTED THEIR ONGOING COMMITMENT TO THE HUNTER REGION WITH THEIR RECENT MOVE TO NEW PREMISES IN SINGLETON.

The firm began their long history in the region with the establishment of their first Singleton office at 100 George Street in 1978 to provide project management support for the construction of the Haul Road for Coal and Allied's Hunter Valley No.1 Mine. Since then, WSP has been involved in the design and delivery of many significant local projects including Liddell Coal, Glendell, Mangoola Mine and Bengalla. In his role as Regional Director for NSW, Glenn Thornton has supported the growth of the Singleton business, its people and clients. He said, "Providing

outstanding professional engineering, water resources and environmental services from our Singleton office for more than four decades is a real testament to our people, their technical skills and ability to understand our clients' needs." In the four decades WSP has been at the forefront of the mining industry, we've seen them evolve from Longworth and Mackenzie, to PPK, Parsons Brinckerhoff (PB) and most recently to WSP. Under every name they've been known for their trusted civil and geotechnical engineering expertise.



Weldlok®

For over 60 years, Weldlok® has been the leader in the design, manufacture and supply of compliant products to building and infrastructure projects across Australia

Our Products

Steel Grating



Industrial Handrail Systems



Civil Drainage



FRP Grating



Aluminium Grating & Handrail Systems



117-153 Rookwood Road
Yagoona NSW 2199
P: 02 9707 5088
F: 02 9707 5050
E: info@weldlok.com.au

Visit our website to see the full product range
www.weldlok.com.au





FRONT L-R: KERRI SHAW, KATHERINE GECZY, TEGAN TYRRELL. BACK L-R: EMMA GILLINGS, GEMMA BUNNER.

GIRL GROUP

THE HUNTER VALLEY BOUTIQUE COLLECTIVE INC (HVBCI) WAS FORMED IN 2018 BY 5 HUNTER REGION FEMALE BUSINESS OWNERS AND WHILE THE NAME WAS NOT EASY TO ARRIVE AT, THE GROUP ITSELF HAS FORMED, INCORPORATED AND GROWN WITH EASE.

The committee is made up of Katherine Geczy, President, Owner of Excellence Laser Clinic & Registered Nurse, Gemma Bunner, Vice President, Director & Principal Lawyer Shaw & Bunner Legal, Emma Gillings, Secretary, Managing Principal MAI Hunter Valley Pty Ltd, Marsh Advantage Insurance, Kerri Shaw, Treasurer, Director & Principal Lawyer Shaw & Bunner Legal and Tegan Tyrrell, Committee Member (Marketing), Director & Graphic Designer Design et cetera.

President Katherine Geczy said the idea came about as they were looking for somewhere that they could meet

other professional women that offered not only support but also education and inspiration.

“THERE WERE PLENTY OF NETWORKING GROUPS AROUND, BUT WE WERE AFTER SOMETHING DIFFERENT, WITH A FOCUS ON COLLABORATIVE PROFESSIONAL DEVELOPMENT AND SO WE DECIDED TO FORM OUR OWN GROUP,” KATHERINE SAID.

Katherine told us that they wanted to create a group where people could enjoy the collective experience of continuing to learn and develop, and at the end of each meeting

walk away feeling inspired without having to travel outside of our local area.

“Our group caters to a wide range of people including business owners and employees and is targeted to professional development within business rather than to a specific qualification. Whether you are an employee or an employer, we try to make sure we offer value to each member.”

ALTHOUGH MEMBERS ARE PREDOMINANTLY WOMEN, IT IS NOT EXCLUSIVELY FOR WOMEN AND KATHERINE SAID EVERYONE IS WELCOME REGARDLESS OF GENDER OR PROFESSION.

“We’ve had men who come along that know we are onto a good thing. At our meetings there is no pressure to network or be defined by your

profession, just come along and have a chat and hopefully you will find encouragement and motivation. We find that from here the networking happens organically,”

The group meets on the first Thursday evening of each month from February to December. They aim to be accessible to everyone and the first meeting is free so people can come along and see if the group is right for them. If they want to continue coming to meetings, then they can join as a member.

Each meeting has guest speakers and topics vary to provide members with education and inspiration. “We have had members tell us they walk away from meetings with the energy to get things done. We provide supper, a glass of wine, a good laugh, and plenty of wonderful welcoming people to meet,” Katherine said.

MITCH DAY MEMORIAL WEAR

The boys from the Mitch Day Memorial Bears team have kindly donated a team Jersey and Singlet for one of our lucky readers. The memorial side is in honour of Mitch and to raise awareness and education around Bowel Cancer.

FOR YOUR CHANCE TO WIN, SIMPLY SMS: BEARS, YOUR NAME, AND YOUR EMAIL ADDRESS TO 0438 474 290.

Limit of one entry per person.
LTPM/19/04020



BY SUBMITTING AN ENTRY, YOU CONSENT TO THE USE OF YOUR CONTACT DETAILS FOR PROMOTIONAL AND MARKETING PURPOSES.



Mining Tire Group

THE LEADERS IN MINING TYRE SERVICE, SUPPLY & REPAIR

Kal Tire Muswellbrook repairs all sizes of earthmover tyres and specialise in the complete range of tyre management services for mining and industry.

The facility has an extensive history and reputation for quality repairs within the Hunter Valley over the last 25 years.

The Muswellbrook repair facility has long term experienced and qualified tyre repairers who work and live in the Hunter Valley and is a locally based employer.

PH 02 6542 5281

28 STRATHMORE ROAD MUSWELLBROOK

e: Australia@kaltire.com www.kaltiremining.com





PIRTEK
WE'LL KEEP YOU OPERATING

LEARN FROM THE LAWMAN

STUART BARNETT IS OUR MINING INDUSTRY'S LEADING PERSONAL INJURY LAWYER. THIS MONTH HE HAS SOME IMPORTANT ADVICE IN RELATION TO SOME COVERAGE THAT YOU MAY NOT REALISE YOU HAVE IN YOUR HOME BUILDING, LANDLORD OR CONTENTS INSURANCE POLICY.

Have you ever thought or indeed worried about what would happen if a visitor to your property injured themselves or suffered a fatal injury due to your negligence or failure to keep the place safe? Alternatively, what if the negligent actions of yourself or a member of your family led to someone being injured or killed, even away from your property?

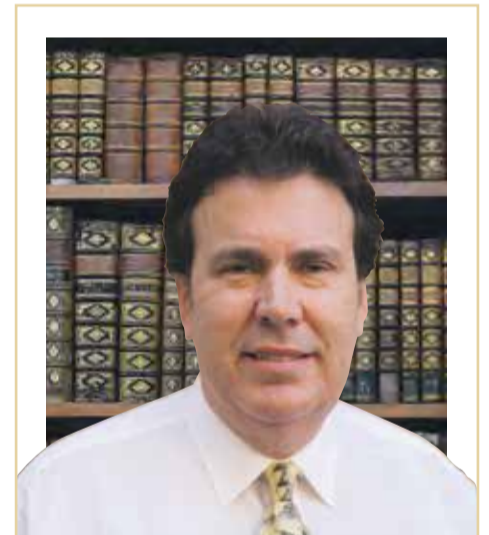
MANY PEOPLE DON'T REALISE THAT THERE IS OFTEN INSURANCE COVERAGE IN THESE CIRCUMSTANCES. THE HOME OR INVESTMENT PROPERTY OWNERS OUT THERE WILL LIKELY HOLD BUILDING OR LANDLORD INSURANCE POLICIES AND RENTERS MAY WELL HAVE CONTENTS INSURANCE POLICIES. THESE POLICIES OFTEN INCLUDE COVERAGE AGAINST PUBLIC LIABILITY CLAIMS.

Public Liability insurance is designed to protect you if your actions, inactions, negligence or condition of your property is found to cause a person to have been injured or killed. There are two potentially expensive aspects to such a claim, firstly the cost of litigation itself and secondly the actual compensation ordered to be paid. Both components in their own right could place a great financial burden upon you or at least cause you to have to sell your assets to resolve the claim. The combination of the two could be financially and mentally devastating.

THIS TYPE OF INSURANCE IS NOT A LICENSE TO IGNORE YOUR RESPONSIBILITIES OR TO GO OUT AND COMMIT RECKLESS AND EVEN DELIBERATE ACTS. THERE WILL BE EXCLUSIONS IN YOUR POLICY. THESE EXCLUSIONS WILL VARY FROM POLICY TO POLICY, BUT EXAMPLES MIGHT INCLUDE DELIBERATE ACTS SUCH AS AN ASSAULT AND ACTS COMMITTED UNDER THE INFLUENCE OF ALCOHOL OR DRUGS.

Policy owners may also find that members of the immediate family who ordinarily reside with you cannot claim for injury or damage. For example, a child injured as a result of a parent's negligence may be precluded from claiming.

YOU MIGHT BE TEMPTED TAKE THE RISK AND GO WITHOUT INSURANCE, BUT IT IS WORTH CONSIDERING OTHER EXPENSES THAT MIGHT ARISE AS A RESULT OF YOUR OR YOUR FAMILY'S ACTIONS, SUCH AS WHEN A PUBLIC LIABILITY CLAIM IS MADE AGAINST YOU. JUST LIKE ALL CONTRACTS, IT'S ALL ABOUT THE WORDING OF THE INSURANCE POLICY DOCUMENT. PLEASE MAKE SURE YOU READ AND UNDERSTAND ANY INSURANCE POLICY THAT YOU HAVE OR ARE ABOUT TO TAKE OUT, THEY MAY INCLUDE SOME, ALL OR NONE OF THE CIRCUMSTANCES I HAVE OUTLINED IN THIS ARTICLE.



This is general advice and because your individual circumstances will vary, I recommend seeking out specific advice for your needs.

STUART BARNETT, SLATER & GORDON LAWYERS



HOSES & FITTINGS



FIRE SUPPRESSION



QUICK FILL



SAFETY



LUBRICATION



SPILL CONTROL

Contact:

Dubbo

Call 0417 844 578

Gunnedah

40-44 Allgayer Dr. Gunnedah
(02) 6742 4988

Lithgow

1 Ian Holt Dr. Lithgow
(02) 6355 7004

Maitland

129 Racecourse Rd. Rutherford
(02) 4932 1120

Mudgee

36 Sydney Rd. Mudgee
(02) 6372 3454

Muswellbrook

88 Maitland St.
(02) 6543 4255

Newcastle

20 Munibung Rd. Cardiff
(02) 4954 5933

Orange

97 Elsham Ave. Orange (02)
6360 2944

Singleton

14 Maskey Rd. Mt Thorley
(02) 6574 2782

Tamworth

4/61 Barnes St. Tamworth
(02) 6762 0600



134-222

24 HOURS - 7 DAYS
www.pirtek.com.au

'AVE A LAUGH WITH



Three football teams (Arsenal, Liverpool, and Hartsfield) are flying from England across Egypt for a match in the Middle East. Their plane crashes in the desert and they survive.

After days of wandering, they are really hungry so when they come across a camel, the footballers decide to kill it and eat it.

The Liverpool team says, "Because we play for Liverpool, will we eat the liver."

The Hartsfield players decide, "Because we play for Hartsfield, we will eat the heart."

Arsenal says, "I think we might go hungry..."

FUTURE OF MINING

25-26 March 2019 AUSTRALIA

Sofitel Sydney Wentworth
Sydney, Australia

BOOK YOUR TICKET
by 28th February 2019
and **SAVE 15%**
Apply promo code: FMA15

Meet the industry leaders

who shape the Future of Mining



Jake Klein
Chief Executive Officer
Evolution Mining



Friska Wirya
Change Lead - Digital
Newcrest Mining



Ricus Grimbeek
Chief Operating Officer
North Atlantic Operations and
Asian Refineries, Vale Based
Metals



Penny Stewart
Managing Director
PETRA Data Science

"Very informative with some
good take away thoughts to
apply in our own business."
Manager – Projects, Pilbara Minerals



Platinum Partners:



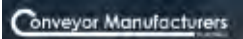
Supported by:



Gold Partners:



Silver Partners:



Start-Up Partners:



Exhibitors:



For the latest agenda and to register

visit australia.future-of-mining.com or email events@aspermontmedia.com

PARALLEL ECONOMICS FERAL FIGHT FOR CHARITY

FERAL ANIMALS ARE A BIG PROBLEM FOR LANDHOLDERS IN THE HUNTER. FROM FARMS, TO NATIONAL PARKS TO OUR MINING SITES, BUFFER LAND AND OFFSETS, IT'S A CONSTANT CHALLENGE THAT IS HARD TO KEEP IN FRONT OF.

There are some that claim mine sites are breeding grounds for pests including pigs, dogs and others, but like most other landholder's, robust pest management is an integral part of mining operations.

Feral pests are an unwanted but shared problem. So what might we be able to do to keep ahead of the pack so to speak?

The Hunter has a wealth of responsible, professional and semi-professional recreational Hunters who would gladly come together to help tackle the problem.

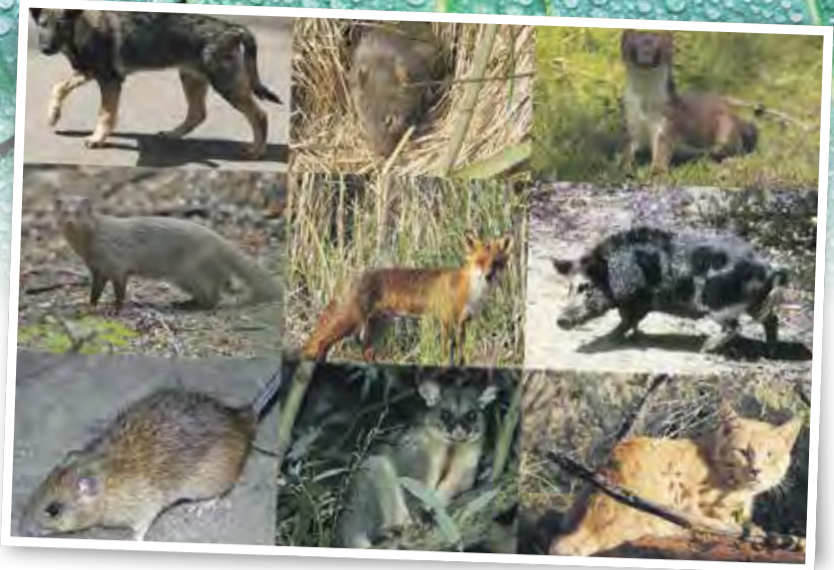
EACH YEAR WE COULD POTENTIALLY STAGE A VERY WELL ORGANISED AND REGULATED 'HUNTING WEEK' TO GET ON TOP OF FERAL POPULATIONS ON MINE SITES AND OTHER LAND. PARTICIPATION WOULD BE TIGHTLY REGULATED, AND PARTICIPATION FEES COULD RAISE VALUABLE FUNDS FOR LOCAL CHARITIES IN THE LAND MANAGEMENT SPACE.



'Hunting Week' could complement the year-round efforts of our mining companies who already employ professionals to help manage unwanted ferals. Agricultural landholders could also participate in the event by allowing access to land that is experiencing feral animal issues.

The whole event would necessarily be extensively planned and regulated and include a comprehensive training day before the hunt started. Training could be designed extend the knowledge, legalities and capabilities of feral issues in our region, humane hunting practices and greater safety and protocol education around responsible hunting.

We are not for one minute suggesting that an idea like this would be anything but a challenge to organise given the stringent safety regulations on mine sites. That said, it is far from an impossible scheme to make happen.



'Hunting Week' could lead to happy landholders and more

productive agriculture in our region. Happy hunting!

THE MEGA MONTHLY MEAT RAFFLE WORTH \$150 COMPLIMENTS OF ROBERT'S MEATS



The Hunters best butcher of hand-picked meaty goodness!

FOR YOUR CHANCE TO WIN, SIMPLY SMS: ROBERTS MEATS, YOUR NAME AND YOUR EMAIL ADDRESS TO 0438 474 290.

Limit of one entry per person. LTPM/19/04020

BY SUBMITTING AN ENTRY, YOU CONSENT TO THE USE OF YOUR CONTACT DETAILS FOR PROMOTIONAL AND MARKETING PURPOSES.

DECISIVE & RESOURCEFUL | RESPONSIBLE | ENTREPRENEURIAL & INNOVATIVE | ONE TEAM

Join the
MACH
Energy
team!



Exciting opportunities available with Australia's newest coal producer

MACHEnergy

Mount Pleasant Operation

Accounts Payable / Receivable Officer	Newcastle office
Maintenance Planner	Mount Pleasant Operation*
Executive Assistant / Office Manager	Newcastle office
Senior Financial Accountant	Newcastle office
Senior Management Accountant	Newcastle office
Senior HR Advisor	Newcastle office
Senior Coal & Logistics Engineer	Mount Pleasant Operation*
Environment Superintendent	Mount Pleasant Operation*

For an initial confidential discussion regarding this role only, please contact Andrew Kelly 0419 011 736.

**Must be prepared to live or relocate to the Upper Hunter region, Muswellbrook, Singleton, Aberdeen for example.*

EMAIL US NOW: human.resources@machenergyaustralia.com.au

⚠ Agency applications will not be accepted

OPINION: Right to Royalties

IMAGINE IF SINGLETON WAS GUARANTEED \$12 MILLION FROM THE MINING ROYALTIES PAID TO THE STATE GOVERNMENT AS A RESULT OF THE RESOURCES EXTRACTED FROM OUR AREA EVERY YEAR, TO BE SPENT ON PROGRAMS, INFRASTRUCTURE AND FACILITIES TO SUPPORT MINEWORKERS AND THE BROADER COMMUNITY.

Then consider the fact \$12 million represents a mere 4% of the \$300 million in mining royalties that are funnelled to Macquarie Street every year, and whether this trifling amount is an unreasonable trade for the riches from our area that benefit everyone in NSW.

SINGLETON COUNCIL HAS SUGGESTED SUCH A SCENARIO AS AN ALTERNATIVE TO THE STATE GOVERNMENT'S RESOURCES FOR REGIONS PROGRAM. AND AS THE MOST SIGNIFICANT COAL PRODUCER IN NSW, IT'S NO CLICHÉ TO SUGGEST WE ARE LITERALLY AT THE COALFACE TO UNDERSTAND WHAT'S NEEDED MOST.

We have raised issues with the program as it currently stands directly with the NSW Government, including in conversations with the Deputy Premier John Barilaro, most notably because mining and resource-rich communities must compete for a slice of the funds available. Further, funding allocations to date have failed to give

due consideration to the degree of mining impacts for particular areas.

Recommendations unveiled late last year from the House of Representatives' Standing Committee on Industry, Innovation, Science and Resources enquiry into how the mining sector can support businesses in regional economies included Federal Government support for "Royalties for Regions"-type programs. The recommendation stipulates the programs must ensure a share of mining royalties are reinvested in the regional areas that face the direct effects.

Given the State election is just around the corner, it is opportune for both sides of NSW politics to reconsider how the Resources for Regions program could be fairer for the people who live and work where the mining royalties are produced. So, we're also in discussions with representatives from the Labor Party and other candidates for the seat of Upper Hunter in the lead up to the State election.



IT IS SINGLETON COUNCIL'S POSITION THAT A MEASLY 4 PER CENT SHARE OF MINING ROYALTIES WOULD BRING ENORMOUS BENEFITS TO SINGLETON, TO BE SPENT ON INFRASTRUCTURE, ECONOMIC AND COMMUNITY DEVELOPMENT PROGRAMS TO COUNTERWEIGHT MINING INCLUDING CREATING PARALLEL ECONOMIES AND PLANNING FOR POST MINING LAND USE.

Further, given the opportunity to present a wish list to the powers-that-be in Macquarie Street in the lead up to 23 March 2019,

Council would request the fast tracking of the Government's \$92 million commitment to the New England Highway bypass and seek the additional funds required to make it a reality. Also on the list is increased capacity for an expansion of commuter train services.

There is no disputing that Singleton has benefited from the Resources for Regions program, nor that our area is entirely overlooked by the Government as evidenced by announcements such as \$2,787,000 for an arts and cultural centre for Singleton under the Government's Regional Cultural Fund.

In addition, there have been very positive conversations around the provision of more passenger rail services between Council, the Two More Trains for Singleton group and Transport for NSW.

However, it is not unreasonable to assume a fairer return on our community's significant investment in generating wealth for everyone in NSW, and the same quality lifestyle and opportunities for the people of Singleton afforded to other areas.

**Cr Sue Moore,
Mayor of Singleton**

'AVE A LAUGH WITH

PH 6545 3033



My wife told me she thought we'd have less arguments if I wasn't so pedantic. I told her, "I think you mean fewer."

NOW STOCKING HONDA MOTORCYCLES



TOGETHER WE GROW.

GROW WITH US IN MUDGEE

Monadelphous' Maintenance & Industrial Services continues to experience high levels of growth both nationally and on the east coast. Our fixed and mobile plant business units service mine sites across NSW – From Pit to Port. We have the resources to rapidly respond to our clients needs. To continue to deliver the highest level of service and value for the clients operations, we have expanded into the Mudgee region. Our Mudgee branch is supported by our larger operations in the Hunter Valley allowing our local branch to flex when required and rapidly respond to our clients short term critical needs. At Monadelphous we are passionate about building long lasting relationships built on our core values Safety, Integrity, Teamwork, Loyalty & Achievement.

MUDGEE OPERATIONS

Our Mudgee Operations offer local Mechanical and Electrical trades for our clients all under One roof – Boilermakers, Fitters and Electricians.

Our branch also offers the area's largest local scaffolding service with over 60 tonne of scaffold available in our Mudgee yard and a further 150 tonne available at short notice from the Hunter Valley.

Our Mudgee Workshop is equipped to fabricate anything our clients require and our fabrication and paint workshops in the Hunter are setup to fulfill our clients larger structural steel requirements.

MUDGEE OPPORTUNITIES

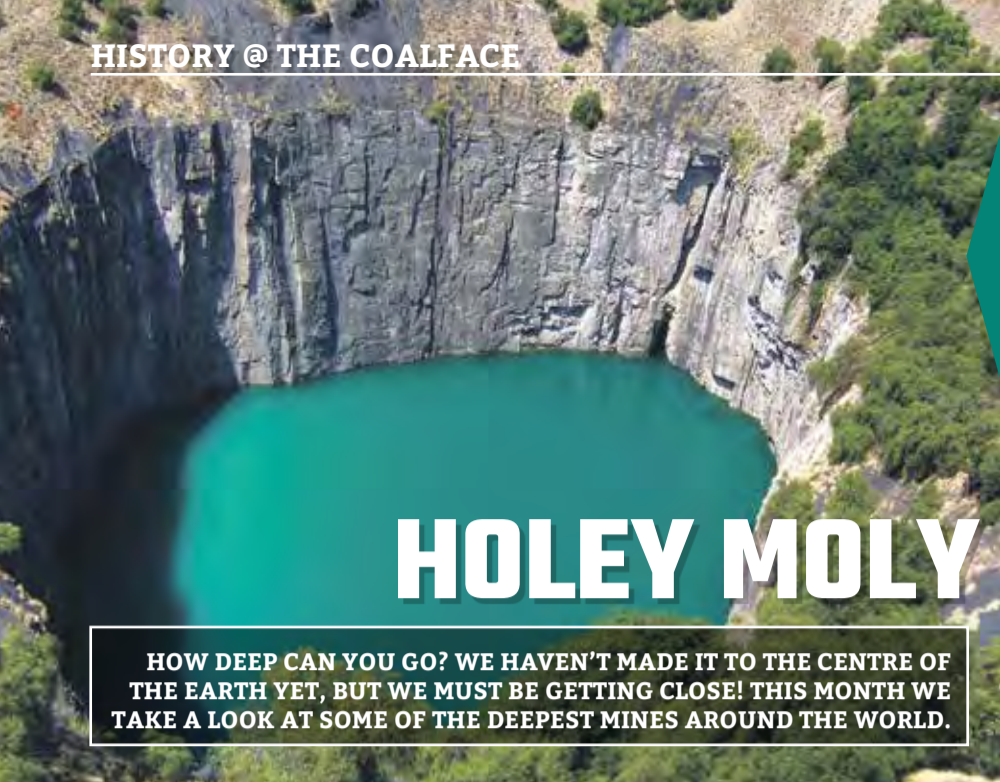
Mudgee is forever bustling. With a vibrant wine industry and numerous events every weekend it offers a perfect rural lifestyle.

A convenient 3 hour drive to Sydney or Newcastle.

Our Mudgee Branch is currently hiring:

- Electricians**
- Boilermakers**
- Fitters**
- Scaffolders**
- Riggers**
- TA's**

Be part of something special in Mudgee – Apply today at www.monadelphous.com.au/careers



HOLEY MOLY

HOW DEEP CAN YOU GO? WE HAVEN'T MADE IT TO THE CENTRE OF THE EARTH YET, BUT WE MUST BE GETTING CLOSE! THIS MONTH WE TAKE A LOOK AT SOME OF THE DEEPEST MINES AROUND THE WORLD.

THE KIMBERLEY DIAMOND MINE, AFRICA

This mine is known as "The Big Hole" though it actually started as a hill. From 1871 to 1914, more than 50,000 miners used picks and shovels to dig to a depth of more than 240 metres. Beneath the surface the mine underneath was mined to a depth of 1097 metres. 2720 kilos of diamonds were pulled from it and today it is a tourist destination.



THE BINGHAM CANYON MINE, UTAH

Over 100 years old, this copper mine is the considered the largest man-made excavation in the world at 970 metres deep and 4km wide. First started in 1906, the mine is still running and has produced 19 million tons of copper. It's been named a National Historic Landmark and has a visitor center for people who want to come and gawk.

DIAVIK DIAMOND MINE, CANADA

The Diavik Diamond Mine opened in 2003 and has reached a depth of over 250 metres in the Canadian Arctic. The mine is accessible only by plane - there's a gravel runway big enough for a Boeing 737 - and an ice road. And that's only if the weather is good enough. The mine yields around 1500 kilos of diamonds annually amidst the ice.





Imperial HOTEL

CALL IN AND MEET OUR **friendly staff!**



\$10 Lunch Menu

CALL TO BOOK YOUR NEXT WORK OR CREW FUNCTION
10AM-12PM & 4-6PM ~ \$4 SCHOONERS!

MON	\$9.90 Steaks	THUR	\$24 Ribs & Rump
TUES NIGHT	\$14 Snittys + Trivia	FRI	Meat raffles at 6.30pm \$5 drinks all night
WED NIGHT	Free raffles + \$10 Pizza	SAT	Live entertainment from 8.30pm
		SUN	\$15 Roast and Kids Eat Free

PH 6572 1290 183-185 John St Singleton



MIRNY MINE, RUSSIA


There are claims that the winds around Siberia's Mirny Mine sucks unsuspecting helicopters into its 500-metre-deep pit swirl, but even with those rumors aside, the diamond mine that began in 1955 remains fully off limits. Deep enough to hold a 150-story skyscraper inside, Stalin's diamond mine stretches almost 1200 metres across and is one of the largest excavated pits in the world. And even though work in the open-pit mine has ceased, Russia still mines underground in the site.



KALGOORLIE SUPER PIT, WESTERN AUSTRALIA

At 3800 metres long and 550 metres deep, it's no wonder that this man-made earth scar in Western Australia can be seen from space. The Super Pit's history stretches back to 1893 and the Gold Rush era, when Paddy Hannan discovered 100 ounces of gold in Kalgoorlie-Boulder. This sparked the WA gold rush and the discovery of the 'Golden Mile', one of the richest gold deposits in the world.






PROFESSIONAL QUALITY TOOLS




\$445
INC GST

LIMITED STOCK!



KINCROME
PROFESSIONAL QUALITY TOOLS


SOCKET SET 28 PIECE

- 10 3/4" Drive **METRIC** Sockets: 24- 50mm
- 12 3/4" Drive **IMPERIAL** Sockets: 15/16 - 1.7/8"
- 6 Accessories

K28145

EACH \$122
INC GST


LIMITED STOCK!



Supatool

JUMBO SPANNER SETS 9 PIECE

- **METRIC** 28, 29, 32, 35, 38, 41, 44, 48, 50mm
- **\$3025**
- **IMPERIAL** 1-1/16, 1-1/8, 1-1/4, 1-3/8, 1-1/2, 1-5/8, 1-3/4, 1-7/8, 2"
- **\$3024**



ALLWELD
SERVICES PTY LTD
WELDING A SOLID FUTURE!

www.allweldservices.com.au

BERESFIELD SALES
2/8 Young Drive Beresfield NSW 2322

MUSWELLBROOK SALES
7 Blakenfield Road Muswellbrook NSW 2333

FLAME N ARC SERVICE & REPAIR
8/8 Young Street East Maitland NSW 2322



MOUNT VIEW

GRANGE

**BEST VALUE LAND IN THE HUNTER
FROM \$160,888**



SECURE A BLOCK WITH ONLY 5% DEPOSIT AND NOTHING MORE TO PAY UNTIL MID-2019



Artist's Impression

AFFORDABLE HOUSE & LAND PACKAGES FROM \$385,280

Come home to mountain views and the rolling hills of the Hunter Valley. Mount View Grange is a new master-planned community offering unrivalled value to young families and first home buyers. Just 8 minutes from Cessnock town centre and 25 minutes from the Hunter Expressway, you can enjoy rural community living close to shops, schools and transport.

Our new release features fully-serviced, near-flat 600 to 837m² blocks, many with beautiful uninterrupted views and expansive frontages. 3, 4 and 5 bedroom house and land packages are also available.

Build a good, grand life for your family now.



**SALES CENTRE AT 88 HETTON ST, BELLBIRD
OPEN TUE, THURS, FRI, SAT & SUN 10AM-3PM**

**CALL 1300 888 888
MOUNTVIEWGRANGE.COM.AU**

MY MINING LIFE

EMMA WOTTON

EMMA HAS GROWN UP WITH MINING IN THE BLOOD. SO, IT COMES AS NO SURPRISE THAT HER MINING CAREER IS ON THE UP AND UP.

Who are you and what do you do?

Emma Wotton, Production Supervisor at Mount Arthur Coal.

Any nicknames good or bad?

Wonton.

Where do you live and how long have you been in the Valley?

I live in Cessnock. I moved to the Hunter Valley 9 years ago from Queensland.

When did you start and what's the ride been like?

I started at Mt Owen as a graduate mining engineer with Thiess in 2009. I worked at Mt Owen doing Drill and Blast Engineering and Mine Planning. In 2012 I moved to Bulga as a Mining Engineer and spent time working in mid-term planning and dig and dump planning. In 2016 I decided to move into a production role as an Overburden Analysis and Improvement Specialist at Mt Arthur Coal. Last year, I was given the opportunity to come onto crew as a Production Supervisor while I am trying to complete my mining engineering manager competency.

What's a usual day at work entail?

I start my shift with a handover and the line up meeting with our dispatch team in Brisbane. The shift is usually full of dig and dump inspections, field leadership and safety activities, coaching operators and meetings.

How big is the crew?

Usually about 170 operators.

What's the best thing about your job?

I really enjoy working with people and problem solving. I love being able to understand how my team thinks and what makes them tick. Getting the best performance out of my team is so rewarding.

The worst thing?

Having to get out of bed and get to work by 5:15! I love my sleep.

How different is your job to what you wanted to be when you were a kid?

I always wanted to work in mining, but I thought I would have been a drill and blast engineer. My career

and aspirations have certainly changed and evolved since I started working in mining

What would your mum say about you when you were a kid?

My mum would say that I've always been a very headstrong and determined person.

What do you do in your downtime?

I spend my free time collecting Australian wine and whiskey and dining out in the vineyards.

Why did you decide to start a career in mining?

My family is in mining, I'm third generation and was born in a small mining town in the Pilbara called Tom Price. Both of my parents are in mining and my mum was my inspiration to join the industry.

I was brought up around many strong, determined women in mining I am still lucky enough to have some of those women in my life continuing to mentor me to this day.



Are you passionate about promoting women in mining and do you aim to develop other women you work with?

I'm extremely passionate about mining in general and early in my career I actively promoted careers in mining to university and high school students, both male and female. Over the years I have taken other young women under my wing to share my knowledge. But this year I am planning to take this a step further and will be working together with Nicky Samuelson, an operator on my crew, and the team at BHP. We're aiming to kick off a mentoring program at Mt Arthur Coal for young female operators and professionals. It's early days, but we'd like to build the program from the floor up, hopefully helping to develop the talent we have on site to understand their future career paths and build their leadership skills.



BENGALLA UPPER HUNTER Show

Packed with **EXCITING RIDES & SIDESHOW ALLEY ACTION** for the entire family!



Sunday HORSE SHOW FREE

SHOW PRICES

2 Day Pass FRI + SAT

- FAMILY \$50 (2 adults + 2 children)
- ADULT \$25

1 Day Pass

- FAMILY \$30 (2 adults + 2 children)
- ADULT \$15
- CHILD \$5
- AGE PENSIONER \$5

to name a few!

CHECK THE WEBSITE OUT FOR MORE DETAILS www.upperhuntershow.com.au

SUPPLIER INSIDER

DK HEAVY PLANT SERVICES



Who are you and what do you do?

David Komacha, I'm the Managing Director of DK Heavy Plant Services and DK Blast and Paint. We service local mines in the Hunter Valley for mechanical and fabrication services. Our services vary from offsite tray and bucket refurbs to onsite breakdowns and everything in between. More importantly though, I'm a husband and a father to two amazing little girls.

Where did you start and how did you end up where you are now?

I started on my own as a sub-contractor to mines in the Hunter working as a plant mechanic. My wife and I ran our business from home. I started to see a demand for experienced mechanics, and this drove me to expand my business to employ others and supply labour

to local mine sites. Eventually we outgrew the home office and moved into our workshop at Muswellbrook Industrial Estate. With the facilities the workshop offered we started to vary our workforce to accommodate for offsite mechanical and heavy fabrication services. I got where I am today by working hard – 7 days a week and working long hours – and a lot of hours on the phone!

Describe a typical day at 'The office'.

I am generally one of the first to arrive. I like to be present at pre-starts and throughout the day and I enjoy talking to everyone in the workshop. Most days I will visit a client on mine sites. This allows me to talk to clients and team members on mine sites.

What's the best thing about your business?

The best thing about our business is the team. We all work really well together.

What is the big news in your part of the mining industry right now?

Opportunities and potential. The opportunity to grow and develop with the moving market, including the possibility of gaining new clients and branching out into new areas. With the prosperous mining industry at the moment it's exciting times ahead!

What is the biggest opportunity for your business right now?

The mining industry is prosperous allowing for opportunities to pursue work in new areas. To grow our business to move with the current market.

What are the biggest challenges facing your business?

There's not enough time in the day! We have so many ideas and goals it's hard to accomplish everything we want to!

How long have you been doing business and business in the Valley?

DK Heavy Plant Services has been operating in the Hunter Valley for 3 years.

Community or other causes close to its heart and values?

We have been involved with sponsoring local sports teams and supporting them at community

events, raising money for local children with disabilities and we've even been involved in local go-cart races. We've also supported our employees in charity events they've been involved in.

How big is the crew in the Hunter Valley?

We currently have about 70 team members working in the hunter valley.

What's the best thing about your job?

The challenge. I love working hard and overcoming the challenges that arise within the business. I also enjoy taking on new business opportunities and building them into successful projects.

The worst thing?

Being on call 24/7. My phone never stops ringing. I receive phone calls at all hours about the biggest or smallest issues.

What's a funny story about work that you can tell?

If you want to hear some funny stories feel free to tag along to our next Social Club event! I'm sure you'll hear some good ones!

DK Heavy Plant Services...what's the best thing about it?

The best thing about DK Heavy Plant is the team! The team makes the company! Our success is driven from our team and the community support we receive! We can't thank you all enough!

Help Shape the Future of The Upper Hunter



APPLICATIONS ARE SOUGHT FOR COMMUNITY REPRESENTATIVES TO JOIN THE UPPER HUNTER MINING DIALOGUE'S WORKING GROUPS

The Upper Hunter Mining Dialogue (UHMD) is a collaborative initiative between the mining industry and the community to better understand community concerns regarding mining operations and work together in developing and implementing solutions.

Community members are sought from Singleton, Muswellbrook or surrounds for immediate appointment to the UHMD. The selected representatives will work alongside community, industry and local government representatives to achieve positive community outcomes for all.

To be eligible, applicants must have a general awareness of contemporary issues, a willingness to provide a balanced view with a progressive and collaborative attitude.

The appointees will also demonstrate a willingness to contribute to the work of the UHMD, its strategic framework and objectives. In their applications, nominees should include a brief description of their current and past community involvement and explain why they would like to play a lead role in the UHMD. Positions on the UHMD are not remunerated.

Applications close Thursday, February 28, and should be emailed to: info@nswmining.com.au

SIMPLEX

Simplex offers a variety of high quality products that are well suited across a wide range of diverse markets and applications.

From a basic hand pump and cylinder combination, to an advanced multi-point lift system, Simplex is able to meet your needs.

Contact Pacific Hoists for more information.

✉ sales@pacifichoists.com.au

☎ (02) 8825 6900





BACK TO THE FUTURE

FUTURE OF MINING AUSTRALIA RETURNS TO SYDNEY IN MARCH WITH THE FOCUS ON TECHNOLOGY, DEVELOPMENT, SUSTAINABILITY AND STARTUPS.

Taking place this year from March 25 to 26, The Future of Mining Australia conference addresses the long-term goals of our industry with an agenda that has been created by bringing together an advisory board of select leading mining experts and new talent. With over 500 professionals expected to attend at the Sofitel Sydney Wentworth, it will cover a vast range of content spanning right across the entire mining life cycle with technology, development and sustainability at its core, focusing on areas of development and the challenges ahead as mining begins to look beyond the now and plan for the future.

Key questions the conference will seek to answer include:

Disruption in mining: Which social, geo-political, economic forces and market trends are reshaping the mining industry?

Influencing change: How are mining companies re-focussing their efforts on creating a united workforce this is driven by innovation, problem-solving, collaboration and transparency?

Value chain optimisation: How is the industry challenging itself to develop new ideas, out-of-the-box strategies and next level optimisation?

Game changing equipment: Which new technologies are and

will be being applied across the mining lifecycle to change the future of mining?

The human effect:

How can we continue to liberate our workforce through new job creation, training and development?

These topics and more will be delivered by industry experts and the conference is well supported by an extensive array of solution providers specialising in mining equipment, engineering, analytics, digitisation, consulting, advisory and artificial intelligence. These include Caterpillar, Komatsu, Epiroc, Honeywell, Inmarsat, Motion Metrics, Howden, MST Global, Vega, Earth AI and Petra Data Science.

IT WILL ALSO FOR THE FIRST TIME ALLOW STARTUP COMPANIES TO SHOWCASE THEIR LATEST INNOVATIONS, GAME CHANGING EQUIPMENT AND NEW SOLUTIONS VIA THE FUTURE OF MINTECH.

This one-day program is dedicated to an audience of METS (Mining, Equipment, Technology and Service Providers), Mining Companies and Industry Investors. In partnership with startup experts, Unearthed, the Future of MinTech will deliver a uniquely valuable opportunity for startups and industry alike to discuss the key opportunities, success' and areas of development for startups in the Mining Sector.

For those who are interested in discussing new ideas, concepts and strategies the Future of Mining is a great opportunity to join like-minded peers in sharing your thoughts. <https://australia.future-of-mining.com/>



One of our region's most anticipated events is the Muswellbrook Cup held at Muswellbrook Race Club on Friday March 29.

We have Double Entry passes to give away to 5 lucky readers so you can enjoy a day out with your mate to this premier event.

FOR YOUR CHANCE TO WIN, SIMPLY SMS: MBKCUP, YOUR NAME, AND YOUR EMAIL ADDRESS TO 0438 474 290.

Limit of one entry per person. LTPM/19/04020

BY SUBMITTING AN ENTRY, YOU CONSENT TO THE USE OF YOUR CONTACT DETAILS FOR PROMOTIONAL AND MARKETING PURPOSES.

MESABI SERVICE CENTRE

COXONS

NEWCASTLE

Specialists in Radiators, Aftercoolers & Oil Coolers

- › Nosecone and Service Exchange
- › Mining, Industrial and Rail
- › Agricultural and Earthmoving
- › On Highway Trucks and Automotive

1300 269 667
www.coxonsgroup.com.au

ROCKHAMPTON

TOWNSVILLE

NEWCASTLE



CLUB CHAMPION

WELL-KNOWN LOCAL MINER, CLUB SINGLETON PRESIDENT AND ALL-ROUND GOOD GUY, KERRY HARDY, PROUDLY SHOWED ME AROUND THE CLUB HE LOVES AND CALLS HOME WHEN NOT ON THE JOB AT MT OWEN MINE.

At our recent catch up at the newly renovated Club Singleton, Kerry took us through his work history and his passion for the club and community.

Kerry has been in the coal industry since 1979. He started at Liddell Underground and stayed for a couple of years before moving on to Foybrook Underground as a plant operator (A machine man is what they called it in those days) on the shuttle cars and stayed until it closed in 1987.

He then went back to Liddell until 1988 before moving to Drayton open cut in 1989 until 1994. From there he joined a company called D M L Resources who were mining the Mount Owen lease. Thiess took over in 96 and he's been there ever since as an operator on trucks and drills. "Hopefully I'll get a few more years out there before I retire," Kerry told us.

A great family man, his other great joys are wife Gai, his four kids and partners (two of whom happen to be miners) Benjamin, Georgina, Miranda, Isabella and two grandchildren Vienna and Orlando.



ON THE CLUB KERRY TOLD US HOW HE AND GAI USED TO COME TO THE CLUB FOR NEW YEARS EVE AND THE PLACE WOULD BE PACKED, "THIS WAS BEFORE WE WERE MARRIED. AFTER A FEW YEARS IT STARTED TO FALL AWAY, AND THE PLACE WOULD BE DESERTED. I MADE A COMMENT TO DAVE NICHOLS AT THE TIME WHO WAS A DIRECTOR AND HE SAID THEY WERE LOOKING FOR A FEW IDEAS AND ASKED ME IF I WANTED TO GET ON THE BOARD - THAT WAS IN 2007."

"To be honest in 2007 the doors could have closed on the club. At the time according to Clubs NSW, 44 clubs had closed and about 22 were looking to amalgamate to survive. It was pretty bleak for the club industry and especially bowling clubs," he added.

KERRY AND MANY OTHERS WERE NEVER GOING TO LET THE CLUB CLOSE.

"I saw the club's position and potential in the community as pretty important, and that there was a future. It was a huge and exciting challenge. At our first board meeting I thought - What have I done?"

"We were in pretty bad shape, but we survived. We threw caution to the wind and we did things we probably shouldn't have, but it paid off and we're still here today. I've been President since 2009 which is a great privilege. It's been a great turnaround," said Kerry proudly.

"Renovations on the new Club Singleton commenced in January last year and seven or eight hundred thousand has been spent. It has delivered a fresh new look to our members who really deserved it for their amazing support."

THERE WAS ONE OTHER IMPORTANT ASSET THAT KERRY SAID WAS IMPORTANT TO POINT OUT AS IT WAS THE BEST - THE GREAT STAFF.

Kerry told us that at their core they are a bowling club and always will be, it's their heritage and something they are immensely proud of. To support that though they have many other vital facilities such as the restaurant and new café. They will also be hosting functions such as weddings and conferences.

WITH THINGS LIKE BAREFOOT BOWLS AND FIRST-CLASS ENTERTAINMENT, THERE'S ALWAYS SOMETHING FUN HAPPENING.

"It's important to move with the times and stay current. We want to continue to be an important part of the Singleton community, keep evolving and build membership. The feedback so far has been wonderful. Supporting the community is also very important and the club gets behind Hunter Life Education and the Clontarf Foundation supporting indigenous children," Kerry said proudly.

The success of this place comes down to a great board, management and most importantly great staff that all help to ensure happy members and the ultimate community club.

On my way out the door Kerry had the last word, "It's a great club, come on down and have a beer, a pizza and gelato!"





PARTY IN THE BACK IS BACK

MULLET FEST RETURNS TO THE CHELMSFORD HOTEL AT KURRI KURRI ON FEBRUARY 23.

Last year's inaugural Mullet Fest was a roaring success and Chelmsford Hotel Licensee Laura Johnson is hoping this year's event will beat it.

"Last year we had 168 entrants and over 800 people attend the event throughout the day. We hope this year for an even bigger turnout," Laura said.

Mullet Fest gives people of all ages the opportunity to strut their stuff, from babies to oldies, men and women, if your hairstyle is about business at the front and a party at the back, then this is the event for you.

CATEGORIES INCLUDE VINTAGE MULLET, EVERYDAY MULLET, EXTREME MULLET, GRUBBY MULLET AND THE BEST MULLET OF THE DAY WILL TAKE HOME THE TITLE OF THE GREATEST MULLET OF ALL. THERE'S ALSO A PEOPLES' CHOICE AWARD AND AN INTERNATIONAL CATEGORY FOR ONLINE VOTERS. ALL CATEGORIES ARE OPEN TO BOTH MEN AND WOMEN.

Laura told us the whole idea for Mullet Fest came from committee member Sarah Nichols as a way to give a boost to a struggling town. "The idea was to hold an event that would create a big cash injection, not just for our hotel, but for all local businesses in the area and I'm proud to say it did just that. The whole town benefited and so it would be fantastic if we could do the same again this year. I have to thank everyone on the committee and all the volunteers who have worked so hard. We couldn't do it without them."



STEEL BIN TRUCK AND DOGS FOR HIRE
Satellite Tracking • Mine Spec Trucks

www.teamrsg.com.au • 02 4015 0990

BASALT HARD ROCK	Various landscape products & construction materials AVAILABLE IN BULK	SANDS
STEMMING & CONCRETE AGGS		TOP SOIL
ROADBASE		ROUND DECORATIVE STONE



GET DIGGITY!

Thanks to heavy equipment experts Components Only, we have a 1:50 scale Hitachi ZX470LCH-5 Hydraulic Excavator to give away this month.

FOR YOUR CHANCE TO WIN SIMPLY SMS: COMPONENTS ONLY, YOUR NAME, AND YOUR EMAIL ADDRESS TO 0438 474 290.

Limit of one entry per person.
LTPM/19/04020



COMPONENTS ONLY

WWW.COMPONENTSONLY.COM.AU



BIGLIFT

CRANES AND HEAVY HAULAGE

- › LOCALLY OWNED AND OPERATED
- › OFTEN CHALLENGED – NEVER BEATEN
- › MORE THAN JUST YOUR LOCAL CRANE COMPANY
- › WE CAN OFFER RIGGER HIRE, SUPERVISOR HIRE, OPERATOR HIRE, CRANE HIRE, HEAVY HAULAGE, GENERAL TRANSPORT, TILT TRAY SERVICES, HARD STAND FACILITIES.

PH (02) 6541 0033

www.bigliftcranes.com.au

13-15 Enterprise Cres Muswellbrook



KONICHIWA!

THANKS TO MITSUI COAL HOLDINGS AND BENGALLA, LOCAL GIRL PIPER TYE WAS THE RECIPIENT OF A SCHOLARSHIP THAT SAW HER SPEND 4 WEEKS IN JAPAN.

Every year Mitsui Coal Holdings offers fully funded scholarships for two lucky students to spend 4 weeks in Japan learning the Japanese language and living with a local Japanese family. Valued at \$7,500 each, these scholarships are an opportunity of a lifetime.

When Bengalla operator Richelle Tye heard about the program through work, she knew straight away it would be something her daughter Piper could benefit from.

“Because I work for Bengalla, this meant that Piper was eligible to apply for the scholarship. I am so grateful for Bengalla for providing this opportunity. When I heard Piper had got it, it was like a dream come true,” Richelle said.

Bengalla CEO Cam Halfpenny said we are proud to be involved in the program and be able to extend the opportunity to the families of our employees.

“Bengalla were really excited that Piper was successful in winning the scholarship and we are truly

grateful to Mitsui for the wonderful opportunity,” Cam said.

Piper told us that the experience was life changing. “The language barrier was tricky at times, but it was a very valuable learning experience. I’ve been studying Japanese for 5 years and I love the culture and the language. The highlight of the trip was going to Tokyo. I loved it. We took a tour of Mitsui’s headquarters which was great, and we even got to visit Disneyland.”

Piper said that she couldn’t thank Bengalla and Mitsui enough for allowing her the opportunity.

“Everyone at Bengalla has been so supportive, they’ve been great. They even organised gifts to take over to give to the host family. It’s a huge deal to have someone local selected out of the whole of Australia. I have made life long relationships that I am forever grateful for. I recommend to anyone who’s thinking about an exchange program to go for it. It’s the most rewarding and enjoyable experience.”



‘AVE A LAUGH WITH

One day The Lord came to Adam to pass on some news. “I’ve got some good news and some bad news,” The Lord said.

Adam looked at The Lord and said, “Well, give me the good news first.”

Smiling, The Lord explained, “I’ve got two new organs for you. One is called a brain. It will allow you to create new things, solve problems, and have intelligent conversations with Eve. The other organ I have for you is called a penis. It will give you great physical pleasure and

allow you to reproduce your now intelligent life form and populate this planet. Eve will be very happy that you now have this organ to give her children.”

Adam, very excited, exclaimed, “These are great gifts you have given to me. What could possibly be bad news after such great tidings?”

The Lord looked upon Adam and said with great sorrow, “You will never be able to use these two gifts at the same time.”

MALABAR COAL

UNDERGROUND METALLURGICAL COAL

Malabar Coal Limited is an independent, Australian owned mining company holding significant coal and infrastructure assets in the Hunter Valley. The company is engaged in the development of the Maxwell underground longwall project to produce predominantly metallurgical coal, with other substantial projects in the pipeline. The company’s highly experienced and very well-regarded board and management team has a successful track record in major mine developments and operations. The position of General Manager – Development & Operations provides a first-class career opportunity along with excellent career progression prospects with the growth of the company. For further company and project information visit www.malabarcoal.com.au

Location: Hunter Valley, New South Wales

GENERAL MANAGER DEVELOPMENT & OPERATIONS

The **General Manager – Development & Operations** is site based and is accountable in the first instance for the cost effective and timely construction of the Maxwell underground longwall project, including design and equipment specification. In the operations phase the General Manager will develop and lead team members across mining, engineering, processing, safety, environmental and commercial functions to ensure successful and sustainable operations. The position reports to the Executive Chairman. Specific responsibilities include:

- Delivery of the Maxwell underground longwall project;
- Development of a can-do, collegiate culture;
- Effective and constructive relationships with external stakeholders;
- Development and management of programs and budgets;
- Commercial negotiation;
- Compliance with health, safety and environmental requirements;
- Board reporting.

This position plays a fundamental role in contributing to the development and success of the company’s mining operations, and calls for senior leadership experience in highly productive longwall operations. Additional experience in the delivery of substantial projects is highly desirable. Tertiary qualifications in Engineering or related disciplines are essential. The position will appeal to a strategic thinker with excellent project management and operational skills together with the energy, enthusiasm and interpersonal skills to succeed.

A most attractive remuneration package is negotiable to secure the preferred candidate. Persons interested in pursuing this opportunity are invited to forward details of experience and qualifications to

John Ferris, BA (Hons), MAPS, FAICD, Psychologist, via: pa.jf@ferrismc.com.au

FERRIS MANAGEMENT CONSULTANTS PTY LTD

Level 6, 12 Creek Street, Brisbane, Qld, 4000

Telephone 07 3236 4544 Facsimile 07 3221 7122 www.ferrismc.com.au

THE NATIONALS for Regional NSW

“Michael Johnsen isn’t afraid to **stick up for coalminers.** No matter what the inner-city greenies want.”

– Graham White, Upper Hunter Coalminer

VOTE  **Michael Johnsen**
UPPER HUNTER ELECTORATE



Authorised by D. Layzell
2428 Clarence Town Road, Clarence Town NSW 2320



LASSIE COME HOME

ONE OF THE GREAT THINGS ABOUT OUR REGION IS WE'RE ALWAYS THERE TO LEND A HELPING HAND. OR PAW.

Over the holidays my brother's new purebred poodle escaped from Muswellbrook. Social media went into overdrive. Despite multiple sightings and days of searching, the pooch still evaded capture.

Then a phone call from Josh Tuckerman in Aberdeen. Low and behold, the little bugger had followed the train corridor all the way from Muswellbrook to Aberdeen. After 5 days and what must have been almost every person in Aberdeen looking for him, Archie was finally captured and returned home tired, bloodied paws and very hungry.

The township of Aberdeen needs thanking and commending. They went above and beyond for a furry friend. In return a \$300 donation was made to the Aberdeen Pre School.

FESTIVE SPIRIT

SAMARITANS CHRISTMAS LUNCH IN SINGLETON WOULD NOT HAVE BEEN POSSIBLE WITHOUT THE GENEROSITY OF OUR LOCAL COMMUNITY.



150 Christmas lunch meals were served with 40 volunteers lending a helping hand. There were plenty of activities for children, music by the Noel Riley Band and of course a visit by Santa, with everyone receiving a gift.

Event Coordinator, Kim-Cherie Davidson said, "We are so grateful to have had a great partnership with the Anglican Parish of Singleton, some keen volunteers and hugely generous sponsors and supporters."

"Mt Owen Complex and Yancoal Mt Thorley sponsored our event and we couldn't have done it without the generous support of and The Bloomfield Group Foundation, Singleton RSC Snooker Club and the Rotary Club of Singleton," Ms Davidson said.

"JUST ONE EXAMPLE OF OUR COMMUNITY'S GENEROSITY - I RECEIVED A CALL FROM BULGA OPEN CUT MINE ON CHRISTMAS EVE, GIVING US 55 HAMS. IT NEARLY BROUGHT ME TO TEARS TO KNOW THERE IS SUCH CHRISTMAS SPIRIT HERE."

"This event is just not possible without local support who are committed to help those who are doing it tough. We wanted to ensure that no one had to experience Christmas alone or go without during the festive season. We'll be back again next year. It's been so amazing to see the community rally around this event and support us - we can't thank you enough."



COMMUNITY GIFT

THIS MONTH THE COMPLETE PARTS AND @ THE COALFACE \$500 COMMUNITY GIFT GOES TO THE KURRI KURRI LITTLE ATHLETICS CLUB

With child obesity a big problem in our country, it's more important than ever to encourage our kids to join their local Athletics club and get fit while having fun. There are almost 500 clubs participating across Australia with the season running from

September to March for kids age 3 to 17.

For many of the small-town clubs funding is difficult to come by and they rely mainly on volunteers and donations from local businesses. Kurri Kurri is just one of these clubs that is struggling. So next season don't just sign your kids up, but get in there and volunteer so we can make sure these small clubs continue to operate.



www.facebook.com/pg/kurrikurrielittleathletics

RECRUITING NOW!

► Dump Truck Operators



**CHANDLER
MACLEOD**
UNLEASHING POTENTIAL

- Max Term Contracts
- Muswellbrook location
- Both skilled and semi skilled roles available
- \$46.89 per hour
- Lifestyle roster
- Plenty of OT available

02 6572 5900

 nswminingjobs.com.au

GLENCORE GRANTS

SINCE 2012, GLENCORE HAVE INVESTED MORE THAN \$1.5 MILLION IN SUPPORTING OVER 150 JUNIOR SPORTS ORGANISATIONS IN NSW AND QUEENSLAND WITH THEIR JUNIOR SPORTS DEVELOPMENT PROGRAM...

AND YOUR CLUB COULD JOIN THE LIST.

The Glencore program is a fantastic way to encourage the health and fitness of our kids by providing funding to local clubs and organisations. Organisations like Branxton Greta Little Athletics Club. Glencore provided them with a \$7500 grant through the program to purchase much needed new equipment including adjustable hurdles, high jump mats and accessories.

TYPES OF PROJECTS ELIGIBLE

- Projects that increase the capacity of the organisation to allow more children to participate in regular sport over the mid to long term.
- Projects that have an injury prevention or safety focus.
- Projects that have a health focus beyond the general health benefits associated with sports participation.
- Purchase of major pieces of equipment that will have a life of a number of years and support participation or club growth.
- Hosting of events that are regional, state or larger that contributes to the economy of the local community.
- Projects that increase the organisations capacity for coaching, officiating, administration or safety.
- Projects that demonstrate a high level of cost effectiveness.

Club President John Hamson told us that the club had all but folded two years ago and was in a very poor state, with a desperate need of some new equipment.

“The children couldn’t participate in certain events due to the lack of equipment or practice for rep carnivals. The club also accommodates three local primary school’s athletics carnivals and they too were affected,” he said.

JOHN SAID APPLYING FOR THE GRANT WAS VERY EASY TO DO AND THEY WERE ECSTATIC WHEN THEY FOUND OUT IT HAD BEEN ACCEPTED.

“The kids love the new equipment and it’s really made a big difference. We’ve been able to run training and coaching sessions and their performance has improved so much that this week we are sending our largest ever team to regional championships. We are so grateful to Glencore and I recommend to all clubs out there that need a helping hand to apply this year. I know we will!”

GLENCORE RUNS TWO ROUNDS OF GRANTS IN THE PROGRAM EACH YEAR IN BOTH NSW AND QUEENSLAND. THE FIRST ROUND OF NSW GRANTS FOR 2019 ARE OPEN NOW AND WILL CLOSE ON MARCH 3.

The program supports clubs and associations with projects that address the long-term needs of junior (U18) participants. Communities associated with Glencore’s operations will be prioritised, such as Cessnock (LGA), Mid-Western (LGA), Muswellbrook (LGA) and Singleton (LGA).

Clubs from these areas who have not previously received funding through this junior sports development program during the past two years are encouraged to apply, although past recipients are also welcome to apply.

DON'T MISS OUT ON THIS AMAZING OPPORTUNITY

Applications are made online at: <https://glencore.smartygrants.com.au>



HARD WORK DELIVERS

PIT PERSON OF THE MONTH

Who are you and what's your role at Pit Express?
Cindy Crothers – Warehouse distributor.

How long have you been with the company?
10 months – Loving it so far!

What's the best thing about the job and the company?
The people.

Why are they are so successful?
The way the business is run, the people and especially the drivers.

Tell us something personal about yourself?
I have one daughter and two sons and I love to go four-wheel driving on the beach.

PH 0427 55 7000
www.pitpatrol.com.au
3/17 ENTERPRISE CRS, SINGLETON | PO BOX 100 SINGLETON NSW 2330
PH: (02) 6575 2800 FAX: (02) 6575 2810

SYDNEY ★ BRISBANE ★ ADELAIDE ★ MELBOURNE ★ WOLLONGONG ★ TAMWORTH ★ MACKAY ★ PERTH

Mechanical

LARGE MINING EQUIPMENT MECHANICAL REPAIRS

WORKSHOP SERVICES:

- MIDLIFE REBUILDS
- ENGINE CHANGE OUTS
- DEFECT REPAIRS
- EQUIPMENT COMPLIANCE

FIELD SERVICES:

- PLANT MECHANICS, AUTO ELECTRICIANS, HV ELECTRICIANS
- AIR CONDITION SERVICES

PH +61 (2) 6540 9400
mrssg.net info@mrssg.net

39-43 Thomas Mitchell Drive
Muswellbrook NSW 2333 Australia



THANKS TO SOME HELP FROM BULGA COAL, SINGLETON KIDS HAVE BEEN TAKING PLAYTIME TO NEW HEIGHTS AT THE BRAND NEW \$2.8 MILLION ARCHITECTURALLY-DESIGNED RIVERSIDE PARK ON JOHN STREET.

This all-new state of the art playground was funded in part by \$700,000 from Bulga Coal under its Voluntary Planning Agreement with Singleton Council and was officially unveiled just in time for the school holidays and has proven to be a hit with people of all ages.

The brightly-coloured park boasts multi-storey slides from two architectural towers, a sky bridge, water play, rock climbing and even Wi-Fi bins. The Riverside kiosk is also open for business, serving coffee and tea, smoothies, milkshakes, muffins, cakes and slices.

BULGA COAL OPERATIONS MANAGER GEOFF KELLY, MAYOR OF SINGLETON, CR SUE MOORE, AND MEMBER FOR UPPER HUNTER MICHAEL JOHNSEN ATTENDED THE OPENING OF THIS GREAT ADDITION TO THE SINGLETON AREA.

Mayor of Singleton, Cr Sue Moore said the park was another feature that made John Street a destination for locals and visitors from neighbouring local government areas.

“This playground is second to none with something for children of all ages. A lot of thought has also gone into making this a park that’s not just fun but safe too, with features such as soft fall and fencing. The park is another fantastic addition for John Street in a continuation of the Town Centre improvements that began with funding from the NSW Government’s Resources for Regions fund, and a great achievement for our community by Council and the mining industry working together,” she said.



EAT RIGHT

WWW.UPPERHUNTERFRESHMEALS.COM.AU

ASN IS THE LEADING PROVIDER OF SPORTS NUTRITION AND SUPPLEMENTS IN AUSTRALIA AND ARE GIVING AWAY A WEEK’S WORTH OF NUTRITIOUS MEALS TO A LUCKY READER.

Upper Hunter Fresh Meals provide fresh, quality meals made to order to meet your individual goals. Choose \$200 worth of meals from any of their ranges which include Weight Loss, Muscle Gain or Lean & Tone. With the convenience of online ordering and delivered right to your door, these guys make it easy to eat right.

FOR YOUR CHANCE TO WIN, SIMPLY SMS: ASN MEALS, YOUR NAME, AND YOUR EMAIL ADDRESS TO 0438 474 290.

Limit of one entry per person. LTPM/19/04020

BY SUBMITTING AN ENTRY, YOU CONSENT TO THE USE OF YOUR CONTACT DETAILS FOR PROMOTIONAL AND MARKETING PURPOSES.



“100% of our surpluses are used to benefit our Members”

Can your bank do that for you?

Unity Bank is proud to be a Member Owned financial institution that offers a wide range of financial products and services to our Members and their families. We offer a banking alternative to the big 4 that is solely Member focused. There are no external shareholders, so this means any surplus is returned to Members in the form of better interest rates, products and services.

- Home Loans
- Savings Accounts
- Insurance
- Personal Loans
- Credit Cards
- Term Deposits

If you feel it’s time to own your banking, become a Member today!

Contact **Brad Williams** on **0417 005 883**, email mail@unitybank.com.au, call **1300 36 2000** or visit unitybank.com.au



Unity Bank
your bank at work

Unity Bank Limited. | ABN 11 087 650 315 | AFSL/Australian Credit Licence 240399.


Melanie Dagg will invest in schools and hospitals not Sydney stadiums



Melanie
Dagg

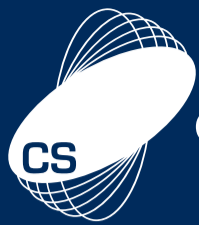
Country Labor for Upper Hunter

 Melanie.Dagg@countrylabor.com.au

 0472 526 076

 facebook.com/melaniedagg

 PO Box 310 Scone NSW
2337



CS Health

PROTECTING INDUSTRY



CS Health offers retired coal mine workers a range of services at no charge.

- Ongoing health surveillance medicals, including chest x-rays
- Access to CS Health gyms during business hours
- A full gym induction and exercise program
- Annual exercise program review

For further information visit or contact:

Singleton
1 Civic Avenue
T: 6571 9900

Speers Point
143 Main Road
T: 4948 3100

www.coalservices.com.au

SHOCK WAVE THERAPY AKA 'The Jackhammer for Tendons'

THE EFFECT OF SHOCK WAVES (ACOUSTIC ENERGY WAVES) ON THE HUMAN BODY HAS BEEN OF INTEREST SINCE IT WAS NOTICED THAT UNDERWATER BOMBS DAMAGED HUMAN LUNGS OF CASTAWAYS DURING WWII.

After some years of research, in 1971 Haeusler and Kiefer in Germany made the first disintegration of kidney stones via shock waves without direct contact which led to the development of the first Lithotripsy machine in 1974. In 1988 the first successful shock wave therapy treatment (SWT) of a non-united fracture in a human was successfully performed in Germany. In the early 1990's SWT was also used successfully for calcific tendon pain in shoulders and then for a variety of problems in tendon, ligaments and other soft tissue disorders

Today Lithotripsy/extracorporeal shock waves is the treatment of first choice for kidney and ureteral stones and has successfully healed millions of people. There has also been a large and growing body of research demonstrating positive treatment effects for many conditions such as:

- Tendon pain disorders
- Plantar fasciitis/ fasciopathy, heel spur
- Gluteus Medius tendonopathy/ bursitis (lateral hip pain)
- Achilles tendinopathy
- Shin Splints (medial tibial stress syndrome)
- Patellar tendinopathy
- Tennis and golfers' elbow (medial and lateral epicondylalgia)
- Biceps tendinopathy
- Rotator cuff tendinopathy

How does it work?

The basic premise of SWT is a stimulation of healing responses in conditions where healing has been slow, stalled or incomplete. As the energy wave is transmitted into targeted tissues there has been demonstrated increased local blood flow, increased cellular metabolism (activity/ release of chemicals),

modulation of inflammation, an analgesic effect from stimulation of nerves and break down of calcific deposits (an abnormal healing response in tendons). There has been no demonstration of detrimental effects at clinical treatment levels.

What to expect from treatment?

Treatment can improve blood and lymphatic circulation, have an analgesic effect and reduce pain, reduce muscle tension and calcification and fibrotic changes (long term). It can also provide a better range of motion, strengthen connective tissue and increase the cell regeneration process.

Are there side effects?

Possible minimal side effects of SWT reported are some short-term pain and discomfort, minor skin irritation and sometimes numbness which all resolve within a short period of time.

The verdict

I first came across SWT a few years ago via professional conferences and trade demonstrations. As an initial skeptic I investigated the emerging literature which appeared to show some promising results and then we trialed a few machines in our clinic for a few months.

I was pleased to find excellent customer feedback from our initial trials which mirrored the clinical studies results. As a result, we purchased a quality SWT machine which we have now used in our clinic

for the past 2 years with many success stories. But don't take my word for it, try it for yourself.

Guy Higgins,
APA Sports and
Musculoskeletal
Physiotherapist

Singleton
and Branxton
Physiotherapy and
Allied Health



WANT TO KNOW MORE ABOUT SWT? CHECK OUT THESE SITES

www.electrotherapy.org/modality/shockwave-therapies-

www.shockwavetherapy.org/about-eswt/physical-principles-of-eswt/



PUSHING THE FATIGUE LIMIT

SHIFTWORK AND FATIGUE GO HAND IN HAND, THERE'S NO AVOIDING IT. THE QUESTION WE HAVE TO ASK AS AN INDUSTRY IS; WHEN IT COMES TO SAFETY, WHERE DO WE DRAW THE LINE ON ROSTERS?

Shiftwork is something that you love or hate and has become an unescapable reality of the mining industry. For most miners, it's the pay packet at the end of the week that keeps them putting up with sleepless nights and long days. While some rosters allow more opportunity for family time, others mean you are constantly missing important events and rarely get to see your family and friends. It's rarely a win win situation.

There are currently several variations of rosters in the valley such as the four panel, the Day/Arvo/Doggie and the so-called lifestyle roster. All of these have many effects not just on the worker's health, but on their ability to operate safely at work. And the roster that's considered the worst? The dreaded 7 on 7 off. This is a roster we don't often see in the Hunter but recently we've been inundated with calls and emails suggesting that this roster could be coming back in force at some of our mines.

OUR INDUSTRY NEEDS TO TAKE A HARD-LONG LOOK AT THE RISKS TO THEIR WORKERS' HEALTH AND SAFETY, AS WELL AS THE SAFETY OF OUR COMMUNITIES IF THIS ROSTER BECOMES COMMONPLACE.

I pose this question; would you want to be driving on the same roads as someone who's just worked seven 12.5 hours shifts in a row? That is then travelling two hours on each side of this to work? Sure, a travel management plan has been signed by someone in these circumstances, but that's only passing accountability.

7 on 7 off rosters will undoubtedly have a great impact on our local communities, setting a precedent for less permanency in our local area ("drive-in, drive-out"). In an isolated location with no impact on a close community and no social licensing it may work, but is it really what we want for the Hunter?

STUDIES SHOW 12HR SHIFT WORK RESULTS IN INSUFFICIENT SLEEP, INCREASING THE RISK FOR REDUCED PERFORMANCE ON THE JOB, INJURIES, OBESITY, A WIDE RANGE OF CHRONIC DISEASES, AND FATIGUE-RELATED ERRORS. LONG HOURS ARE KNOWN TO EXACERBATE UNHEALTHY EATING HABITS AND REGULAR NIGHT-SHIFT WORKERS EXPERIENCE UP TO FIVE TIMES HIGHER LEVELS OF DIGESTIVE DISORDERS.

In general shift work, sleep deprivation increases pressure for the brain to fall asleep. The transition

from wakefulness to sleep is abrupt and rapid and occurs in an on-off-type switch in the brain stem. This can lead to dangerous situations if the brain is under high pressure for sleep and the person falls asleep involuntarily during critical times, such as when driving. Involuntary episodes of microsleep, which are short periods of sleep a few seconds long, can also occur. During microsleeps, the person may appear to be awake (eyes open), but his or her brain will not process information and lapses in attention occur.

So, what's the answer? The issue of rosters is something too hard for us to solve, after all we barely show up to work here! The fact is, there's no easy answers. One thing we do know is there must be collaboration between employers and employees. Before any new rosters are introduced, not just the 7 on and 7 off, all the risks should be openly assessed and weighed against the benefits.

WHEN IT COMES TO ROSTERS, YOU'RE NEVER GOING TO MAKE EVERYONE HAPPY BUT THAT'S OKAY. THE IMPORTANT THING IS TO MAKE SURE EVERYONE IS SAFE.

Tell us what you think at admin@thecoalface.net.au

MAY 2019 MTEC EMPLOYEE GIVEAWAY

Join us for your chance to take home a 2019 KTM 300EXC this May!

Are you a Plant Mechanic, Auto Electrician or equivalent?

Would you like to work with a well-regarded Company on major TIER 1 equipment shutdowns in the Hunter Valley region OR at our off-site facility completing large scale rebuilds and component changeouts?

With various rosters to choose from, we want to hear from you! Please email your resume to:

MTec.mechanicalservices@bigpond.com

Winner will be drawn during the MTEC toolbox talk in May. To take home this Enduro Weapon you need to be an MTEC mechanical employee before the start of May 2019.



WORKSHOP LOCATED @
30 Enterprise Cres,
McDougalls Hill, SINGLETON
(02) 6572 2819



SPECIALISING IN EARTHMOVING & HEAVY EQUIPMENT MAINTENANCE BOTH ON AND OFF SITE, SHUTDOWNS, MACHINE REBUILDS AND COMPONENT CHANGEOUTS.



TRENDY TROLLEY

Kmart lovers are going crazy for this foldable beach trolley. They are using it to carry everything from beach toys, to their children, and of course, their beers.

WWW.KMART.COM.AU

COOL TOOL

This 6 in 1 Grill-X Multi BBQ tool will make you the BBQ master! We all know how difficult it is to find anything in your utensil drawer, but now you don't waste an hour searching for your tongs, fork, spatula, bottle opener, corkscrew and knife as it combines all six tools together.



WWW.GRILLX.COM

MOTO MADNESS

This competition KTM 500 enduro bike is the most powerful available. It also happens to be the same type that Toby Price won the 2019 Dakar Rally on. Is it the bike that makes the rider or the rider that makes the bike?

WWW.KTM.COM.AU



Dedicated to helping coal miners

Stuart Barnett is the most experienced coal mining compensation lawyer in NSW with over 28 years practising this specialised area. Over this time, he and his team have helped thousands of coal miners access the compensation and support they rightfully need.

Stuart will explain your rights and take you step by step through the legal process. He wants you to know exactly where you stand and that is why he offers an obligation free chat with him so you get the expert advice you need.



Stuart Barnett
State Practice Group Leader
Accredited Specialist in Personal Injury Law

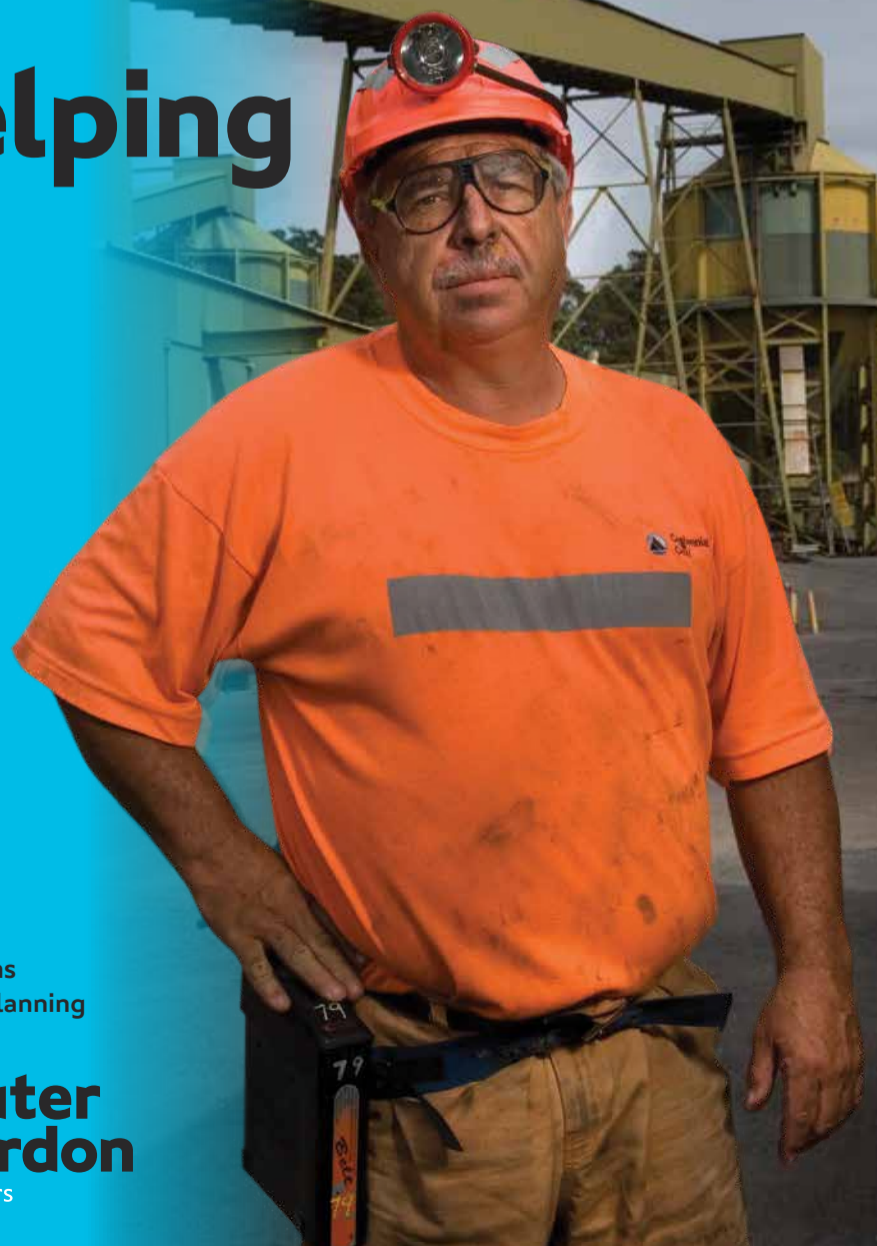
As well as specialising in coal mining compensation law, Stuart and his team can help with:

- + Workers' Compensation + Road Accident and Public Liability Claims
- + Dust Disease & Medical Law + Conveyancing + Wills and Estates Planning

We Win Cases Like Yours, Get in Touch

1800 991 394

Slater Gordon
Lawyers



MAY THE FORCE BE WITH YOU

If Star Wars is your thing then this life-size Stormtrooper standing nearly 2 metres tall will make a great addition to your collectables. Put it on your front doorstep and it's sure to scare away visitors. (Because no-one wants to visit a Star Wars nerd)



WWW.SIDESHOWTOY.COM



WINDOW DRONE

WWW.AERONES.COM

No need to worry about those hard to reach windows with this window washing drone! More time to sit back and relax while you let the drone do the cleaning for you.

STAY HIGH & DRY

There's nothing worse than setting your tent up on the ground only to discover there are rocks poking up right under your sleeping bag. This 3-person tree house tent will guarantee that won't happen and will also make sure nothing sneaks into your tent while you sleep

WWW.AMAZON.COM

RR Double R

EQUIPMENT REPAIRS

The established and trusted name in mining.

Double R is an award winning "One Stop Shop" offering New Machinery Sales, and Trade Services to the Mining, Transport, Agricultural, Marine, and Construction industries. Authorised sales and service dealer for Deutz Fahr, and Dieci Telehandlers.

- HEAVY EQUIPMENT REPAIRS
- HEAVY VEHICLE REPAIRS
- UNDERGROUND HARD ROCK EQUIPMENT REPAIRS
- RMS AUTHORISED INSPECTION STATION
- LIGHT VEHICLE REPAIRS
- AUTO ELECTRICAL
- AIR CONDITIONING REPAIRS AND SERVICING
- TRUCK AND LIGHT VEHICLE WHEEL ALIGNMENTS
- LABOUR HIRE
- ENGINEERING AND MACHINING
- BOILER MAKING AND FABRICATION
- STRUCTURAL CONDITIONING AND PAINTING TO SPECIFICATION
- MOBILE LINE BORING
- LIQUID NITROGEN
- UNDERGROUND COAL SERVICES

Why should you engage Double R?

TEAM	A GREAT CULTURE COMMITTED TO THEIR CLIENTS
ONE STOP	EXTENSIVE SERVICES AVAILABLE AT THE DOOR STEP
ADAPTIVE	DEVELOPS CUSTOMISED SOLUTIONS TO THE NEED
RESPONSIVE	DELIVERING AND EXCEEDING EXPECTATIONS
RELIABLE	CONSISTENCY OF DELIVERY

HUNTER VALLEY
02 6571 4249
huntervalley@dbl.com.au

LEINSTER
08 9037 3804
leinster@dbl.com.au

GUNNEDAH
02 6780 9601
gunnedah@dbl.com.au

KARRATHA
08 9185 2699
karratha@dbl.com.au

MUDGEES
02 6372 3257
mudgee@dbl.com.au

dbl.com.au





THE MITCH DAY MEMORIAL TEAM

1. LUKE DAY
2. JOSH DAY
3. BAZ TAUFUA
4. HARRY SIEJKA
5. LIAM FORAN
6. JAMES BRADLEY
7. MATT HAY
8. JORDY HAMMOND
9. KEVIN PICTON
10. CADE BONEY
11. MICK DEACON
12. NATE PRINCE
13. LUKE MERCER
14. JO MCCORMACK
15. CHRIS WALTERS
16. WEBBY SAUNDERS
17. KYLE WILCHER
18. CRAIG ANDERSON
19. BEN BAKER

KURRI 9'S MEMORIAL SIDE

WE ALL KNOW OUR MAN ANDREW HUGHES FROM A PLUS CONTRACTING LOVES HIS RUGBY LEAGUE, SO IT COMES AS NO SURPRISE THAT HE HAS SPONSORED THE A PLUS CONTRACTING KURRI 9'S RUGBY LEAGUE DAY ON SATURDAY FEBRUARY 24.

The day is not just about getting out to play some rugby though. It's also about supporting a great cause. Many of you will know the Day family, especially the boys (Josh, Mitch and Luke) whose names are synonymous with Rugby League and community work in the Group 21 and Newcastle Rugby League areas.

Mitch unfortunately lost his battle with cancer on December 29, 2017 and his brothers have taken on a mission to increase awareness, raise money and keep Mitch's Legacy alive. This year they are entering the Mitch Day Memorial team into its first sporting event, the A Plus Contracting Kurri 9's.

"WHEN MITCH WAS DIAGNOSED WITH BOWEL CANCER, WE KNEW NOTHING ABOUT IT. WHAT THE SIGNS AND SYMPTOMS ARE, AND EVEN THAT YOUNG

PEOPLE COULD GET IT. THROUGHOUT MITCH'S THREE MONTH FIGHT HIS ONLY MISSION WAS TO CREATE AWARENESS FOR OTHERS SO THEY DIDN'T HAVE TO GO THROUGH WHAT HE DID," JOSH DAY TELLS US.

"To continue his ideas and legacy we were going to start a charity, but we thought a better 'voice' for us was to create a team where we can spread his ideas and proudly wear his name."

Because Mitch was a massive North Sydney Bears fan, they decided to name the team after them, including the same colours and traditional strip and for their first tournament they decided to play at the Kurri 9s.

"It's close for our families and friends to attend and celebrate his life and

mission. Our sponsors like CPR Plant Repairs, Ostermann Mining, La Bella Beauty at Muswellbrook, Hydroflow and ABS Asbestos have all been amazing and we want to an event that they could all bring their staff too," Josh said.

JOSH TOLD US THAT THEY'VE BEEN FORTUNATE TO HAVE LIAM FORAN AND CADE BONEY AGREE TO PLAY FOR THE BEARS, BOTH GREAT PLAYERS AND GREAT MEN. EVERYONE WHO PLAYS FOR THE BEARS IS REQUIRED TO DO A POST ABOUT BOWEL CANCER TO HELP SPREAD THE AWARENESS AND ALL THE MONEY RAISED WILL GO DIRECTLY TO BOWEL CANCER AUSTRALIA.

And we'll be seeing plenty more of the Bears playing, with their next goals being Aberglasslyn and Thailand 9s at the end of the year. The team at the Coalface wish all teams competing all the best and encourage a standing ovation for the memorial team when they take the field.

LET'S RACE!

ONE OF THE UPPER HUNTER'S 'MUST ATTEND' SOCIAL EVENTS IN AUTUMN IS INCORPORATED INTO A PROGRESSIVE AND EXCITING FESTIVAL IN MUSWELLBROOK IN LATE MARCH, THE CUP CARNIVAL.

The Muswellbrook Cup has moved from its Spring date to transform the ever growing Muswellbrook Cup Carnival and invigorate the town providing an unforgettable experience at one of the most picturesque country racing tracks in Australia.

"Our Cup Day has seen increases in crowd numbers over the last two years and it would be amazing to continue to get that local support again this year to continue the days revival over recent times," said Muswellbrook Race Club General Manager Duane Dowell.

THE MUSWELLBROOK CUP IS ON FRIDAY MARCH 29 THIS YEAR AND IS A HALF DAY GAZETTED HOLIDAY IN THE MUSWELLBROOK SHIRE. THE CUP IS THE PINNACLE FOR THE SHIRE'S RACING CALENDAR, THOUGH IT IS A BIG WEEK FOR THE CLUB WITH THE COUNTRY CHAMPIONSHIPS KICKING OFF ON SUNDAY 24.

"Country Championships Day also highlights the Muswellbrook area to people from outside our region. Both days are as much about getting more people to visit our town to stimulate local businesses as it is the great country racing vibe," says Dowell. "I'm excited about the new date and where it will take us in the coming years!"

There are still hospitality packages available, including the very popular Great Northern Rails Bar which includes gate entry, racebook, lunch and drinks package all for a low cost of \$170. Check out the website for other packages or to book your ticket.

WWW.MUSWELLBROOKRACECLUB.COM.AU



MECHANICALLY MINDED



MADER
NEW SOUTH WALES

HEAVY EQUIPMENT MAINTENANCE



RAPID RESPONSE

PREVENTATIVE MAINTENANCE

SHUTDOWN SERVICES

madergroup.com.au

CONTACT US NOW @ EMAIL mader-nsw@madergroup.com.au

CAREERS @ MADER P: (02) 4052 9195 E: jobs-nsw@madergroup.com.au

Are you following us? [f](#) [@](#) [t](#) [in](#)



COALFACE UNITES WITH GROUP 21

IN EXCITING NEWS FOR OUR LOCAL FOOTY FANATICS, @ THE COALFACE HAS STRUCK A SPONSORSHIP DEAL WITH THE BENGALLA GROUP 21 COMPETITION FOR THE 2019-2020 SEASONS.

@ The Coalface is proud to be a part of the local Rugby League scene, and this year will see a permanent fixture of the competition in our magazine, along with updates from the clubs via our website.

As part of the agreement, the clubs have the opportunity to have one game a weekend commented via our online link, making it easier for shift workers and those out of the area to be able to listen to all the action live. It's a first in best dressed, with the club that books the game also having that first-grade game videoed with commentary.

Along with the commentary, there will also be a weekly YouTube video featuring the commentary team and guests from each club. One thing is for sure, the dynamics of Group 21 is increasing in exposure, which is great for all involved.

IT ISN'T THAT LONG UNTIL KICK OFF TO THE SEASON, WITH THE SCANLON SHIELD JUST AROUND THE CORNER.

Singleton's signing and early announcement of Frank Paul Nuusausala has added hype to the Greyhounds and with big numbers at preseason training their season is looking very promising.

Denman's strategic signing of Adam Grech as Captain Coach has seen a number of players transition with

him to the Devils for 2019. The Devils have been out of the finals for the past few years, though the very smart signing of Grech and recruitment of players might be enough to see them finish in the top 4.

Scone were last year's premiership winners and have done well with their retention from last year's side and have had large numbers at training. 2019 sees the return of Topliss, Austin, Hawkshaw, Curry, Adams and club



favourite John Johnson. The Thoroughbreds are in good shape looking at the year ahead.

Aberdeen's Ben Baker set the competition alight last year and has stepped into the Captain Coach position for 2019. The departure of one the Tigers top blokes and quality player, Josh Schmiedl, will leave a void for Baker, though the return of Trent Walker to the gold and black will add strike power to the attack.

Muswellbrook have signed North Coast representative halfback Mick Henry, who played a few games in 2018 before injury saw him sidelined for the remainder of the year. Ramone Jackson who had a big 2018 will lead the forward pack, with a number of youngsters coming through the ranks

stepping up this year.

Greta-Branxton Colts have signed former player Steve Nevin as Coach for the First-Grade side. Last season was not one of their best seasons from a results point of view, though it was a gutsy effort by all players. 2019 they will have to be out of the barriers early.

Merriwa Reserve Grade are under pressure to perform, with the Ladies side taking out the CRL 9's and raising the bar. The Magpies always seem to pull together a competitive side and 2019 may see them finish back in the semis.

Murrurundi Mavericks, the team from the foot of the Rangers, we are hearing big things are happening behind the scenes with Captain Coach Corey "Squirt" Holman retaining last year's players and recruiting well in the off season. The Mavericks are definitely going to be one too watch this season.

Stay posted to our Facebook and Website for more information. The Footy Fever boys will be keeping you up to date with the happenings through the week, and commentary will be streamed straight to you in 2019 thanks to the Coalface and Bengalla Group 21.

THE SHOUT'S ON US!

WIN A CASE OF XXXX GOLD TO CELEBRATE THE GOOD TIMES THANKS TO THE CLUBHOUSE.



For your chance to win, simply SMS: **THE CLUBHOUSE**, your name and your email address to **0438 474 290**.

Limit of one entry per person.
LTPM/19/04020



SPORT @ THE COALFACE IS BROUGHT TO YOU BY THE CLUBBY AND LOCAL LIQUOR



BY SUBMITTING AN ENTRY, YOU CONSENT TO THE USE OF YOUR CONTACT DETAILS FOR PROMOTIONAL AND MARKETING PURPOSES.

S.E.S.

LABOUR SOLUTIONS



A true labour hire partner looking at long term labour solutions over short term gains and the value that our people can provide through an innovative and people-focused approach.

- BE PART OF A TEAM THAT CARES!
- SAFETY ABOVE ALL ELSE
- INTEGRITY IN EVERYTHING WE DO
- TEAM WORK AND A SENSE OF FAIR PLAY
- HONESTY AND TRANSPARENCY

www.sesls.com.au | 0436 621 490 | nsw@sesls.com.au

Find us on 

Race Ace!

NEWS JUST IN'

ALEX RACED IN THE ASBK TEST WEEKEND AT PHILLIP ISLAND WITH GREAT RESULTS!

SAY HELLO TO SINGLETON LAD ALEX KENWORTHY-JONES, A NEW RISING TALENT JOINING THE RANKS OF AUSTRALIAN MOTORCYCLE ROAD RACING.

For someone who's not even old enough for a driver's license (he's only 15!), Alex has been riding motorbikes for over a decade. Yes, he was riding motorbikes when most kids were getting on their first push bike with training wheels. "For as long as I can remember I've always loved riding and would jump on the bike any chance I got." Alex said.

But this is no joyriding gig for Alex, for him it's a serious sport that he's already dedicated most of his life to. He's just finished a six-year apprenticeship in flat track racing (both oil track and dirt track), and has already proven to be a prodigy with some substantial wins under his belt.

ALEX HAD A SUCCESSFUL 2017 SEASON WINNING TWO DIRT TRACK CLUB CHAMPIONSHIPS AT KURRI KURRI JUNIOR MOTORCYCLE CLUB, THE CLUBMAN (ADULTS) TRIALS CLASS AT DENMAN MOTORCYCLE CLUB, THE CASEY STONER CUP AND SECURING A SECOND PLACE AT THE AKUBRA CUP.

In 2018, Alex decided to focus on his road racing and won the inaugural 2018 NSW Short Course Road Racing State Championship Junior Class and the North Coast Road Racers Club Junior Championship. All these successes and more have led to Alex securing a position to compete in Motorcycling



and if he performs well it could lead to Alex getting into the international circuit and competing in the 2020 Asia Talent Cup.

"THIS YEAR I WANT TO FOCUS ON GIVING IT MY ABSOLUTE ALL IN THE OCEANIA JUNIOR CUP," ALEX TOLD US. "I ALSO WOULD LIKE TO RACE IN SOME AUSTRALIAN TITLE EVENTS. EVERY RACE COMPLETED IS ANOTHER STEP TOWARDS MY GOAL OF BECOMING AN INTERNATIONAL RACER."

Australia's Oceania Junior Cup, where Alex will compete against the best junior riders in all of Australia. Over 6 rounds at some of the best tracks throughout the eastern states, these young riders will battle it out each on identical Yamaha YZF-R15 motorcycles.

Being selected for the Oceania Junior Cup is a huge deal. It's recognised by Dorna, the company who runs Moto2, Moto3 and MotoGP

As yet, Alex does not have a sponsor and has been supported solely by his parents. "They've been there every step of the way and I can't thank them enough. I really hope I'll be able to pick up a sponsor soon and take some of the pressure off them."


With the Oceania Junior Cup receiving televised coverage it's only a matter of time before he's snapped up by a sponsor. But we'd love to see this talented local lad supported by a business from our region, or perhaps even a coal mine!

BRINGING JOBS AND INVESTMENT TO THE LOCAL COMMUNITY

MALABAR  COAL

Malabar Coal is an independent Australian-owned mining company based in NSW. With the backing of the local community, our underground coal development – the Maxwell Underground Project – will deliver significant benefits to the families and businesses based in the Upper Hunter.

The Maxwell Underground Project means:

350 
new, direct jobs and many more indirect jobs for many decades

\$55m 
Per year in wages

 Better rehabilitation outcomes

 Certainty that there will never be an open-cut mine within EL 5460

\$700m 
per year in export income for NSW

\$1.3b 
in royalties over initial 1/4 century

We will also provide ongoing financial support for local businesses and community groups as demonstrated over the last five years

If you would like to know more, please email admin@malabarcoal.com.au or call (02) 8248 1272



Could this be the way of the FUTURE?

Albeit in my early forties, I've always enjoyed completing jigsaw puzzles on my holidays at the beach; big 3000 piece ones that I can complete during downtime with my family. However, frustrated with the dining table taken up with thousands of little puzzle pieces, my wife has in recent years transitioned me to Lego Technic aka Lego for big boys.

Not one to complain, I've enjoyed reverting back to the memories of childhood and building creations from the 'ground up', the most recent being the Volvo Concept Wheel Loader ZEUX.

In stirring my grey brain matter, it got me thinking about the evolution of machines and the extent that we've been

willing to challenge the status quo to achieve greater outcomes through the adaptation of technology and design. In the instance of Volvo's futuristic collaboration with Lego, the creation of an autonomous wheel loader with adjustable counter weight, four-wheel steering, variable wheel base and mapping drone.

CHANGE RARELY OCCURS IN ONE LARGE LEAP. WHAT APPEARS TO BE SPONTANEOUS AND EASY, IS OFTEN AS A RESULT OF MANY SMALL STEPS UNDERTAKEN OVER EXTENDED PERIODS OF TIME.

Take Komatsu's cabless autonomous truck (dubbed Komatsu's Innovative Autonomous Haulage Vehicle) displayed at the 2016 Las Vegas MINExpo. A culmination of learnings drawn from their autonomous 830E and 930E haul trucks, this 'next gen' machine is an exclusively unmanned vehicle.

By 'simply' removing the cab, Komatsu allowed themselves the ability to bring forward design concepts that previously could not have been contemplated under a traditional haul truck format.



WITH WHAT APPEARS ONE MINOR STEP CHANGE, KOMATSU ACHIEVED THROUGH THE MASTERING OF AUTONOMOUS HAULAGE, THE ABILITY TO ADOPT FOUR-WHEEL STEERING, EQUALLY DISTRIBUTE THE TRUCKS LOAD ACROSS ALL FOUR WHEELS AS WELL AS CREATE A MACHINE THAT CAN MOVE AT THE SAME SPEED FORWARDS AND BACKWARDS, EFFECTIVELY ELIMINATING THE NEED FOR K-TURNS WHEN LOADING AND UNLOADING.

Operating more like a tram than a truck, this rig shuttles its loads between A and B, decreasing circuit times and (I would imagine) vastly reducing maintenance costs associated with the wear and tear of components. With a gross weight of 416 tonnes and payload of 230 tonnes, this concept truck is pitched at the big end of town and provides our industry a very real glimpse of what we can expect in the coming years (all with a turning radius of 15.9 metres).

Which got me thinking again (this time with a cool ale and cricket playing in the background), is our pursuit of short-term financial gains stifling our ability to grow through the experimentation of ideas.

IN CHASING TONNES ARE WE REDUCING OUR ABILITY TO CHANGE? MAYBE, JUST MAYBE, THE CHINESE WERE ONTO SOMETHING WITH THEIR ANCIENT PROVERB 'A JOURNEY OF A THOUSAND MILES BEGINS WITH THE FIRST STEP' THEN AGAIN, PERHAPS I SIMPLY HAD ONE TOO MANY BEERS.

If you'd like to know more, visit YouTube and search 'Komatsu's Innovative Autonomous Haulage Vehicle' likewise, 'Volvo CE ZEUX' for the Lego nerd in all of us.

Process Equipment Wear Prevention Asset Management Engineering and Mechanical



Providing industrial solutions since 1978

www.hicservices.com.au



WATCH THIS

The Hamersley Underground Miners Watches are built in solid stainless-steel cases with glass case backs. They use an automatic movement that has no battery or electrical power source or reserve.

This lack of electrical current satisfies the Mine Safety requirements for dangerous goods in underground mines that may contain methane gas. So where with a quartz watch you need a Mines Approved Watch, with a non-battery automatic watch it is by nature, mine safe.

www.minerswatch.com

HEAVY LIFTER

MLA Vulcan Heavy Forklift Trucks range from 10 - 50 tonnes capacity with a range of product focused on the materials handling aspects of for mining and ports.

The Vulcan range includes Tyre Handlers Heavy Forklift Trucks, Empty Container Handlers, Dedicated Container Handlers and Reach Stackers with specialised variants available for many other specialist applications.

www.Hunterlift.com.au



PUMPED!

When pumping slurry, gland seals can be prone to leakage. This is often caused by inadequate maintenance, incorrect lubrication application, poor quality gland water, or a combination of all three. Plant operators should be vigilant against gland seal leakage as it can cause premature bearing assembly failures, leading to downtime.

Using Weir Minerals Warman Accumin lubricators decreases the risk of lubrication related failures and extends the life of the pump. Accumin® lubricators deliver small amounts of grease at regular intervals for a seal purging effect. This allows any contaminated grease to be pushed out before it can further penetrate the bearing assembly.

www.minerals.weir



Mining for the future



OPERATIONAL EQUIPMENT HIRE

WITH 24 HOUR SUPPORT
All of our equipment (which includes our LED lighting towers) comes with 24 hour breakdown assistance, is either low hours or brand new and can be hired wet or dry. We also supply relevant safety gear and information and carry out regular servicing.



ONSITE LABOURING SOLUTIONS

We supply onsite mechanical staff, onsite auto electrical staff, operators, as well as general labour. Every member of our carefully selected labour team comes site inducted and has extensive experience in their field.



AUTOMOTIVE SERVICES

INCLUDING WORKSHOP WITH 8 BAY SHED AND GROUND PIT
Our highly-trained team covers electrical, mechanical and air-conditioning maintenance and repairs for all types of vehicle. We stock an extensive supply of parts, and also offer other services such as free pickup and delivery.

Phone: 02 6543 2307

Web: www.nwminingcompany.com.au

Lot 14 Thomas Mitchell Drive Muswellbrook NSW 2333

ABN/ACN: 48147724552/147724552



COOL CRIB

The Kinchrome K7020 Heavy Duty Miners Bag 7 Pocket will keep your crib together and the rest of your stuff too.

The bag is as tough as they come with Fire Retardant Construction, Double Reinforced Base and Ends and a Heavy-Duty Shoulder Strap and comes with plenty of safety features like the Reflective Lid Strip and Blue/Red Colour For High Visibility.

www.gettoolsdirect.com.au



WET AND WILD

Regularly working through challenges associated with water-based infrastructure is tricky and hazardous with few options to do the job. The answer is amphibious excavators.

An amphibious excavator is a type of machine that can perform dredging while afloat in shallow water. The excavator is adapted for removing silty clay, tailings dam work, clearing silted trenches, swampland operation, and shallow water operation and way more versatile than traditional barge-mounted dredgers and long reach excavators.

1800 SWAMP PRO



TWO PIECE

Austin Engineering has released their new two-piece excavator bucket. The bucket assembly features well-defined reusable upper and consumable lower structures designed

for quick and safe bucket change-outs during scheduled maintenance intervals.

The reusable upper section has been designed to maintain overall structural integrity of the bucket assembly for a predetermined service life through multiple change-outs of the lower, consumable, section.

www.austineng.com



39-43 Thomas Mitchell Drive
Muswellbrook NSW 2333 Australia
+61 (2) 6540 9400
info@mrssg.net
mrssg.net

UNRIVALLED MINING SERVICE CAPACITY & SUPPORT



WHAT WE DO

We provide a range of support services to enable mining companies to focus on maximizing production.

HOW WE DO IT

We listen and understand our customers needs, and deliver a service which exceeds expectations. We'll do what we say we'll do. We'll reduce downtime and extend the life of customer equipment. We only hire the best people to ensure a superior 24/7 available service. We'll ensure customer compliance is met and maintained.

WHY WE DO WHAT WE DO

We aim to enhance sustainability of mining in the Hunter Valley.

ONE STOP MAINTENANCE AND SUPPORT SERVICES FOR THE MINING INDUSTRY

MRS Services Group Production Support offers a comprehensive range of services which focuses on maximising production and minimising downtime for its customers to aid the overall efficiency of core activities, and therefore increasing production capacity.

MRS Services Group Production Support provides a broad range of resources that directly support mining across every phase of the mining cycle.

- > Mine Rehabilitation
- > Mine Services
- > Wet and Dry Plant Hire
- > Industrial Services
- > Poly and Water Reticulation
- > Fabrication
- > Mechanical
- > Automotive
- > Lineboring
- > Electrical
- > Maintenance Support

SAFETY | CUSTOMER SERVICE | QUALITY | RESPECT | INTEGRITY & ACCOUNTABILITY

TAKE TWO TOBY

AFTER BECOMING THE FIRST AUSTRALIAN TO WIN THE DAKAR RALLY THREE YEARS AGO, TOBY PRICE HAS TRIUMPHED AGAIN, WINNING HIS 2ND DAKAR TITLE IN PERU.

We don't have enough room in this magazine to list all the titles Toby Price has won throughout his racing career, nor do we have the space to list all the injuries he's sustained along the way. This is a guy that puts it all on the line every time he gets on his bike.



on the road ahead."

Thanks to his consistent riding, Toby ended the 10-day event with a 9-minute lead over defending champion Matthias Walker who placed second. "When I won the first one it was a dream come true and then to do it again, I'm still pinching myself!" Toby said about his win.

Although he now resides on the Gold Coast, Singleton will always claim Toby as one of ours. He moved to Singleton with his family in 2003, which was also the same year he signed his first contract with Kawasaki.

"I REALLY ENJOYED THE TOWN, SINGLETON'S ALWAYS HAD PLENTY OF OTHER PEOPLE TO RACE AND TRAIN WITH. YOU COULD SAY IT'S BEEN A BIT OF A HUB FOR MOTOR SPORTS. I WANT TO THANK EVERYONE DOWN IN THE HUNTER FOR ALL THEIR SUPPORT AND FOLLOWING ME ALL THESE YEARS. IT'S A GREAT AREA AND EVEN THOUGH I'M NOW SETTLED UP ON THE GOLD COAST YOU NEVER KNOW, I MAY BE BACK ONE DAY."

For now, Toby's enjoying his win and focusing on his recovery. "I had my 2nd surgery on my wrist three days after landing back in Aus and I'm taking it easy while it heals. I just spent Australia Day with family and friends here on the Gold Coast and I can't think of a better way to celebrate my win than that."

We've not seen the last of Toby, that's for sure. He's hoping to be back in form to compete in the Finke Desert Race in June, where we've no doubt he will continue to make us proud.

Only weeks before he was set to race in his 5th Dakar, Toby fractured his wrist leaving many doubting if he would be able to race, let alone perform well. Even Toby had his doubts. "Yeah with my injuries I didn't have high expectations. But when you are in the thick of it, you're just focused on the job in front of you and getting it done," Toby said.

And get it done he did. Persevering despite his injuries, Toby focused on taking each day as it came. "The conditions in Peru were so tough, heading there I didn't know what to expect. About 70-80% of the course was sand and it made it very difficult to make up time. Conditions would change overnight so you had to be on your guard the whole time and just stay focused



Mining & Site Specific

We spec to suit your needs



We offer a diverse range of vehicles on request. To find out more call us today!

1300 879 289

Visit thrifty.com.au



PH +61 (2) 6540 9494
mrssg.net awhalley@mrssg.net

3 Thomas Mitchell Drive
Muswellbrook NSW 2333 Australia
MVRL54007

Automotive & Glass

- REGO INSPECTION STATION (PINK SLIP) FOR LIGHT AND HEAVY VEHICLES
- LIGHT VEHICLE LOG BOOK SERVICING AND REPAIRS
- HEAVY VEHICLE SERVICING AND REPAIRS
- TRAILER SERVICING AND REPAIRS
- WELDER AND GENERATOR SERVICING AND REPAIRS
- FULL BRAKE SERVICING AND REPAIRS
- AIR CONDITIONING RE-GASSING AND REPAIRS
- LIGHT AND HEAVY VEHICLE AUTO ELECTRICAL SERVICES
- TYRE SALES, FITTING AND BALANCING - KUMHO TYRES
- GVM UPGRADES, 4WD LIFT KITS
- VEHICLE FIT OUTS AND MINE COMPLIANCE WORKS
- WINDSCREENS AND CAR BODY GLASS ALL MAKES AND MODELS CARS, 4WD'S, UTES AND TRUCKS
- GLASS FOR MINING EQUIPMENT DOZERS, SHOVELS, DUMP TRUCK, SCRAPERS, EXCAVATORS AND AGRICULTURAL MACHINERY
- HOME, SHOP AND OFFICE GLAZING
- AGRICULTURAL MACHINERY

FISHING FEVER

WITH THE CHRISTMAS MAYHEM OVER AND DONE WITH HOPEFULLY WE FINALLY SEE THE POINTY END OF THE PELAGIC'S. IT'S BEEN VERY HOT AND VERY COLD DEPENDING ON THE FASHION OF FISHING THAT HAS TICKLED YOUR FANCY OVER THE CHRISTMAS BREAK.

OFFSHORE

Lame is probably an understatement to describe the start of the pelagic season off the Hunter/Port Stephens coast. It would seem the relentless strong North east winds and the raging current out wide on the shelf has pushed the fish past us to the south or held them further north in the better pockets of water inshore.

Things should definitely start to heat up as we move into the middle of February as traditionally a shift in wind direction away from the NE brings warmer water in and the current on the shelf backs off allowing bait to build on the edge of the shelf..... Fingers crossed.

It's not all doom and gloom for the offshore scene though, especially for those chasing a few table fish with a few nice Snapper and Trag to be found on most of the deeper reefs. Squid have also been a sure thing around Broughton and in the open bays along the coast.

Kingfish are on the cards as well as a few nice kings were spotted in the shallows tight into the rocks while diving the hazy green stuff hunting Lobsters during a recent rock hope.

INSIDE

The Estuaries have been fishing well with Newcastle Harbor Jewies being the stand out at the moment with Ryan "Mulloway" Hassett landing a few cracker fish. With the annual Mullet run set to start in a few weeks for those chasing Jewies the fishing should only get better.

Flathead across all the local Estuaries are also being found in great numbers reacting well to soft



RYAN HASSETT WITH A JEWIE LURED FROM THE DEPTHS OF NEWCASTLE HARBOUR.

vibes and plastics with smaller lighter weighted offerings proving to be deadly in the inshore river systems.

Inside the bay around Shoal bay and Lake Mac at the drop over has been living up to its very Squidish standards with



YOUNG GUN: 12-YEAR-OLD YOUNG GUN ASHTON PERRY WITH HIS MANGROVE JACK AT BOYNE RIVER

SEND US A PIC OF YOUR YOUNG GUN TO WIN A \$50 BCF VOUCHER IF IT GETS PUBLISHED!



the tasty little morsels showing up in huge numbers.

BEACHES

Whiting and Jewies are probably the most successful target species to be gearing up for from the beaches as we roll through Feb.

Keep floatin' - Thrifty's

TRUCKFIT

Ute and Canopy Specialists
General-Custom Fabrication

/ Truckfit
P (02) 4932 8421
truckfit.com.au

95 Kyle St
Rutherford NSW 2320
info@truckfit.com.au

STEEL TRAYS ALUMINIUM TRAYS/CANOPIES MINESPEC
GENERAL/CUSTOM FABRICATION STEEL SALES



- BEST QUALITY BUILT BODIES AROUND
- CAN HANDLE BULK MINE SPEC ORDERS
- 100% LOCALLY BUILT IN THE HUNTER
- STANDARD & CUSTOM BUILDS TO SUIT ANY NEEDS

NSW DISTRIBUTOR FOR THE FAMOUS OSTRICH WING AWNING
NO POLES NEEDED, ONE PERSON CAN SET UP WITH EASE IN UNDER 1 MIN

AE ALFABS

0412 074 079

DELIVERING ONSITE BLASTING AND PAINTING SERVICES WITH SAFETY, QUALITY AND THE ENVIRONMENT AS PRIORITIES.

- Project management services
- In-house NACE certified Inspectors
- Mine site experienced blast and painters
- Scaffolding and encapsulation services
- Dustless blasting equipment

FOR YOUR NEXT PROJECT GIVE THE TEAM @ ALFABS SERVICES A TRY - WE WANT LET YOU DOWN.

ALFABS GROUP HUNTER VALLEY WOLLONGONG MACKAY

www.alfabs.com.au



- PROTECTIVE COATING
- ENGINEERING
- SITE SERVICES
- EQUIPMENT HIRE
- LOGISTICS
- MINING
- RAIL

QUIRKY CUISINE

VINCENT ST KITCHEN AND BAR IS A NEW ESTABLISHMENT IN CESSNOCK THAT BRINGS STYLE AND ORIGINALITY TO THE TYPICAL PUB OR CLUB SCENE.

The old Ex-Services club on the main street of Cessnock has undergone some major refurbishments to bring you a new space where you can grab a bite to eat with the family or catch up for a beer with mates while you have a punt.

The minute you walk in the doors you can tell they've put some real effort into creating an atmosphere that is modern, fresh and just a little quirky.

I'm all for a good pub meal, but the standard pub fare can get pretty boring. This place is worth visiting just to check out some of the eclectic meals on the menu. All the dishes are reasonably priced, except the 800g Chicago Cut for those who are serious about their steak.

WITH DISHES INSPIRED BY ALMOST EVERY CUISINE YOU CAN NAME, FROM INDIAN TO ASIAN, TO HEARTY AMERICAN DISHES AND AUSSIE FAVOURITES, THE MENU HAS SOMETHING THAT WILL APPEAL TO EVERYONE.

I took it upon myself to order as many dishes as I could, not because I'm a glutton, but so I could give a fair and honest review.

First, I had to try the Southern Chicken and Cheddar Waffle with sour cream, bacon bits and maple syrup. A savoury waffle? Mind blown! Every mouthful was different.

Despite my taste buds being totally confused about what was happening, I gotta say I loved it and recommend this as a must try dish.

Next up was the Fish Taco with chipotle, charred corn, kiss peppers and slaw. Great flavours though a little messy and more ended up in my lap than in my stomach. Then on to the Arancini balls with salsa verde, shaved parmesan and aioli. Definitely the best balls I've tasted in a long time.

Finally, I tried their Pork Belly Bites with sticky soy, crispy garlic and spring onion. Finger licking good or even if you prefer to use a knife and fork, you'll still find them delicious.

IF NONE OF MY CHOICES APPEAL TO YOU DON'T WORRY, THERE'S PLENTY MORE TO CHOOSE FROM INCLUDING, SMOKED BEEF BRISKET, GRILLED NAAN, BAO BUNS, INDIAN

CHICKEN TACO, GLAZED LAMB RIBS, PASTRAMI SPICED SALMON AND THE LIST GOES ON.

To wash it down they've got all your standard fare including beers on tap, but you must give their cocktail list a go. My recommendation is to finish off your visit with a Barking Spider. It's one spider that I want to bite me.

The verdict? This place has some exciting menu options if you're after something a little different. The atmosphere is great, casual but with a touch of flair. The service was fantastic, and we were made to feel welcome the minute we walked through the doors until we staggered back out. I'll definitely be back soon. See you there!



Supply Solutions is the go-to supplier for industrial supplies in the Hunter Valley. We're here to make your working life just a little easier.



We can help with:

- ☑ Mining Equipment
- ☑ Construction Equipment
- ☑ Auto Workshop Equipment
- ☑ Tools
- ☑ Vending Systems
- ☑ Workshop Supplies
- ☑ Storage
- ☑ Bolts and Fasteners
- ☑ Protective Clothing
- ☑ Cleaning and Hygiene Products

INNOVATION + PARTNERSHIP + PERFORMANCE

Contact Dee Carter Area Manager on 0417 124 263

www.supplysolutionsgroup.com.au



PIE POLITICS

PIEMINISTER



AS STRAYA'S BEST LOVED POLITICIAN, I AM SUPREMEY QUALIFIED AS THE ELECTIONS COME AROUND TO COMMENT ON THE SAD AND SORRY STATE OF EVERY VOTE GRABBING GRUB OUT THERE THESE DAYS. OH, HOW I LONG FOR TIMES PAST.

It brings tears of sadness to my eyes and a lump in my throat when I think of how bad Aussie politics has become. I long for the days of past when our leaders were lovable rogues as opposed to self-serving scumbags.

A RETURN TO THE POLITICAL GLORY DAYS IS WHAT'S NEEDED IN MY OPINION.

There was a time in this great wide brown land when politicians could be trusted, and if they couldn't be trusted at least they were honest enough to admit it or dumb enough that everyone saw through their bullshit but loved them for it anyway. Back in the day, so called corruption came harmlessly packaged in brown paper bags with maybe enough cabbage to be able to afford a few extra beers down the pub or in extreme cases maybe a new pool to help the kiddies keep the scorching summer heat at bay at home. Nothing too over the top and just enough to

grease the wheels of progress and commerce or allow the halls of justice to flow smoothly.

My two favourites in order are; a silver fox that could drink the nation under the table while charming the pants off your missus and a bumbling career criminal come polly who couldn't string two words together - our beloved Bob Hawke and the pumpkin scone loving Sir Joh Bjelke-Petersen.

I spent many a weekend on the piss with both and behind closed doors they behaved exactly the same as they did in public - appallingly.

In Hawkey we had a leader who was in touch with the Australian people because he had literally touched up and charmed the pants off the female half of the population and had a beer with the blokes who made up the rest. We shared many a pie after a night on the turps in the lodge. His love for the various Gold Medal Hunter versions I took

down for him was legendary amongst his closest advisors. His favourite of course was the 'The Pride of Aberdeen' that came out of Crofty's kitchen.

As for Sir Joh well he was a different character. Every couple of months or so an overweight and sweaty member of his team would arrive in a cheap black polyester suit and reflective sunnies and slide a brown paper bag across the bar. That was my cue - it was pie time. I would point the Kingswood north and visit Queensland with a bag of Blakeney's of Maitland.

MY ADVICE TO THE CURRENT LOT IS TO LOOK TO THE PAST TO SEE YOUR VISION FOR THE FUTURE, KISS BABIES, PINCH BUMS, GIVE THE PEOPLE WHAT THEY WANT AND KEEP THE BROWN PAPER BAGS COMING FULL OF CASH AND THE OCCASIONAL MEAT BAG.

Keep coal strong, pies hot and the beers cold...Vote 1 Sol!

Clubhouse HOTEL SINGLETON

BEER O'CLOCK

WIN 3 LARGIES OF SHEAF STOUT AS FEATURED IN THIS MONTH'S BEER REVIEW COMPLIMENTS OF THE CLUBHOUSE.

FOR YOUR CHANCE TO WIN, SIMPLY SMS: BEER'S ON US, YOUR NAME, AND YOUR EMAIL ADDRESS TO 0438 474 290.



BY SUBMITTING AN ENTRY, YOU CONSENT TO THE USE OF YOUR CONTACT DETAILS FOR PROMOTIONAL AND MARKETING PURPOSES.

WIN!



BOWDLER'S BEER REVIEW

@ The Coalface beer expert
Richard Bowdler brings you this month's beer review.

SHEAF STOUT

Name: Sheaf Stout
Made: Victoria, Australia by Carlton United Brewery
Info: This stout has been around forever and is an Australian icon. It's a proper English style stout with a distinctly Aussie twist - enough hops for a cracking bitter finish.
Cost: \$7.20 for a longneck
Alcohol: 5.7%
Color: Black as midnight
Nose: Malty and sweet
Taste: Roasted malt, smooth

Mouth: Creamy and full bodied like a good black beer
Aftertaste: Unusual and distinctly Australian. A burnt malt hit that gives way to a strong hopsy bitter. Pommy stouts are not as tough as this!
Comments: An individual stout that has stood the test of time in Australia. It starts with a great smooth malty taste like a good English stout then finishes with a healthy burnt malt hops kick. Way more balls than a Tooheys Old, Way more grunt than the Pommy stouts.
Score: 8.5/10





02 6572 2931

1/4 Magpie St, Maison Dieu
email: admin@pro-mine.com.au

Fleet Maintenance Specialists

FULL MECHANICAL & AUTO ELECTRICAL SERVICES

SERVICING THE MINING & PUBLIC SECTOR

EXPERTS IN 4WD & LIGHT COMMERCIALS

SUSPENSION SUPPLY & FITMENT | REGO INSPECTIONS

AIR CONDITIONING | QUALITY PARTS PROCUREMENT




HORSING AROUND

IF YOU WANT TO LEARN TO RIDE A HORSE OR MAYBE GET BACK ON A HORSE AFTER A BAD EXPERIENCE, THEN BYALEE STABLES AT NULKABA IS THE PLACE TO DO IT.

For months my daughter has been hassling me to take her horse-riding, but I've been reluctant to say yes after hearing some horror stories about trail rides gone wrong. Though it's probably my own bad experience of being thrown from a horse when I was a kid that has more to do with it.

BUT THEN A FRIEND TOLD ME ABOUT BYALEE STABLES. I WAS PROMISED THAT IT WOULD TAKE ONLY ONE OF THEIR LESSONS TO FALL IN LOVE WITH HORSE-RIDING.

Byalee Stables is owned and operated by Ann-Maree Lourey and her daughter Dimity. You'd be hard pressed to find more professional and qualified instructors than these two. Their horse-riding lessons cater for all ages and they don't just teach newbies like me, but all the way up to those who want to compete in dressage. They'll even teach you how to care for a horse while they're at it.

When we arrived on a stinking hot day in January, both my daughter and I were a little scared. Okay, so maybe it was just me who was scared. So, I did what any parent would do and made my 4-year-old daughter go first.

At Byalee they've got a wide range of horses and they'll select the best suited for each rider. Despite my daughter's shyness, it didn't take long for Dimity to have her smiling and I could see she's just as good at handling kids as she is horses. Before long, my daughter was trotting around and having the time of her life.

THEN IT WAS MY TURN, AND MY HORSE WAS A LOT BIGGER! ANN-MARIE ASSURED ME THAT I WAS PERFECTLY SAFE. "AFTER ALL WHAT'S THE WORST THAT COULD HAPPEN? YOU FALL OFF," SHE SAYS SMILING. UM? SHE'S JOKING RIGHT?

So, before I can change my mind, I'm up on my horse Jax and the instructions begin. Heels down, strong core, unclench your butt, shoulders back. You're slouching again. Ann-Maree doesn't let up, correcting my form while all the time explaining how to control the

horse and not let it control me.

But guess what? Even though I've found yoga classes easier to master than the correct way to ride a horse, I'm having a ball. I'm not sure what's more exhausted by the end, all the new muscles I've used or my cheeks from the constant smiling.

There's something amazing that happens when you ride a horse. And I'm not talking about the rides that are targeted for tourists where the horse is so used to following the same trail that it doesn't matter what you do, it won't make a difference. On the school horses at Byalee Stables, the horses are trained to respond to even a beginner's incorrect moves. For better or worse, because that's how you learn. I forgot how hot I was, I forgot that I was wearing borrowed boots two sizes too small, I became one with my horse.

OKAY, SO ONE LESSON DIDN'T MAKE ME THE MAN FROM SNOWY RIVER, BUT IT HAS GIVEN ME A NEW APPRECIATION FOR HORSES AND ALL THE OLD FEARS I WAS HARBOURING HAVE VANISHED AND NOW I CAN'T WAIT TO GO BACK AND LEARN MORE. THE ONLY PROBLEM WITH THE WHOLE EXPERIENCE? NOW MY DAUGHTER IS HASSLING ME TO BUY HER A HORSE.



Byalee isn't just for riding lessons either, they also breed, train and agist horses. To find out more check out their website. Saddle up!

<http://byalee.net/>

Stuck with the wrong tool?

Whether a job seeker or employer, navigating through the recruitment process can be daunting. You need the right tools for the right job!

Here at A.I.R Recruitment, we've got the tools, strategies and solutions for all your recruitment and job search needs.

Contact us today.

air
RECRUITMENT

ph 0402 613 510 | airrecruitment.com.au

attract.integrate.retain.

AHA NSW
MOUNTAIN BIKE

KURRI COALFACE

PEDAL

SUNDAY 7 APRIL 2019



REGISTRATION
OPEN NOW

Early Bird Price -
\$70 per person
Includes free t-shirt
Closes 22 Feb 2019



Lee Watts

Shooters Fishers and Farmers Party

Candidate for **Upper Hunter**



I support mining in the Upper Hunter! Because with me,

“Watt You See is Watt You Get.”

Local miners power this state's economy and deserve:

- ✓ More permanent positions – not casualisation
- ✓ More royalties for their communities – not Sydney
- ✓ To remain the leading energy hub of NSW – any new power stations should be built here

I stood beside the workers of Drayton South and I still stand beside the mine workers of the Upper Hunter.



SHOOTERS FISHERS AND FARMERS PARTY



At the end of the day, what matters to you matters to me so let's get in touch.

E | leewatts@sff.net.au M | 0413 036 628

BACK TO WORK WORD SEARCH

- | | | |
|--------------|------------|----------|
| APPOINTMENTS | BOOKS | BOSS |
| CAREER | CLIENTS | COFFEE |
| COMMISSION | COMPUTER | DESK |
| DOCUMENTS | DRIVE | EMAILS |
| FILING | INDUSTRY | JOB |
| MEETINGS | MOTIVATION | NOTEPAD |
| OCCUPATION | OFFICE | OVERTIME |
| PAYROLL | PEN | PHONE |
| PRINTER | READ | STAFF |
| TASK | TRAVEL | WORK |

S	Z	S	N	V	P	K	N	O	T	E	P	A	D	X
K	Y	J	E	H	T	A	S	K	R	O	W	O	P	T
L	K	Z	C	O	F	F	E	E	S	J	C	H	R	Z
U	G	N	I	L	I	F	T	V	Z	U	O	R	I	K
I	Z	Q	F	V	G	U	M	S	M	N	F	B	N	F
F	Y	N	F	E	P	E	I	E	E	O	U	O	T	B
T	B	H	O	M	V	Q	N	P	E	I	I	S	E	Y
A	P	P	O	I	N	T	M	E	N	T	S	S	R	D
P	S	C	R	T	S	R	Z	V	A	A	I	T	C	U
K	A	D	D	R	E	S	T	V	P	P	S	N	K	G
M	I	Y	A	E	M	A	I	L	S	U	T	E	G	E
L	E	D	R	V	S	T	L	M	D	C	A	I	X	S
G	B	A	B	O	O	K	S	N	M	C	F	L	I	U
D	C	E	A	M	L	Z	I	N	F	O	F	C	D	M
O	T	R	A	V	E	L	P	R	G	Q	C	U	E	M

@ THE COALFACE PRIZE WINNERS

VOLUME 3 – NO 3: DECEMBER 2018 - JANUARY 2019

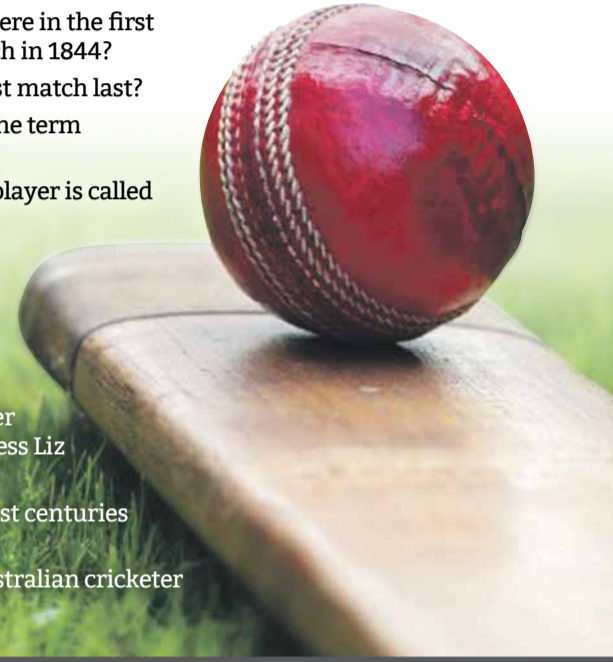
Eliminate Tattoo Removal	Paul Sharp	Components Only	
Biglift Remote		CAT 740B	Grahame Eather
Control Car	Lauren Bendeich	Roberts Meats Raffle	Denise Hodgson
Crawford Boots	Kerry Northey	Beer's On Us	Jacob Caban
A Plus Contracting		Clubhouse XXXX	Nicola Blight
Fuel Voucher	Robert Downes	Café La Luna Cake	Ray Webb

CONGRATULATIONS TO ALL OUR WINNERS!

WINNERS!

@ THE COALFACE TRIVIA THIS MONTH: CRICKET

- Which countries were in the first international match in 1844?
- How long does a test match last?
- What is meant by the term 'sticky wicket'?
- Which Australian player is called 'Mr Cricket'?
- Who had the most memorable moustache in Australian Cricket?
- Which former Australian Cricketer dated famous Actress Liz Hurley?
- Who scored the most centuries for Australia?
- Who is the best Australian cricketer of all time?



ANSWERS
A1: Canada and the United States A2: 5 Days A3: A pitch on which the ball bounces unpredictably
A4: Michael Hussey A5: Merv Hughes A6: Shane Warne A7: Ricky Ponting - 41 A8: Sir Donald Bradman

PROGRAMMED INDUSTRIAL MAINTENANCE

We provide a variety of services to heavy industries – from ports to manufacturing facilities, mines, smelters, refineries, washeries and power plants.

Our maintenance solutions range from supplementary maintenance crews, through to fully outsourced maintenance models. We allow our customers to optimise production and focus on their core business by providing:

- ▶ General maintenance and fixed plant works
- ▶ 24-hour callout and breakdown coverage
- ▶ Campaign and shutdown or turnaround maintenance

Programmed services include:

- ▶ Industrial maintenance
- ▶ Facility management
- ▶ Shutdown management
- ▶ Scaffolding services
- ▶ Workshop services
- ▶ Asset integrity projects
- ▶ Capital works projects
- ▶ Painting and blasting
- ▶ Recruitment and labour hire

WE'RE HIRING



- ▶ Workshop, CHPP & Field Service Boilermakers, Fitters and Diesel Fitters
- ▶ Progressive career development
- ▶ Competitive pay rates
- ▶ A company committed to your safety

Call TODAY to speak with our Recruitment Coordinator Ben on **0438 190 445** or email hmrecruitment@programmed.com.au

We encourage applications from men and women of all ages, including people with disability and Indigenous Australians.



PROGRAMMED

PH 6510 3900
programmed.com.au

Programmed Industrial Maintenance has more than 50 years' experience successfully delivering maintenance, major shutdown, outage solutions, including base and peak load, unplanned and emergency maintenance services for production-critical mine assets and infrastructure, as well as for brownfield, sustaining capital projects.

TUNE TIME!

WE PACKED THE WRANGLERS AND AKUBRA AND HEADED WITH THOUSANDS OF OTHER PEOPLE TO THE TOWNSHIP THAT HOSTS THE COUNTRY MUSIC FESTIVAL, TAMWORTH!

ALTHOUGH IT'S MAINLY KNOWN FOR THE TWO WEEKS OF FESTIVITIES HELD EVERY JANUARY, THERE'S PLENTY OF OTHER THINGS TO SEE AND DO IN TAMWORTH AS WE FOUND OUT. TAMWORTH HAS COME AHEAD IN LEAPS AND BOUNDS AND IS ONE OF REGIONAL AUSTRALIA'S HIDDEN DIAMONDS. HERE ARE SOME OTHER REASONS TO MAKE IT THE DESTINATION FOR YOUR NEXT GETAWAY.

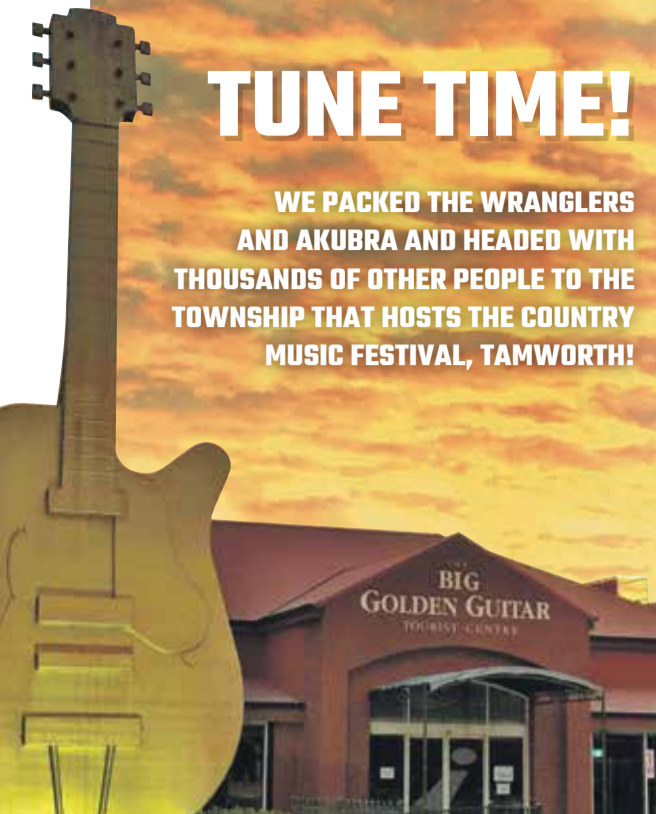
The Golden Guitar

Well this is the obvious one. If you miss this going into Tamworth, then you need an eye check. Situated on the New England Highway, the Golden Guitar is a tourist must for a selfie. Whilst there, head into the Longyard Hotel for a wonderful feed and a look at a truly well set up pub.



Tamworth Marsupial Park & Adventure Playground

Don't get our GM started on this one. With all the mine buffer land in the Singleton and Muswellbrook Shires, it is only a matter of time before someone snaps up this beauty of an idea in our backyard. It's a bush oasis that has a variety of animals, walking trails and playground equipment for all ages. This must be on your destination list if you're travelling with the kids.



Oxley Scenic Lookout

The perfect place for a picnic as you take in the magnificent panoramic views. If you're feeling adventurous, you can walk from the bottom all the way to the top. If you do happen to undertake this feat, please tag us on Instagram - [@the.coalface.magazine](#)



Australian Country Music Hall of Fame

This guitar shaped facility holds everything you ever wanted to know about Australian country music. Check out concert outfits worn by famous musicians, awards and other memorabilia. The Walk A Country Mile exhibit features interactive touch screen displays and memorabilia and is worth checking out.



Tamworth Regional Playground

This playground is the envy of every shire. You could spend an entire day here without once hearing the kids whine that they're bored. Strategically set up for kids of all ages, it boasts a skywalk, three giant slides and four towers. Still want more? There's a bike track, fitness circuit, rhythm wall, splash park and a 3D climbing adventure. Parents can grab a bite to eat from the cafe whilst the kids are running themselves ragged.

THERE'S PLENTY MORE TO CHECK OUT SUCH AS THE POWERHOUSE MOTORCYCLE MUSEUM, TAMWORTH REGIONAL GALLERY, CATHEDRAL NATIONAL PARK PLUS LOADS OF ACTIVITIES FOR THE KIDS SUCH AS PAINTBALL, LASER TAG AND TRAMPOLINING. SO, WHEN ARE YOU BOOKING YOUR NEXT TRIP TO TAMWORTH?

DK HEAVY PLANT SERVICES

13 Blake Field Road MUSWELLBROOK
admin@dkheavyplantservices.com

PH **0447 663 092**

SPECIALISING IN OFFSITE HEAVY MINE MACHINERY REPAIRS AND FABRICATION. REPAIRING LARGE COMPONENTS IN A WELL-EQUIPPED FACILITY.

Servicing heavy earth moving machinery including dozers, diggers, trucks, excavators, drills and draglines.

- Welding and fabrication services
- Breakdown field service
- Component overhauls
- Rebuilds



WE SOURCE AND SELL COMPONENTS GLOBALLY TO KEEP YOU MOVING



**COMPONENTS
ONLY**

1300 726 801
WWW.COMPONENTSONLY.COM
SALES@COMPONENTSONLY.COM