

HUNTER INDUSTRY, COMMUNITY, SPORTS & ENTERTAINMENT

@THE COAL FACE

Vol 3 No 2: November - December 2018

Available online @ thecoalface.net.au



EIMEX SUCCESS

THE INAUGURAL ENERGY, INNOVATION AND MINING EXPO (EIMEX) AT GUNNDAH WAS A ROARING SUCCESS.

PAGE 17



MOWER MADNESS!

WIN A ROVER MACQUARIE LAWN MOWER VALUED AT \$529 FROM OUR MATES AT SINGLETON OUTDOORS.

PAGE 8



BENGALLA BADGERS TRIUMPH

THE BENGALLA BADGERS TOOK HOME THE TROPHY AT THE 5TH ANNUAL A-PLUS CONTRACTING HUNTER VALLEY MINING CHARITY RUGBY LEAGUE COMPETITION.

PAGE 30



PH +61 (2) 6540 9494
mrssg.net awhalley@mrssg.net
3 Thomas Mitchell Drive
Muswellbrook NSW 2333 Australia
MVRL54007

Automotive & Glass

- REGO INSPECTION STATION (PINK SLIP) FOR LIGHT AND HEAVY VEHICLES
- LIGHT VEHICLE LOG BOOK SERVICING AND REPAIRS
- HEAVY VEHICLE SERVICING AND REPAIRS
- TRAILER SERVICING AND REPAIRS
- WELDER AND GENERATOR SERVICING AND REPAIRS
- FULL BRAKE SERVICING AND REPAIRS
- AIR CONDITIONING RE-GASSING AND REPAIRS
- LIGHT AND HEAVY VEHICLE AUTO ELECTRICAL SERVICES
- TYRE SALES, FITTING AND BALANCING - KUMHO TYRES
- GVM UPGRADES, 4WD LIFT KITS
- VEHICLE FIT OUTS AND MINE COMPLIANCE WORKS
- WINDSCREENS AND CAR BODY GLASS ALL MAKES AND MODELS CARS, 4WD'S, UTES AND TRUCKS
- GLASS FOR MINING EQUIPMENT DOZERS, SHOVELS, DUMP TRUCK, SCRAPERS, EXCAVATORS AND AGRICULTURAL MACHINERY
- HOME, SHOP AND OFFICE GLAZING
- AGRICULTURAL MACHINERY



THE REVOLUTION HAS ARRIVED

WE ARE PROUD TO ANNOUNCE THE ALL NEW

G4 EASY TRAY

NOW AVAILABLE IN AUSTRALIA



Minetec engineers have developed a modular body system that revolutionises service, repairs and time. This highly innovative design ensures your cost of ownership is dramatically reduced. After purchasing the G4 you are easily able to adapt spare parts such as sidewalls, headboards and all high wear areas that are monitored and replaceable. With onsite repair capabilities, what was once impossible is now possible.

DEMYSTIFY REPAIR COSTS
PLANNED COMPONENT CHANGE OUT
BUDGET YOUR MAINTENANCE
PREDICTABILITY & CERTAINTY

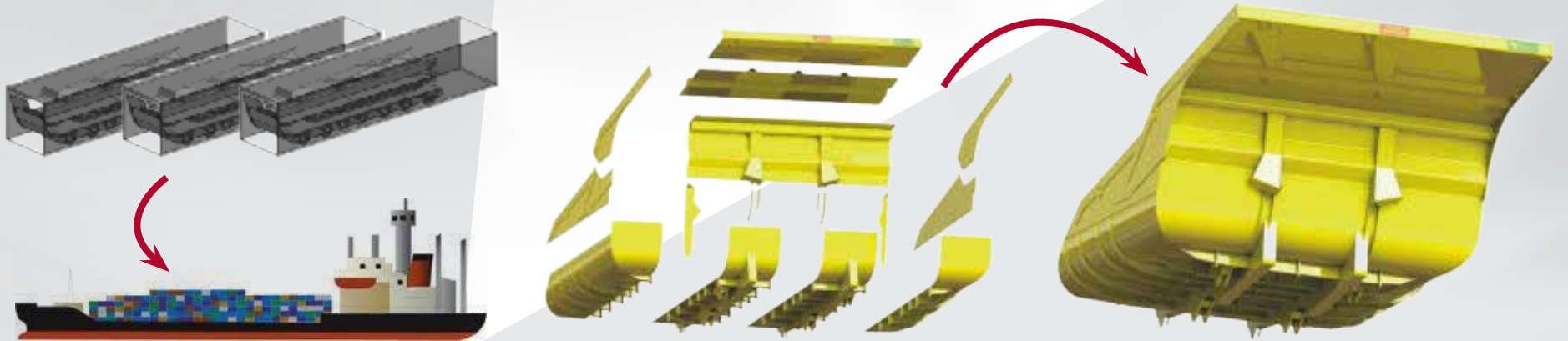


- ▶ 25% SAVINGS ON DOWNTIME
- ▶ MASSIVE REDUCTIONS IN OWNERSHIP COSTS AND REPAIR COSTS
- ▶ MAJOR ONSITE REPAIR CAPABILITIES MEANING LESS COMMUNITY IMPACTS THROUGH COMPLEX AND EXPENSIVE LOGISTICS MOVEMENTS FROM SITE TO WORKSHOP FOR REPAIRS AND OVERHAULS.



PH 0455 552 200

TRANSPORT AND LOGISTICS: MINETEC **EASY TRAY** CONFIGURATION

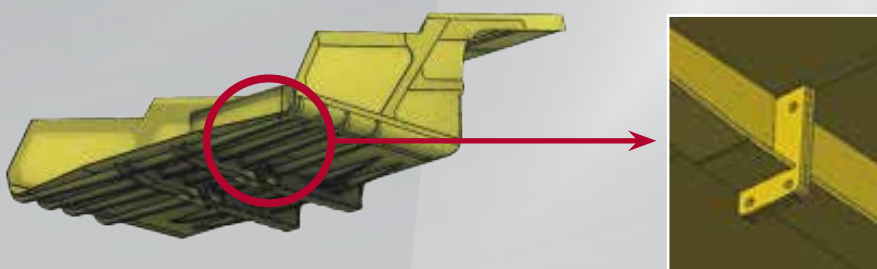


ANGLED SIDEWALLS FOR ACCELERATION OF MATERIAL WHILE UNLOADING



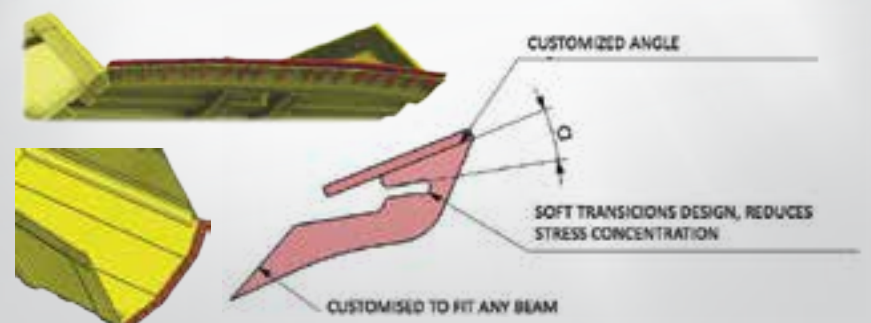
- ▶ REDUCES CARRY BACK
- ▶ CURVED FLOOR-SIDEWALL SECTIONS
- ▶ REDUCES CARRY BACK ISSUES

INNOVATIVE DESIGN FEATURES



- ▶ G4 DESIGN REPLACES UNDERFLOOR BOLSTER BEAMS FOR 'T' DESIGN BEAMS
- ▶ REDUCES CONCENTRATION OF STRESS.

OPTIONAL MINETEC DUCK TAIL DESIGN



THE HEROES AMONG US

EVERY MONTH WE BRING YOU STORIES OF THE AMAZING THINGS THAT PEOPLE IN OUR INDUSTRY ARE DOING FOR OUR COMMUNITY AND WE ONLY SCRATCH THE SURFACE.

I don't know how many times we find out about people in our industry who selflessly and generously give back to the community and whose stories go untold. Either we don't hear about it until it's too late, or they ask us not to publish it as they don't want the limelight, or I bet there's plenty of times we just don't hear about it at all.

THAT'S WHY WE NEED YOUR HELP. IF YOU KNOW A PERSON OR A BUSINESS THAT DESERVES SOME RECOGNITION, LET US KNOW SO WE CAN SHARE THEIR STORY TO INSPIRE OTHERS.

This month we've named a few of these heroes and legends in our publisher's opinion but we know there's plenty more out there. They may need some convincing so take them out for a couple of beers first! With the weather finally warming up and some decent rain at last, we are bringing you some tips to make sure the grass is greener at your place thanks to Singleton Outdoors. And what are you going to need to take care of that lawn? A bloody good mower so Singleton Outdoors are also giving one away this month to a lucky reader!



On our travel page we share with you some of our top watering holes to head to with the family. What better way to start off the summer than a swim in one of these great spots.

SO, THROW ON THE BUDGIE SMUGGLERS, SLIP ON SOME THONGS, GRAB THE ESKY, AND GO HAVE SOME FUN!

@THE COALFACE

Publisher
Shane Davey
shane@thecoalface.net.au
0408 759 088

Editor
Rebecca Connolly
rebecca@thecoalface.net.au
0408 769 699

General Manager
Steven Reynolds
steve@thecoalface.net.au
0431 734 443

Design
Catch Creative

Advertising Enquiries
Shane: 0408 759 088
Steve: 0431 734 443

@ The Coalface
14B/169 John Street
Singleton NSW 2330
www.thecoalface.net.au

MINING PRIDE

ONE OF THE GREATEST THINGS ABOUT THE HUNTER REGION IS THE REAL SENSE OF COMMUNITY THAT COMES FROM HAVING SO MANY MINERS AND THEIR FAMILIES LIVING IN OUR MINING COMMUNITIES. IT CREATES A STRONG SENSE OF COMMON IDENTITY AND COMMUNITY PRIDE.

This is often seen when our local mining communities come together to support a worthwhile cause. Like when over 350 miners recently hit the football field in a community rugby league knockout competition to raise money for our friends at the Westpac Rescue Helicopter Service.

The NSW Minerals Council was proud to support the Hunter Valley Mining Charity Rugby League Knockout Competition in Singleton, which featured men's and women's teams from mining operations in the Hunter and Gunnedah regions. A huge congratulations must go to the 2018 competition champions the Bengalla Badgers and the Hunter Hawkettes, worthy winners on a day of great achievement on and off the field.

THIS EVENT HAS NOW BEEN HELD FOR FOUR YEARS, RAISING OVER \$200,000 TO DATE FOR THE WESTPAC RESCUE HELICOPTER SERVICE. THE SERVICE HAS BEEN HELPING OUR REGION FOR 43 YEARS, COMPLETING AROUND 2,000 LIFESAVING MISSIONS EACH YEAR FROM THREE BASES LOCATED ACROSS NORTHERN NSW.

No one has ever had to pay to be rescued by the Westpac Rescue Helicopter Service, and the NSW Minerals Council will continue to support the critical work they do for anyone who needs rescuing in an emergency. We should be proud that the mining industry has been one of the biggest financial supporters of the Service for years, through contributions from companies and the mining workforce.



Stephen Galilee
CEO, NSW Minerals Council

Wouldn't it be great to see other so-called 'community' groups that make bold statements about 'standing up for local communities' like Lock the Gate and Frontline Action on Coal strap on their footy boots for a local charity like the Westpac Rescue Helicopter Service, or even make a donation, instead of spending all their time campaigning against the jobs of 20,000 mine workers and their families?

Stephen Galilee
CEO, NSW Minerals Council

MORGAN ENGINEERING

www.morganengineering.com.au

> **EXPERIENCE** > **QUALITY** > **RELIABILITY**

P: 02 6572 2032 F: 02 6572 2320 E: administration@morganengineering.com.au

■ On-Site Mobile Line Boring & Field Services ■ Mobile Milling ■ Liquid Nitrogen Service & Supplies ■ Weld Reclamation
■ CNC Machining ■ Medium Fabrication ■ Caterpillar Service Exchange Components

THE HON. DON HARWIN,
MINISTER FOR RESOURCES



SWEET!

WIN!

THANKS TO CHEF NICK AT CAFÉ LA LUNA, WE ARE GIVING AWAY A SCRUMPTIOUS CAKE OF YOUR CHOICE.

Choose any cake from their delectable range, including Malteser, Strawberries & Cream, Chocolate Mud or more. Share with the guys in the crib room or keep it all for yourself!

FOR YOUR CHANCE TO WIN, SIMPLY SMS: CAFÉ LA LUNA, YOUR NAME AND YOUR EMAIL ADDRESS TO 0438 474 290.

Limit of one entry per person. LTPM/17/02507

**CAFÉ LA LUNA | PH 02 6543 3594
SHOP 5, 168 BRIDGE STREET, MUSWELLBROOK**

BY SUBMITTING AN ENTRY, YOU CONSENT TO THE USE OF YOUR CONTACT DETAILS FOR PROMOTIONAL AND MARKETING PURPOSES.



MIGHTY MINING

AS HOME TO OUR NATION'S SINGLE LARGEST REGIONAL ECONOMY AND THE WORLD'S LARGEST EXPORT FACILITY FOR COAL - THE PROPERTY OF OUR STATE AND OUR NATION RELIES ON A STRONG MINING SECTOR AND A STRONG HUNTER REGION.

Recently, the demand for NSW thermal coal in NSW has been especially positive with thermal coal consumption in emerging economies such as Southeast Asia and India projected to more than double by 2040. This forecast is

underpinned by both independent and expert industry analysis which shows Asian thermal coal demand rising by over 400 million tonnes between 2017 and 2030.

WITH SUCH A STRONG OUTLOOK FOR THERMAL COAL IN OVERSEAS

MARKETS, WE ARE NOW SEEING NEW AND EXCITING OPPORTUNITIES DEVELOPING FOR OUR INDUSTRY AND FOR THE HUNTER HERE IN NSW.

Our mining industry is no doubt a resilient one - and nowhere is this more apparent than in our State's engine room of the Hunter Valley. When it comes to energy, we want the best deal for NSW and we want affordable power for the state's households and businesses.

In the lead up to summer, our growing community needs energy that they can rely on. And we plan

to deliver, actively ensuring we have the infrastructure and resources in place to meet the growing demand during the oncoming summer season.

Coal accounts for approximately 80 per cent of electricity generation state-wide, contributes over \$22 billion to NSW exports and \$1.8 billion in royalties each year which are used to fund our growing community's roads, hospitals, and schools - the message is clear. Mining in the Hunter is here to stay.

**The Hon. Don Harwin,
Minister for Resources**

APLUS

**CONTRACTING
& POLY WELDING**

www.apluscontracting.com.au

EXPERTS IN POLY WELDING

CIVIL EARTHMOVING, TRAFFIC MANAGEMENT AND SPECIALISED SERVICES

PH: 4938 3425 ON CALL 24 HOURS / 7 DAYS

- Poly Welding Equipment to 800mm
- Longreach excavator equipped with GPS
- Specialised Silt Fencing Installation Machine
- Civil Works including Concreting
- Grounds Maintenance Fleet
- Skid Steers, Backhoes, Excavators, Watercarts, and Graders all with attachments
- Traffic Management Services



We support...



REHABILITATING WORKERS & LAND

A FEW ISSUES AGO WE SPOKE OF THE FANTASTIC WORK THAT BLACKROCK INDUSTRIES WAS UNDERTAKING IN TRANSITIONING PEOPLE THAT HAVE BEEN INCARCERATED BACK INTO THE WORKFORCE. WELL NOW THEY ARE MAKING STRONG INROADS IN LAND REHABILITATION.

“Being an indigenous company here in the Hunter Valley we want to provide an opportunity to assist in rejuvenating the mine affected land back into the way our fore ancestors use to live upon,” says Steve Fordham, Director of Blackrock Industries.

Steve who with his experience, dedication and cultural background, has some very futuristic views for implementing his cultural heritage to achieve best results in land rehabilitation.

“WE WANT TO START BRINGING IN A LOT MORE OF DIFFERENT PLANTS, EVERYTHING FROM YOUR NATURAL BUSH TUCKERS TO YOUR NATIVES AND TRY AND INCREASE THAT OUTCOME INSTEAD OF JUST QUICK GROWING STUFF, SAYS STEVE.

“We want to expand into more pieces so as we can start to encourage more native wildlife back. We

have fantastic relationships with the mines, so they are prepared to listen to us. We were one of the first companies to kick off with MACH Energy Mount Pleasant which gave us a great platform to work from. It has enabled us to put best practice alongside cultural which I feel is very important when returning the mine affected land back to our community.”

Steve’s company has taken that relationship with MACH Energy and the opportunity it’s enabled to expand his business quite well and they are now undertaking land rehabilitation across several sites.

“We’re hoping to increase that across the Valley and there is a lot of dialogue happening behind the scenes to ensure that our history and capability, can work in with our experience and achieve some great results across the sector.”

GEARED UP FOR FUN!

BONUS BACKPACK AND CAP

plus **GEARWRENCH** TOOLSET with every NEW Kawasaki Fun Bike!

OVER \$300* VALUE

1.99%#

KAWASAKI KAWASAKI KAWASAKI KAWASAKI KAWASAKI KAWASAKI

Kawasaki Insurances Kawasaki Motors Finance Kawasaki GENUINE ACCESSORIES

huntervalleymotorsports.com.au

HUNTER VALLEY MOTORSPOITS **KTM** **Kawasaki**
www.huntervalleymotorsports.com.au

PH: 02 4932 6800
387 NEW ENGLAND HWY RUTHERFORD NSW 2320

*TERMS & CONDITIONS: The Kawasaki "Geared up for FUN" promotion applies to KX110, KX110L, KX140, KX140L, KFX50 and KFX90 models. Available from participating Kawasaki dealerships only. The "Geared up for FUN" pack has a retail value of over \$300 incl. freight (Tool Set \$269RRP, Backpack \$40RRP, Cap \$25RRP + freight). The Fun bike must be collected from the dealership prior to the end of the promotion. Items will be sent to the dealership within 28 days of the dealership submitting the claim. Promotion commences 1st November 2018. Check www.kawasaki.com.au for the end date. Limited time only. Limited number of "Geared up for FUN" sets available.

Terms and conditions apply. Finance for credit approved purchasers only. The comparison rate of 2.63% is based on a secured loan of \$30,000 for a term of 5 years at the annual percentage rate of 1.99%. The amount of credit provided to you and the term of the loan may be different to this. WARNING: The comparison rate only applies to the example given and may not include all fees and charges. Different terms, fees or other loan amounts might result in a different comparison rate. Finance is provided by KMAF Pty Ltd (a Kawasaki Motors Finance ABN 24 143 970 064 Australian Credit Licence No. 361531).

‘AVE A LAUGH WITH

PH 6571 1589
SingletonOutdoors
sales • service • spares

NOW HIRING TORO MOWERS AND HAND HELD EQUIPMENT

A man walking along a beach in Victoria was deep in prayer. All of a sudden, he said out loud, “Lord, grant me one wish.”

Suddenly the sky clouded above his head and in a booming voice, the Lord said, “Because you have tried to be faithful to me in all ways, I will grant you one wish.”

The man said, “Build a bridge to Tasmania, so I can drive over anytime I want to.”

The Lord said, “Your request is very materialistic. Think of the logistics of that kind of undertaking. The supports required to reach the bottom of the Bass Strait! The concrete and steel it would take!

I can do it, but is hard for me to justify your desire for worldly things. Take a little more time and think of another wish. A wish you think would honor and glorify me.”

The man thought about it for a long time. Finally, he said, “Lord, I wish that I could understand women. I want to know how they feel inside, what they are thinking when they give me the silent treatment, why they cry, what they mean when they say ‘nothing,’ and how I can make a woman truly happy.”

After a few minutes, God said, “You want two lanes or four on that bridge?

DOUBLE THREAT

DANIEL BEAVAN IS ONLY MONTHS AWAY FROM COMPLETING NOT ONE BUT TWO TRADE QUALIFICATIONS AND WAS A FINALIST FOR APPRENTICE OF THE YEAR NOT ONCE BUT TWICE!

HVTC Hunter's Daniel Beavan was a finalist at both the 2018 NSW & ACT Group Training Awards and the 2018 Hunter Manufacturing Awards and it's easy to see why.

A qualified fitter machinist after finishing a 4-year apprenticeship,



Daniel took on another huge commitment and applied for an electrical apprenticeship with HVTC.

"When I finished up my fitter apprenticeship it was hard to find work because of the downturn. I was only 21 so I decided getting upskilled would be a smart move and I thought that the two apprenticeships would complement each other," Daniel said.

HVTC Regional Coordinator Karen Eveleigh said Daniel will soon possess a highly sought after dual trade qualification.

"A DUAL TRADE IS A FANTASTIC ACHIEVEMENT – ONE THAT INVOLVES A LOT OF PATIENCE AND PERSEVERANCE. IT TAKES A LOT OF PASSION AND MOTIVATION TO COMPLETE ONE APPRENTICESHIP, LET ALONE TWO. DANIEL SHOULD BE INCREDIBLY PROUD OF HIMSELF," SHE SAID.

Initially hosted to Donaldson Coal's Abel mine site, Daniel applied for an apprenticeship at Origin Energy's Eraring

COOL CRIB

WIN!

YOU ARE GUARANTEED TO ADD A LITTLE SWAG TO YOUR SHIFT WITH OUR INSULATED PVC CRIB BAG.

Made by Rugged Xtremes and in classic Coalface yellow, we reckon our crib bag will be as sought after as a Louis Vuitton.

We've got two bags to give away this month so for your chance to win, simply SMS: WHATS IN THE BAG and your email address to 0438 474 290.

Limit of one entry per person.
LTPM/17/02507

BY SUBMITTING AN ENTRY, YOU CONSENT TO THE USE OF YOUR CONTACT DETAILS FOR PROMOTIONAL AND MARKETING PURPOSES.



Power Station when the mine was placed into care and maintenance. Origin Energy Leading Hand and Apprentice Mentor, Todd Horvat, said the additional trade qualification gave Daniel a step up over the other recruits.

"From day one you could tell Daniel was really switched on. Having already completed an apprenticeship he knew what to expect and the way he took up the electrical trade spoke volumes of his passion for the work. Some apprentices stand in the shadows and wait to be told what to do, whereas Daniel is more of a leader." Todd said.

IT'S THIS DEDICATION THAT LED DANIEL TO BE NOMINATED TWICE AND TO RECEIVING A HIGHLY COMMENDED AWARD AT

THE HUNTER MANUFACTURING AWARDS. AND IT'S NOT THE FIRST TIME HE'S BEEN RECOGNISED FOR HIS HARD WORK. DANIEL WAS ALSO NAMED SCHOOL-BASED TRAINEE OF THE YEAR WHEN COMPLETING HIS MECHANICAL TRADE.

"It's always an honour to be nominated for an award as it reflects how much effort I've put in both at work and throughout my training," Daniel said.

We asked Daniel the question on everyone's mind. Fitter or leco? Which is better? Diplomat that he is, he wouldn't choose one over the other, saying that both have their ups and downs and that having the knowledge and skills from both often makes his job easier.

Great work Daniel!

WE'RE OTR. WHERE EXPERIENCE COUNTS.



32 YEARS IN OTR TYRES & WHEELS

visit tyredoctor.com.au or call **1800 897 336**

Westpac Rescue Helicopter Service



TYRE DOCTOR

IN THE NEWS...

BYLONG BODING

The fate of Bylong mine hangs in the balance. Owned by South Korea's Korea Electric Power Corporation (KEPCO), the proposed Bylong coal mine failed to receive approval last year due to environmental and social impact concerns.

KEPCO resubmitted revised plans in July this year to the Department of Planning and Environment who have now completed their assessment of the proposal and referred it to the Independent Planning Commission for a decision.

If approved the mine will have a proposed mine life of 25 years for delivery of 119.8Mt of ROM coal over 23 operational years with 450 employees during operations.

BOOM AND DOOM

Workers at Boom Logistics went on strike last month to highlight their industrial campaign. Construction Forestry Maritime Mining and Energy Union Construction division, State Organiser Mark Cross said the workers had decided to strike because they had run out patience with the company over pay and work conditions. "We have been in negotiations with Boom at the Fair Work Commission for 10 months trying to get the company top agree to paying their workers industry comparable rate," he said.

In response to the strike BOOM went to the Fair Work Commission and secured interim orders stopping the action and workers are now back on the job. The union had said that workers will resume strike action as soon.

NO ACCIDENT

The Fair Work Commission has ruled to reduce injured coal miner's accident pay entitlements as contained in the Black Coal Industry Award 2010.

Accident Pay is an industrial entitlement available to injured workers in the black coal industry and is above and beyond an injured workers standard compensation entitlement. Prior to the decision Accident Pay was previously for 78 weeks but has now been reduced to 52 weeks.

MINING MATTERS

Barnaby Joyce and others from the House of Representatives Standing Committee on Industry, Innovation, Science and Resources recently held a hearing in Singleton to discuss the coal mining industry and among other things, the 9000 workers who drive-in daily.

Joyce chaired the meeting as part of an inquiry into mining support for businesses in regional economies.

Traffic chaos and attracting people to live locally instead of driving in were some of the very hot topics along with better distribution of Resources for Regions funding.

It was asked, "Given the wealth from coal royalties produced in this district we have to ask the question what do we get from that money."

Presentations from Council and Glencore gave further insight into some of the adverse issues along with the many positive contributions that come with mining.

Joyce expressed strong support for the industry, "It is bleeding obvious that power is driven by coal across the world."

BIS BUYOUT

Bis is consolidating its presence in the underground coal sector with the acquisition of mining services group, UGM.

Bis chief executive officer Brad Rogers said the deal delivered ready-made expansion of the company's existing underground business, which already offered the biggest underground hire fleet in Australia.

BILLION DOLLAR DEAL

Thiess has signed a \$1.2 billion deal at BHP's Mt Arthur Coal operation in a five-year contact. Under the new agreement, Thiess will perform mine design, planning and scheduling services, drill and blast operations, overburden removal and coal mining.

BHP was granted approval from the former NSW Planning Assessment Commission in 2014 to extend the life of the Mt Arthur mine until 2026, allowing the extraction of an additional 128 million tonnes of coal from the site.

The contract will enable work to intensify at the site's Ayredale and Roxburgh pits in the southern portion of the mining lease.

BHP Mt Arthur Coal general manager David Boshoff said it would allow coal to be extracted from a challenging zone and to mine in areas they previously have not been able to.

Work is anticipated to start in early 2019 and is expected to create up to 300 permanent, locally based jobs. This is the third successive contract that Thiess has secured with BHP at Mt Arthur Coal.



MOWER MADNESS!

THANKS TO SINGLETON OUTDOORS WE ARE GIVING AWAY A ROVER MACQUARIE LAWN MOWER VALUED AT \$529.

Featuring a 173cc Rover OHV engine, 46cm steel deck, mulch plug, 4 swing back blades and catcher it will making mowing a dream this summer.

FOR YOUR CHANCE TO WIN, SIMPLY SMS: SINGLETON OUTDOORS, YOUR NAME AND YOUR EMAIL ADDRESS TO 0438 474 290.

Limit of one entry per person. LTPM/17/02507

BY SUBMITTING AN ENTRY, YOU CONSENT TO THE USE OF YOUR CONTACT DETAILS FOR PROMOTIONAL AND MARKETING PURPOSES.

WIN!

Ready
For Rent

EVAPORATORS

Ready
For Rent

PUMP, GENERATOR & COMPRESSOR SOLUTIONS

4 Balbu Blose, Beresfield NSW 1800 737 687 www.nationalpump.com.au

NPE
NATIONAL PUMP & ENERGY

NEWCASTLE
53 Rural Drive
Sandgate, 2304
Ph 02 4967 4622

Hunter Liftrucks

CENTRAL COAST
6 Yandina Rd
West Gosford, 2250
Ph 02 4322 6220

YOUR FORKLIFT SPECIALIST

LOCALLY OWNED AND OPERATED FOR 35 YEARS

NEW AND USED SALES • HIRE • PARTS • SERVICE



www.hunterlift.com.au



MANUFACTURER OF MATERIAL HANDLING EQUIPMENT FOR OVER 140 YEARS

OPINION



SECURING OUR FUTURE

THE CURRENT AND ONGOING DEBATE ON ENERGY IS GOOD TO SEE. THE FACT IS, ENERGY COSTS RELATE DIRECTLY TO THE COST OF LIVING FOR RURAL AND REGIONAL FAMILIES AND THE COST OF DOING BUSINESS. SMALL, MEDIUM OR LARGE, THOSE SAME BUSINESSES PROVIDE JOBS, THEREFORE INCOME TO PAY FOR OUR CHOSEN LIFESTYLES.

Many people have views that are polarising in the energy debate. That is, coal vs renewables rather than taking what I would consider is a more productive, pragmatic approach to ensuring

energy generation is as cheap as possible and practical in its delivery for families and businesses. Renewable energy sources provide practical and relatively cheap energy on a domestic or small scale

and can work very well in that scenario.

COAL FIRED POWER STATIONS PROVIDE THE BASE LOAD POWER THAT IS REQUIRED FOR THE WIDER COMMUNITY ON A RELIABLE AND RELATIVELY CHEAP BASIS.

We need baseload power to run the electric trains, keep the street lights going, the hospitals, the schools and all the public services we generally ignore until we need them. Those large-scale energy users, that are not specific to the public services alone, require secure and cheap energy or they will simply not operate. Renewable energy sources require huge taxpayer subsidies to make them competitive with coal. In 2015/16 around \$2.9billion of taxpayers’ funds were given to the renewable energy sector and this is ongoing each year.

At the same time, governments and the private sector are either closing or planning to close coal fired power stations which, to be fair, are at or reaching their practical life and really need too much money spent on them to keep them going, which

will have a direct impact on electricity costs for families, businesses and primary producers.

WE HAVE AN ALTERNATIVE THAT CAN PROVIDE SECURE, CHEAP ENERGY FOR DECADES TO COME, THAT IS A HIGH EFFICIENCY LOW EMISSIONS (HELE) COAL FIRED POWER STATION.

For what is currently the annual renewable energy sector subsidy cost, (\$2.9b), we could build one HELE coal fired power station that would have a life of 50 years or more and secure cheap, reliable energy, allowing us all to put the kettle on, make the toast, keep the lights on, keep the air conditioners going, without breaking the family or business budget.

I can hear some now saying ‘what about reducing emissions and climate change?’, well a HELE coal fired power station reduces emissions by around 25-30% compared to current older generators and that reduction in emissions meets all climate change emission reduction targets, signed up to by Australia.

THERE IS NO REASON WHY AUSTRALIA CANNOT MEET IS CLIMATE CHANGE

TARGETS AND STILL BUILD NEW HELE COAL FIRED POWER STATIONS.

Also, if you think that just building wind turbines and solar panels will stop coal from being mined, think again. The amount of coal required to build one wind turbine is huge. I’ve seen the amounts range from 80 tonnes to 200 tonnes of coal per wind turbine. Regards of what the amount is, a totally renewable energy generation sector does not stop mining at all and they (wind turbines and solar panels) will be required to be replaced at least once during the same life cycle of a HELE coal fired power station.

It’s time the energy debate became less ideological and more pragmatic and that we all remember this; in the Upper Hunter we have the skills, the resources, the infrastructure and the need for building a HELE coal fired power station that will replace lost capacity with the closure of Liddell and secure cheap, reliable energy for many decades to come. This can be done with just one year’s worth of renewable energy rebates.

Michael Johnsen, MP, Member for Upper Hunter

MY18 MODEL
CLEARANCE



AMAROK CORE 4X4
6 SPEED MANUAL

FROM
\$39,990
DRIVEAWAY*

NEW AMAROK V6 CORE
TURBO DIESEL AUTO

FROM
\$50,990
DRIVEAWAY*

Your Volkswagen Partner

Hunter Volkswagen Commercial Centre
17 Mustang Drive, Rutherford MD17613
Tel. 02 4035 9300
www.huntervolkswagen.com.au

5
YEAR
UNLIMITED KM
WARRANTY*


Commercial
Vehicles

-Manufacturer's recommended campaign driveaway price for new MY18 Amarok Core 4x4 Dual Cab TD1400 6 Speed Manual in white. *Manufacturer's recommended campaign driveaway price for new MY18 Amarok V6 Core 4x4 Dual Cab TD1550 8 Speed Auto in white. -*Vehicles must be sold and delivered by 31/12/2018. Excludes Government, fleet and rental buyers. Available in conjunction with 5-year Unlimited Kilometer Warranty*. Options may be available for an additional cost. While stocks last. *Conditions and exclusions apply, see volkswagen.com.au/5yearwarranty. Your rights under this warranty are provided in addition to, and in some cases overlap with, consumer guarantees under Australian Consumer Law and do not limit or replace them. Volkswagen Group Australia reserves the right to extend, withdraw or change this offer.



ALL FOR FORUM

OPPORTUNITIES FOR LOCAL BUSINESSES WILL BE IN THE SPOTLIGHT WHEN COMMUNITY AND MINING COME TOGETHER AT THE UPPER HUNTER MINING DIALOGUE'S ANNUAL FORUM ON NOVEMBER 20.

The Dialogue brings together local miners, community representatives, business leaders, environmental groups, regulators and other local industries to identify, discuss and address challenges and impacts of mining in the Upper Hunter.

The annual forum allows stakeholders a formal opportunity to join together and help determine priorities for the Dialogue's future.

A key focus of this year's forum – to be held at the Muswellbrook Race Club – will be a morning networking and information exchange session where participants will be able to learn about the Dialogue's key themes, issues and projects.

Including:

Local procurement and purchasing

information from mining industry partners to help small and medium enterprises (SMEs) understand how to access opportunities in the local mining sector;

Key Dialogue environmental projects covering land management and rehabilitation, air quality emissions and health and water quality;

An update on the School Mine Tours Program and virtual reality technology demonstrations and;

Synoptic Plan update on long term post-mining land uses opportunities in the Upper Hunter.

The forum will be part of a live broadcast of Hunter Valley Today on Radio 2NM.

www.nswmining.com.au/dialogue/events

MOVERS & SHAKERS

CHANDLER MACLEOD HAS PUT A BIG VOTE OF CONFIDENCE FORWARD FOR THE LOCAL MINING INDUSTRY WITH THE OPENING OF A NEW STATE OF THE ART SINGLETON BASE.

After 10 years operating out of Singleton Plaza servicing their clients and candidates in the Valley, the move to larger, new premises at 162 John St, Singleton (next to Services NSW), demonstrates Chandler Macleod's commitment to the region in the years to come.

"WE ARE DELIGHTED TO ANNOUNCE THE OPENING OF OUR NEW HUNTER VALLEY OFFICE", SAID BRANCH MANAGER, JODIE WITNEY. THIS PURPOSE-BUILT FACILITY INCORPORATES A

MEDICAL CENTRE AND STATE OF THE ART TECHNOLOGY WHICH WILL ENSURE A SMOOTH PROCESS OF ENGAGEMENT AND A ONE STOP SHOP FOR BOTH CLIENTS AND CANDIDATES.

They told us they are looking forward to welcoming new and existing clients, candidates and employees along with suppliers, partners, colleagues and friends to see the new office and talk recruitment, staffing and workforce management.

Go Team!



RECRUITING NOW!

► Dump Truck Operators

**CHANDLER
MACLEOD**
UNLEASHING POTENTIAL

- Max Term Contracts
- Muswellbrook location
- Both skilled and semi skilled roles available
- \$46.89 per hour
- Lifestyle roster
- Plenty of OT available

02 6572 5900

 nswminingjobs.com.au

COMMUNITY CHAMPIONS MAKE THE HUNTER AN AMAZING PLACE

I LIKE TO THINK WE DO OUR FAIR SHARE FOR THE COMMUNITY SUPPORTING AS MUCH AS WE CAN HERE @ THE COALFACE. BUT THERE ARE MANY OUT THERE WHO PUT OUR EFFORTS TO SHAME AND MAKE US LOOK LIKE AMATEURS.

At this year’s Singleton Show and a few weeks later over a few beers at the recent Mining Rugby League Charity Day, I watched on as familiar faces stretched themselves to the absolute limit in the name of bringing our community together. They don’t do it for accolades or self interest, they do it because they love everything our

community represents.

I ASKED A FEW WELL-INFORMED COLLEAGUES FOR SUGGESTIONS ON WHO GOES ABOVE AND BEYOND TO ADD TO MY LIST AND THE NAMES FLOWED EASILY. BELOW IS JUST A SMALL PORTION OF SOME OF OUR COMMUNITY LEGENDS. I



PUBLISHERS OPINION

KNOW THERE ARE A LOT MORE WHO SHOULD BE CALLED OUT FOR THEIR GREATNESS. NONE OF THOSE MENTIONED WOULD WANT ME TO PRINT THEIR NAMES BUT I’LL RISK COPPING AN EARFUL.

On the subject of copping an earful, when I first met Danny and Jane Eather I promptly upset Jane and received a bloody big earful. She doesn’t suffer fools one bit. Thankfully we got to understand each other and over time I learnt my place and nowadays we are firm friends. Their main passion for the past 10 years has been the Westpac Rescue Helicopter Support Group but they help out wherever and whenever asked. Danny was even recognised as Singleton Citizen of the Year 2015. True champions this pair.

Mike Kelly, President of Muswellbrook Chamber of Commerce also comes to mind. He’s also put me in my place when necessary. Easily one of the best advocates for our area I have ever met and a bloke with a fierce passion for local business.

Then there’s Dianne Douglas who runs the PCYC in Muswellbrook and a big chunk of some of the most important initiatives in that part of The Valley. There are many reasons why we owe this woman so much.

Pauline Carrigan from ‘Where There’s a Will’ has shown everyone true class in the face of adversity and from personal tragedy she has built an education program making huge progress around mental health and wellness in schools.

Glen Parsons also deserves more than a mention too. Glen runs The Cancer

Council in these parts and to say he goes above and beyond in the line of duty is an understatement. He’s made it his life’s mission to make the lives of cancer patients easier and cancer prevention a way of life.

A very special mention must also go to Singleton’s Di Sneddon, a woman I have always been in awe of. She has been involved in absolutely everything and made so much happen I don’t even know where to start. A living legend in every sense of the word.

Then there’s Sue Milton of Aberdeen who organises everything for people, volunteers for everything in the community, and is truly one of the most compassionate and caring people in the area.

Rebecca March is another and her work putting together the Singleton Show along with other dedicated volunteers each year is testament to her determination and community spirit.

Last but not least on my incomplete list, goes to business leaders Malcom and Tracy Willis and Gus Mather of Pirtek Singleton and Muswellbrook who are local heroes of mine. From major donations to support virtually everything that is asked of them, to giving their time whenever asked, they lead by example and humility they are as good as it gets, and I doubt anyone would disagree.

Who do you think deserves a mention? I’d love to hear your thoughts and we’d love to regularly feature them in a new column we are looking to start called ‘Community Champions’.

PROSPECT

RECRUITMENT

Trusted and professional recruitment services to the mining, resources and energy sectors

• Process Outsourcing Solutions • Search & Selection • Assessment Centres

• Outplacement Services • HR Consulting • Psychometric Profiling & Assessment

To learn more please visit: www.prospectrecruitment.com.au

Brisbane | Maitland | Townsville | Email info@prospectrecruitment.com.au

TRADECORE

INDUSTRIES

MINING MAINTENANCE & LV FLEET MANAGEMENT

PH (02) 6572 4811 www.tradecore.net.au

SINGLETON 16 MAGPIE ST

MUSWELLBROOK 10B CARRAMERE RD

MAJOR CAPABILITY & EXPERIENCE DELIVERED WITH FAMILY VALUES

Tradecore are your one stop shop for complete maintenance services:

• Earthmoving Equipment repairs

• High Voltage and Auto electrical Services

• Light vehicle Workshops in Singleton and Muswellbrook to carry out: Repairs/Service, Fleet management and fitting out to mine specs

• Commercial 4x4 Light vehicle and Truck Hire

• Labour hire

• Asset management

• Fabrication and Welding Repairs

12 NOVEMBER - DECEMBER 2018 | @ THE COALFACE

AT TITAN WE DON'T COMPROMISE NOR SHOULD YOU

Whether we're supplying or servicing your tyres, wheels, tracks or axles you can rely on Titan for the most innovative and cost-effective solution for your business allowing you to fully concentrate on what you do best, moving, growing, and succeeding.



UNDERCARRIAGE

Titan Australia is the distributor and service support provider of ITM undercarriage products, a worldwide leader in the design and manufacture of components and complete undercarriage solutions.

ITM, a 100% owned subsidiary of Titan International, is a world leading specialist designer and manufacturer of undercarriage components, covering the entire range of modern crawler machine applications in the construction, mining, utility, forestry, road building and agricultural industries. Titan Australia provide OE & Aftermarket specialist sales & service support for ITM products across Australia.

ITM is the supplier of choice to many of the world's OEM's in the field of tracked machines including Atlas Copco, Bucyrus, Doosan, JCB, John Deere, Hitachi, Hyundai, Komatsu, Liebherr, Sandvik, Terex, Volvo and Wirtgen Group.

Our repair facilities located across Australia in Perth, WA; Emerald, QLD; and Muswellbrook, NSW, allow our customers easy access for repairs and maintenance. Each track shop features a range of specialised machinery designed to carry out a broad range of undercarriage services. This combined with the expertise of our service teams, ensures our customers undercarriage needs are met to the highest standards.



SERVICES & REPAIRS

UNDERCARRIAGE SERVICE AND REPAIRS

Titan provides complete inspection, repair and certification services for all customer undercarriage requirements from our workshops at the following locations...

- Perth - Western Australia
- Emerald - Queensland
- Muswellbrook - NSW

Other Services include, major track frame re-build, idler & roller exchange as well as C.T.S. Inspections.

WHEEL SERVICE AND REPAIRS

The wheel is the most integral part of a ground vehicle. Every aspect of design and development is unique for each application.

By working with our customers we continually improve current designs and research technology to develop more effective products.

Our in-house wheel and rim inspection, repair and certification services are performed by our fully qualified staff in accordance with AS:4457.1: 2007 and related standards in Western Australia (WA), Queensland (QLD), New South Wales (NSW) and Victoria (VIC).



WHEELS & TYRES

Titan Wheels Australia is the market leader in the design, development and manufacture of wheels to the 'off-highway' industry. Supplying the world's most respected original equipment manufacturers like Caterpillar, Volvo, Komatsu and Liebherr means that our product, service and delivery must consistently meet the high standards set by these companies.

In addition, Titan Australia designs, develops and manufactures wheels for the agricultural, construction and mining industries. From earthmoving equipment, trucks and tractors to forklift and industrial vehicles, no mobile tyre problem is too big or too challenging. We will get your vehicles on the move again fast, minimizing downtime and maximizing the return on your tyre investments. Titan offers a complete range of wheels, from 6" through to 63" in diameter, including fixed welded wheels, adjustable bolted tractor wheels, demountable (spider mount) rim options and clip-on dual applications.

Manufacturing capabilities are backed by the best wheel engineers, Customer Service Department and dedicated sales team all ensuring that components are manufactured to the highest standards and delivered on time. As a customer-focused and process-oriented company, no other wheel manufacturer can match our experience, capability, quality and design. Environmental accreditation along with attention to waste control is a reflection of our company values.

MOVEMBER MATTERS



SINCE IT STARTED IN 2003, MOVEMBER HAS BECOME A MEN’S HEALTH MOVEMENT WITH OVER 5 MILLION SUPPORTERS ACROSS THE WORLD RAISING AWARENESS AND FUNDS TO ENABLE MEN TO LIVE HAPPIER, HEALTHIER AND LONGER LIVES.

DAVE MCLEAN MOVEMBER MOTORCYCLE RIDE

FOR THE PAST DECADE, NEWCASTLE RESIDENT AND PROSTATE CANCER SURVIVOR DALE MCLEAN HAS BEEN ON A MISSION TO KICK START CONVERSATIONS ABOUT MEN’S HEALTH WITH HIS ANNUAL MOVEMBER MOTORCYCLE RIDE AROUND LAKE MACQUARIE.

Once a man of few words when it came to his health, Dale’s irregular GP visits and ‘I’ll be right’ attitude kept him worry-free and away from the doctor. At 49, Dale was urged to get the PSA test by his daughters, Jamie and Elisha. Being just shy of 50, he wasn’t sold that he needed the test, but went for the sake of his girls. Dale experienced his first ‘uh oh’ moment a few days later when his doctor asked to see him. For Dale, news of his diagnosis came in two parts; the good and the bad. **THE BAD NEWS WAS THAT DALE’S HIGH PSA LEVELS AND THE SUBSEQUENT TESTS REVEALED THAT HE HAD AGGRESSIVE PROSTATE CANCER. THE GOOD NEWS WAS THAT IT HAD BEEN CAUGHT JUST IN TIME.** After 10 hours on the operating table to remove his prostate, blood

tests and endless appointments, Dale was given the all clear and was officially in remission after three years. Dale hopes that his story inspires others to talk, get checked out and look after themselves. **“MY FAVOURITE THING ABOUT MOVEMBER IS THE COMRADERY AND FUN WE HAVE TRYING TO RAISE FUNDS AND AWARENESS FOR MEN’S HEALTH. MY GOAL FOR THE MOTORCYCLE RIDE IS TO ENCOURAGE MEN TO HAVE A CHAT AND GO SEE A DOCTOR,” HE SAID.** Unfortunately, men are less likely than women to use healthcare services, with an estimated 80% of men not going to see a physician until they are convinced by someone else to do so. Dale is determined to change this, by encouraging other men to engage

with their health, talk more openly and take action where necessary. Rachel Carr, Movember Foundation Australia Country Director says: “We are humbled by Dale’s continued support for the Movember Foundation. In Australia more than 3,400 men die from prostate cancer each year. That is unacceptable. Dale’s event raises much needed funds to help us stop men dying too young.”



Donate now at mobro.co/dalemclean



39-43 Thomas Mitchell Drive
Muswellbrook NSW 2333 Australia
+61 (2) 6540 9400
info@mrssg.net
mrssg.net

UNRIVALLED MINING SERVICE CAPACITY & SUPPORT



NOW RECRUITING!
Email your CV to recruitment@mrssg.net



WHAT WE DO
We provide a range of support services to enable mining companies to focus on maximizing production.

HOW WE DO IT
We listen and understand our customers needs, and deliver a service which exceeds expectations. We'll do what we say we'll do. We'll reduce downtime and extend the life of customer equipment. We only hire the best people to ensure a superior 24/7 available service. We'll ensure customer compliance is met and maintained.

WHY WE DO WHAT WE DO
We aim to enhance sustainability of mining in the Hunter Valley.

ONE STOP MAINTENANCE AND SUPPORT SERVICES FOR THE MINING INDUSTRY
MRS Services Group Production Support offers a comprehensive range of services which focuses on maximising production and minimising downtime for its customers to aid the overall efficiency of core activities, and therefore increasing production capacity. MRS Services Group Production Support provides a broad range of resources that directly support mining across every phase of the mining cycle.

- › Mine Rehabilitation
- › Mine Services
- › Wet and Dry Plant Hire
- › Industrial Services

- › Poly and Water Reticulation
- › Fabrication
- › Mechanical
- › Automotive

- › Lineboring
- › Electrical
- › Maintenance Support

SAFETY | CUSTOMER SERVICE | QUALITY | RESPECT | INTEGRITY & ACCOUNTABILITY

14 NOVEMBER - DECEMBER 2018 | @ THE COALFACE

Movember all started in Melbourne when a group of men having a few drinks at the local pub came up with the idea to grow moustaches for charity during the month of November. Since then it has fast grown into a globally recognised

campaign spreading to many countries around the world. November is now synonymous with Movember thanks to the many men who have grown a moustache for this great cause. But the Movember Foundation is more than just the

making of moustaches. Awareness and fundraising activities are run year-round by the foundation and their efforts have helped fund 1,200 innovative men's health projects across more than 20 countries focusing on prostate cancer,

testicular cancer and mental health. Here in the Hunter there are many different businesses, individuals and organisations who have generously donated, fundraised and supported the Movember Foundation.

WAVES OF WELLNESS (WOW) SAND N' SURF PROGRAM

THIS YEAR WAVES OF WELLNESS LAUNCHED THEIR NEWEST PROGRAM IN PARTNERSHIP WITH THE MOVEMBER FOUNDATION; WOW SAND N' SURF. IN THIS FREE SIX-WEEK PROGRAM MENTAL HEALTH PROFESSIONALS TEACH YOU TO SURF AS YOU MEET NEW MATES AND MAKE CONNECTIONS.

Waves of Wellness was founded by Joel Pilgrim because he saw a need to find an innovative way to address mental health. "Men generally don't talk openly about their mental health, so we needed a creative way to provide avenues for them to share what they are going through. It's all about starting a conversation on a real level. Spending time in the waves and on the sand with people who understand and can provide strategies and advice." Joel said.

Waves of Wellness is one of 13 projects to receive pilot funding as part of the Movember Social Innovators Challenge. The Challenge was initiated in 2015 when the Movember Foundation and beyondblue called for innovative, outside-the-box ideas for game-changing products or services which could increase the quantity and quality of men's relationships, and thereby improve their mental wellbeing. "PARTNERING WITH MOVEMBER HAS BEEN A FANTASTIC OPPORTUNITY

FOR US AND HAS HELPED US TO DELIVER A PROGRAM THAT IS MAKING A REAL DIFFERENCE. WITH THEIR SUPPORT WE CREATED THE SAND N' SURF PROGRAM TO FOCUS ON MAINTAINING POSITIVE MENTAL HEALTH AND WELLBEING, RATHER THAN WAITING UNTIL PEOPLE EXPERIENCE CHALLENGES." JOEL SAID.

210 people have already completed the program in its Sydney and Newcastle locations thanks to the 20 volunteer surf mentors and It will soon be expanding to Victoria and Queensland. The success of the program is no doubt due to its laid-back approach and its ability to deliver to all walks of life. To register for the Sand n' Surf program or to become a surf mentor go to www.wowsandsnurf.com



THE HAIRY FACTS

Suicide is the leading cause of death for Australian men aged 15-44 years and on average, nearly 6 men each day take their own life in Australia.

Prostate cancer is the most commonly diagnosed cancer in Australian men and more than 3,452 men with prostate cancer

will die in Australia in 2018.

1 in 2 Australian men will be diagnosed with cancer by the age of 85 and on average, Australian men die around four years earlier than women.

Stop men dying too young this Movember. Sign up or donate now at movember.com

Imperial
HOTEL

Singleton's

PLACE TO CELEBRATE!

MONDAY TO FRIDAY HAPPY HOUR
10AM-12PM & 4-6PM: \$4 SCHOONERS!

| | | | |
|------------|---------------------------|------|---|
| MON | \$9.90 Steaks | THUR | \$24 Ribs & Rump |
| TUES NIGHT | \$14 Snittys + Trivia | FRI | Meat raffles at 6.30pm \$5 drinks all night |
| WED NIGHT | Free raffles + \$10 Pizza | SAT | Live entertainment from 8.30pm |
| | | SUN | \$15 Roast and Kids Eat Free |

PH 6572 1290 183-185 John St Singleton

MAXIMUM TERM CONTRACT ROLES

YOU WILL RECEIVE:

- Excellent working conditions
- 4/5/5 rotating roster
- 6 weeks paid annual leave
- 105 hrs paid personal leave

PAY RATES:

\$46.89 + Super + LSL
\$51.52/Hr for Unrostered Overtime

WHO WE ARE LOOKING FOR:

Successful applicants will have:

- A minimum 12 consecutive months experience on a CAT 785, Komatsu 830E or equivalent
- A positive attitude and proactive safety focus
- Must be willing to relocate within 60 minutes of Muswellbrook

APPLICATION PROCESS:

Apply now: elise.b@stellarreruitment.com.au
Call us on 1300 STELLAR

STELLAR



THE GUNNEDAH SHOW COMMITTEE HELD THEIR INAUGURAL ENERGY, INNOVATION AND MINING AND EXPO THIS MONTH AND THEY DELIVERED BEYOND ALL EXPECTATIONS.



From the kids to the adults, there were smiles all around as people enjoyed looking behind the scenes of all facets of industry. From large shovel buckets and simulators, through to the latest in solar, there was plenty to see.

Senator Matt Canavan, Barnaby Joyce and Local MP Kevin Anderson were on hand to provide the community with the facts on industry and the region. The boys from MRS Services had some time with Senator Canavan who was very interactive with the growing crowd and gave two great speeches.

“It was great to be able to meet him and to actively participate in engagement around all things

industry.” Johnathon McTaggart from MRS services said. “He is very switched on and is so easy going and open to conversation. He was with us for a good 15mins, and given he is on the forefront of energy industry, it was really encouraging to see how proactive he has been around the energy sector, and reassuring that there are big things happening behind the scenes that are being pursued before it is too late.”

The most important thing to come out of eIMEx was a strong message. Coal, mining in general and other industries such as agriculture, are all equally important and vital pillars of not only NSW and Australia’s prosperity and future, but the world as well.



Open letter to NSW Northern District mine operators

IT’S TIME FOR PERMANENT JOBS

Casual labour hire has grown out of control. In recent years, mine operators have deliberately reduced the number of permanent jobs in NSW coal mines in favour of labour hire.

These ‘casual’ workers are required to make a full-time, permanent commitment, with rosters up to 12 months in advance. But they get less pay than permanents, no paid leave and no job security – often for years on end.

We have long maintained the ‘permanent casual’ work model in coal mining is a rort. Now the courts have agreed.

The decision in the WorkPac v Skene case brought by the CFMEU found that full-time mineworkers with advance rosters are not casual under the law, even if their employer calls them casual.

This is a big win for mineworkers and our local communities, who deserve secure jobs, training and career development opportunities.

Mining companies are on notice that we will vigorously pursue the entitlements affected workers have missed out on.

But they shouldn’t wait for legal claims. Mining companies can start doing the right thing straight away by employing local mineworkers in the permanent jobs they want and deserve.

Find out more:
me.cfmeu.org.au
p. 1300 712791
e. union@cfmeunsw.org.au



Authorised by Peter Jordan, President, CFMEU Mining & Energy Division, Northern Mining & NSW Energy District Branch, 67A Aberdare Road, Aberdare NSW

J&S ENGINEERING

**DELIVERING OPTIMUM
RELIABILITY & AVAILABILITY
FOR YOUR DOZER TRACK FRAMES.**



J&S REMANUFACTURED TRACK FRAMES

SPEND MORE TIME ON YOUR MACHINE AND LESS TIME IN TRANSIT.

20,000 PRODUCTION HOURS ARE

A FUNCTION OF J&S QUALITY AND EXCLUSIVE USE OF OEM COMPONENTS.

J&S ENGINEERING - PROVIDING

LOWEST TOTAL COST OF OWNERSHIP SOLUTIONS FOR MINERS.



PH 4932 7379

www.jsengineering.com.au



AUSTRALIAN OWNED AND OPERATED





PIRTEK

**WE'LL KEEP
YOU OPERATING**



HOSES & FITTINGS



FIRE SUPPRESSION



QUICK FILL



SAFETY



LUBRICATION



SPILL CONTROL

Contact:

Dubbo

Call 0417 844 578

Gunnedah

26 Barber St. Gunnedah
(02) 6742 4988

Lithgow

1 Ian Holt Dr. Lithgow
(02) 6355 7004

Maitland

129 Racecourse Rd. Rutherford
(02) 4932 1120

Mudgee

36 Sydney Rd. Mudgee
(02) 6372 3454

Muswellbrook

88 Maitland St.
(02) 6543 4255

Newcastle

20 Munibung Rd. Cardiff
(02) 4954 5933

Orange

97 Elsham Ave. Orange
(02) 6360 2944

Singleton

14 Maskey Rd. Mt Thorley
(02) 6574 2782

Tamworth

4/61 Barnes St. Tamworth
(02) 6762 0600



PIRTEK

134-222

24 HOURS - 7 DAYS
www.pirtek.com.au

LEARN FROM THE LAWMAN

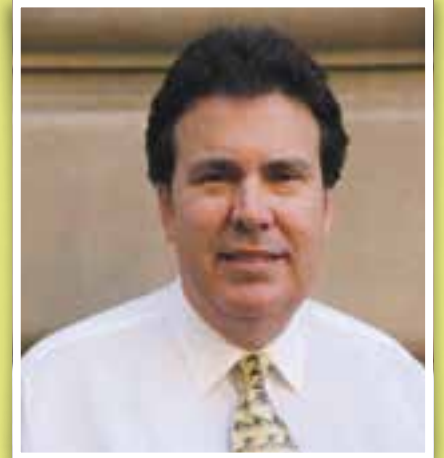
STUART BARNETT IS OUR MINING INDUSTRY'S LEADING PERSONAL INJURY LAWYER. THIS MONTH HE HAS SOME IMPORTANT ADVICE IN RELATION TO GETTING A "SECOND CHANCE" FROM A COURT.

Many of you will have seen in the media reports that a person appearing before the Court pleaded guilty and had "no conviction recorded" or was "placed on a good behavior bond with no conviction recorded". You may even know someone who has had that happen to them. You may have wondered what that is and how they can plead guilty but not be convicted.

THE LAWS THAT RELATE TO THE SENTENCING OF PERSONS BEFORE THE COURT FOR CRIMINAL MATTERS PROVIDE FOR A SITUATION WHERE THE COURT FEELS FOR SOME REASON THAT EVEN THOUGH THE PERSON IS GUILTY OF AN OFFENCE IT IS NOT APPROPRIATE TO RECORD A CONVICTION. SECTION 10 OF THE CRIMES (SENTENCING PROCEDURE) ACT 1999 ALLOWS A COURT TO SIMPLY DISMISS THE CHARGES, PLACE THE PERSON ON A GOOD BEHAVIOR BOND OR REQUIRE THEM TO PARTICIPATE IN AN INTERVENTION PROGRAM, ALL WITHOUT RECORDING A CONVICTION.

Where the Court dismisses the charges that is usually the end of the matter. If on the other hand the Court places the person on a good behavior bond or requires them to participate in an intervention program then the person enters into an agreement or "bond" to be of good behavior for a certain period or to attend on a course to assist with their rehabilitation. If you commit another offence whilst on the bond, not only can you be dealt with for the new offence, you may find yourself back before the Court on the original charges and a conviction being recorded.

THERE CAN BE MANY REASONS WHY A COURT DECIDES TO PROCEED THIS WAY. NORMALLY THERE ARE EXTENUATING CIRCUMSTANCES RELEVANT TO THE INDIVIDUAL BEFORE THE COURT. IT MAY ALSO BE THAT THE OFFENCE WAS SO TRIVIAL THAT THE COURT FELT THAT COMING TO COURT WAS PENALTY ENOUGH.



When determine whether a person deserves the benefit of not having a conviction recorded the Court will consider the persons character, age, health and mental condition. The trivial nature of the offence, the circumstances in which the offence was committed and any other extenuating circumstances relevant. Importantly the Court will also look at the persons' criminal record. There are many examples of circumstances where persons receive the benefit of the section, a person with 20 to 30 years of unblemished driving or a person who has contributed a lot to their community over a long period and has a clear criminal record come to mind.

THE USE OF THIS SECTION IS SOMETIMES REFERRED TO AS "YOUR LAST CHANCE" OR IT MIGHT BE SAID THAT "EVERYONE DESERVES ONE BREAK". REMEMBER, MORE LIKELY THAN NOT, YOU WILL ONLY EVER BE ABLE TO ASK THE COURT FOR THIS BENEFIT ONCE UNLESS THERE ARE SPECIAL CIRCUMSTANCES. THE "LAST CHANCE" HAS TO BE EARNED AND EVEN THOUGH THE CONVICTION IS NOT RECORDED THE FACT THAT YOU RECEIVED A SECTION 10 SENTENCE IS RECORDED.

This is general advice and because your individual circumstances will vary I recommend seeking out specific advice for your needs.

**Stuart Barnett
Slater & Gordon Lawyers**

**'AVE A
LAUGH WITH**

PH 6545 3033



NOW STOCKING HONDA MOTORCYCLES

An employee is getting to know her new co-workers when the topic of her last job comes up.

"Why did you leave that job?" asked one co-worker.

"It was something my boss said," the woman replied.

"Why? What did he say?" the co-worker asked.

"You're fired."



MINES TO THE RESCUE

PARALLEL ECONOMICS

OUR EMERGENCY SERVICES ARE WITHOUT DOUBT SOME OF THE BEST IN THE WORLD. THE POLICE, AMBULANCE, FIRE BRIGADE, RFS, SES AND OUR OWN MINES RESCUE SERVICE PERFORM SOME OF THE HARDEST JOBS OUT THERE UNDER THE MOST DANGEROUS AND STRESSFUL CONDITIONS.

Their safety and ours relies on the very best of training. Imagine if we built a training camp of 'Army base' sized proportions and capability to even better equip our emergency services on the front line on Hunter mine buffer land.

A permanent national emergency training home

designed to enhance every training environment and situation you could imagine and a heap you probably can't. From unique built and natural environment fire fighting to public disorder and riot training for the police the possibilities are endless. Mass casualty situations, terrorist, air, road

and rail disasters – It could be a one stop shop to prepare for the unexpected. All forms of ambulance including road, our rescue helicopters and even the flying doctors could come into use at the facility.

WITH PLENTY OF SPACE, REAL SCALE DISASTER SITUATIONS COULD BE RECREATED, AND

RESPONSE TECHNIQUES HONED TO PERFECTION.

A centralised campus housing administration, classroom-based learning along with on site accommodation and all the other facilities could all be developed and used as needed to expand training capabilities across all emergency services.

Having the ability for all services to train individually or come together in joint training exercises would hold high value for all involved. Another use could be for the physical conditioning and training of personnel so that they are at peak fitness when called into action.

THINK OF THE WHOLE THING LIKE A NATIONAL UNIVERSITY AND TRAINING FACILITY FOR OUR EMERGENCY SERVICES. IN FACT, THE WHOLE PLACE COULD ALSO EVEN PROVIDE BASIC TRAINING FOR PEOPLE LOOKING TO EMBARK ON A CAREER IN EMERGENCY SERVICES AND USE IT AS A PRE-TRAINING VENUE BEFORE ENTERING THEIR CHOSEN SERVICE.

There are so many potential positives in a development like this and the economic benefits for surrounding support and supply industries are endless.

Ladies and gentlemen...this is not a drill.

THE MEGA MONTHLY MEAT RAFFLE WORTH \$150 COMPLIMENTS OF ROBERT'S MEATS



The Hunters best butcher of hand-picked meaty goodness!

FOR YOUR CHANCE TO WIN, SIMPLY SMS: ROBERTS MEATS, YOUR NAME AND YOUR EMAIL ADDRESS TO 0438 474 290.

Limit of one entry per person. LTPM/17/02507

BY SUBMITTING AN ENTRY, YOU CONSENT TO THE USE OF YOUR CONTACT DETAILS FOR PROMOTIONAL AND MARKETING PURPOSES.

WIN!

ASG
EQUIPMENT

THE TRUSTED ALTERNATIVE
IN EARTHMOVING RENTAL



1300 844 304
WWW.ASGEQUIPMENT.COM.AU

AUTECH 2-WAY GRINDING VEHICLE

TYPE AT VM 8000-12



FEATURES

- Equipped with 12 grinding shafts for the short pitched corrugations, re-profiling
- Rear mounted vertical disk for grinding lip buildup in the vicinity of the guide rail
- Grinding depth of 0.2mm with an average of about 250m of rail per hour on rail head
- The grinding process control system is an on board laser based measuring device
- Grinder requires 6m track entry, set up time 3 minutes on/off track
- Ideal grinder for turnouts, level crossings, track upgrades
- Supported by the Autech Rail Monitor non contact laser measuring device, that provides data on switch wear, turnouts, mainline wear and profiles
- The Autech VM800 is gauge convertible to all Australian Rail Gauges
- The grinder is suitable for processing track in tunnels, CBD areas with low DbA noise levels



AUTECH RAIL AUSTRALIA PTY LTD

52 Baretta Road, Ravenhall Vic 3023

Contact: Mobile **0413 549 032**

Email: **b.crawford@autechrail.com.au**

www.autech.ch



MINE SUPER TONY BUTTERFIELD

SUPPLIER INSIDER

Who are you and what do you do?

My name is Tony Butterfield, and I work as Employer Engagement Manager at Mine Super. Mine Super is an industry super fund for mining and related industries, and we've been supporting members and their families for over 75 years. As a public offer fund, my primary role is to manage and foster supportive relationships with our employers while building and developing relationships with new employers. One of the aspects I focus on is improving employers' awareness of the importance of financial literacy amongst the workforce and offering opportunities onsite to better educate their staff around the importance of retirement planning.

Where do you come from?

I've had many years as a professional sportsman before establishing the NRL players association upon retirement. Living in the Hunter for more than 30 years I've also been active in private, non-profit and community sectors, with the past 9 years at Mine Super.

What's the best thing about your business?

Helping educate employers that improving the financial wellbeing of their workforce is indeed worthy of their time and support. In the same way employers assist their people around physical and mental challenges, many are now seeing the benefits of a third element, financial education, as a means of improving productivity, safety and retention amongst staff.

What's the big news in your part of the mining industry right now?

With increased regulation there is a bigger focus on funds being compliant and a push to improve member engagement practises and governance. We agree with these changes and believe it will ensure there are better member outcomes.

What's the biggest opportunity for your business right now?

I believe there's real opportunities for closer engagement with our members given the challenging economic environment. We understand mining and the unique needs of our members and aim to empower them with the information they need to make informed decisions. We want to talk to all of them to make sure they are organised, on track, and confident for the future. We want to help members understand the importance of super and show them how to prepare for their future.

What are the biggest challenges for your business?

Navigating the challenges and uncertainty created by ongoing regulatory reform and the shifting super landscape are the biggest challenges at the moment. Constant change undermines consumer confidence in the super system, so we need to remind our members of the importance of financial planning so they can achieve their financial goals.

How long in business in the Valley?

The Fund was established in 1941.

What's the best thing about your job?

I think creating hope and confidence. Seeing members and their families take control of their financial future is a powerful motivator for me.

The worst thing?

Seeing missed opportunities that could have been fixed if members had the right financial advice to help guide decisions to maximise their financial wellbeing.

Best thing about your company?

The people. Most have history and family in the mining space, so are down to earth and genuinely care about improving the prospects of our members.

@ THE COALFACE | NOVEMBER - DECEMBER 2018 21

A CUT ABOVE FOR CHARITY



ON NOVEMBER 24 THE SINGLETON SHOWGROUND WILL ROAR INTO LIFE FOR THE SINGLETON CHARITY POST CUT WITH PROCEEDS GOING TO SINGLETON HOSPITAL.

The annual post cut is a long held Singleton tradition with plenty of nail biting action from the regions best post cutters. This is the first year the event will be held at the showgrounds, but as usual the day will offer plenty of action and family fun.

Organiser and Rix's Creek operator Bluey Moore said of the event, "It's going to be a ripper of a day excuse the pun. There's always plenty of action and noise to really get the crowd going. We design the day as a fantastic spectacle and family event so bring the kids, your mates and enjoy the action, a beer at the bar, a sausage sandwich and have a bet in the Calcutta."

On the day there will be huge raffles with prizes totaling around \$7000 with the major prize being a \$2000 Husqvarna courtesy of D&L Chainsaws.



FUN IN THE SUN

HUNTER VALLEY SCHOOL CHILDREN ARE BECOMING MORE SUN-SMART THANKS TO BHP'S BENEFITTING MY COMMUNITY PROGRAM.

14 local schools including those in Singleton, Muswellbrook, Scone and Denman will be home to new sunscreen stands after the Cancer Council NSW was successful in attracting \$7,560 through the program.


Mt Arthur Coal General Manager David Boshoff was excited to play a role in protecting local kids when they're out in the sun.

"THE INCIDENCE OF MELANOMA IS MORE THAN 20% ABOVE THE STATE AVERAGE IN THE LOCAL AREA. ONE OF THE BEST WAYS TO TACKLE THAT PROBLEM IS TO START WITH THE NEXT GENERATION BY REMINDING THEM ABOUT THE IMPORTANCE OF RE-APPLYING SUNSCREEN THROUGHOUT THE DAY."

"BHP are committed to safety both on and off the mine site. People are our best resource – whether it's the children in our schools, or at our operation. We need to invest in them, support their development and put them in the best possible situation to succeed," David added.

Community Programs Coordinator Glen Parsons from the Cancer Council NSW said the organisation is taking the opportunity during the distribution to local schools to give talks and information about SunSmart habits, like Slip, Slop, Slap, Seek and Slide.

"BHP are community supporters of Cancer Council's Sun Sign schools project. As an organisation that is over 95% community funded, we are very grateful to community supporters like BHP help us deliver our vital prevention services, and in this case, the education of children being sun smart is paramount." Glen said.



L-R GLEN KITE, GLEN PARSONS, MACKENZIE POLLARD, MITCHELL LACKENBY, KAT STOJAKOVIC



The Clubby

CLUB HOUSE
HOTEL

Singleton's home of sport, beer, betting,
tucker, drive through and good times!



Tell 'em
SOL
sent ya!

If you can't find us...
try harder.

LOCAL LIQUOR
THERE'S ONE NEAR YOU



CHRIS QUINN,
BLOOMFIELD GROUP
ENVIRONMENTAL ADVISOR
WITH SINGLETON HIGH STUDENTS.

COOL SCHOOL

SINGLETON HIGH SCHOOL STUDENTS GOT UP CLOSE AND PERSONAL WITH THE RIX'S CREEK MINE LAST MONTH.

The 22 students were the first instalment of Singleton High Year 9 students scheduled to visit the Bloomfield Group mine during October and November as part of the 2018 Upper Hunter School Mine Tours Program.

The students were expertly guided around the entire mine site by Bloomfield Environment Manager Chris Knight and Environmental Advisor Chris Quinn.

THE TOUR TOOK IN ALL

ASPECTS OF THE MINING PROCESS, INCLUDING THE MACHINE WORKSHOP, COAL LOADING AND WASHING FACILITY, REHABILITATION AREAS AND A BIRD'S EYE VIEW OF THE MINE PIT FROM A LOOKOUT.

The Dialogue's School Mine Tours Program offers Year 5 and Year 9 students from across the Upper Hunter the opportunity to visit a local, operating mine and aims to offer a fact-based, first-hand

educational experience to teach local students about the impacts and benefits of coal mining in the Upper Hunter.

The Dialogue offers the free tours to all schools in the Singleton-Muswellbrook educational catchment and the program uses educational materials and messaging developed by a Dialogue working group made up of teachers, community members and industry and local government representatives.

A DOOZY OF A DOZER!

THANKS TO HEAVY EQUIPMENT EXPERTS COMPONENTS ONLY, WE HAVE A 1:50 SCALE CAT 854K WHEEL DOZER TO GIVE AWAY THIS MONTH.

FOR YOUR CHANCE TO WIN SIMPLY SMS: COMPONENTS ONLY AND YOUR EMAIL ADDRESS TO 0438 474 290.

Limit of one entry per person.
LTPM/17/02507

COMPONENTSONLY

The easiest way to buy and sell heavy equipment components

www.componentsonly.com.au

BY SUBMITTING AN ENTRY, YOU CONSENT TO THE USE OF YOUR CONTACT DETAILS FOR PROMOTIONAL AND MARKETING PURPOSES.



WIN!

CHRIS KNIGHT, BLOOMFIELD GROUP ENVIRONMENTAL MANAGER WITH SINGLETON HIGH STUDENTS.



TWO TEDS ARE BETTER THAN ONE

TED'S VERSATILE ATTACHMENT RANGE IS CONSTANTLY EXPANDING, AND SO TOO IS ITS DEMAND IN THE WORKSHOP AND PIT.

The front mounting **CAT24M GET** attachment is proving to be immensely popular thanks to its ability to get in low to support cutting-edges with as little as just 130mm clearance. You can increase the CAT24m's SWL to 400 Kgs by using it in conjunction with the Nivek Counter Balance.



The newly designed, in-house manufactured **PIT RESCUE TRAILER** is made tough to cope with mining environments and purpose built to make loading and unloading TED and attachments in the field safe, quick and easy.



With its adjustable angle, the **SLOPE JIG** enormously reduces strain and effort, when doing tough jobs like Y-link and ball cap removal whilst minimising the risk of pinch and crush injuries.

The **STANDARD ATTACHMENT PACKAGE** is an absolute must for every TED, massively increasing the tasks TED can take the weight out of. It Includes: Stand locating tool, track roller carrier, steer cylinder cradle and cutting-edge tool.

IF YOUR TED IS IN CONSTANT DEMAND, MAYBE IT'S TIME TO LIGHTEN THE LOAD AND RAISE YOUR SAFETY STANDARDS WITH A SECOND TED!

f/TrackedElevatingDevice
admin@nivekindustries.com.au

0418 517 359
www.nivekindustries.com.au





CANARIES COMBAT CANCER

THE BLOOMFIELD GROUP'S RELAY FOR LIFE TEAM, THE "BLOOMFIELD CANARIES" RAISED A PHENOMENAL \$21,806 FOR CANCER COUNCIL NSW AT THE RECENT MAITLAND RELAY FOR LIFE.

In addition to their outstanding fundraising effort, the Bloomfield Group was also a sponsor of the Maitland Relay for Life which assisted the Cancer Council to offset the costs of running it. Which means more money goes to the people who need it.

BLOOMFIELD CHAIRMAN, JOHN RICHARDS READ THE "RELAY OATH" AS PART OF THE OPENING CEREMONY BEFORE PARTICIPANTS BEGAN THEIR COUNTLESS LAPS AROUND LORN PARK.

Among those were the Bloomfield team of 12 who carried the bright

yellow team "Canary" baton throughout the entire Relay. The team was supported by colleagues, family, and friends.

Chairman of the Bloomfield Group John Richards said: "Congratulations to Cancer Council NSW for a great day of family fun and fundraising. Relay for Life is a wonderful community initiative and we are very proud to be able to provide support. A huge thank you to all who helped the Bloomfield Group's Relay for Life team raise these funds."

THE FUNDS RAISED WILL BE USED LOCALLY BY THE

CANCER COUNCIL NSW SINGLETON OFFICE TO HELP CANCER SUFFERERS, SURVIVORS, AND CARERS IN OUR LOCAL REGION.

Community Programs Coordinator, Glen Parsons said, "For over a decade The Bloomfield Group have been active supporters of not only the Cancer Council but particularly Maitland Relay For Life. As an organisation that is over 95% community funded, we are very grateful to community supporters like Bloomfield who help us deliver our vital services for people affected by cancer in the Hunter."

GET YOUR TEETH INTO THIS

LAST MONTH IN SINGLETON MACH ENERGY AUSTRALIA (MACH) MOUNT PLEASANT OPERATION LAUNCHED A FREE DENTAL SERVICE FOR ABORIGINAL ADULTS THROUGH THEIR ABORIGINAL COMMUNITY DEVELOPMENT FUND (ACDF).

The launch was attended by the ACDF Committee and Chairperson Deirdre Heitmeyer who reiterated the program will enable Aboriginal adults, 18 years and older, living in the Upper Hunter to visit Singleton Dental Care for general dental procedures, from cleaning through to extraction.

Dentist and owner, Doctor Manuel Velarde has been living and practising dentistry in Singleton at Singleton Dental Care since

1998. "Moving to Singleton was one of the best decisions of my life enabling me to own my own practice, work with wonderful staff and have the most incredible patients, I feel blessed by the commitment of my staff and the loyalty my patients have to Singleton Dental Care."

Since its establishment in 2006 the Fund has invested more than \$4M into projects that benefit Upper Hunter Valley Aboriginal communities.



SINGLETON NEIGHBORHOOD CENTRE GIVING TREE



THIS MONTH COMPLETE PARTS WILL HELP SINGLETON NEIGHBOURHOOD CENTRE CELEBRATE CHRISTMAS WITH A DONATION TO FILL THE HEARTS AND STOCKINGS OF THOSE DOING IT A BIT TOUGH.



The newly erected tree in the foyer of Complete Parts already has dozens of prezzies to bring a smile to kids faces Christmas morning. By the time Santa comes to town we suspect there will be so many that

the staff will struggle to get in the door for work each day.

It's a cause close to Complete Parts Felicity Dyson's heart and she want's to make it a Christmas to remember!

"HELP US HELP OUR

COMMUNITY BECAUSE EVERYONE'S CHRISTMAS SHOULD BE MERRY AND BRIGHT' SHE TOLD US."

If you want to spread a bit of cheer as well, head up to Complete and drop your prezzies under the tree!



BIGLIFT CRANES AND HEAVY HAULAGE

- › LOCALLY OWNED AND OPERATED
- › OFTEN CHALLENGED – NEVER BEATEN
- › MORE THAN JUST YOUR LOCAL CRANE COMPANY
- › WE CAN OFFER RIGGER HIRE, SUPERVISOR HIRE, OPERATOR HIRE, CRANE HIRE, HEAVY HAULAGE, GENERAL TRANSPORT, TILT TRAY SERVICES, HARD STAND FACILITIES.

PH (02) 6541 0033

www.bigliftcranes.com.au

13-15 Enterprise Cres Muswellbrook



GETTING IN THE XMAS SPIRIT

CHRISTMAS IS RIGHT AROUND THE CORNER AND THAT MEANS IT IS TIME FOR THE GLENCORE UPPER HUNTER CHRISTMAS SPECTACULAR.

On Saturday December 15 make sure you are at Muswellbrook Race Course for this free Christmas concert where you can enjoy all your favourite Christmas carols. Headlining is Australian Idol winner Damien Leith who will be supported by Charlotte Rhiane, John Morris, The Upper Hunter Conservatorium of Music Orchestra, Mass Schools Choir, Towns Choir and the Muswellbrook High Stage Band. Last year the event attracted thousands of people from right across the Hunter region. PowerFM

Brekky Show host Glenn ‘Stolzy’ Stolzenhein said it’s the biggest event on the Radio Hunter Valley calendar. “Each year the concert gets bigger and bigger! This is the year. The performers, the sound, the entire set up... Bigger and better!” **YOU WON’T BE GOING HUNGRY EITHER WITH PLENTY OF FOOD AVAILABLE FOR PURCHASE OR BRING ALONG YOUR OWN PICNIC WITH YOUR FAMILY AND FRIENDS. BROWSE THROUGH LOCAL MARKET STALLS AND DON’T FORGET TO BRING YOUR INSECT REPELLENT.**

Local businesses are getting right behind it as well with Big Lift Cranes General Manager Billie Sharpe snatching up the opportunity to support a great community event. “We are so excited to be a part of the Glencore Christmas Spectacular this year. We don’t get many events like this locally, so it is so important for local businesses and the community to really get behind it and support it to ensure it comes back bigger and better every year. I’m trying to keep things quiet for now, but Big Lift Cranes has some BIG things planned for the day. We look forward to

seeing everyone there.” This free community event is only possible due to the support and generosity of those who make it happen. Glencore, Upper Hunter Automotive, The Muswellbrook and District Workers Club, Muswellbrook Telstra Shop, Muswellbrook Race Club, Coates Hire, Muswellbrook Shire Council, The Chop Shop, Keldan Automotive, Penski Power Systems, Stellar Recruitment, Big Lift Cranes and Pacific Brook Christian School have all given generously for the benefit of our community.



BULK DEAL

THE WESTPAC RESCUE HELICOPTER SERVICE RECEIVED A BOOST WITH MINING SERVICES COMPANY ORICA UNVEILING A RED AND YELLOW DESIGN ON ONE OF ITS NEW BULKMASTER MOBILE MANUFACTURING UNITS BEFORE IT HEADS TO A SITE IN THE HUNTER VALLEY.

Orica has been a strong supporter of the Westpac Rescue Helicopter Service since 2015, contributing more than half a million dollars to the Service over that time. This new initiative is designed to raise funds and awareness for the Service throughout Northern NSW. **“THE WESTPAC HELICOPTER SERVICE IS A VITAL LIFELINE FOR THE COMMUNITY. WE’RE SO PROUD OF OUR PARTNERSHIP WITH THE SERVICE THAT WE’VE PAINTED ONE OF OUR BULKMASTER 7 TRUCKS IN THEIR COLOURS, TO LEND SUPPORT AND SPREAD AWARENESS,” SAID ORICA’S VICE PRESIDENT FOR AUSTRALIA PACIFIC, TODD PEATE.** “Our partnership expands on the existing support from Orica employees who have generously

contributed through Orica’s ‘Dare to Share’ payroll deduction program over many years, with Orica matching our employee donations, dollar for dollar.” CEO Westpac Rescue Helicopter Service, Richard Jones, said that support from companies like Orica, and its staff, is vital. “It ensures future operations every day of the year and still nobody ever has to pay to be assisted by the Service. We truly appreciate the long term and valued support from Orica,” he said. “This is a creative opportunity to continue engaging with the mining community in the Hunter Valley. As it moves to sites we will be saying thanks to all miners and the mining services companies who have supported us over many years.”

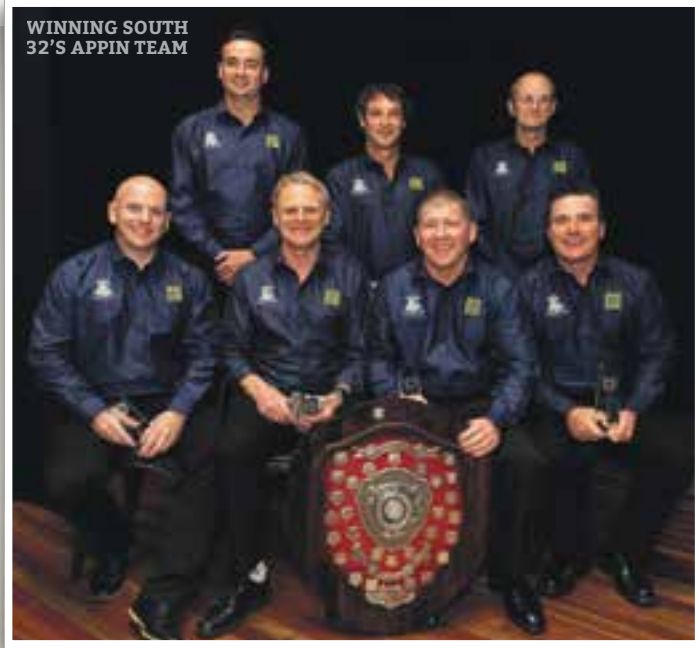


PH +61 (2) 6540 9400
mrssg.net info@mrssg.net

39-43 Thomas Mitchell Drive
Muswellbrook NSW 2333 Australia

Civil & Earth Works

- MINE REHABILITATION PROJECT TEAM
- CONVEYOR AND MATERIAL HANDLING CLEAN-UP SUPPORT
- POLY PIPE SUPPLY AND INSTALL
- INFRASTRUCTURE AND GENERAL MAINTENANCE INCLUDING LANDSCAPING
- TRAFFIC CONTROL SOLUTIONS (RMS APPOINTED TRAFFIC CONTROLLERS)
- CIVIL WORKS AND PROJECTS
- ROAD AND CONSTRUCTION MAINTENANCE
- FLOAT HIRE
- MOBILE INDUSTRIAL PRESSURE CLEANING
- MOBILE INDUSTRIAL BLAST AND PAIBTING



WINNING SOUTH 32'S APPIN TEAM

CHAMPION EFFORT

SOUTH 32'S APPIN TEAM TAKE HOME THE WIN AT THE 56TH AUSTRALIAN MINES RESCUE COMPETITION HELD AT ANGLO AMERICAN'S GROSVENOR MINE IN QUEENSLAND.

The Appin team put in an outstanding effort to become the 2018 Australian Mines Rescue champions, with Queensland's Anglo American Grosvenor mine coming in second, followed by Kestrel mine who took out third place.

The event saw Australia's most elite brigadesmen test themselves against the best of the best. Competing teams qualified for the event after winning their regional events throughout the year across Queensland and New South Wales.

THE EVENT ALSO PROVIDED A PLATFORM TO REASSURE THE AUSTRALIAN UNDERGROUND MINING INDUSTRY OF THE EXCEPTIONAL SKILL LEVEL AND EMERGENCY PREPAREDNESS CAPABILITIES THAT IS AVAILABLE IN THE UNFORTUNATE EVENT OF A MINING EMERGENCY.

All teams participated in a challenging mix of underground and pit-top emergency scenarios. These included technical skills assessment, firefighting, search and rescue exercises and first aid. A theory exam challenged the depth of their mines rescue knowledge and a scenario using virtual reality technology.

New South Wales Mines Rescue (NSW Mines Rescue) State Manager Steve Tonegato congratulated the Appin team.

"It was fantastic to see the New South Wales Appin team win the event on the day, having won the event two years ago in Queensland. The real winners of competitions such as these are our



mining communities. These events are critically important in building skills and capabilities that continue to protect our industry and its workers."

APPIN TEAM CAPTAIN, MALCOLM WATERFALL, RECOGNISED THE EFFORTS OF THE TEAMS AND THOSE INVOLVED WITH PLANNING AND EXECUTING THE COMPETITION.

"Firstly, I'd like to thank Grosvenor Mine for hosting the Australian competition at short notice and in difficult circumstances. Tremendous credit goes to them and the QMRS and NSW MRS in organising

a challenging and varied competition which ran without a hitch despite the mine being involved in a longwall move. Credit goes to all the teams that competed. The standard of the teams is such that any of the teams could have won the competition on the day."

"It goes without saying that as a team we are delighted to have performed well enough on the day. We didn't have the smoothest of preparations and it is a credit to the individuals that the spirit engendered in the team over the last nine years enabled us to put it together on the day," Malcolm added.



NSW MINING



Good for jobs. Good for NSW

WHAT IS THE SINGLE BEST THING YOU CAN DO FOR YOUR HEALTH?

IN MY ROLE AS A PHYSIOTHERAPIST I OFTEN FEEL A BIT LIKE "THE AMBULANCE AT THE BOTTOM OF THE HILL".

What I mean by this is that us Physio's spend a lot of our time helping folks get better after they have suffered an injury. Customers want us to make them feel better, take the pain away, help them move and get back to their busy lives.

As rewarding as it is to see people get better, I've found that in many instances there is little focus on prevention. Prevention of re-injury, or even better preventing first time injuries and other lifestyle diseases. I once heard the famous radio and TV personality Dr Karl Kruszelnicki say: **"BLOKES TAKE BETTER CARE OF THEIR CARS THAN THEY DO OF THEIR BODIES."**

This struck a chord with me as ringing true: as blokes (and women too!) are usually diligent when it comes to preventative maintenance of our cars. We do the service every ten thousand k's, change out the oil, filters, rotate the tyres etc. with the knowledge that if we take care of the

vehicle then it will serve us well for many years and hold its value. But when it comes to our bodies we don't think this way.

We tend to put up with pains, aches and other problems and it's not until the issue is really affecting us and our partner has dragged us along to the doctor or another health professional that we do something about it. And even then, we typically take a very short-term view on getting over the problem. Prevention rarely even gets a mention!

So, what is the one best preventative thing you can do for your health?

THE ANSWER IS 30MINS EXERCISE PER DAY OR 150MINS PER WEEK.

Are you performing any regular exercise? You don't need to be flogging yourself in the gym and it can include just going for a walk for 20 minutes, it all adds up. Just move more.

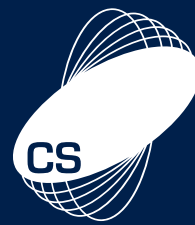
Those of us working mine rosters find it especially challenging to get that exercise into our lives. Rotating shift work constantly changes up sleep patterns making it hard to be regular.

Studies have clearly shown that if you can achieve this amount of exercise per week then your life will improve across a number of areas: mental health, blood pressure, obesity, osteoarthritis, diabetes, cardiovascular disease, quality of life and life expectancy. Check out this great mini lecture by Dr Mike Evans:

[youtube.com/watch?v=aUaInS6HIGo](https://www.youtube.com/watch?v=aUaInS6HIGo)

Ask yourself honestly if you are you happy with your physical health. If the answer is no, then commit yourself to 30mins exercise every day and I promise you will soon see the benefits.

Guy Higgins, APA Sports and Musculoskeletal Physiotherapist Singleton and Bransford Physiotherapy and Allied Health



CS Health

PROTECTING INDUSTRY



CS Health offers retired coal mine workers a range of services at no charge.

- Ongoing health surveillance medicals, including chest x-rays
- Access to CS Health gyms during business hours
- A full gym induction and exercise program
- Annual exercise program review

For further information visit or contact:

Singleton
1 Civic Avenue
T: 6571 9900

Speers Point
143 Main Road
T: 4948 3100

www.coalservices.com.au

'AVE A LAUGH WITH

PH 6571 1589



NOW HIRING TORO MOWERS & HAND HELD EQUIPMENT

This arrogant young guy has recently started work at a construction site and ever since he started he's been bragging that he could outdo anyone based on his superior strength. He's been making fun of one of the older workmen in particular.

Eventually, the older worker has had enough and says, "Tell you what - why don't you put your money where your mouth is? I'll

bet you a week's wages that I can take something over to that other building in this wheelbarrow and you won't be able to wheel it back."

The young guy laughs confidently, "You're on, old man. Let's see what you've got."

The old guy grabs the wheelbarrow by the handles. Then, he nods to the young man as he says with a smile, "Alright. Get in."



GOLDEN
DERRIÈRE

\$100 BILL TOILET PAPER ROLLS ARE FOR THE WANNABE MILLIONAIRES. IF YOU REALLY WANT TO SHOW OFF YOUR WEALTH, GET YOURSELF A ROLL OF 24 CARAT GOLD TOILET PAPER. IT WILL ONLY SET YOU BACK A MILLION OR SO BUCKS!

What makes the gold toilet paper roll special, is not only the obvious gold, but the fact that sparkling gold flakes gently fall onto the floor while you're wiping.
www.toiletpaper.com.au

VIEW FROM THE TOP

WANT TO SNORKEL BUT DON'T LIKE GETTING WET OR WEARING A MASK?

With the Transparent Kayak by Driftsun you can see what all the little fishies are doing while you gently paddle across the water.
Just remember to look out for any scuba divers as they might also get an eyeful!
www.driftsun.com



WATCH OUT!

THE NEW APPLE SERIES 4 WATCH HAS A BUNCH OF NEW FEATURES, AND ONE COULD EVEN SAVE YOUR LIFE!

Built into the back of the sapphire crystal and digital crown, users can now take an electrocardiogram (ECG) — the first of its kind in a smartwatch. This will measure electrical activity of the heartbeat in order to help diagnose heart disease and other conditions which could end up saving your life.
Remember the days when a watch was for telling the time?
www.apple.com.au

Dedicated to helping
coal miners

Stuart Barnett is the most experienced coal mining compensation lawyer in NSW with over 28 years practising this specialised area. Over this time, he and his team have helped thousands of coal miners access the compensation and support they rightfully need.
Stuart will explain your rights and take you step by step through the legal process. He wants you to know exactly where you stand and that is why he offers an obligation free chat with him so you get the expert advice you need.



Stuart Barnett
State Practice Group Leader
Accredited Specialist in Personal Injury Law

As well as specialising in coal mining compensation law, Stuart and his team can help with:
+ Workers' Compensation + Road Accident and Public Liability Claims
+ Dust Disease & Medical Law + Conveyancing + Wills and Estates Planning

We Win Cases Like Yours, Get in Touch
1800 991 394

+ Slater
Gordon
Lawyers



TO INFINITI AND BEYOND

INFINITI'S PROJECT BLACK S PROTOTYPE SPORTS FORMULA ONE HYBRID TECH IS A RACE DRIVERS' CAR FOR EVERYDAY PEOPLE.

The Project Black S is based on the Infiniti Q60 Red Sport and uses that model's 3.0-liter twin-turbocharged V6. A "motor generator unit-kinetic (MGU-K)" harvests energy from braking, similar to the regenerative braking systems in production hybrids and all-electric cars. A special pair of turbochargers comprise the "motor generator unit-heat (MGU-H)" element, using heat from the

exhaust to generate electricity. The hybrid system adds 163 horsepower to the V6's output, for a total of 563 hp. Infiniti estimates the Project Black S will do zero to 62 mph in under four seconds.



www.infiniticars.com.au



OLD SCHOOL

IF YOU GREW UP IN THE 90'S THAN THIS WILL BRING BACK SOME MEMORIES.

The Sony Playstation Classic will be out December just in time for Christmas. Though smaller than the original it will pack a lot more punch. Game titles including Tekken 3 and Jumping Flash and we hope Sony will also throw in Crash Bandicoot, Tomb Raider and Resident Evil for old times' sake.

www.jbhifi.com.au

WATER WARRIOR

IF YOU CAN ONLY BUY ONE PIECE OF SNORKELING GEAR, MAKE IT THE H2O NINJA MASK.

The revolutionary full-face snorkeling mask lets you breathe normally under the water, just the same as you would on land. The mask features a detachable action camera mount, leaving your hands free for more important things, like swimming!

www.amazon.com



Double R EQUIPMENT REPAIRS

The established and trusted name in mining.

Double R is an award winning "One Stop Shop" offering New Machinery Sales, and Trade Services to the Mining, Transport, Agricultural, Marine, and Construction industries. Authorised sales and service dealer for Deutz Fahr, and Dieci Telehandlers.



- HEAVY EQUIPMENT REPAIRS
- HEAVY VEHICLE REPAIRS
- UNDERGROUND HARD ROCK EQUIPMENT REPAIRS
- RMS AUTHORISED INSPECTION STATION
- LIGHT VEHICLE REPAIRS
- AUTO ELECTRICAL
- AIR CONDITIONING REPAIRS AND SERVICING
- TRUCK AND LIGHT VEHICLE WHEEL ALIGNMENTS
- LABOUR HIRE
- ENGINEERING AND MACHINING
- BOILER MAKING AND FABRICATION
- STRUCTURAL CONDITIONING AND PAINTING TO SPECIFICATION
- MOBILE LINE BORING
- LIQUID NITROGEN
- UNDERGROUND COAL SERVICES

Why should you engage Double R?

| | |
|------------|---|
| TEAM | A GREAT CULTURE COMMITTED TO THEIR CLIENTS |
| ONE STOP | EXTENSIVE SERVICES AVAILABLE AT THE DOOR STEP |
| ADAPTIVE | DEVELOPS CUSTOMISED SOLUTIONS TO THE NEED |
| RESPONSIVE | DELIVERING AND EXCEEDING EXPECTATIONS |
| RELIABLE | CONSISTENCY OF DELIVERY |

HUNTER VALLEY
02 6571 4249
huntervalley@dblr.com.au

LEINSTER
08 9037 3804
leinster@dblr.com.au

GUNNEDAH
02 6780 9601
gunnedah@dblr.com.au

KARRATHA
08 9185 2699
karratha@dblr.com.au

MUDGEE
02 6372 3257
mudgee@dblr.com.au

dblr.com.au





BADGERS DOMINATE ON DEBUT

ON THE DAY OF DAYS AT THE 5TH ANNUAL A-PLUS CONTRACTING HUNTER VALLEY MINING CHARITY RUGBY LEAGUE COMPETITION AT PIRTEK PARK SINGLETON IT WAS THE DEBUTANTS FROM BENGALLA THAT FLEXED THEIR MUSCLE OUT OF THE 18 TEAMS THAT COMPETED.

There may be some salary cap questions surrounding the squad with no shortage of talent, but it would be the ever-reliable Jackson Anshaw who was johnny on the spot to clean up a in goal miss-que from the Hunter Valley Operations United Cobras, to pounce on the match winner.

In the ladies challenge it was the Hunter Hawkettes who were victorious over the Valley Vixens in a 3-0 game in the second annual “Women in Mining” series. Bengalla’s Kurt Barnes, who blitzed it as H2O specialist for the Badgers, might be able to help the ladies out with some tips, given he spent more time on the field with a water bottle than Alfie Langer. Luke Holz added his input from

the sideline as usual, though this time in a coaching role. I think everyone in the crowd thought he was commentating and the only person more theatrical then him in a coaching role is Ricky Stuart. A shout out definitely needs to go to their first aid attendant, strapper, water boy and all-round good bloke Derek Wicks (who also helped out other teams that were short). He kept the team together better than anyone, and I believe was



HUNTER VALLEY MINING
CHARITY RUGBY LEAGUE
KNOCKOUT COMPETITION 2018

stripped of Man of the Final by player Daniel Hoogerwerf. Outrageous! Hand it over Hoogs you imposter.

ALTHOUGH, UNDENIABLY THE BIGGEST WINNER ON THE DAY WAS THE WESTPAC RESCUE HELICOPTER SERVICE WITH A RECORD BREAKING \$85,000 RAISED, BRING TOTAL FUNDS RAISED DURING THE PAST FIVE YEARS TO JUST SHY OF \$300,000.

Event Coordinator and Community Liaison Officer for the Westpac Rescue Helicopter Service Danny Eather said he is just astounded by the continued support of the both the business community and the wider community in

supporting this event. ‘Being our 5th annual event, we are truly blown away by the continued support of the event, which continues to grow year on year.’

‘Our team of committed volunteers have worked hard to establish this event to be a highly anticipated event on the local sporting calendar. This was evident in the number of spectators that attended, with over 2500 attendees passing through the gate during the day, which is heart-warming’ Danny said. Well done to all involved and maybe some other “mines” can take note and get onboard and get involved with their sides for the 2019 Challenge.



BRAGGING RIGHTS CLAIMED & \$85,000 RAISED

To our local coal miners, our event partners, team sponsors we say a massive thank you for your continued support and contributions towards this annual event which has raised close to \$300,000 for the community's own Westpac Rescue Helicopter Service.

We look forward to next year...

BENGALLA BADGERS & HUNTER HAWKETTES 2018 Champions



Supporting the Westpac Rescue Helicopter Service

1800 155 155 | www.charityrugbyleagueday.com.au



BENGALLA GROUP 21 CRL 9'S IN FULL SWING

IT'S THAT TIME OF THE YEAR WHEN THE LADIES DITCH THE LEAGUE TAGS FOR FULL CONTACT RUGBY LEAGUE IN THE 3RD ANNUAL CRL 9'S IN GROUP 21 AND THEY ARE PUMPED TO PLAY.

It wasn't that long ago that some of the ladies were able to get their first taste of full contact in the Mines Charity match, and it appears to have been the extra advantage some girls are harnessing. Jessyca Morgan was one of the ladies to get the extra games experience and lives for this time of the year.

"The CRL 9's is a great concept and it is something to look forward too after the League Tag competitions," says Morgan. "Without a doubt this year has kicked off with some great competition, and its fantastic to have Greta-Branxton and Scone in this year. Scone have been very dominant in ladies league tag and will be a threat, but I feel confident we have a great side this year."

IN THE PAST THE SINGLETON GREYHOUNDS HAVE BEEN AN ENTERTAINING SIDE, THOUGH WITH NO TEAM IN THIS YEARS' COMPETITION IT WILL BE BATTLED OUT BETWEEN ABERDEEN, GRETA-BRANXTON,

MERRIWA, MURRURUNDI, MUSWELLBROOK AND SCONE.

In Scone's first year, they will be out to prove that they can match their success in League Tag with the contact side of the game. We hear that the Greta Branxton side are ones to look out for when they have enough game time to gel. Is 5 weeks enough time though? Only time will tell. One thing is for sure, getting out to finish the week watching one of these rounds is something that must be added to the calendar.

IT'S FAIR TO SAY THAT SOME OF THESE MATCHES ARE MORE ENTERTAINING AND COMPETITIVE THAN SOME OF THE PERFORMANCES IN THE MEN'S COMPETITION.

With League Tag flourishing in the Group under the supervision of its initiator Jane Walmsley, the question is constantly raised about full contact throughout the season. We think there is a place for both and the

ladies competition is going from strength to strength. Maybe one day there may be a perfect formula to accommodate those that want to do both in our Group, but for now it's all positives throughout ladies Rugby League.

WHILE WE WATCHED THE LADIES TOSS AROUND THE FOOTY AN IDEA HAS BEEN TOSSED AROUND OFF FIELD. WHY NOT A LADIES 9'S REGION OF ORIGIN? SIMILAR TO A STATE OF ORIGIN, BUT WITH THE BEST PLAYERS FROM THE PRE-SEASON 9'S SELECTED FOR A MID-SEASON ONE OFF REPRESENTATIVE MATCH (AS LONG AS THEY ARE STILL PLAYING IN THE GROUP).

The Northern Side would feature players from Murrurundi, Scone, Aberdeen and Merriwa, whilst the Southern side would be selected from those from Muswellbrook, Denman, Singleton and Greta-Branxton. The venue could be split amongst the winning side in rotation each year, with the inaugural match to take place this year as a headline for the Festival of The Fleeces. Some food for thought. How good would

THE REMAINING COMPETITION GAMES ARE AT:

Greta Central Oval on Friday the 16th of November, Scone Park on the 23rd of November and Wilson Oval Murrurundi 30th of November with the first games commencing at 6pm.

The Final will be at Olympic Park, Muswellbrook on Friday the 7th of December with games to start from 6.15pm.

that be. Of course, you would have to have a selection panel of 3-5 independents to make it fair.

The Northern Side could play for the Where There's a Will Foundation, with the Southern Side (the Southern Angel's) playing for the

rescue helicopter to keep those Angels in the sky, with money raised going to both. Just throwing the ball out there gals. I am sure both organisations would welcome the opportunity to be involved.

THE SHOUT'S ON US!

WIN A CASE OF XXXX GOLD TO CELEBRATE THE GOOD TIMES THANKS TO THE CLUBHOUSE.



For your chance to win, simply SMS: THE CLUBHOUSE, your name and your email address to 0438 474 290.

Limit of one entry per person.
LTPM/17/02507



SPORT @ THE COALFACE IS BROUGHT TO YOU BY THE CLUBBY AND LOCAL LIQUOR



BY SUBMITTING AN ENTRY, YOU CONSENT TO THE USE OF YOUR CONTACT DETAILS FOR PROMOTIONAL AND MARKETING PURPOSES.

S.E.S.

LABOUR SOLUTIONS



A true labour hire partner looking at long term labour solutions over short term gains and the value that our people can provide through an innovative and people-focussed approach.

- BE PART OF A TEAM THAT CARES!
- SAFETY ABOVE ALL ELSE
- INTEGRITY IN EVERYTHING WE DO
- TEAM WORK AND A SENSE OF FAIR PLAY
- HONESTY AND TRANSPARENCY

www.sesls.com.au | 0436 621 490 | nsw@sesls.com.au

Find us on

MACHEnergy

Mount Pleasant Operation

DEDICATED
TO THE JOB,
**PASSIONATE
ABOUT LIFE.**



machenergyaustralia.com.au

“100% of our surpluses are used to benefit our Members”

Can your bank do that for you?

Unity Bank is proud to be a Member Owned financial institution that offers a wide range of financial products and services to our Members and their families. We offer a banking alternative to the big 4 that is solely Member focused. There are no external shareholders, so this means any surplus is returned to Members in the form of better interest rates, products and services.

- Home Loans
- Savings Accounts
- Insurance
- Personal Loans
- Credit Cards
- Term Deposits

**If you feel it's time to own your banking,
become a Member today!**

Contact **Brad Williams** on **0417 005 883**, email mail@unitybank.com.au,
call **1300 36 2000** or visit unitybank.com.au



**Unity
Bank**
your bank at work

Unity Bank Limited. | ABN 11 087 650 315 | AFSL/Australian Credit Licence 240399.

A MACHINE THAT LIKES IT ALL WAYS

OF ALL THE EARTHMOVING KIT ROLLING AROUND OUT THERE, THE SCRAPER MUST BE THE STRANGEST OF THEM ALL.

Used in bulk earthworks, you will often see scrapers being used in the development of highways and land subdivisions, where large amounts of dirt need to be moved quickly and cost effectively.

Rarely used in dry hire, these highly specialised machines require experienced operators to work to their best potential. Although available in 'pull-type' arrangements (think a scraper bowl being towed by a tractor), you're more likely to see self-propelled models with one engine located in the front tractor unit or, in the case of a tandem powered scrapers, the addition of a second engine propelling the wheels at the rear of the scraper.

REGULARLY USED IN MINING AND AGRICULTURAL APPLICATIONS, SCRAPERS COME IN TWO CONFIGURATIONS USING EITHER AN 'ELEVATING' OR 'OPEN BOWL' SETUP.

Unlike 'open bowl' scrapers that hydraulically lower a cutting edge into the ground, the 'elevating' scraper is self-loading and uses a hydraulic or electrically powered chain-type

elevator to lift the material into a raised bowl.

With the ability to average a little over 50km/h loaded, it's little wonder that these machines allow earthmovers the ability to quickly load and dump earth on the run, yielding fast cycle times and some of the lowest costs per tonne of earth moved in the industry.

Specifically designed to handle steep grades greater than 5%, the tandem-powered scrapers are highly versatile and can operate independently, in a push-pull configuration with another scraper or, in particularly tough conditions with the support of a bulldozer

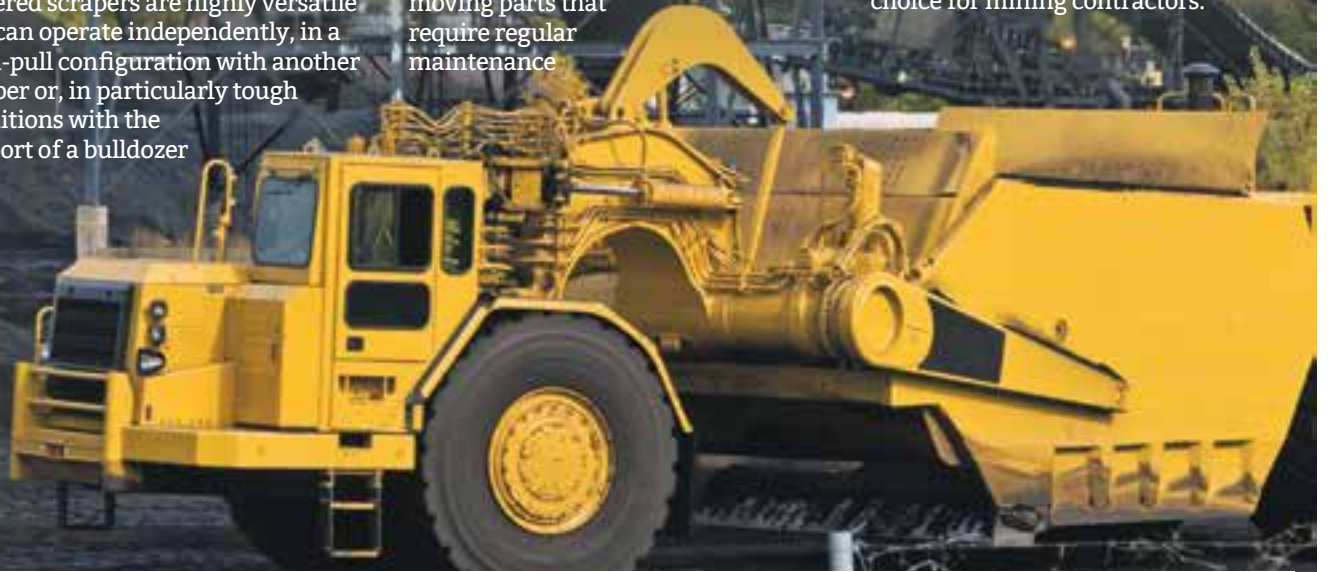
pushing from behind.

LIKE SO MANY OTHER SEGMENTS OF THE EARTHMOVING MARKET, CATERPILLAR ARE THE DOMINANT PLAYER IN THIS SECTOR. OFFERING 16 MODELS, THEY PROVIDE A RANGE OF SCRAPER SIZES WITH BOWLS AS SMALL AS 17.6M3 IN THE 621K THROUGH TO 56 M3 IN THEIR FLAGSHIP 657G.

Albeit durable, scrapers have many moving parts that require regular maintenance

to ensure reliable operation. While some might argue the higher costs of maintaining a dual powered scraper, these machines assure more work days per year by working through underfoot conditions that generally stop two-wheel-drive scrapers.

In the Valley, they are the most common mining scrapers, with the 637 and 657 machines found on many sites. Rounding out three tandem driven options that also includes the 627, they are often the scraper of choice for mining contractors.



THANKS TO COMPONENTS ONLY, OUR HEAVY EQUIPMENT EXPERTS

COMPONENTSONLY
The easiest way to buy and sell heavy equipment components

Process Equipment Wear Prevention Asset Management Engineering and Mechanical



Providing industrial solutions since 1978

www.hicservices.com.au

DON'T WALK, WELD

GAME-CHANGING TECHNOLOGIES THAT CAN IMPROVE PRODUCTIVITY, SAFETY AND PROFITABILITY.

With an ArcReach system, amperage and voltage are conveniently located at the operator's fingertips - not back at the source. Increase productivity with Miller ArcReach - more welds in less time.

www.allweldservices.com.au



Truckfit is a locally owned and operated business located in Rutherford that prides itself on quality and customer service. Able to build basic to a fully customised tray, basic alloy canopies or tradesman's boxes to them fitted out with draws, shelving, fridges, lighting ect. Mine spec vehicles in bulk orders aren't a worry also.

www.truckfit.com.au

PUMPS BUILT TO OUTPERFORM



THE TRU-FLO VAC-ASSIST SERIES PUMPS ARE DESIGNED FOR MINING AND CONTRACTING COMPANIES, PROVIDING THEM WITH EXTREMELY HIGH-PERFORMANCE PUMPS WITH AN EFFECTIVE SOLUTION FOR A WIDE RANGE OF APPLICATIONS.

These pumps are designed to provide maneuverable, easy to handle, rugged and reliable solutions. Used extensively by major mining companies, rental and dewatering contractors, they continue to outperform others every time.

www.truflopumps.com.au




TUFF AS NUTS

TUFFNUTS SPECIALISES IN 100% AUSTRALIAN MADE, HEAVY DUTY, FOAM-BACKED 12oz CANVAS SEAT COVERS THAT ARE FULLY WATERPROOF AND COME WITH A FULL TWO-YEAR WARRANTY.


They are ideally suited to harsh working environments, including the mining, earthmoving and agricultural industries with seat covers to suit a full range of vehicles and machinery, even including tractors, motor bikes, quad bikes and heavy equipment.

www.tuffnutscovers.com.au






OPERATIONAL EQUIPMENT HIRE




WITH 24 HOUR SUPPORT
All of our equipment (which includes our LED lighting towers) comes with 24 hour breakdown assistance, is either low hours or brand new and can be hired wet or dry. We also supply relevant safety gear and information and carry out regular servicing.

ONSITE LABOURING SOLUTIONS



We supply onsite mechanical staff, onsite auto electrical staff, operators, as well as general labour. Every member of our carefully selected labour team comes site inducted and has extensive experience in their field.

AUTOMOTIVE SERVICES



INCLUDING WORKSHOP WITH 8 BAY SHED AND GROUND PIT
Our highly-trained team covers electrical, mechanical and air-conditioning maintenance and repairs for all types of vehicle. We stock an extensive supply of parts, and also offer other services such as free pickup and delivery.

Phone: 02 6543 2307

Web: www.nwminingcompany.com.au

Lot 14 Thomas Mitchell Drive Muswellbrook NSW 2333

ABN/ACN: 48147724552/147724552

KING OF THE JUNGLE

THE CATERPILLAR D11T/D11T CD DOZER IS DESIGNED WITH DURABILITY BUILT IN, ENSURING MAXIMUM AVAILABILITY THROUGH MULTIPLE LIFE CYCLES. BY OPTIMISING PERFORMANCE AND SIMPLIFYING SERVICEABILITY WITH OUR MODULAR DESIGN, OUR MACHINES MOVE MORE MATERIAL EFFICIENTLY AND SAFELY AT A LOWER COST PER TON.

Including safety enhancements, improved operator comfort, and productivity increasing electronic features, it will keep your business strong for generations to come.

www.westrac.com.au



MOW OVER

A WELL-PRESENTED MINE SITE IS A SIGN OF A WELL-RUN MINE AND WHEN YOU HAVE A LOT OF GROUND TO COVER YOU NEED A MACHINE THAT KEEPS UP.

Toro's Z Master® Professional 6000 Series fits the bill with the power and comfort you demand. From the powerful 31 hp Kawasaki® V-Twin engine, vibration-absorbing deluxe suspension seat to the high-strength steel TURBO FORCE® deck, it's built to work hard and run at optimal levels.

www.sconeoutdoors.com.au

WHEELS UP

FOR THE SAFE AND TIME EFFICIENT HANDLING OF WHEEL ASSEMBLIES ON A RANGE OF MINING EQUIPMENT YOU NEED THE HEDWELD TH15000 WORKSHOP TYRE HANDLER.

It is space efficient (operates in a single work bay), remote controlled and handles R49-R63 inner and outer tyres. Sites can achieve ROI after handling 126-wheel assemblies.

www.hedweld.com.au



Innovation that excites

NISSAN INTELLIGENT MOBILITY

0%

P.A. COMPARISON RATE*
36 MONTH TERM
50% FINAL PAYMENT

AROUND VIEW®
MONITOR

NISSAN NAVARA
ST 4x4 DUAL CAB MANUAL
\$145 P/W*^(a)
\$44,990
DRIVEAWAY - ABN BUYERS

NISSAN NAVARA
ST-X 4x4 DUAL CAB MANUAL
\$161 P/W*^(b)
\$49,990
DRIVEAWAY - ABN BUYERS



GREAT 0% DEALS ALSO ON QASHQAI AND X-TRAIL

Singleton
automotive centre

PHONE: (02) 4040 6200

45 JOHN ST, SINGLETON

*Conditions, fees and charges apply. 0% Comparison rate for approved personal and business applicants of Nissan Financial Services (Australian Credit Licence Number 391464). 0% APR. Maximum 36 month term. WARNING: This comparison rate is true only for the example given and may not include all fees and charges. Different terms, fees or other loan amounts might result in a different comparison rate. This comparison rate for the purpose of the national credit code is based on 5 year secured loan of \$30,000, although this offer relates to a 36 month term only. Offer available on new and demonstrator eligible vehicles purchased between 1/10/2018 and 31/10/2018 and delivered within 30 days of end of month in which vehicle is ordered. Excludes Government, Rental and National Fleet customers. Nissan reserves the right to vary, extend or withdraw this offer. Not available in conjunction with any other offer. (a) \$44990, (b) \$49990 financed over 36 monthly repayments of (a) \$624.86, (b) \$694.31 and a final payment of (a) \$22495.00, (b) \$24995.00. Total amount payable over the term (a) \$44989.96, (b) \$49990.16. Premium paint available at additional cost.

HOT ROD

FROM RACING CARS, TO RESTORING VINTAGE SPEEDWAY CARS, TO DRIVING TRUCKS CARTING COAL AT RIX'S CREEK, ALLAN BATES LOVES TO GET BEHIND THE WHEEL.

Allan's love for racing started at the age of 4 when he went to his first meeting in Muswellbrook to watch the TQ's and Motorbikes in 1960. A few years later he met John Smith who lived down the road who also shared his passion for race cars. For Allan it

was a dream come true when John agreed to let him help work on his cars. Allan went on to complete a panel beating apprenticeship at John's smash repairs, Smith's Smash Repairs, before moving on to driving road trucks transporting coal between Muswellbrook and Port Waratah. For the last 19 years, Allan has been working for a contracting company as truck driver at Rix's Creek Coal carting coal from the washery to the train loader.

"I JUST LOVE TO DRIVE AND I'M LUCKY TO HAVE A JOB I ENJOY WHERE I DRIVE EVERY DAY. BUT MOST OF ALL I LOVED IT WHEN I USED TO RACE. THE SPEED, THE THRILL, AND THE SKILL INVOLVED, IT



BACK IN THE EARLY DAYS RACING SPRINTCARS

WAS HEARTBREAKING WHEN I HAD TO GIVE IT UP," ALLAN SAID.

Allan's first race car was a TQ (Formula 500). He raced it all over NSW in the 70's. In 1977 he had his first race in a Hot Rod at Newcastle Motordrome and in 1983 and 1984 he won two back to back NSW titles and placed 2nd in the Australian titles in 1984.

In 1985 he moved on to Sprintcars. In his first race at Newcastle Motordrome he was titled Rookie of the Year and in 1987 he won the Winfield Sprintcar Masters Feature Race.

In what would turn out to be his last ever race 1992, he blew the engine in his Sprintcar which ended his racing career. This was very disappointing for Allan but maintaining and repairing the cars for such an expensive sport made it no longer possible for him to continue.

"EVEN THOUGH I GAVE UP RACING, I NEVER LOST MY PASSION SO IN IN 2000 I GOT INTO RESTORING VINTAGE SPEEDWAY CARS AND DEMONSTRATING THEM AT RACE MEETS WITH THE NSW VINTAGE MODIFIED ASSOCIATION. I ALSO DISPLAYED THEM AT CAR SHOWS AROUND THE COUNTRY AND MY FAMILY GOT INVOLVED. MY DAUGHTERS TINA AND SAMANTHA AND MY WIFE MARIE WOULD COME ALONG AND DRIVE AT SOME OF THE MEETS, SO IT BECAME A GREAT FAMILY AFFAIR."

Since 2001, Allan has restored four vintage speedway cars and has another one in progress. Each car takes about three years from start to finish and he has no plans to stop here. But it's the hot rods that mean that most to him.

"My two favorite cars over the years are



ALLAN WITH TINA AND SAMANTHA

the Green & Blue number 57 Hot Rod's. I built the Green 57 from scratch back in 1979 before selling it a couple years later so I could purchase the Blue 57 which I won two NSW titles in. I sold it in 1984 when I moved onto Sprintcars."

In 2001, during his search to find the Blue 57, Allan's daughter heard that the original frame and body were in a paddock at Glennie's Creek. Never in a million years did he imagine it was his car but sure enough it turned out to be the Green 57.

Once again, he started to rebuild it completing it in 2003. After years of searching he found the original rolling chassis and body of the Blue 57 in someone's backyard in Toronto. Again, the rebuild process started and was finally completed in 2009.

"IT'S BEEN A LONG HAUL WORKING ON SOME OF THESE CARS BUT WORTH THE EFFORT. I'VE STILL GOT ABOUT TEN SPEEDWAY CARS AND BIKES IN VARIOUS STAGES OF RESTORATION TO BE COMPLETED IN THE COMING YEARS. RIGHT NOW, I AM IN THE PROCESS OF RESTORING THE FIRST SPRINTCAR I DROVE IN 1985. I'LL KEEP ON DRIVING AT RACE MEETS AND RESTORING CARS FOR AS LONG AS I'M ABLE."

Mining & Site Specific

We spec to suit your needs



We offer a diverse range of vehicles on request.
To find out more call us today!

1300 879 289

Visit thrifty.com.au

Thrifty
CAR & TRUCK RENTAL



PH +61 (2) 6540 9400

mrssg.net info@mrssg.net

39-43 Thomas Mitchell Drive
Muswellbrook NSW 2333 Australia

Mechanical

**LARGE MINING EQUIPMENT
MECHANICAL REPAIRS**

WORKSHOP SERVICES:

- MIDLIFE REBUILDS
- ENGINE CHANGE OUTS
- DEFECT REPAIRS
- EQUIPMENT COMPLIANCE

FIELD SERVICES:

- PLANT MECHANICS, AUTO ELECTRICIANS, HV ELECTRICIANS
- AIR CONDITION SERVICES



SCHOOL JEWFISH ARE WILLING TO PICK OFF SOFT VIBE OFFERINGS AROUND THE LOCAL RIVERS.

IT'S A GOOD TIME TO FISH

FINALLY, THE MUCH-NEEDED RAIN HAS HIT THE HUNTER AND WITH THE PADDOCKS LIVENING UP SO HAS THE FISHING.

OFFSHORE

The Snapper continue to play along the coast chewing on soft plastics. We recently found the fish have been holding under the masses of Pilchards that have been hanging around off the coast. Lightly weighted grubs sinking through the bait that's been pushed up around the reef edges has been doing most of the damage.

Reports of plenty of King Fish are schooled up out wide towards Allmark Mountain, with a few solid

Bar Cod resting under the Kingies waiting for a live bait that happens to slip past.

As we punch the keys to belt a few words together for November's issue, a quick inspection of the Temp charts was made, and it would seem the first push of warm water is heading our way and this only means one thing for us; and that's stinking hot weather and a Pelagic time of year.

The FAD's have been deployed along the coast with this issue hitting the

ALEX BLAYDEN CAUGHT A 48CM YELLOW BELLY ON LIVE YABBIES AT GLENBAWN DAM

SEND US A PIC OF YOUR YOUNG GUN TO WIN A \$50 BCF VOUCHER IF IT GETS PUBLISHED!



JACK BLAYDEN CAUGHT A 38CM BASS ON LIVE YABBIES AT GLENBAWN DAM

shelves it won't be long until a run out to the FAD's are well worth a shot for a Dollie or better still a sticky beak for an early season Marlin.

ESTUARIES

With the recent rain we have had just enough flush in the rivers and lakes to fire things up especially the school Jewfish, Flathead, Crabs and Prawns.

Some solid Kings are being caught along both Marina walls inside the bay, live baits and poppers and stick baits have been working well to outsmart these picky fish. Also a few solid snapper have been taken from the Little Beach jetty around the high tide, especially after a bit of sloppy weather.

BEACHES

With the rain and some dirty water, the beaches have also been fishing exceptionally well. This has fired up the start of the summer run of beach Whiting and Bream. The main stay has been the Jewfish along the beaches though with some crackers caught lately.

IMPOUNDMENTS

Not a lot to comment on from the impoundments other than if you want to catch a fish from the local dams, then now is the time to head out for a bit of fun, especially if you have been waiting for that surface and the reaction bite to fire up.

Keep floatin' - Thrifty's

Ute and Canopy Specialists
General-Custom Fabrication

TruckFit
P (02) 4932 8421
truckfit.com.au

95 Kyle St
Rutherford NSW 2320
info@truckfit.com.au

**STEEL TRAYS ALUMINIUM TRAYS/CANOPIES MINESPEC
GENERAL/CUSTOM FABRICATION STEEL SALES**

- BEST QUALITY BUILT BODIES AROUND
- CAN HANDLE BULK MINE SPEC ORDERS
- 100% LOCALLY BUILT IN THE HUNTER
- STANDARD & CUSTOM BUILDS TO SUIT ANY NEEDS

NSW DISTRIBUTOR FOR THE FAMOUS OSTRICH WING AWNING
NO POLES NEEDED, ONE PERSON CAN SET UP WITH EASE IN UNDER 1 MIN



ALFABS

0412 074 079

DELIVERING ONSITE BLASTING AND PAINTING SERVICES WITH SAFETY, QUALITY AND THE ENVIRONMENT AS PRIORITIES.

- Project management services
- In-house NACE certified Inspectors
- Mine site experienced blast and painters
- Scaffolding and encapsulation services
- Dustless blasting equipment

FOR YOUR NEXT PROJECT GIVE THE TEAM @ ALFABS SERVICES A TRY - WE WANT LET YOU DOWN.

ALFABS GROUP

HUNTER VALLEY

WOLLONGONG

MACKAY

www.alfabs.com.au



ASIAN OCCASION

GINGER MEGS IS A PAN-ASIAN STYLE EATERY IN NEWCASTLE BOASTING BOTH A RESTAURANT AND COCKTAIL BAR. IF YOU HAVEN'T CHECKED IT OUT, THEN YOU ARE MISSING OUT.

Before you even arrive at the restaurant, there's an air of mystery. That's because it's hidden away up an alley on King Street and unless you know where you're going you probably won't find it. I'll let you in on the secret though, it's next to the Foghorn Brewhouse. Even though this place is doing little in the way of advertising itself, it sure is popular. I went on a Wednesday night and every table was taken, not bad for a place that doesn't accept reservations except for big groups. The dim lighting and Asian inspired décor creates a contemporary and

sophisticated atmosphere and it manages an intimate feel even though the restaurant can seat 100 guests and the upstairs cocktail lounge another 150. **OUR TABLE OF THREE DECIDED TO EACH ORDER A STARTER AND SHARE. THE PROBLEM WITH THAT WAS THAT MY ROAST DUCK PANCAKES WITH HOI SIN, CUCUMBER AND SHALLOTS WERE SO BLOODY DELICIOUS I WANTED TO KEEP THEM ALL FOR MYSELF. ALTHOUGH THE OTHER ENTREES OF SALT & SICHUAN PEPPER SQUID AND STEAMED PORK AND BEEF DUMPLINGS WERE DELICIOUS, THEY COULDN'T TOP THE PANCAKES.**

I could have easily ordered another round of starters as there were still more I wanted to try but it was onto main course. For me it was kung pow chicken with dried chili, spring onion, Sichuan peppercorns and cashew nuts. Warning if you don't love pepper than give this one a miss because it whacks some pepper punch. Also ordered were the honey and palm sugar fried king prawns with sesame, spring onion & crispy noodle and a massaman curry of coconut braised beef, jackfruit, okra and peanuts. All the dishes were artfully prepared and packed full of flavour. Having a sweet tooth, dessert was the only let down. The only offering was chocolate spring rolls and unfortunately the chocolate tasted burnt and the pastry on the dry side. A selection of icecreams was also

available and being adventurous I tried the soy icecream and the rice icecream, both were not bad though I have no idea which was which. **FOR ME THE STAR OF THE NIGHT WAS THEIR FANTASTIC SELECTION OF HAND-CRAFTED COCKTAILS WITH ASIAN INSPIRED NAMES SUCH AS BANGKOK HILTON, LYCHEE DRAGON, CROUCHING TIGER. I WENT FOR THE BANG BANG CAPRIOSKA WHICH WAS DIVINE. CHILI INFUSED VODKA WITH FRESH LIME JUICE AND TOPPED WITH A PALM SUGAR COATED PINEAPPLE, IT WAS A DRINK AND A DESSERT ALL ROLLED INTO ONE.**

Overall the food was flavoursome and interesting, the service was great, and the atmosphere was spot on. I'll definitely be back soon to work my way through their cocktail list!





SUPPLY SOLUTIONS GROUP

Supply Solutions is the go-to supplier for industrial supplies in the Hunter Valley. We're here to make your working life just a little easier.





SUPPLY SOLUTIONS GROUP

0499 051 320

www.supplysolutionsgroup.com.au

We can help with:

- ✓ Mining Equipment
- ✓ Construction Equipment
- ✓ Auto Workshop Equipent
- ✓ Tools
- ✓ Vending Systems
- ✓ Workshop Supplies
- ✓ Storage
- ✓ Bolts and Fasteners
- ✓ Protective Clothing
- ✓ Cleaning and Hygiene Products

INNOVATION + PARTNERSHIP + PERFORMANCE

Contact Dee Carter Area Manager on 0417 124 263

www.supplysolutionsgroup.com.au



PIEMINISTER

NEVER HITCHHIKE DRUNK...

GETTING FROM A TO B AFTER YOU'VE HAD A FEW IS NEVER EASY. IT DOESN'T MATTER HOW MANY 'PLAN B'S' YOU HAVE UP YOUR SLEEVE, YOU CAN STILL GET INTO TROUBLE WITH THE LAW EVEN IF YOU AREN'T DRIVING.

The Gloucester Magpies are without doubt one of the finest country rugby league teams to ever lace on the boots. The Gloucester constabulary also have an equally fearsome but friendly reputation as I recently discovered by accident.

IN TERMS OF TRUE AWESOMENESS THOUGH, HEBBY'S BAKERY ARE THE FINEST OUTFIT IN TOWN.

How I came to discover this and how all the above fits together is an interesting story. You see recently, before the season finished, I thought

I'd head over Gloucester way to take in a bit of Magpie magic at the footy. Unfortunately, on that particular week the Kingswood was in at Hedgy's Smash Repairs getting fixed after getting into a scrape with an '84 Volvo station wagon driven by a pipe smoking hippie.

Anyway, after a few brekkie beers at the Clubby I decided to surprise one of my loyal subjects with the honour of driving my royal arse over Gloucester way and put the thumb out the front of the

pub to hitch a ride. Of course I grabbed a few travellers to stay hydrated on the drive – A carton of stubbies and an 8 pack of JD cans.

Anyway, my old mining explosives mate 'Bomber Brad' happened to be driving home to Gloucester after a week of blowing the black S%!T up in the Valley and excitedly pulled over to give me a ride. With my designated driver strapped into the chauffer's seat I cracked a beer and off we went. Forty minutes later we arrived in Gresford and with only one can of beer and half a can of JD left we sensibly pulled into Gresford's Beatty hotel to restock with another carton and a few more JD cans.

I don't remember much after that to be honest, except for a vague recollection of Brad turfing me out of his Hilux after I barfed in his car as we hit the mighty 'G'. Must have been something I ate. All I then recall is disco lights in shades of blue and red and woke up in a cosy B and B the next morning. The nice man who ran the B and B came into my room with breakfast soon after. And there it was... a breakfast platter of freshly baked Hebbys sausage rolls and old fashion crispy flakey pies with a good solid bum. Bloody lovely!

Unfortunately, I missed the Magpies winning game and the whole of Saturday for that matter due to sickness. Who would of thought the Gloucester watch house doubles as a B and B on weekends? The local constabulary runs a fine establishment. I even gave them a five star rating on trip advisor.

I'll be back! Cheers Sol

BEER O'CLOCK

WIN!

WIN A 6 PK OF TUATARA TOMAHAWK AMERICAN PALE ALE AS FEATURED IN THIS MONTH'S BEER REVIEW COMPLIMENTS OF THE CLUBHOUSE.

FOR YOUR CHANCE TO WIN, SIMPLY SMS: BEER'S ON US, YOUR NAME, AND YOUR EMAIL ADDRESS TO 0438 474 290.

Limit of one entry per person. LTPM/17/02507

Clubhouse
HOTEL
SINGLETON



BY SUBMITTING AN ENTRY, YOU CONSENT TO THE USE OF YOUR CONTACT DETAILS FOR PROMOTIONAL AND MARKETING PURPOSES.



BOWDLER'S BEER REVIEW

@ The Coalface beer expert

Richard Bowdler brings you this month's beer review.

TOMAHAWK AMERICAN PALE ALE by TUATARA BREWING

Made: Paraparaumu, New Zealand.

Info: Brewed with 5 different hops varieties and 4 different malts.

Cost: \$26 / 6Pak.

Alcohol: 5.6%.

Color: Deep Amber.

Nose: Very fruity hops, a quality beer smell.

Taste: Pleasant, a little fruity but nice to drink. Bulk character.

Mouth: Wow. A solid full-bodied ale. Exactly what an Indian Pale Ale should be.

Aftertaste: A bitter kick like a mule... this beer is hops central. Awesome!

Comments: A proper IPA, not like some of the trendy boutique pretend crap IPAs out there. Believe me, this stuff rocks. My new favorite IPA that packs a huge taste.

Score: 10/10 - Best IPA I've ever had

ProMine
Contracting Pty Ltd



02 6572 2931

1/4 Magpie St, Maison Dieu
email: admin@pro-mine.com.au

Fleet Maintenance Specialists

FULL MECHANICAL & AUTO ELECTRICAL SERVICES
SERVICING THE MINING & PUBLIC SECTOR
EXPERTS IN 4WD & LIGHT COMMERCIALS
SUSPENSION SUPPLY & FITMENT | REGO INSPECTIONS
AIR CONDITIONING | QUALITY PARTS PROCUREMENT



MEAT THE CREW - WITH KYLE PEMBERTON

BIGLIFT

FOR THIS MEAT THE CREW WE VISITED BIGLIFT IN MUSWELLBROOK WHERE THE NEW GM BILLIE SHARPE INTRODUCED ME TO SOME OF THE CREW; SCANDALOUS, HIGHNOON, GHOST RIDER AND WOLVERINE. OK, SO THAT'S NOT THE CREW, THAT'S THE FLEET.

We sat around the boardroom table eating egg and bacon rolls, drinking coffees and sharing stories. I really took a liking to Dave and he told plenty of funny stories, especially about the Cockatoos on Hamilton Island that steal your items from your room. I am not too keen to go there.

Billie then talked to them about

what the employee of the month should be graded on this month? Trent was awarded the previous month's for having all his paperwork in place when spot checked. Sarah the receptionist

suggested presentation and all the boys laughed, as it is a dirty job. But then they all agreed on safety for the month and do run extra spot checks on top of those they normally do.

It was a great morning with the team and I thank Billie, Dave, Sarah, Kate, Todd, Lindsay, Paul and Col for the opportunity. We had a fantastic time. I'm still voting for Lyndsay for employee of the month!

Thanks again to Biglift for having us there.
Kyle



Mining Tire Group

THE LEADERS IN MINING TYRE SERVICE, SUPPLY & REPAIR

Kal Tire Muswellbrook repairs all sizes of earthmover tyres and specialise in the complete range of tyre management services for mining and industry.

The facility has an extensive history and reputation for quality repairs within the Hunter Valley over the last 25 years.

The Muswellbrook repair facility has long term experienced and qualified tyre repairers who work and live in the Hunter Valley and is a locally based employer.

PH 02 6542 5281

28 STRATHMORE ROAD MUSWELLBROOK

e: Australia@kaltire.com www.kaltiremining.com



PUT YOUR FOOT INTO IT



WHY PLAY JUST ONE SPORT WHEN YOU CAN PLAY TWO AT ONCE? INTRODUCING FOOT GOLF, COMBINING GOLF AND SOCCER.

FootGolf is a new game that is taking off around Australia and the world. Played on a golf course, a football is kicked into a series of large holes, the object being to complete the course using the fewest possible shots.

It's a fun way to spend time with family and friends and is also becoming popular as an activity for corporate events, birthday parties and days out.

But for those who think sport is not about fun but about winning, there is also a competitive side. FootGolf Australia is the

governing body of the sport and has been around since 2013 and runs competitions throughout Australia. They've even had players participate in the FootGolf World Cup in Argentina and in the First Asia Cup in China.

If this sounds like a fun way to spend an afternoon, then head to Cessnock Golf Course. Only \$15 for adults and \$10 for children it's a lot cheaper than your normal game of golf and then you'll have more money to spend at the 19th hole!

www.cessnockgolfclub.com
www.footgolf.org.au

LAWN PORN

THE HOT SUMMER MONTHS ARE ABOUT TO HIT US AND WITH A LITTLE HELP FROM OUR FRIENDS AT SINGLETON OUTDOORS WE HAVE SOME TIPS TO KEEP YOUR LAWN NICE AND GREEN WITH MINIMAL EFFORT.

If you haven't started your lawn reno it's not too late as it only takes a few weeks to see some huge results. You don't need to spend hours of work or thousands of dollars either!

FIVE EASY STEPS TO A GOOD LAWN

DETHATCHING – Remove the dead grass from your lawn (known as thatch).

Use a heavy-duty rake for small lawns or hire a dethatching machine for big

lawns. Mow after on your lowest setting and give a good watering.

AERATE YOUR LAWN –

Use a small pitch fork or an aerating unit. This allows air, water and nutrients to penetrate the roots. After you aerate give your lawn a good mow and water.

FERTILISING YOUR LAWN –

Fertilising will build the strength of your lawn and stop the weeds from coming through. Slow release fertiliser is best and make sure you

water in well straight after and continue to do so for 3-4 days.

WEEDS – Weed and feed works well for overall lawn. For individual spot treatment mix up some Bindi. Tip – put a small amount of dish washing detergent in with your mix this will help it stick to your weeds. Wait 3 or 4 days and then mow.

MOWING & WATERING

– Regular mowing and watering will keep your lawn in good health. You don't have to leave the sprinkler on all day, just 20mins when the sun's going down is the optimal time. Keep your mower blades in good condition, don't cut in the heat of the day and water after as this puts moisture into the cut tips.



If you have any further question on anything lawn related pop in and see the guys at Singleton Outdoors.



TW Power Services (TWPS) is a leading provider of integrated asset management, operations and maintenance services to the power and energy industry. We work with our customers to achieve their goals by using best-practice systems and processes backed by technically skilled people to deliver project management, outage management, sustaining capital works, operations, and maintenance services. Our business is growing and we are seeking to add highly skilled and motivated people to our teams.



Due to contract success, TWPS seeks applications for roles based at Bayswater & Liddell Power Stations.

KEY ROLES WE'RE CURRENTLY RECRUITING:

- › Industrial Chemist/Process Engineer
- › Operations Supervisors
- › Maintenance Supervisors
- › Boilermakers
- › Electricians
- › Mechanical Fitters
- › Operators (Ash & Water Treatment plants)
- › Pressure Welders
- › Riggers
- › Scaffolders
- › Trades Assistants

Successful TWPS employees showcase:

- › Commitment to ZeroHarm; to people, the environment and the plant
- › Experience in an operational environment within heavy industry
- › A high performance attitude
- › The ability to positively influence team members
- › A continuous improvement culture that promotes creative ideas and suggestions

Our vision is to be the leading operator and asset services provider to the power sector. We achieve this through our values of ZeroHarm, Commitment, Excellence, Collaboration and Innovation.

Pre-employment checks form part of the recruitment process for TW Power Services, including a pre-employment medical with drug and alcohol screening.

To register your interest or see what other opportunities TWPS has available, please visit www.twps.com.au/workwithus for further information.



TW POWER SERVICES IS AN EQUAL OPPORTUNITY EMPLOYER THAT PROMOTES AN OPEN AND INCLUSIVE CULTURE.

DOG BREEDS
WORD SEARCH

| | | |
|---------------|--------------|--------------|
| AFFENPINSCHER | DOBERMAN | MALTIPOO |
| AKITA | GOLDADOR | MUDI |
| AZAWAKH | GOLDENDOODLE | MUTT |
| BASENJI | GREYHOUND | NEWFOUNDLAND |
| CHIHUAHUA | HAVANESE | OTTERHOUND |
| CHINOOK | KEESHOND | PEEKAPOO |
| COCKAPOO | KOMONDOR | PULI |
| DACHSHUND | KUVASZ | SALUKI |
| DALMATIAN | LEONBERGER | SLOUGHI |

| | | | | | | | | | | | | | | |
|---|---|---|---|---|---|---|---|---|---|---|---|---|---|---|
| O | O | P | A | K | E | E | P | A | Z | A | W | A | K | H |
| A | I | O | A | N | G | B | A | S | E | N | J | I | O | O |
| K | P | T | M | O | O | P | A | K | C | O | C | A | O | J |
| I | U | T | Z | U | L | D | A | C | H | S | H | U | N | D |
| T | Z | E | R | O | D | N | O | M | O | K | L | E | I | A |
| A | D | R | M | Z | E | I | F | B | L | T | W | K | H | L |
| R | E | H | C | S | N | I | P | N | E | F | F | A | C | M |
| I | R | O | D | A | D | L | O | G | O | R | D | U | E | A |
| H | A | U | N | V | O | U | W | U | N | W | M | H | S | T |
| G | T | N | S | U | O | P | N | H | B | W | S | A | E | I |
| U | F | D | Z | K | D | D | O | Y | E | J | A | U | N | A |
| O | O | P | I | T | L | A | M | R | R | O | L | H | A | N |
| L | G | B | T | A | E | D | X | E | G | I | U | I | V | I |
| S | O | U | N | D | N | O | H | S | E | E | K | H | A | R |
| S | M | D | N | U | O | H | Y | E | R | G | I | C | H | S |

@ THE COALFACE PRIZE WINNERS

VOLUME 3 – NO 1: OCTOBER - NOVEMBER 2018

| | |
|---|---------------------------------|
| Components Only Excavator – Tony Bendeich | Rodney Doyle, Warrick Coles |
| Roberts Meats Raffle – Stuart Scales | Clubhouse XXXX – David Bird |
| Oliver Boots – Marc Andrews | Café La Luna Cake – Jane Ridout |
| Nikwax Wash-In – Andrew Porters, | Beer’s On Us – Warrick Cole |

CONGRATULATIONS TO ALL OUR WINNERS!

WINNERS!

@ THE COALFACE TRIVIA
THIS MONTH: AUSSIE BEER

- Q1: What is the most popular tap beer in Australia?
Q2: Where is the oldest still-brewing brewery in Australia?
Q3: What was the first beer produced by SA brewer, Thomas Cooper’s wife in the 1860’s?
Q4: What do most Aussies know a ten ounce (285ml) glass as?
Q5: What category best describes the West Australian ‘Brass Monkey’?
Q6: In what year was the tinnie launched in Australia?
Q7: Which company is the only major wholly Australian owned brewery?

Q8: How many mls are in a schooner?



| | | |
|---------------------|-----------|------------|
| A6: 1958 | A3: Stout | A2: Hobart |
| A7: Coopers Brewery | A4: A Pot | A1: VB |
| A8: 425 mls | A5: Stout | ANSWERS |

PROGRAMMED INDUSTRIAL MAINTENANCE

We provide a variety of services to heavy industries – from ports to manufacturing facilities, mines, smelters, refineries, washeries and power plants.

Our maintenance solutions range from supplementary maintenance crews, through to fully outsourced maintenance models. We allow our customers to optimise production and focus focus on their core business by providing:

- General maintenance and fixed plant works
- 24-hour callout and breakdown coverage
- Campaign and shutdown or turnaround maintenance
- Programmed services include:
 - Industrial maintenance
 - Facility management
- Shutdown management
- Scaffolding services
- Workshop services
- Asset integrity projects
- Capital works projects
- Painting and blasting
- Recruitment and labour hire

WE'RE HIRING

- Workshop, CHPP & Field Service Boilermakers, Fitters and Diesel Fitters
- Progressive career development
- Competitive pay rates
- A company committed to your safety

Call TODAY to speak with our Recruitment Coordinator Ben on 0438 190 445 or email hmrecruitment@programmed.com.au

We encourage applications from men and women of all ages, including people with disability and Indigenous Australians.



PROGRAMMED

PH 6510 3900
programmed.com.au

Programmed Industrial Maintenance has more than 50 years’ experience successfully delivering maintenance, major shutdown, outage solutions, including base and peak load, unplanned and emergency maintenance services for production-critical mine assets and infrastructure, as well as for brownfield, sustaining capital projects.

GET WET

WITH THE WEATHER WARMING UP THIS MONTH WE DECIDED TO SHARE WITH YOU OUR FAVOURITE WATERING HOLES.



LADIES WELL

If you haven't been to this location on the beautiful Allyn River, "that ain't living Barry". Surrounded by granite boulders and lush forest in the beautiful Barrington Tops, the picturesque water hole features activities for the wader or the adventurer.

WATTAMOLLA
This popular family destination has the option of a calm lagoon on one side and a beautiful beach on the other. The lagoon is ideal for families and young children to swim in, whilst the beach is great for those a bit older or for the avid fisherman to drop a line in. Accessible by car and whilst it's a bit of a drive, you'll enjoy it even more after spending time in a hot car with the kids.



THE BRIDGE AT GLENBAWN DAM

Anywhere at Lake Glenbawn is simply breathtaking, though if you are after a pure refreshing dip, I highly recommend the water near the bridge at the gate entry to Glenbawn. The water there is so chilled that it's even been known to cure hangovers.



THE BOGEY HOLE AT NEWCASTLE

If you live in our region and haven't experienced the Bogey Hole in Newcastle, give yourself an upper cut! This heritage listed sea-bath is 1.5 metres deep and is the perfect spot to cool off while overlooking the beautiful views of the ocean.



THE JETTY AT SHOAL BAY

If you want to create memories with the kids this summer that will be forever etched their minds, then this is the place. Kids have been jumping from this jetty for generations into the calm water that's perfect for swimming.



KARLOO POOLS

An Oasis in the bush! This natural swimming hole is sublime and only a short walk east of Heathcote Train Station. There's also easy carparking at Bottle Forest Trail. Perfect for the picnic lunch and a swim in the pristine and crystal-clear water. Send me there now!



DK HEAVY PLANT SERVICES

PH 0408 551 966 admin@dkheavyplantservices.com

SPECIALISING IN OFFSITE HEAVY MINE MACHINERY REPAIRS AND FABRICATION. REPAIRING LARGE COMPONENTS IN A WELL-EQUIPPED FACILITY.

Servicing heavy earth moving machinery including dozers, diggers, trucks, excavators, drills and draglines.

- Welding and fabrication services
- Breakdown field service
- Component overhauls
- Rebuilds



WE SOURCE AND SELL COMPONENTS GLOBALLY TO KEEP YOU MOVING

BUCKET CYLINDER FOR ROTABLE
STOCK, EX WA

BOOM, EX MINE SITE IN SOUTH AMERICA

REFURBISHED CABIN, EX WA

NEW AC WHEEL MOTOR, EX USA

REBUILT RADIATOR, EX CENTRAL QLD

**COMPONENTS
ONLY**

1300 726 801
WWW.COMPONENTSONLY.COM