



CHARITY RUGBY LEAGUE MINING KNOCKOUT OCT 7 - BE THERE!

FREE

@THE COAL FACE

Vol 2 No 1: September - October 2017



WHAT A SEASON FOR BHP AND THE TIGERS!
THANKS TO MAJOR SPONSORS BHP BILLITON THIS YEAR'S GROUP 21 RUGBY LEAGUE SEASON WAS A SMASH. **PAGE 31**



CONGRATULATIONS!
MEET THE WINNERS OF 2017 NSW MINERALS COUNCIL HEALTH, SAFETY, ENVIRONMENT AND COMMUNITY AWARDS. **PAGE 14-15**



WORKERS UNITE
UNION MEMBERS GATHERED AGAIN AT SINGLETON SHOWGROUND IN THE ONGOING INDUSTRIAL ACTION. **PAGE 7**

mrs GROUP

THE MRS GROUP IS **AUSTRALIAN BASED** AND GLOBALLY ACTIVE

SUPPLYING TECHNICAL AND STRATEGIC SERVICES IN THE MINING, OIL & GAS, CONSTRUCTION AND RESOURCES INDUSTRIES

MRS GROUP IS PROUD TO ANNOUNCE ITS EXPANDED CAPABILITIES IN THE HUNTER VALLEY.

MRS GROUP IS THE COMBINED STRENGTH AND CAPABILITIES OF:

PROJECT MANAGEMENT | LABOUR HIRE | MAINTENANCE | PLANT HIRE

www.mrsplc.net
1300 781 960



ENGINEERED FOR SUCCESS

Leading undercarriage solutions and components

Whether our customers need components or complete undercarriage solutions, our Hunter Valley team are on hand to provide a full range of services and technical support to meet every requirement.

ITM is a global leader in the design, manufacture and distribution of undercarriage components and complete undercarriage solutions. We have the experience and know-how to meet all our customers' needs: whether they require assistance during the design stage or application in the field, service or technical support, our experts are always on hand to help our customers to develop new solutions and deliver innovation.

Contact: Paul Jones 0499 976 150

PH (02) 6541 3207
26 Strathmore Rd Muswellbrook NSW



Titan ITM is active in major mining centres worldwide

ITM TrackAdvice INTELLIGENT TRACK MAINTENANCE

ITM TrackAdvice analyses all the data generated during inspection and forwards the results to our experts who are always on hand to give the best advice and assistance: specialized staff, available 24 hours a day, 365 days a year. They, in turn, provide the necessary suggestions to ensure maximum productivity, greater durability and lower maintenance costs.



MEASUREMENT IN THE FIELD WITH THE ULTRASONIC TOOL.



QUICK AND ACCURATE COLLECTION OF UNDERCARRIAGE INSPECTION DATA.



DATA AUTOMATICALLY TRANSFERRED TO CENTRALISED DATABASE FOR REPORT GENERATION.



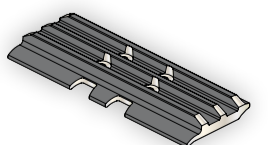
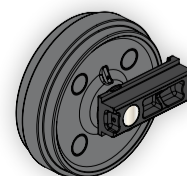
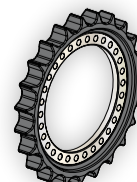
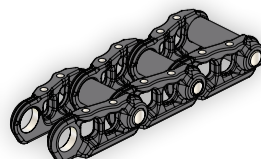
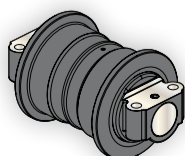
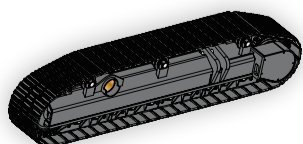
BLUETOOTH



APP



CLOUD SERVICE



w w w . g r o u p - i t m . c o m



ROUND 2: IT'S ON!

WOW, IT'S HARD TO BELIEVE THAT @ THE COALFACE IS ALREADY HEADING INTO OUR SECOND YEAR BACK. AND IT'S GOING TO BE A GREAT YEAR!

We took some time after the final edition of Vol 1 to think of ways to improve the magazine, but without losing any of the stuff you love. We thank you all for your feedback, both the good and the bad, as it helps us make sure we keep heading in the right direction.

Over the coming months look out for some new changes. This month we've changed up our driving page, it's no longer a boring review of a car that most of us will probably never get a

chance to drive, let alone own. Instead, we will bring you stories such as what's happening on the motor circuit, or where the best on-road and off-road spots are to take your car or bike.

New this month is My Mining Life. Each month we will tell someone's story about how they got into the industry and what they love (and hate) about it. Maybe next month it could be your story!

Community will continue to play a big part of who we are and we will do our best to share

the stories of the people and businesses who contribute so selflessly. Our community gift will still go out to a worthy recipient every month, if you think this should be you or someone you know drop us a line.

Featured this month are the winners of the HSEC conference. These projects and programs taking place in our industry deserve to be recognised and we congratulate both the winners and the nominees. We can't wait to see what's in store this year.

SAFETY FIRST

AROUND 600 MINERS FROM ACROSS NSW RECENTLY GATHERED HERE IN THE HUNTER FOR THE ANNUAL NSW MINERALS COUNCIL HEALTH, SAFETY, ENVIRONMENT AND COMMUNITY (HSEC) CONFERENCE.

This important event is primarily a working conference that brings together operational mining personnel from across the state to discuss crucial health and safety challenges including managing fatigue, tackling the challenges of obesity and new strategies for dealing with depression.

Our industry's strong partnership with the Newcastle Knights was a focus of the event, with Knights Coach Nathan Brown delivering an inspiring and entertaining presentation on leadership.

An important part of conference is our annual awards. Two of the awards are focused on health and safety in the workplace and the winner of this year's Health Excellence award went to the Hunter's own NCIG for their 'Bounce' program.

In 2012 NCIG introduced a Program called 'Bounce' to improve the health of workers, contractors and their families. The results have been fantastic with many of those involved losing weight and getting better health outcomes.

NEW RESEARCH WAS ALSO RELEASED AT THE HSEC CONFERENCE SHOWING OUR INDUSTRY HAS STRONG SUPPORT FROM THE LOCAL COMMUNITY.

A survey of over 2,000 people across the Upper Hunter region found support for the local mining industry at 62 percent, slightly higher than a similar poll completed three years ago.

Nearly 80 percent of those surveyed also agreed that mining is important for the future of the Hunter economy.



Stephen Galilee
CEO, NSW Minerals Council

This strong support for our industry is around the same level as a similar poll taken three years ago. Those working in our sector should be encouraged to know that most people still understand the importance mining to the Hunter and support our miners and their families.

We'll continue running our HSEC conference because it focuses on how we can continue to improve our performance, our safety, and our impact on the environment and local communities.



Publisher
Shane Davey
shane@thecoalface.net.au
0408 759 088

Editor
Rebecca Connolly
rebecca@thecoalface.net.au
0408 769 699

Editorial Contributor
Daniel James

Design
Catch Creative

@ The Coalface
14B/169 John Street
Singleton NSW 2330
www.thecoalface.net.au
02 6571 2136

MORGAN ENGINEERING

PH 02 6572 2032

morganengineering.com.au
159 MAISON DIEU ROAD SINGLETON

EXPERIENCE • QUALITY • RELIABILITY

GENERAL ENGINEERING CNC MACHINING MOBILE LINE BORING SOLUTIONS
WELD RECLAMATION LIQUID NITROGEN SERVICE & SUPPLY CATERPILLAR SERVICE
EXCHANGE COMPONENTS LIGHT FABRICATION



THE HON. DON HARWIN,
MINISTER FOR RESOURCES



A BLACK AND GREEN FUTURE

BACK IN JUNE IN MY COALFACE COLUMN I BRIEFLY TALKED ABOUT THE COAL INNOVATION NSW FUND AND THE FINANCIAL SUPPORT IT HAD PROVIDED FOR INNOVATIVE RESEARCH AT THE UNIVERSITY OF NEWCASTLE TO REDUCE EMISSIONS FROM THE USE OF COAL – NOW I’M PLEASED TO UPDATE YOU ON THEIR PROGRESS.

I attended the unveiling of Mineral Carbonation International’s pilot plant project at the University’s Newcastle Institute for

Energy and Resources (NIER) late last month and the storage technology they have developed presents the possibility of creating

something very big and very exciting. We all know the work industry is doing to realise a carbon neutral future but

what you might not know is that at the NIER they are creating an alternative storage for CO2 emissions, one which could create green building products such as bricks and cement. This world-first pilot plant will serve the dual purposes of permanently capturing and storing CO2 emissions from coal fired power stations and creating useful building products.

INVESTING IN TECHNOLOGY THAT COULD USE CO2 EMISSIONS AS A RESOURCE AND TRANSFORM THEM INTO GREEN BUILDING PRODUCTS IS ONE WELL WORTH MAKING AND THE GOVERNMENT IS DELIGHTED TO SUPPORT.

The NSW Government established Coal Innovation NSW in 2008 to promote and develop innovation in low emissions coal technologies.

The Government has utilised the Coal Innovation NSW fund to conduct and support research to develop technologies to reduce emissions from both the extraction of and use of coal.

Coal Innovation NSW

Fund has invested over \$17 million in two rounds for research into low emission coal technologies, which has leveraged similar investments from industry and universities. More than \$7 million has been invested across six innovative projects at Newcastle University alone. The Fund’s competitive grants processes have allowed the Government to work closely with leading universities, CSIRO and industry on research programs examining fugitive emissions, combustion efficiency, and CO2 capture and storage technologies.

In the latest Coal Innovation NSW Fund round of research funding, awarded earlier this year, the University has again been successful in securing support for a further two research and development projects related to energy storage and development of a direct carbon fuel cell. This all reflects well on the calibre of research being undertaken at the University of Newcastle and bodes well for the future of our industry and the environment.



PH 02 4946 6005

QLD Office
25-29 Interlink Court Mackay 4740

Head Office

Level 3, 414 Hunter Street Newcastle 2300

WA Office

4 Bellows Street Welshpool 6106

Alliance Labour Solutions have experienced trades and TAs located in Newcastle and the Hunter Valley and available now!

Our experienced team can facilitate the on-board process from:

- Database search
- Advertising
- Engaging suitable candidate – skills and qualifications
- Pre-employment checks – reference, background, police
- Medical and induction management
- Placement

Competitive permanent placement service rolled out July 1 - **Enquire today!**

Call now on 02 4946 6005 and talk to our friendly staff about your recruitment needs today! We can be sure to tailor a service that is suitable to your business.



w w w . a l l i a n c e l a b o u r . c o m . a u

NEWCASTLE
53 Rural Drive
Sandgate, 2304
Ph 02 4967 4622

Hunter Liftrucks

CENTRAL COAST
6 Yandina Rd
West Gosford, 2250
Ph 02 4322 6220

YOUR FORKLIFT SPECIALIST

LOCALLY OWNED AND OPERATED FOR 35 YEARS

NEW AND USED SALES • HIRE • PARTS • SERVICE



www.hunterlift.com.au



MANUFACTURER OF MATERIAL HANDLING EQUIPMENT FOR OVER 140 YEARS

DUSTED

THE NSW ENVIRONMENT PROTECTION AUTHORITY'S (EPA) DUST STOP REDUCTION PROGRAM HAS CUT DOWN DUST EMISSIONS BY 22,000 TONNES A YEAR, A WHOPPING 19 PERCENT.

The program commenced in 2012 and required all NSW open cut coal mines to implement best practice measures to reduce dust emissions. One of the measures was achieving 80 percent control of wheel generated dust on haul roads which is the largest source of fine dust particles for most mine sites.

EPA Chief Environmental Regulator Mark Gifford said the program has been a huge success, recording a steady decline in coal dust from mines since it began. "The management practices

developed during Dust Stop are now part of standard operations of each mine but more work is still to be done to reduce dust." Mr Gifford said.

The EPA in partnership with the Office of Environment and Heritage is about to trial a dust risk forecasting system in the Upper Hunter. This system could be used to provide early warning to allow mines to reduce particle emissions even more on days when high dust risk is forecast.

Another positive outcome for our industry.

LOXFORD FABRICATIONS

REPUTATION KNOWLEDGE QUALITY SERVICE
INNOVATION & INTEGRITY

SPECIALIST PIPE, FITTINGS AND MANIFOLD MANUFACTURING
AND SUPPLY TO THE MINING INDUSTRY SINCE 1974.

OFFICE: 02 4936 1320

FAX: 02 4937 5505

e-mail: loxfabs@bigpond.net.au
Web: www.loxfordfabrications.com.au

ESTABLISHED SINCE 1974



SHOW US THE MONEY

THE NSW GOVERNMENT HAS ANNOUNCED THE REGIONAL GROWTH FUND WHICH WILL INVEST \$1.3 BILLION IN REGIONAL INFRASTRUCTURE.

The Regional Growth Fund will invest in projects that support growing regional centres, activate local economies and improve services in communities through six funds.

These funds aim to enable essential infrastructure, support arts and culture, enhance and build sporting infrastructure, improve regional voice and data connectivity, invest in our mining-impacted communities, spur job creation and deliver local infrastructure.

Combined with the \$300 million to drive regional tourism through the Regional Growth:

Environment and Tourism Fund this brings the funding available for regional growth to \$1.6 billion.

Premier Gladys Berejiklian said this once in a lifetime funding will ensure the investment in roads, hospitals, schools, sporting and cultural facilities that every community needs.

"The NSW Government will make sure each community grows and creates an even better quality of life for its citizens. We will work closely with community organisations, industry and business to direct these investments where they are needed most."

Lets hope a good chunk lands here in The Hunter! We would love to hear your thoughts on how the money could be spent locally.



CUSTOMISED FLEXIBLE SITE SPECIFIC TRAINING FOR MINING AND CIVIL INDUSTRIES

COURSES DELIVERED ON OR OFF SITE TO CLIENT REQUIREMENTS

VOC'S AND STATEMENTS OF ATTAINMENT FOR ALL PLANT AND HIGH RISK TRAINING

35 YEARS EXPERIENCE + ALL COURSES NATIONALLY ACCREDITED

HPOTS training

high risk & plant operator training school

1800 640 580

www.hpots.com.au

CFMEU UNION LEADERS PASSIONATELY RALLYING MEMBERS AND MAKING THE POINTS HEARD LOUD AND CLEAR IN SINGLETON



WORKERS UNITED

THE CFMEU SHOWED NO SIGN OF BACKING DOWN IN ITS FIGHT WITH GLENCORE AT ANOTHER EMOTION FILLED MEETING ATTENDED BY A HUGE NUMBER OF UNION MEMBERS IN SINGLETON.

In a dispute that does not look like getting resolved anytime soon, over 1400 Glencore miners met and voted to continue their industrial action against the company. The turnout at the meeting was a strong display of the emotion, commitment, strength and solidarity of CFMEU members. The striking workers are calling on Glencore to resolve their concerns over secure permanent jobs, fair and equal terms and conditions for contractors, and fair redundancy pay.

FAIR REDUNDANCY PAY IS NOT JUST AN ISSUE CFMEU IS FIGHTING HERE IN THE HUNTER, BUT ALSO ON A NATIONAL LEVEL.

They are preparing to launch a fresh campaign to change the rules on redundancy pay after the Fair Work Commission's decision to cap redundancy pay at 15 years of service in the mining sector was upheld on judicial review.

CFMEU Mining and Energy Division President Tony Maher said, "This decision tells you everything you need to know about our industrial relations laws – the rules are broken."

Up until now, coal employees' redundancy pay has been calculated at two weeks pay for every year of service if they are retrenched. Now, once an employee reaches 15 years of service, they can no longer accumulate any further redundancy benefits.

For employees with more than 15 years employment they can no longer accumulate additional redundancy pay – an outcome Tony Maher described as "disgusting".

"The answer is simple: we need to re-write the rules and bring back fairness to Australian workplaces. The CFMEU will resource a campaign to reverse today's outcome and protect older workers hard earned redundancy pay." Mr Maher said.

Tony Maher (CFMEU National President), Dave Noonan (CFMEU C&G National Secretary) and Paddy Crumlin (MUA National Secretary) addressed the meeting in a show of support and passed resolutions that the Union will not back down and continue to fight for:

- Secure Permanent Jobs
- Equal Terms & Conditions for Contractors
- Fair Redundancy Pay

m
ine

Our
heritage
is mining

For the past 75 years, we've been looking after the retirement outcomes of miners and their families.

We offer:

- + Super and pension tailored to your goals
- + Insurance solutions specific for miners
- + Peace of mind through financial education
- + Service teams in regional mining communities

We can also put you in touch with Mine Wealth + Wellbeing Financial Advice to help you get the most out of your money.

Call us on **13 MINE (13 64 63)** to find out more.

GET CATTY!

IF YOU LOVE ALL THINGS CAT THEN YOU WILL LOVE THIS SET OF CAT COLLECTABLES WE HAVE PUT TOGETHER.

Including a CAT 272C Skid Loader diecast, CAT sunshade and CAT keyring.

For your chance to win, simply SMS: CATSTUFF and your email address to 0438 474 290.

Limit of one entry per person.
LTPM/16/01100



WIN!

Mine Wealth + Wellbeing

13 MINE (13 64 63) | help@mine.com.au | mine.com.au

Issued by AUSCOAL Superannuation Pty Ltd ABN 70 003 566 989 AFSL 246 864 Trustee for Mine Wealth and Wellbeing Superannuation Fund ABN 16 457 520 308. Advice is provided by Mine Wealth and Wellbeing Services Pty Ltd ABN 49 051 315 014 a Corporate Authorised Representative of Adviser Network Pty Ltd ABN 25 056 310 699 AFSL 232729.



NSW MINERS. WE CAN ALL BE PROUD OF THE WORK THEY'RE DOING.

Congratulations to the winners of the 2017 NSW Mining Health, Safety, Environment and Community awards.

Health Excellence Category

NCIG Bounce Program
Newcastle Coal Infrastructure Group



Environment Excellence Category

NCIG Offset Delivery
Newcastle Coal Infrastructure Group



Safety Excellence Category

Project Arrive Alive
Evolution Mining, Cowal Gold Operations



Community Excellence Category

Enterprise Facilitation
Rio Tinto Coal & Allied



Health category
Sponsored by Seyfarth Shaw

Environment category
Sponsored by Evolution Mining

Safety category
Sponsored by Bengalla Mining Company

Community category
Sponsored by Peabody Energy Australia

Find out more about these great examples of leading practice and innovation in our mining industry on our website or on facebook - just search NSW Mining.

nswmining.com.au

FUNDING THE FUTURE

THE COAL21 FUND HAS ANNOUNCED \$255 MILLION IN FUNDING FOR A RANGE OF PROJECTS OVER THE NEXT 10-YEAR PERIOD FOCUSING ON LOW EMISSIONS COAL TECHNOLOGIES.

These ongoing and new initiatives will be targeted at building confidence in carbon capture & storage (CCS) technology and demonstrating CO2 storage capacity within Australia. In addition, they have a specific work program to consider options for the uptake of

High Efficiency Low Emission (HELE) coal fired generation in Australia.

Since the Fund's inception in 2006 it has invested over \$300 million in a range of significant projects and have leveraged a further \$550 million from other sources including from the Commonwealth Government, State Governments and industry.

Chairman of the COAL21 Fund and Director of Centennial Coal, David Moulton said, "I am pleased to see that the work of the Fund is helping to secure the future value of Australia's

black coal resources. It is also building wider support for the country's second largest export industry through its commitment to a low emissions pathway."

"The next 10 years offers

many opportunities to build on our achievements and to further solidify the place of coal in Australia as both a strategic export and underpinning domestic energy supply."



COAL21 FUND CHAIRMAN DAVID MOULTON



SHIPPING WARS

THE FEDERAL COURT HAS RULED IN FAVOUR OF GLENCORE IN A THREE-YEAR DISPUTE OVER PRICING.

In 2014 the NSW government sold the Port of Newcastle to a private joint venture owned by the Hastings Fund and China Merchants and over the next two years shipping channel fees rose by more than 60 percent without any changes to the services.

As the port's biggest customer, Glencore sought to have the service declared so that the Australian Competition and Consumer Commission could be introduced as the arbiter of any future disputes.

Glencore lost its appeal to the National Competition Council in

2015 to "declare" access to Port of Newcastle shipping channels but in 2016 they successfully appealed to the Australian Competition Tribunal and the Federal Court has now upheld that decision.

The terms of the lease gave the Port of Newcastle the express entitlement to exclude access to the port's shipping channels if shipping charges were not paid, with no structure in place to "manage" the prices set by the monopoly owner. The ACCC will now be able to intervene in pricing disputes between the Port of Newcastle and mining interests.

THRE3DP
COM.AU



Do you need **good quality filament** for your 3D printer?

-  High quality filament for professional results
-  Bulk orders at great prices
-  Tested in our printer first, to ensure it is suitable for you
-  Stocks held in Newcastle, Australia

Order your filament today:

☎ 02 4966 5028 ✉ enquiries@thre3dp.com.au

www.thre3dp.com.au



PH 02 6542 5196

2 STRATHMORE RD MUSWELLBROOK

www.crjmaintenance.com

COMMERCIAL FLEET SPECIALISTS

- FLEET MANAGEMENT
- FLEET MAINTENANCE, SERVICE & REPAIRS
- TRUCK, PLANT AND EQUIPMENT SERVICE & REPAIR
- VEHICLE SET-UPS
- COMPLIANCE
- GPS TRACKING INSTALLATION & SERVICE
- 4X4 & OFF-ROAD SPECIALIST
- AUTO-ELECTRICAL & TYRES

YOUR ONE STOP FLEET MAINTENANCE SHOP





A YEAR IS A LONG TIME

WHEN I LAUNCHED THIS MAGAZINE FOR THE SECOND TIME AROUND, I MUST ADMIT I WAS NERVOUS. BUT THANKS TO THE SUPPORT OF OUR INDUSTRY AND OUR COMMUNITY, @ THE COALFACE IS FIRMLY BACK WHERE IT BELONGS.

When the original Coalface magazine came to an end, despite dipping my hand into a few other ventures I never quite managed to get it out of my system. That original vision and passion for our industry and community just wouldn't let go.

At the time, all you read about in the news was that the coal industry was dead, but I never believed it for a second. The people, the communities and the businesses that are a part of the coal industry are resilient and their story was far from over.

Before long I started plotting a new version with a slightly different name - @ The Coalface. A few of the right people agreed, and it turns out the timing was perfect as the industry turnaround kicked in as we kicked off.

As we launched coal prices surged and the industry and community as one took a collective sigh of relief that the punishing last few years were about to give everyone a bit of a break. But it wasn't all good news.

THE YEAR SAW DRAYTON FINALLY COME TO A DISAPPOINTING END, ELECTRICITY PRICES SURGED AND ENERGY RELIABILITY CAME OUT TO SHOW THE TRUE IMPORTANCE OF CLEAN COAL AND THE POTENTIAL OF HELE POWER STATIONS.

But overall, it's been a year filled with more good news than bad and the feeling in our industry is one of optimism for the future. Right up there on the lists of positives for us has been the turnaround in fortunes for many of our suppliers. Many thought

they might not make it but their tenacity and commitment has done them proud.

It has been our great privilege to give close to \$10,000 to charity and more importantly, help raise awareness to all the worthy causes we've featured. We've also been delighted to give out tons of prizes to our loyal readers.

It's been a big year and we expect the next year will be even bigger! We hope you will be by our side for every step of the way. Thanks for the support.

HAPPY BIRTHDAY
 @ THE COALFACE IS CELEBRATING OUR SECOND YEAR BACK WHICH MEANS...
CAKE! CAKE! CAKE!

We want you to help us celebrate so four lucky readers will win a \$25 gift card to purchase their own delicious cake from the Cheesecake Shop.

For your chance to win, simply SMS: CAKE and your email address to 0438 474 290.

Limit of one entry per person.
 LTPM/16/01100

RAMBOR

PPK GROUP LIMITED

Mount Thorley PPK Firefly 02 6574 6500
 Port Kembla PPK ME 02 4207 3000
 Tomago PPK ME 02 4964 5400
ppkgroup.com.au

Leading Australian OEM and Service Provider of Pneumatic and Hydraulic Drilling, Grouting, Pumping, Roof Support, and Ventilation Products.

- Rambor Drilling and Boring Products
- Rambor Grouting and Pumping Products
- Roof Support Products
- Ventilation Products
- Pneumatic and Hydraulic Motors

AUSTRALIAN MADE



TITAN HIGH RISK TRAINING

Titan High Risk Training is a brand new training facility based in Thornton NSW, and are partnered with HaloNT RTO 32485.

Our staff and trainers have over 50 years combined experience within the crane hire, mining and construction industries.

With this experience our qualified trainers and assessors are able to pass on relevant knowledge and skills to ensure every trainee at Titan High Risk Training is adequately trained to perform high risk work competently and safely.

Our trainers are dedicated and passionate about providing trainees with the highest quality and compliant training in a professional and safe learning environment.



WE OFFER THE FOLLOWING COURSES:

- C6 CRANE LICENCE
- DOGGING LICENCE
- FORKLIFT LICENCE
- EWP LICENCE
- WORK SAFELY AT HEIGHTS
- ENTER & WORK IN A CONFINED SPACE
- MDG25
- FIRE AWARENESS
- MANUAL HANDLING
- CONDUCT LOCAL RISK CONTROL
- S1 S2 S3
- CERT IV WHS

BOOK ONLINE @ titanhrt.com.au

Or email: bookings@titanhrt.com.au phone: 02 4966 2551 address: 25D Sandringham Ave Thornton NSW 2322



TITAN TECHNICIANS ENTERPRISE

Titan Technicians are your industry leading labour hire experts in the hunter valley for the past 6 six years.

Currently seeking new employees for all of the below-mentioned job title's for immediate start...

- FITTERS
- ELECTRICIANS
- SERVICEMEN
- TRADES ASSISTANTS
- FIRE WATCHERS
- SUPERVISORS
- PLANNERS

TITAN TECHNICIANS CONTINUALLY PROVIDE ONGOING TRAINING TO IMPROVE EMPLOYEE SKILL SETS

Email: labour@titantech.com.au phone: 02 4966 2551 address: 25D Sandringham Ave Thornton NSW 2322

CROSSROADS

A PACKED SINGLETON COUNCIL MEETING HAS VOTED TO CONTINUE THE PROCESS OF CLOSING WALLABY SCRUB ROAD.

Despite some very loud protests from members of the community and two councillors in opposition, the resolution to close the road was passed.

The closure of the historic convict road has long been a contentious issue but the latest decision is a positive one for the Hunter mining industry as the MTW expansion will ensure the livelihoods of workers and local suppliers.

MTW General Manager Colin Mackey said they were pleased with the outcome which will allow

them to continue to contribute to the local economy and community.

“We remain committed to working with Singleton Council to secure a positive future for our mine and the residents of Bulga and Singleton. The council can now recommend to the minister that Wallaby Scrub Road be closed. This will enable mining at Mount Thorley Warkworth to continue in accordance with the consent provided by the independent Planning Assessment Commission in November 2015.” Mr Mackey said.



SEEK NEW JOB ADS NSW July 2017 vs July 2016



MORE MINING JOBS

THE LATEST DATA FROM JOB SEEKING SITE SEEK SHOWS THE MINING INDUSTRY IS LEADING THE PACK FOR THE NUMBER OF JOBS AVAILABLE IN NSW.

Michael Ilczynski, Managing Director for SEEK Australia and New Zealand, said the Mining, Resource & Energy industry enjoyed the fastest rate of advertising growth of all industries on SEEK this year.

At a national level, job ads for the Mining, Resource & Energy industry were up 84 per cent year on year,” said Ilczynski. “The pick-up of exploration activities by mining companies after cutbacks over the past few years, is driving

job advertising growth on SEEK across the mining, resources and energy industry.”

This increase in mining jobs was also reflected in global recruitment agency Hays quarterly report who stated that the renewed optimism and improved sale prices are helping to increase vacancy activity. They also report that certain skill shortages are emerging again, and in particular for NSW are skilled Boilermakers.



PH 4932 7379 or 4932 8023
www.jsengineering.com.au



Australian owned and operated

J&S Engineering are the TRACK FRAME SPECIALISTS

J&S HAVE BEEN AT THE FOREFRONT OF RE-MANUFACTURING TRACK FRAMES FOR OVER 30 YEARS!

- UPGRADES AND REPAIRS TO ALL DOZER & EXCAVATOR TRACK FRAMES.
- STRESS RELIEVING ALL STRUCTURAL REPAIRS.
- D10 & D11 HIRE UNITS AVAILABLE.
- LOCAL WORLD CLASS FACILITY UTILISING MODERN PROCEDURES WITH ALL PROCESSES IN-HOUSE, DELIVERING A FAST TURN AROUND.
- PICK UP AND DELIVERY SERVICE AVAILABLE.
- J&S RE-MANUFACTURED TRACK FRAMES DELIVER LOWEST TOTAL COST OF OWNERSHIP SOLUTIONS.





EVEN THE GREENIES WOULD BE PROUD

GLENCORE'S MANGOOLA OPEN CUT INVITED @ THE COALFACE ONSITE TO TAKE A TOUR AND SEE FIRSTHAND THEIR BENCHMARK MINE REHABILITATION WORK.

Mangoola is not like some mine sites where as far as the eye can see is a landscape of dust and dirt. Instead, within minutes of leaving their administration building the landscape is transformed into an Ironbark woodland with an impressive vista of native trees and plants, natural grasses and rock piles.

As I stopped to take pictures, I noticed eagles overhead and wallabies darting off in the distance. I could hear birds twittering in the trees and I was struck by the tranquility. It was hard to

believe I was standing on what only a few years previously was a working mine site.

SINCE 2010 WHEN MINING STARTED, MANGOOLA HAVE BEEN WORKING TOWARDS RECREATING NATURAL LANDFORMS AND HAVE SO FAR COMPLETED 425 HECTARES OF THE 1500 OF REHABILITATION THAT WILL BE DONE WHEN THE MINE CLOSES.

From the very first stages of mine planning, rehabilitation factors into everything. No waiting until to the

mine closes and then trying to meet regulations. Mine rehabilitation is forefront in everything they do and it shows.

The rehabilitation follows as close as possible behind the mining process, normally within a couple of hundred metres of the pit shell. This allows more time for the woodlands to establish and also minimises air pollution and assists with dust control.

Their rehabilitation works include creek zone restoration, the use of locally sourced native seeds, translocating threatened species, salvaging timber from the clearing process for stag trees and using nest boxes made by the Denman's Men Shed. It's all about creating an

ecological community that will thrive long after they are gone.

I'm not the only one who wanted to check out what Mangoola's been up to. Last year they had over 600 visitors including conference and school groups and even other local mine representatives came to take a peek. Mangoola is proud of what they are doing and only too happy to share their knowledge with anyone who is interested. Plans are in the works to establish viewing platforms and an interpretive walk, which will be open to the public during organised tours.

Seeing the impressive work Mangoola have achieved in only six years makes the future of mining rehabilitation here in the Hunter very promising.



TRADECORE
INDUSTRIES

PH (02) 6572 4811
www.tradecore.net.au

16 MAGPIE ST
SINGLETON

MINING MAINTENANCE AND OVERHAUL SPECIALISTS

MAJOR CAPABILITY & EXPERIENCE DELIVERED WITH FAMILY VALUES

TradeCore are your one stop shop for complete maintenance services:

- Fabrications and welding repairs
- Asset management
- Earthmoving equipment repairs
- Labour Hire
- Light vehicle repairs and servicing
- Equipment and commercial light vehicle hire fleet
- High voltage and auto electrical services





MAT GODDARD ACCEPTS THE COMMUNITY AWARD



MINISTER DON HARWIN, NCIG CEO, AARON JOHANSEN, NCIG SAFETY ADVISOR DUNCAN HISLOP AND STEPHEN GALILEE

TROPHY TIME

THE 2017 NSW MINERALS COUNCIL HEALTH, SAFETY, ENVIRONMENT AND COMMUNITY CONFERENCE AWARDS RECOGNISED THE INNOVATION AND EXCELLENCE IN OUR INDUSTRY THIS YEAR AND THESE ARE THE WINNERS.

Newcastle Coal Infrastructure Group (NCIG) were named the winner in the Health Excellence category for their Bounce Program.

Started in 2012, the Bounce program was aimed at positively impacting

the health and welfare of employees, contractors and their families by managing safety risk together with overall productivity.

It incorporates assessment, prevention and treatment strategies,

however, the key element that sets this program apart is setting health initiatives based on ongoing identified workforce health risks and needs. Annual themes have included weight loss, improvement to BMI, increasing functioning movement, improved nutrition and increasing fitness and movement and a staggering 98 percent of the workforce took part in this year's challenge.

NCIG Chief Executive Officer, Aaron Johansen said reducing workplace safety risks and improving productivity are just some of the benefits of the Bounce program.

"This recognition is much appreciated

and obviously a great outcome for us, but our people are our most important asset and helping to improve their ongoing health and well-being is the best outcome we could have hoped for."

NCIG also won the Environmental Excellence category which recognised the success of its Compensatory Habitat and Ecological Monitoring Program.

For the last 5 years NCIG have progressively implemented its program focused on conservation and offset measures for the endangered Green and Golden Bell Frog (*Litoria aurea*), as well as species



Holden | Cessnock City Holden

Cessnock City Motor Group - The Hunter's proudest family dealership.
240-246 Maitland Road Cessnock NSW 2325
Sales: 02 4993 6000 | Service: 02 4993 6085



THE REAL WINNER OF NCIG'S ENVIRONMENTAL PROJECT, THE GREEN & GOLDEN TREE FROG

of migratory shorebirds protected under international and federal environmental laws.

They have restored degraded land and areas previously occupied by Endangered Ecological Communities to sites of high biodiversity value, all within a National Park. This has been done with numerous stakeholders including government and non-government organisations to help deliver enhanced ecological outcomes for the Hunter Wetlands National Park.

The Community Excellence winner was Rio Tinto Coal & Allied's Enterprise Facilitation program.

It was established in 2015 in response to the economic impact of the previous mining downturn, the need for economic diversification in the Upper Hunter region and as a Social Licence improvement project.

Free advice is provided to assist local entrepreneurs, business owners and community groups to establish, strengthen or expand local businesses and social enterprises. This work is supported by a network of volunteers with experience and networks across various business disciplines. More than 100 clients have been helped and at least a dozen new businesses have commenced operation.



EVOLUTION MINING'S OHS MANAGER TROY PETERS ACCEPTS THE WIN

Project facilitator Mat Goddard told us that it was great to win the award as it brought recognition to a program that is not only a great tool to effectively and positively engage with communities, but it is also a great mechanism for building diverse and sustainable economies around our industry.

The Safety Excellence award went to Evolution Mining's Cowal Gold Operations Project Arrive Alive.

In 2016, Cowal Gold Mine identified two incidents had been caused by micro-sleeps. Many employees had a commute that prevented them from being able to have at least 8

hours sleep between shifts, causing fatigue and in numerous cases stress. The investigation also identified that some past incidents may have involved fatigue.

Project Arrive Alive saw workplace changes implemented including a maximum of 14 hours door-to-door, mandatory use of buses where buses operated, fatigue education, sleep and fatigue management through technology and psychological training to help employees understand the long-term impact of fatigue.

CONGRATULATIONS TO ALL THE 2017 AWARD WINNERS AND NOMINEES.



14 RAILWAY PARADE, KURRI KURRI

www.spectromhire.com.au



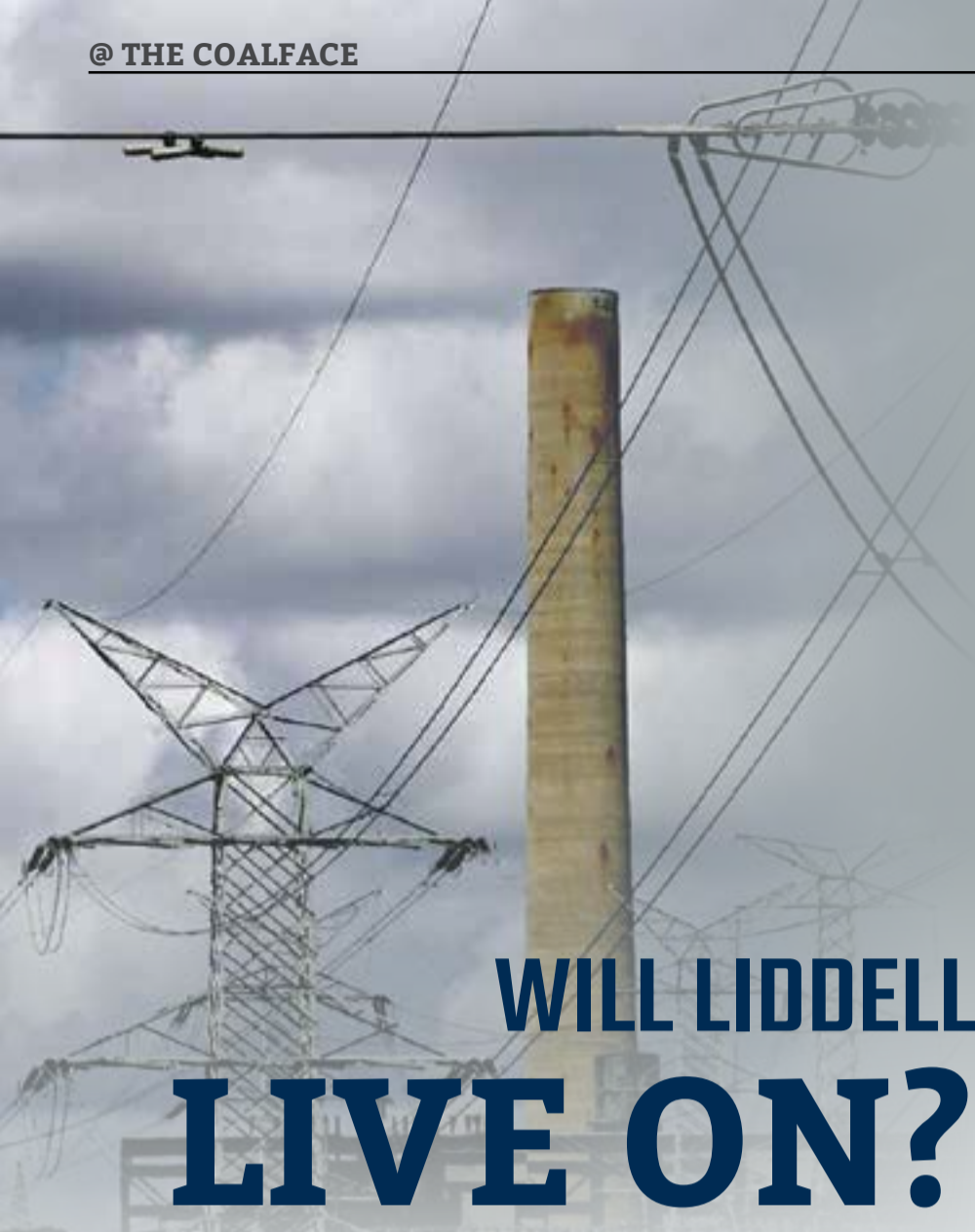
PH: 02 4937 2047

sales@spectromhire.com.au

YOUR ONE STOP SHOP FOR ALL WELDING AND HEAVY SITE EQUIPMENT HIRE, SALES AND SERVICE.

- Hire of welding equipment, air compressor, generators, plus distribution boards, leads, buggy travel carriage, pipe rotators and more.
- Authorised repairer for Lincoln, Miller, Powermax, MOSA, Powerlite, Hypertherm and others.
- New equipment, consumable and PPE sales.
- Fully equipped and qualified workshop servicing, repairing and overhauling of your equipment.
- Meg testing of welders and generators, at our workshop or on site.
- Repairs and servicing at our workshop or on site.
- Test and tag - electrical and gas equipment by qualified electricians.
- Mine spec machines to specific site requirements.
- Authorised warranty repairers for Lincoln, Miller, WIA, and MOSA.
- Stud welding – shear connectors, wear studs and arc studs. Supply and installation of bondeck and wear plates both in house and onsite.
- Delivery and pickup: utilising a comprehensive fleet of delivery vehicles and crane trucks.





WILL LIDDELL LIVE ON?

IN 2022, AGL PLANS TO CLOSE THE LIDDELL COAL-FIRED POWER STATION BUT AN ANNOUNCEMENT BY PRIME MINISTER MALCOLM TURNBULL MAY SEE THOSE PLANS POSTPONED.

'AVE A LAUGH WITH

A statue of a man and a statue of a woman stood looking at each other for hundreds of years out in a park. One day a wizard, feeling sorry for the statues, brought them to life for 30 minutes. Right away, the two of them ran into some nearby bushes and you could hear all kinds of strange sounds and moans from



alfabs.com.au | PH 1300 ALFABS (253227)

there. After a while they came back out, giggling. The wizard told them "You have another 15 minutes left, if you want to have another go." The statues looked at each other and the male statue answered, "Fine, but this time you hold the pigeon and I'll poo on it."

The recent Australian Energy Market Operator annual report revealed that the national market is vulnerable and recommended existing plants remain open for longer rather than the construction of any new plants. The report has prompted Mr Turnbull to raise the idea in Parliament to extend the life of Australia's oldest coal fired power station.

IN A PHONE CALL TO AGL CHIEF EXECUTIVE ANDY VESEY, MR TURNBULL DISCUSSED THE IDEA OF KEEPING THE POWER STATION OPEN FOR AT LEAST 5 MORE YEARS.

"The Energy Minister and I are already in discussions with the owner of Liddell, AGL, about how we can ensure that that power station stays in operation for at least another 5 years after 2022," Mr Turnbull said.

However, responding to the request

on Twitter, Mr Vesey has dismissed the idea saying that keeping old coal plants open won't deliver the reliable, affordable energy their customers need.

"We're getting out of coal. We committed to the closure of the Liddell power station in 2022, the end of its operating life." said Mr Vesey.

But AGL's commitment to closing the plant may not be the end of it as the Federal Government has proposed that they sell the plant to another operator who would be willing to keep it open. The Federal Government said they would be unlikely to purchase themselves as they would prefer it to be owned by the private sector.

Locally this would be a great outcome for workers jobs and suppliers as well as reducing electricity prices for consumers.

NOW OPEN

TITAN

AUTO MAINTENANCE

COALFACE SPECIAL

MENTION THIS AD AND RECEIVE 10% OR \$50 (WHICHEVER IS HIGHER) OFF YOUR NEXT VEHICLE SERVICE

Titan Auto Maintenance is a mechanical workshop specializing in the repair and maintenance of most makes and models of vehicles.

Our team of mechanics are experts in their field with each member having their own specialty and qualifications including but not limited to:

- SERVICING
- ALL LIGHT VEHICLE MECHANICAL REPAIRS
- MINE SPECCING - FLAGS, CHOCKS, LIGHT BARS, REFLECTIVE STICKERING, FIRE EXTINGUISHERS, UHF INSTALLATION
- TRAILER MAINTENANCE AND REPAIRS
- LIGHT TRUCK MAINTENANCE AND REPAIRS

LICENCE NUMBER MVRL54428

Email: ben@titantech.com.au phone: 02 4966 2551 address: 25D Sandringham Ave Thornton NSW 2322



WHAT AN EXHIBITION

IF YOU DIDN'T MAKE IT DOWN TO AIMEX THIS YEAR, HERE'S A SNAPSHOT OF WHAT YOU MISSED OUT ON.

This year was clearly smaller than past events, perhaps due to recent difficult times, however AIMEX is still an important event on the industry calendar.

The event kicked off with the Future of Mining Conference where industry leaders and mining experts shared their knowledge. First up was a panel discussion with World Coal Association Chairman Mick Buffier, NSW Mining CEO Stephen Galilee, and BIS Oxford Economics Senior Economist Adrian Hart.

These guys had plenty to say about the future of the mining industry and heading the talk was that coal isn't going anywhere despite the anti-coal sentiment that our industry has always faced.

IT WAS REASSURING TO HEAR THEIR OPTIMISTIC VIEWS ABOUT THE FUTURE DESPITE THE CURRENT POLITICAL ENERGY DEBATE AND THE INCREASING DIFFICULTIES OF PLANNING APPROVALS, AND THIS OPTIMISM REMAINED PROMINENT WITH OTHER SPEAKERS OVER THE THREE DAYS.

But enough about the boring conference, we know you want to

hear about the coolest equipment on the floor.

If what we saw on the exhibition floor is an indication of what's trending in the industry, then gravity assist equipment is where it's at. We saw lots of variations all with different applications, but we were most impressed by Kaltire's Gravity Assist System. This futuristic robot arm has taken all the work out of changing our industry's monster tyres and it does it while looking super cool.

Hedweld were showcasing their latest designs in ladder and stair access systems with safety features second to none. Designed to make ingress and egress to big machines safer, more efficient and easier.

High Tech was everywhere, from Nautitech's thermal cameras, SolarOne's battery free technology and Control Systems Technology's IntelliRoll that lets you view your weighing data from an app on your phone.

Since AIMEX 2015 there's been some big changes in the industry and it's exciting to think of what we will see at AIMEX 2019.



WE'LL KEEP YOU OPERATING

24 HOURS, 7 DAYS A WEEK,
98 LOCATIONS



Contact:

Dubbo

Call 0417 844 578

Gunnedah

26 Barber St. Gunnedah (02) 6742 4988

Lithgow

1 Ian Holt Dr. Lithgow (02) 6355 7004

Maitland

129 Racecourse Rd. Rutherford (02) 4932 1120

Mudgee

36 Sydney Rd. Mudgee (02) 6372 3454

Muswellbrook

88 Maitland Rd. (02) 6543 4255

Newcastle

20 Munibung Rd. Cardiff (02) 4954 5933

Orange

97 Elsham Ave. Orange (02) 6360 2944

Singleton

14 Maskey Rd. Mt Thorley (02) 6574 2782

Tamworth

4/61 Barnes St. Tamworth (02) 6762 0600



134-222

24 HOURS - 7 DAYS

www.pirtek.com.au

ALFABS ARE ALL GO

WE SAT DOWN WITH JAY TORRENCE TO DISCUSS HOW THIS WELL-KNOWN HUNTER FAMILY BUSINESS STARTED FROM NOTHING TO BECOME A POWERHOUSE USING DETERMINATION AND INNOVATION.

Jay Torrence is a bloody busy bloke who is next to impossible to pin down so we camped in his reception until we wore him down and he gave in and had a chat. Don't get us wrong, Jay is a top bloke and wasn't being rude, it's just that he really is busier than the proverbial one-armed bricklayer in Bagdad.

From the moment Jay started talking it was clear how much this company, the work it does and its reputation, means to him, his brothers, and his dad Paul who started it all.

While this is a family business, what it has grown into is something much bigger and more capable. Started in around 1988 by Paul as a one-man operation it has now grown to about

180, including 6 apprentices and trainees and locations all along the East Coast of Australia including their home base at Kurri.

Heading up the day to day operations are Paul who is Managing Director, Matt who is CEO, Andrew the site team leader and of course Jay who is General Manager. The boys base the way they go about things in a simple but meaningful way. Quality on time and a safety-first attitude which means Zero Harm is even a part of their logo!

"DAD PAUL IS STILL THE MANAGING DIRECTOR, BUT THESE DAYS HE'S HANDED A LOT OF IT OVER TO US AND IS ENJOYING AN EASIER LIFE, FART ARSING

AROUND AFTER YEARS OF HARD WORK CREATING THE BUSINESS." JAY TOLD US.

The downturn threw plenty of challenges their way and diversification was key to navigating the storm. Jay said, "We downsized like everybody and battened down the hatches so we could survive and prosper. Diversifying into other

industries was a big part of that. We still work with every coalmine out there and they are a very important part of the business but over recent times we have added a range of Australia's largest construction and infrastructure companies and government projects into the mix."

Being a family company means giving back to the community has always been an integral part of the company's make up and over the years they have invested a small fortune and countless hours where they are needed. "We are into just about everything and are active across charity sporting events and any good cause that knocks on the door. Alfabs Group has and believes in a strong community presence and corporate responsibility to support local community and sporting groups and charities. The Alfabs Kurri Kurri Bulldogs Rugby League Club, Westpac Rescue Helicopter, Cancer Council and Life Project Cambodia are just a few that come to mind." Jay said.

ANOTHER CRACKER WAY THEY GIVE BACK IS THE ALFABS CHILL N GRILL COMMUNITY BBQ. THIS CUSTOM-BUILT TRAILER

WITH THE TAG LINE "QUALITY SNAGS ON TIME" WAS MADE TO HOLD CHARITY BBQ'S AT LOCAL COMMUNITY EVENTS AND THEIR CUSTOMERS WORKPLACES TO RAISE MUCH NEEDED FUNDS FOR THE DESIGNATED CHARITIES.

On the future Jay said "We see mining as being much steadier now and there seems to be more continuity ahead which is better than the crazy boom times. On the shop floor, more automation and gradual growth is the direction we are sailing in. We plan on keeping going till we drop and maybe bringing more of the staff into the key areas of the business. Our staff are our key to our business going forward and surviving, some have been here up to 25 years."

The three brothers who all work in the business are all very close and love nothing more than a good day's work. But though work's clearly the priority they don't mind a bit of time off either at the farm or on the family boat to recharge the batteries.

Good luck for the future Alfabs... you've worked bloody hard for it.



AE ALFABS 1300 253 227

QUALITY ON TIME

ENGINEERING
LOGISTICS
PROTECTIVE COATING
SITE SERVICES
MINING
EQUIPMENT HIRE
RAIL

ALFABS GROUP **HUNTER VALLEY** **WOLLONGONG** **MACKAY** **www.alfabs.com.au**

PARALLEL ECONOMICS

CLIMB ABOARD

WHEN I LOOK AT SOME OF THE HUNTER'S MINING VOIDS, I DON'T SEE AN EYESORE. I SEE AN OUTDOOR ADVENTURER'S PLAYGROUND.

Climbing, abseiling, traversing, bouldering. This is what I imagine when I look out the window driving through the Upper Hunter and see the large open pits with their layered rocky walls.

For most people who want to have a go at climbing activities, the only real options are to try one of the indoor climbing gyms. Equipment is so expensive that most of us will never be able to afford the gear needed. Never mind not having the experience or knowledge to be able to try it on our own.

Imagine a place that you could go to that provided all equipment, all the instructors, all the thrills. That could cater for the beginner to the expert. A permanent set up that had all the accompanying necessities like a place to buy a beer after, a gift shop where you could buy your 'I climbed out of a mine' shirt and of lots of places to get a bite to eat.

A lot of the infrastructure is already in place to get it started, buildings and sheds could be repurposed as required. If a venture

like this was planned to coincide with the end of a mine's life then all the mine equipment and machines could be used to create the necessary modifications and stabilisations to turn it into an amazing adventure mecca.

And it doesn't stop at climbing. Bungee, giant ropes, zip lines, canyoning, there is a myriad of possibilities to use these ready-made pits.

'AVE A LAUGH WITH



alfabs.com.au | PH 1300 ALFABS (253227)

I just read a book about Stockholm syndrome.

It was pretty bad at first, but by the end I liked it.



Mining Tyre Group

THE LEADERS IN MINING TYRE SERVICE, SUPPLY & REPAIR

Kal Tire Muswellbrook repairs all sizes of earthmover tyres and specialise in the complete range of tyre management services for mining and industry.

The facility has an extensive history and reputation for quality repairs within the Hunter Valley over the last 25 years.

The Muswellbrook repair facility has long term experienced and qualified tyre repairers who work and live in the Hunter Valley and is a locally based employer.

PH 02 6542 5281

28 STRATHMORE ROAD MUSWELLBROOK

e: Australia@kaltire.com www.kaltiremining.com





PRIZE BULL
COLINTA LEVI

HUNTER BORN AND BRED

AGRICULTURE AND MINING AGAIN JOIN FORCES TO TAKE HOME THE BLUE RIBBON AT THE ROYAL QUEENSLAND SHOW.

The name Glencore is synonymous with mining, but in fact only 10 percent of the land owned by Glencore is used for mining

and around 80 percent used for agricultural purposes. Colinta Holdings is the wholly-owned subsidiary of Glencore, occupying

and managing more than 360,000 hectares of Glencore land across NSW and Queensland and this year Colinta took out some top honours at the Royal Queensland Show with cattle raised right here in the Hunter.

Colinta's General Manager, Gary Johncock said it is an example of mining and agriculture not only coexisting but excelling.

"I believe we're demonstrating that it is possible to run a successful

pastoral business alongside active mining operations. We run 1000 stud and commercial Charolais and Charbray cows on what is peripheral mine land. Our winning bull, Colinta Levi, was bred on property that is surrounded by Glencore's Liddell, Mt Owen and Ravensworth open cut mines in the Hunter Valley and bulls from this property are used within our breeder herds in NSW and Queensland." Mr Johncock said.

COLINTA'S FEEDER STEERS AND HEIFERS ARE FATTENED ON GLENCORE MINE REHABILITATION AS WELL AS THE BOBADEEN IRRIGATION FACILITY NEAR MUDGE, WHICH USES WATER FROM THE ULAN UNDERGROUND MINES TO DRIVE FIVE CENTRE POINT IRRIGATORS.

The commitment that Colinta has to herd improvement was on display at the show with Colinta Levi crowned Grand Champion Charolais and Interbreed Pair bull. Colinta also took out Grand Champion Charbray bull and Grand Champion Charbray female. Mr Johncock said. "The success at the show has provided an accurate benchmark on where we stand against best of breed and we are very happy with the wins."

This prized bull Colinta Levi didn't just take home the prize at the show, earlier this year he was recognised as the high-selling bull at the National Charolais Show and Sale at Dubbo with a sale price of \$20,000.

And that's no bull.



Fluren

PROVIDING QUALITY SERVICES FROM A COMPANY THAT CARES ABOUT RESULTS



Earthmoving • Mining Services • Polywelding
Rehabilitation • Civil Construction • Land Management

PH 02 4966 8429
www.fluren.com.au

SCOTT WINTER



MY MINING LIFE

HEADING UP THE HUNTER'S NEWEST COALMINING COMPANY IS A BIG JOB, BUT KEEPING YOUR FEET ON THE GROUND AND YOUR HEAD OUT OF THE CLOUDS MAKES IT AN EXPERIENCE OF A LIFETIME FOR MACH ENERGY'S SCOTT WINTER.

Where do you work?

MACH Energy's flagship project is the Mount Pleasant Operation and as someone who enjoys being part of the action I spend a lot of time in Muswellbrook away from my other home in Brisbane.

How different is your job from what you wanted to be when you were a kid?

As a child I wanted to be like Dad,

working in agriculture in the bush. Going through school I wanted to be an engineer as I loved maths and chemistry which lead me to head-up a company that owns multiple energy assets. Fortunately I haven't quite grown-up yet so there is plenty of scope for continuing to convert dreams into reality.

Any nicknames on or off the job?

I got some interesting ones when I was playing footy and more

recently was called "Frosty" when playing water polo.

How did you get your job?

Luck; being in the right place at the right time; experience; integrity; education; resilience; unwillingness to accept 'no' and sheer persistence? For my current role I saw a gap that existed between investors and resource assets in Australia. Purchasing a thermal coal operation during the global economic downturn meant I was required to draw upon most of the elements I mentioned previously. Industry commentators were shaking their heads. With adrenalin rushes in check I was leading Australia's smallest (and newest miner) to purchase a greenfield asset from one of the world's largest miners. The rest is history.

What's a usual day at work?

Some of my team are early-risers, while I prefer to burn energy in the pool or the bike or spending time with family before coming into work. I try desperately not to be driven by email and usually spend the first part of the morning chatting with various people in the office. As a team of 13 full-time MACH Energy employees I soon move into meetings or matters that require my attention.

What's the best thing about your job?

I get a buzz out of watching how people react to various situations - watching the enthusiasm and passion that they bring to their role each and every day and seeing them grow. I continually ask 'Why not?' and in time my team has embraced that expression to produce exceptional results. Industry-

leading results have been achieved because they aren't working through months of discussions with disconnected steering committees and corporate 'red-tape'.

What's the worst thing about your job?

Not being able to easily identify the worst thing about my job is the worst thing about my job.

Does your job influence your family life? How?

We find the balance and are our happiest after turning off unnecessary distractions, spending time together and talking about life in general. For teenagers this is code for nagging.

A funny story at work?

My colleagues at work are known to pull-off a few harmless stunts, all in good jest of course. Commemorative wine has been replaced with empty bottles, documents have gone missing or false truths have been announced as fact just to stir reactions.

What are your future career plans?

My future of course revolves around MACH Energy and strengthening our reputation and business interests in the energy sector and communities we work in and with. I expect we will become known as being decisive, innovative and resourceful. As one team that is united with the community, I'm extremely keen to drive our focus on energy, which of course means developing as a business and acquiring new assets. Exciting times ahead as already, we are MACH'in it happen!



'AVE A LAUGH WITH alfabs.com.au | PH 1300 ALFABS (253227)

A man is attending the NRL Grand Final, when he notices an empty seat. Thinking this is strange he asks the person sitting next to the empty seat if he knows who sits there.

The guy replies: Well, I bought two tickets for my wife and I a long time ago, but she passed away.

So the man asks: Couldn't you have brought someone else?

The guy replies: They're all at the funeral.

MAXHIRE EQUIPMENT DRY HIRE SPECIALISTS

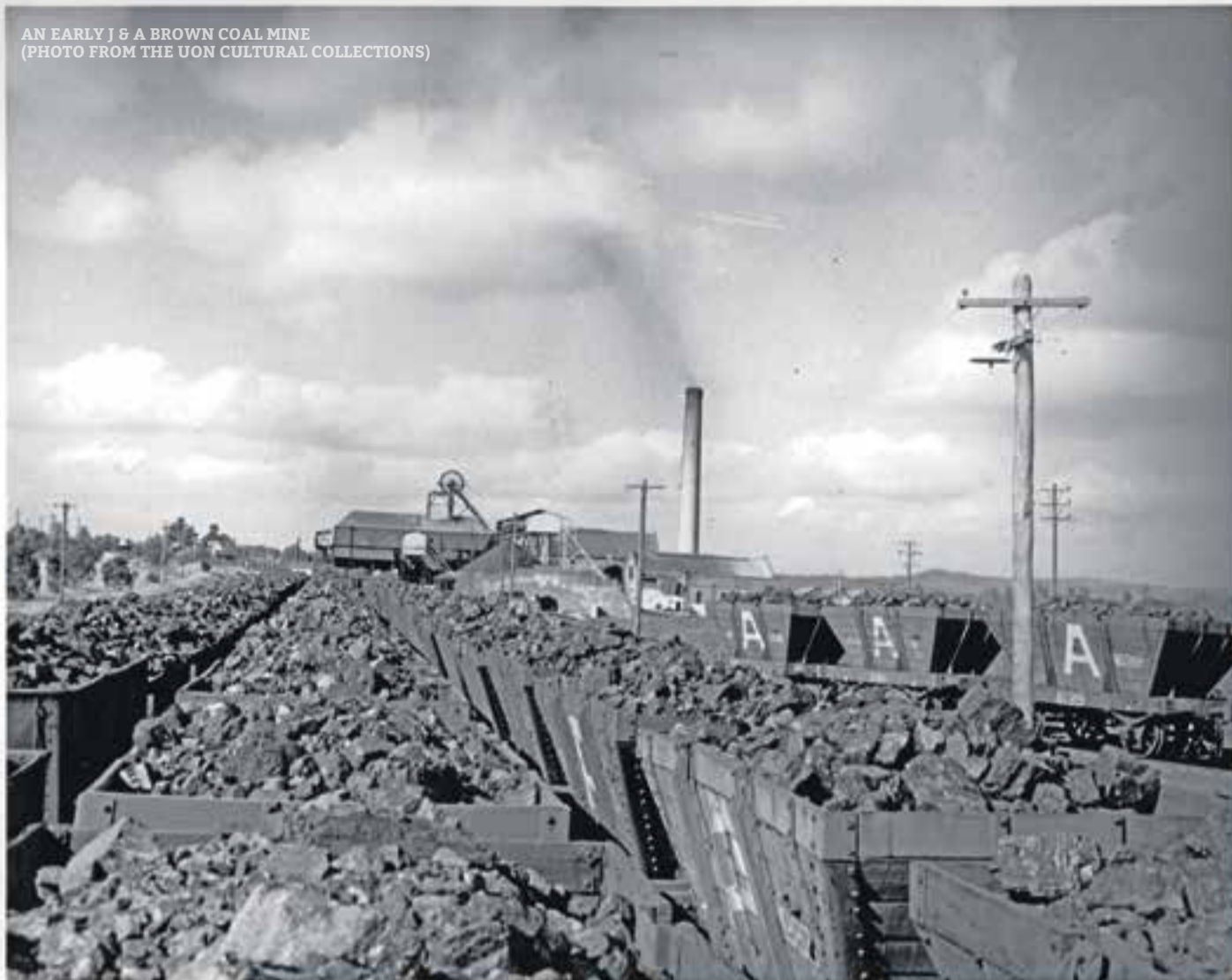
DOZER | EXCAVATORS | SKID STEER | BACKHOES | TRUCKS | ROLLERS | GRADERS | LOADERS | COMPACTORS | MINI EXCAVATORS

PH 02 4936 8100

21 KYLE STREET RUTHERFORD NSW 2320
www.maxhire.com.au



AN EARLY J & A BROWN COAL MINE
(PHOTO FROM THE UON CULTURAL COLLECTIONS)



THE BROWN BROTHERS

J & A BROWN WAS A FAMILY COAL COMPANY FOUNDED IN 1843 AND WAS ONCE THE LARGEST COAL PRODUCER IN NSW AND THEY PLAYED A BIG PART IN THE HISTORY OF THE HUNTER COALFIELDS.

Alexander Brown and his wife Mary were Scottish immigrants who migrated to Sydney in 1842 before settling in Newcastle. With them were their four sons, James born 1816, William born 1820, John born 1826 and Alexander born 1827 and five daughters.

In 1843 the two brothers James and Alexander founded the company J & A Brown and their Hunter coal dynasty was born. John was also involved in the company however the fourth

brother William was a doctor and did not play in a part in the family mining firm and he died in 1859.

IN 1843 WITH MONEY HE HAD MADE WORKING IN A STOCKTON TWEED FACTORY, JAMES LEASED EIGHTY ACRES OF LAND AT FOUR MILE CREEK, NEAR EAST MAITLAND, AND WITH THE HELP OF HIS BROTHERS JOHN AND ALEXANDER BEGAN SURFACE COAL MINING.

At the time, The Australian Agricultural Company

(AAC) had exclusive rights to mine the area because of an agreement with the Crown. Initially they paid little heed to the Brown's mining, but after being undercut on a shipping contract they sued James Brown.

The case was heard in the Supreme Court in 1845 with James's counsel arguing that the agreement between the company and the crown was illegal as it promoted a monopoly, and also disputing the Crown's right to reserve coal on land which it sold.

James lost the case and the subsequent retrial and J & A Brown were forced to move their operations to lands closer to Morpeth that were not covered by the ACC. However, the case forced a government inquiry into the ACC's monopoly which recommended it cease and in 1847 the AAC announced its termination of the agreement.

It was also in 1847 that the brother John died after becoming overcome by gas during the sinking of a mine shaft at Four Mile Creek.

After ten years of small-scale mining in the East Maitland area and with the freeing up of mining areas after the A.A. Co. dropped their monopoly on coal mining, James and Alexander Brown

moved to the Burwood estate south of Newcastle and built a successful new mine. By 1857 they owned extensive property assets and businesses in Newcastle including a ship-chandlery and import-export business, and a least one ocean-going ship.

In 1859, they acquired the Minmi colliery and its railway to Hexham. They increased its output from 44,000 tons in 1860 to 111,000 tons in 1862. They developed the Minmi township and set up workshops to service their locomotives and steamships. In 1865 two new mines were developed and, though one failed, J. & A. Brown was once more the largest producer in the colony in 1868.

IN 1843-86 JAMES AND ALEXANDER BROWN PRODUCED MORE THAN THREE MILLION TONS OF COAL AND SO WELL ESTABLISHED THEIR COMPANY THAT BY 1914 ITS TOTAL OUTPUT EXCEEDED SIXTEEN MILLION TONS, ABOUT 8 PER CENT OF THE TOTAL PRODUCTION OF NEW SOUTH WALES FOR THE PERIOD.

Alexander died in 1877 and James solely managed the company until retiring in 1882 and passing on management of the company to his son John Brown. James was the last of the brothers to die in 1894.

The success of J & A Brown can be attributed to these two talented brothers James & Alexander, and their persistence, dedication and enterprising spirit.

Over the years the company has seen many amalgamations and mergers and in 1960 it became Coal & Allied Industries Limited. This transformation is still continuing today as the sale to Yancoal is concluded and the legacy of the Brown Brothers lives on.



ONE STOP for pumps



4057 0281







Aussie Pumps





1,000K'S FOR KIDS

THE 1000K'S FOR KIDS IS A 1000KM BIKE RIDE OVER 10 DAYS TO RAISE MONEY FOR KIDS LIVING WITH CANCER. AROUND 40 RIDERS AND 20 CREW VOLUNTEER THEIR TIME, WITH MANY OF THEM BEING IN THE COAL INDUSTRY.

This year the ride finishes on September 17 with the dedicated riders and volunteers making their way from Benalla in Victoria to Warners Bay. With stops at Albury, Wagga, Cootamundra, Cowra, Parkes, Wellington, Gulgong, Sandy Hollow and Muswellbrook they aim to spread awareness as well as hitting this year's fundraising goal of \$500,000 for Camp Quality.

Representing our industry are Jarret Pacheco and Anthony Fleming from Bengalla, Dean Dunn from Glencore, Tim Hvirf from Mt Arthur, Simon Mead from Wambo, Luke Redgrove from MTW, Peter Hodgson from Orica, Ian Richardson from AECOM, Brendan Rae from Subtilis Engineering and Jayden Rowett from Downer.



@ THE COALFACE ASKED SOME OF THESE GUYS WHAT MADE THEM SWAP THE HIVIS FOR LYCRA.

"I became involved in the ride through a friend who had completed the first ride. I had always wanted to do something like this to help and this seemed like a good place to start. This year will be my fifth year of riding and I have raised over \$30,000 so far for this wonderful charity that helps kids smile and laugh while bravely battling cancer." **Anthony Fleming, Bengalla**

"While I do like blowing stuff up, I'd much rather ride 1000k's for Kids with 50 other crazy bike riders. 10 days working or 10 days bike riding. Option B any day and besides, it's for the kids." **Peter Hodgson, Orica**

"I joined the Camp Quality 1000k's for Kids to support and help kids and their families. I was looking for a challenge, and I found it. What better way to improve your health and fitness and help others at the same time." **Simon Mead, Wambo**

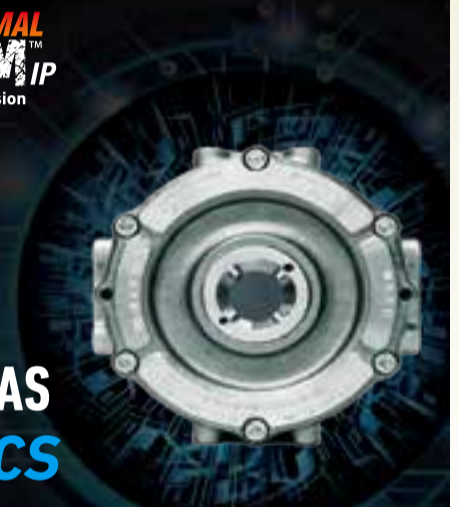
www.1000ks4kids.org.au/newcastle



NAUTITECH
DEVOTED TO SOLUTIONS IN HAZARDOUS AREAS



THERMAL EXTREMECAM IP
We have vision



THERMAL CAMERAS WITH ANALYTICS

Better Vision for Higher Productivity and Safety

Continuous real-time detection and data analysis for critical decision making in hazardous areas with impaired visibility due to fog, dust, heat, or darkness. Benefits of Analytics:

- Detect a pedestrian or combustion hazard
- Initiate a visual or audio alarm, or de rate machinery
- Stream video to remote location
- Continuously record for up to 72 hours



MARKET LEADING PRODUCTS DEVELOPED AND PRODUCED IN AUSTRALIA

www.nautitech.com.au +61 (2) 9899 6857 sales@nautitech.com.au

ONE STOP for all hoses and fittings

Hydraulic hose assemblies while you wait

No assembly fees



MAXIMUS

Hydraulic and industrial hose fitting kits for mining and OEM

MDG 41 compliant

7/11 Kyle St Rutherford
maximusindustrial.com.au



COMMUNITY GIFT

A SMALL GROUP OF LOCAL PEOPLE HAVE BEEN WORKING HARD TO HAVE A LIFE-SIZED BRONZE STATUE OF A PIT HORSE ERECTED IN KURRI KURRI. THIS MONTH OUR \$500 COMMUNITY GIFT IS GOING TOWARDS THEIR PIT HORSE MEMORIAL STATUE PROJECT.

Pit horses played an integral role in early mining due to their strength, aptitude and temperament. The statue will recognise their role and celebrate the bond that existed between horse and miner.

\$25,000 has so far been

raised of the \$100,000 needed thanks to local fundraising and strong community support.

With a long way still to go it would be great to see some corporate donations or grant funding help them cross the finish line.

If you want to do your part to ensure the legacy of the Coalfields pit horse you can donate at www.gofundme.com/pit-horse-statue

BENGALLA'S BIG DAY

IF YOU EVER WANTED TO GO ON A GUIDED TOUR OF AN OPERATING MINE OR SEE HOW IT FEELS TO GET UP CLOSE TO EQUIPMENT BIGGER THAN YOUR HOUSE, THEN BE SURE TO GET ALONG TO THE BENGALLA COMMUNITY OPEN DAY ON SATURDAY OCTOBER 14.

Between 10am and 2pm the Muswellbrook Showground will be bustling with live entertainment, a free barbeque, plenty of children's activities, from face painting to Wildlife Aid animals, and lots of great interactive displays to learn more about the mine's operation.

Bengalla CEO Cam Halfpenny said: "The Community Day is about opening our doors so people get to know a bit more about us, what we do and our contribution to help strengthen the local community. We are long term members of the Upper Hunter Valley and committed to the future. The event is a great opportunity for us to get out in the community, and a good chance for our employees who live in the area to show their families and friends what they do."

The day will also see some of Bengalla's community partners showcasing their business and supporting

Bengalla. Caltex will be bringing along a replica V8 race car, Hitachi will have its truck simulator on hand to experience and Westpac Rescue Helicopter Service will land one of its new helicopters on the day.

A popular part of the day are the bus tours of the mine.

They run every 15 minutes from the showgrounds to Bengalla and back and if you are planning on attending make sure you get in early to book one so you don't miss out.

It's a great day for families and @ The Coalface hopes to see you there.



HAPPY ANNIVERSARY TO US... THANKS FOR THE SUPPORT!



To celebrate our first year we are giving away an **MDC DELUXE OFF ROAD CAMPER TRAILER!**

Complete with tent, annexe and a host of other accessories.*

RANGER WILDTRAK
FOR IMMEDIATE DELIVERY



NAVARA BLACK EDITION
IN STOCK NOW INCLUDING OTHER COLOURS

*CAMPER TRAILER GIVEAWAY T&C'S: TO GIVE THOSE AN OPPORTUNITY WHO HAVE ALREADY BOUGHT A CAR OFF US THE WINNER WILL NOT BE LIMITED TO THOSE WHO BUY A CAR THROUGHOUT THE PROMOTION. IN SHORT IT WILL RUN FOR 3 MONTHS AND THE WINNER WILL BE DRAWN FROM THOSE WHO WITHIN THE PROMOTION PERIOD EITHER HAVE THEIR VEHICLE SERVICED WITH US, PURCHASE SPARE PARTS FROM US OR BUY A CAR. FULL TERMS AND CONDITIONS ARE ON DISPLAY AT THE DEALERSHIP. PRIZE WILL BE DRAWN ON THE 1ST OF DECEMBER.



45 John St, Singleton
Phone: (02) 4040 6200
www.singletonford.com.au



BRING ON BUNNINGS

FOR MANY OF US HEADING TO BUNNINGS ON THE WEEKEND IS THE HIGHLIGHT OF THE WEEK.

Checking out the latest tools, picking up those bits and pieces for your latest DIY project, or grabbing a coffee after dumping the kids in the play area, it's a handyman's heaven.

For your chance to win a \$100 voucher, simply SMS: **BUNNINGS** and your email address to 0438 474 290.

Limit of one entry per person. LTPM/16/01100

WIN!



FEELING BLUE

RIO TINTO'S HUNTER VALLEY MINES HAVE TURNED 'BLUE' IN SUPPORT OF MENTAL HEALTH AWARENESS.

HVO and MTW mine sites have traded their standard yellow truck trays for vibrant blue to act as a reminder for employees to check in with their workmates on a daily basis.

As part of a site campaign

to generate awareness of mental health and the support available, the MTW Inclusion and Diversity committee identified the opportunity to use the blue trays. By improving access to site-support programmes,

such as peer support officers and the Employee Assistance Programme, the sites are now better equipped with mental health strategies to assist employees.

MTW General Manager Colin Mackey said he was pleased to build on the site's existing mental health programmes and welcomed the blue truck tray initiative.

"THE HEALTH AND SAFETY OF OUR WORKFORCE IS OUR NUMBER ONE PRIORITY AND WITH THE BLUE TRUCK TRAYS NOW VISIBLE AROUND SITE IT IS A CONSTANT REMINDER TO ENCOURAGE CONVERSATIONS AND REMIND PEOPLE TO CHECK IN ON THEIR WORKMATES TO ACHIEVE BETTER HEALTH OUTCOMES," SAID MR MACKEY.

Mr Mackey also acknowledged that it is important to partner with local support services to

improve access to resources and support networks for employees and their families.

"We recognise the importance of connecting with local organisations that have the expertise, resources and support networks to assist with improving mental health in the workplace and community."

IF YOU OR A LOVED ONE ARE FEELING BLUE AND NEED HELP, CALL LIFELINE ON 13 11 14.



KENNARDS
HIRE

FOR ALL YOUR PUMP & POWER NEEDS

PUMP & POWER SINGLETON

Make your job EASY!

PUMP & POWER SINGLETON
2 ROSEDALE CLOSE, MCDUGALLS HILL

02 6574 2600 | kennards.com.au



'AVE A LAUGH WITH alfabs.com.au | PH 1300 ALFABS (253227)

Why are you called One-man-bucket?"
 "...In my tribe we're traditionally named after the first thing the mother sees when she looks out of the tepee after the birth. It's short for one-man-pouring-a-bucket-of-water-over-two-dogs."
 "That's pretty unfortunate."

"It's not too bad. It was my twin brother you had to feel sorry for. She looked out ten seconds before me to give him his name."
 "Don't tell me, let me guess. Two-dogs-fighting?"
 "Two-dogs-fighting? Two-dogs-fighting? Wow, he would have given his right arm to be called Two-dogs-fighting!"

RESHAPE

THE NSW MINING HEALTH, SAFETY, ENVIRONMENT AND COMMUNITY CONFERENCE SAW THE LAUNCH OF A NEW HEALTH AND WELLBEING STRATEGY FOR OUR INDUSTRY CALLED 'RESHAPE.'

RESHAPE is an innovative approach to weight management in the NSW mining industry and has been created within the framework of the Obesity Blueprint that came out last year.

WITH 83 PERCENT OF THE MINING WORKFORCE CLASSIFIED AS

OVERWEIGHT OR OBESE COMPARED TO THE NATIONAL AVERAGE OF 63 PERCENT, IT'S CLEAR OUR INDUSTRY NEEDS TO SHED SOME LIGHT ON THE ISSUE SO WE CAN SHED SOME WEIGHT!

The vision for RESHAPE is to support miners to lose one kilo at a time, one miner at

a time, one year at a time. The current population trend is for weight to increase by 0.3kg each year so this vision would see the population trend be reversed fourfold each year.

The launch at this year's conference was primarily focused on introducing the RESHAPE

Implementation Guide, which is a step-by-step process for NSW mining operations to implement obesity strategies in their workplace.

The NSW Minerals Council will be running workshops throughout the second half of 2017 in Sydney, Singleton and Dubbo aimed at equipping employers with the knowledge, skills and resources to initiate their own programs.

SO, WHAT CAN YOU EXPECT TO SEE HAPPEN AT YOUR SITE IN THE FUTURE? EACH SITE WILL BE IMPLEMENTING THEIR OWN PLANS BUT SOME IDEAS SUGGESTED INCLUDE:

- Healthy food and drink

- options and meal plans
 - Employer sponsorship for events such as triathlons and fun runs
 - 'Walk and talk' meetings
 - Physical activity breaks
 - Resources such as gym equipment and games room
 - Active transport facilities
- Every site will be different but each will use the framework of leadership, encouragement, participation and promotion. The RESHAPE approach is not a 'one off', but instead is about ongoing action and continuous improvement. It's time to reshape not just our bodies but our industry so we can all benefit.

FOR SALE BY PUBLIC TENDER

TEN CAT ROCK TRUCKS

PLUS TWO HITACHI BACKHOES



789C
Mining Truck

CAT

- 2BW00891
- 2BW00800
- 2BW00776
- 2BW00752
- 2BW00114

HITACHI
BACKHOE
EX 1900-5
HCM18C00L00000154



785C
Mining Truck

CAT

- APX00756
- APX00755
- APX00276
- APX00241
- APX00205

HITACHI
BACKHOE
EX 1900-5
HCM18C00L00000144

All units are located in North Queensland, Australia

For full details & tender documents go to www.shinpacific.net

TENDER CLOSES AT 3pm FRIDAY 15 SEPTEMBER, 2017



FIRE SEASON

ALTHOUGH MOST OF US COMPLAINED ABOUT THE COLD NONSTOP, THIS WINTER WAS WARMER AND DRYER THAN AVERAGE WHICH HAS LAID THE GROUNDWORK FOR VERY DANGEROUS FIRE CONDITIONS THIS SPRING AND SUMMER.

The Bureau of Meteorology said it was the driest winter in almost a decade, but all you need to do is ask any farmer and they will tell you that they've seen more beer spilt than rain this winter.

We've already experienced some early season fires and the experts all agree that we could be in for some serious problems with more dry and hot weather forecasted.

Fire safety for us in the Hunter is deadly important so take the time to read our fire safety advice and make sure you and your family are prepared.

HAVE A FIRE PLAN

Make sure everyone in your home knows what to do if a fire occurs. Sit down as a family and discuss what you will do with pets, valuables and most importantly people! Remember leaving early is always the safest choice.

BE PREPARED

There's lots of simple things you can do around the home and yard, like keeping the lawn mowed and bushes trimmed and removing flammable materials. Always have a source of water available and hoses that reach around your whole house.

BE IN THE KNOW

There are 3 bushfire alert levels, advice, watch and act and emergency warning which will help you know what is the safest thing to do at that time. Stay tuned to radios, websites and download the 'Fires Near ME' app to keep up to date with the latest news so you can act fast.

DONATE OR VOLUNTEER

Anytime you see that charity box or raffle raising money for our hardworking volunteer firefighters, dig deep. Or give up your time and volunteer at your local rural fire service.

www.rfs.nsw.gov.au



Mines Rescue

ONE DAY FIRST AID TRAINING



LIFE-SAVING SKILLS FOR JUST \$110

Course includes:

First Aid

CPR

Anaphylaxis

Advanced Resuscitation

Pain Management

For bookings or information contact:

**Hunter Valley
Mines Rescue
(02) 6573 9000**

**Newcastle
Mines Rescue
(02) 4922 4400**

www.minesrescueservices.com.au

Nationally accredited first aid supplier
to industry and the community

Mines Rescue Pty Limited (RTO ID 90508)
ABN: 15 099 078 261

THE MEGA MONTHLY MEAT RAFFLE WORTH \$150 COMPLIMENTS OF ROBERTS MEATS!



The Hunters best butcher of hand picked meaty goodness!

**FOR YOUR CHANCE TO WIN, SIMPLY SMS:
BEST BUTCHER AND YOUR EMAIL ADDRESS
TO 0438 474 290.**

Limit of one entry per person.
LTPM/16/01100

ROBERTS MEATS

WIN!

GET TANKED!

DRIVE OVER ANY OBSTACLE AND THROUGH ANY TERRAIN, EVEN THE DRIVE-THRU, IN THE TINY TINGER TRACK C500 ATV TANK...



The tracks and trails of the Hunter Valley can be bloody tough to travail, even in the toughest 4WD or ATV. When you need to invade unexplored territory up around the ridgelines of the Great Divide, you're gonna' need to call in the not-so-heavy artillery. Said to be the gold standard in ATV's, the Tinger Track C500 swaps out the off-road tyres in favour of a couple of 500mm-wide tank tracks that allow you and up to five passengers to ride over rough as guts tracks and all sorts of obstacles, including mud holes, swamps, river-crossings, chopped forests, and more, powered by a powerful 68-horsepower engine with a towing capacity of over half a tonne!

tingeratv.com



WELD ON THE FLY

GET AFTER THE JOB ON SITE OR OFF WITH THE PORTABLE YET POWERFUL POWERCRAFT 180I READY TO WELD STICK WELDER.

Weighing in at only 6.8 kg, the Powercraft 180i is a tiny beast ready to tackle almost any light to medium duty welding job you can think of. Ideal for maintenance and small repairs jobs around the work site, or at home, this little red box is purpose built for all sorts of general fabrication. All accessories are included, so you are ready to weld right out of the box. It even has a shoulder strap and storage case so you can carry it around easier.

allweldservices.com.au

COME IN SPINNER

SHIMANO INVITE YOU TO SIT AND SPIN USING THEIR LATEST JEWEL RANGE OF PURPOSE BUILT SPIN RODS, PERFECT FOR CATCHING SOME OF AUSTRALIA'S BEST SALT AND FRESHWATER FISH SPECIES.

Shimano have just released five purpose built spin models, built on a T45 blank and fitted with Fuji K Alconite guides and TVS reel seats, which means these new Jewel

spinners represent the best mix of reliable construction and superior value. Each rod has been designed and handpicked with target species in mind, from Snapper right through to Bream. What are you waiting for? Tell 'em you've gone fishing!

shimanofish.com.au



MACH Energy

PROUD TO BE MAKING THE FUTURE HAPPEN

The new Mount Pleasant Operation is progressing as planned.

While development and construction at the mine advances we continue to strengthen our communities and our future in ways that make us all proud. Thank you for your support and being part of our early history.



Image: Blackrock Industries

machenergyaustralia.com.au

KLASH OF THE TITANS

HOYT'S NEW KLASH COMPOUND BOW IS IN A CLASS OF ITS OWN WHEN IT COMES TO ADVANCE TECHNOLOGY, ULTIMATE ADAPTABILITY, AND HIP POCKET FRIENDLY AFFORDABILITY.

With solid engineering and industry-leading technology, Hoyt Archery delivers killer good looks and outstanding shooting capabilities with the new Klash compound bow, which, they say, is destined for greatness just like you. The super smooth Klash cam features an all-new hard wall, giving all skill level of bow-hunters that rock-solid hold for the perfect aim. Available with a full 7 to 30 kg draw weight range as well as an all-new 24 kg max draw weight configuration. This adaptable bow will last for years, growing along with the developing archer or bowhunter. If you're inspired by our bow-hunting story on page 35 this is a must see, must shoot bow!

hoyt.com



YOU DRIVE, IDRIVE

THE IDRIVE THROTTLE TUNER IS A CLEVER BIT OF TECH THAT TIGHTENS UP YOUR VEHICLE'S THROTTLE RESPONSE AND REDUCES ANY LAG.

Most new vehicles these days use 'fly by wire' throttle technology that can sometimes be a bit of a drag in your car's responsiveness. iDrive is useful piece of kit that allows you to tune the signal from the accelerator pedal multiple inbuilt settings to ensure you find a setting that suits your individual driving style. It includes an automatic control function that changes the level of throttle passed on pedal pressure. Basically, it's the smoothest aftermarket control module out there. Caught up yet?

idriveaustralia.com.au



LIFT OFF AT THE LAKE

We've all seen one of these in some American summer camp movie at one point or another, but most of us have never seen let alone used one in real life before. Now's your chance to get yourself organised and be the envy of everyone on the water this summer with your own Fat Boys safe-as-houses human catapult launcher. Turn a regular afternoon down by the shoreline into a ridiculously fun experience, launching your mates, and yourself, up into the air, like a bird, or Michael Jordan. 3... 2... 1... Lift Off!

fatboysblob.com

HAVE FUN WITH THE FAT BOYS AND GET YOURSELF ONE OF THESE INFLATABLE DIVING LAUNCH PADS AND SET IT UP SOMEWHERE ON THE WATER THIS SUMMER...



LOCAL COAL MINERS WILL COMPETE FOR BRAGGING RIGHTS



NEW 'WOMEN IN MINING' SERIES ADDED TO THE COMPETITION

SATURDAY
7TH OCTOBER 2017

PIRTEK PARK, SINGLETON
GATES OPEN 8AM. FIRST GAME KICKS OFF AT 9AM
ENTRY FEE \$5 PER ADULT. \$2 PER CHILD

FREE JUMPING CASTLES, SLIDES, FACE PAINTING, GIVEAWAYS
HOT FOOD, BAR, ICE CREAM AND COFFEE VANS, MERCHANDISE AND MORE...



WWW.CHARITYRUGBYLEAGUEDAY.COM.AU





KANISHA WITH TRAINER LEE HEUSTON



TRAINER DAVID ROLFE, KANISHA, AND HER SISTER JESSICA

'AVE A LAUGH WITH
AE ALFABS

alfabs.com.au | PH 1300 ALFABS (253227)

I went to the zoo the other day, there was only one dog in it, it was a shitzu.

FIGHT LIKE A GIRL

WATCH OUT RONDA ROUSEY, 14-YEAR OLD SINGLETON JIU JITSU WEAPON KANISHA LONG IS ON HER WAY TO MMA GLORY.

Singleton High School student, Kanisha Long was recently crowned champion at the Federation of Brazilian Jiu Jitsu NSW State Titles in her weight division.

Kanisha won all three bouts in complete style,

surprising everyone except her trainers, Darren Rolfe and Lee Heuston.

It was also no surprise for her dad, David Long. When David's not working in the industry as an environmental site technician he is

dedicating his time to coaching Kanisha.

"I know what she's capable of, so it wasn't that much of a surprise," said Long. "Kanisha is a very talented competitor. She's been ripping apart all her rivals for a while now."

This was the first time Kanisha has competed at the State Titles, but she was well prepared going in, with around 20 fights under her belt at six other competitions in the lead up

to the state competition.

"Kanisha has been learning Jiu Jitsu at the Hunter Muay Thai and MMA studio in Singleton, and she also goes into to Newcastle once a week to train at the Soul Fighter club too," says Long.

ALMOST EVERYONE THAT HAS SEEN KANISHA FIGHT KNOWS SHE'S GOT WHAT IT TAKES TO COMPETE AT MMA LEVEL AND MAYBE EVEN GO ON TO FIGHT AT A HIGHER LEVEL.

"Kanisha can't contest MMA until she turns 18, but we're training now to fight at that higher level," says Long. "To be honest, I'm just really proud of what she's achieved so far, she's got a lot of talent and a lot of heart."

Kanisha's last fight in August saw her take out her opponent in under two minutes, winning by submission armbar. Keep kicking ass Kanisha!

Process Equipment
 Wear Prevention
 Asset Management
 Engineering and Mechanical



Providing industrial solutions since 1978

www.hicservices.com.au

DAWID BOSHOFF AND WINNING CAPTAIN, DANIEL HOOGERWERF



BHP BILLITON CELEBRATE A GREAT YEAR WITH RUGBY LEAGUE

IN ITS FIRST YEAR AS THE MAJOR SPONSOR OF GROUP 21 RUGBY LEAGUE, BHP BILLITON HAVE A LOT TO CELEBRATE.

Mining is arguably the greatest supporter of local sport and especially so in the world of Rugby League, so it was exciting to see a major player like BHP Billiton get behind the Group 21 Rugby League this year. The team at Mount Arthur Coal should be applauded for supporting this much loved and historic competition.

OVER 3000 PEOPLE SHOWED UP FOR THE THRILLING GRAND FINAL WHERE ABERDEEN CELEBRATED A BIG UPSET OVER MINOR PREMIERS MUSWELLBROOK. TIGERS FINISHED THE REGULAR SEASON IN FOURTH, BUT LOOKED IN CONTROL IN THE DECIDER AND PROVED THAT THE SEASON IS NEVER OVER UNTIL THE FINAL BELL.

It was all smiles at the annual player presentation dinner where Mt Arthur Coal General Manager, Dawid Boshoff awarded Player of the Year Award to Muswellbrook Rams, Dylan Thorne.

Dawid said he was impressed by this year's competition and the

level of enthusiasm and support demonstrated by all throughout the season.

"All eight teams have played exceptionally well and I've particularly enjoyed seeing plenty of our MAC team actively involved in the competition, whether they're playing, volunteering or supporting the clubs coming out to the games. It's great to partner with an organisation like Group 21, who also have a great deal of passion for being involved in the local community," Dawid said.

@ The Coalface hopes this successful relationship will continue as it is a great example of the strong ties between our community and mining.

DAWID BOSHOFF AND PLAYER OF THE YEAR DYLAN THORNE.



THE SHOUT'S ON US!

WIN!



WIN A CASE OF XXXX GOLD TO CELEBRATE THE GOOD TIMES THANKS TO THE CLUBHOUSE.

For your chance to win, simply SMS: CLUBHOUSE and your email address to 0438 474 290.

Limit of one entry per person.

LTPM/16/01100



SPORT @ THE COALFACE IS BROUGHT TO YOU BY THE CLUBBY AND LOCAL LIQUOR



IT'S A KNOCKOUT!

WE'RE ON... OR, SHOULD WE SAY, IT'S ON, AGAIN! WHAT IS? THE 2017 A-PLUS CONTRACTING HUNTER VALLEY MINING CHARITY RUGBY LEAGUE KNOCKOUT COMPETITION. THAT'S WHAT!

If you haven't had your fill of footy this season yet, not to worry because on October 7 over 350 mad keen rugby league coal mining employees and 3,000 supporters from around the Hunter Valley will descend on Singleton's Pirtek Park and battle it out to win the coveted Westpac Rescue Helicopter Charity Shield.

This annual event has raised over \$135,000 for the Westpac Rescue

Helicopter Service and is great family day with 'State of Origin' worthy rugby league action, a 'Woman of Mining' series, jumping castles, amusement rides, face painting and loads of giveaways all day.

This event only gets bigger and better every year, so be there or be square!

charityrugbyleagueday.com.au

The **Clubby**
CLUB HOUSE
HOTEL

Singleton's home of sport, beer, betting, tucker, drive through and good times!



Tell 'em
SOL
sent ya!

If you can't find us...
try harder.

LOCAL LIQUOR
THERE'S ONE NEAR YOU



HIT THE ROAD

IF YOU ARE A MOTOR ENTHUSIAST, OR ARE JUST LOOKING FOR A FUN DAY OUT, THERE'S SOME GREAT EVENTS COMING UP IN THE HUNTER AND SURROUNDS OVER THE NEXT FEW MONTHS. WE'VE PUT TOGETHER A LIST OF OUR FAVOURITES SO YOU DON'T MISS OUT ON ANY OF THE ACTION.

SUNDAY 24 SEPTEMBER - SPRING CRUIZ-IN

This scenic cruise starts at Bunnings Wallsend and finishes at Hunter Valley Gardens with a show and shine where you can see a huge range of vehicles including Veteran, Vintage, Classic, Modern, Kombi, Hot Rods, Bikes and Trucks. Plenty of stalls, music and food with all proceeds from the show and shine donated to this year's charity, "Got Your Back Sista". huntervalleygardens.com.au/hvg/spring-cruiz-in-2017

SUNDAY 15 OCTOBER - GLOBAL VILLAGE MOTORFEST AND FAIR

Held at Muswellbrook Showground this is a car show with a difference featuring cars, bikes, boats, military vehicles, competition vehicles and even stationary engines and has trophies awarded in 20 categories. The day also features stalls, amusements, displays, food and free activities for children with gate proceeds going to the Muswellbrook PCYC. ozshowcars.com/nsw424.htm

FRIDAY 27 TO SUNDAY 29 OCTOBER - CHROME FEST

Head to The Entrance for the 10th year of ChromeFest. The 3-day event showcases live music, dance acts, the best of American Auto's and Hot Rods, street cruises and over 70 stalls. Don't miss the massive 'Show and Shine' Car Show on Sunday with over 500 cars expected to be on display throughout town. chrome-fest.org

SUNDAY 5 NOVEMBER - AUSTRALIAN POSTIE BIKE GRAND PRIX

The main street of Cessnock will host the 4th Postie Bike Grand Prix which will feature the main event, a celebrity race and the Cessnock Cup plus lots of food and drinks while you take in the all the action. Festivities kick off at Peden's Hotel the afternoon before with the annual meet and greet of all the teams and a parade facebook.com/australianpostiebikegrandprix

WEDNESDAY 29 NOVEMBER - HUNTER VALLEY ELECTRIC FESTIVAL

If you are up for something a little different head to Newcastle Kart Racing Club at Cameron Park for a festival that is about supporting the development of electric vehicle industries in the region. The EV Prize 1500 TT Motorcycle event is open to the public and industry sponsored teams. Other events include the EV Prize and Mini EV Prize which sees the regions primary and high school kids racing the electric bikes and solar powered cars they have built. hunterevfestival.net

Bengalla COMMUNITY OPEN DAY

**14th October 2017
Saturday 10am - 2pm
Muswellbrook Showground**

Bengalla Mining Company extends a warm invitation to the community to attend our Open Day.

Visit our mine site to learn more about our mining operations.

With a large range of displays and activities for all the family, enjoy a free BBQ, entertainment and go behind the scenes on a guided bus tour of Bengalla mine.

Tours will depart every 15 minutes from the showground between 10am and 2pm (bookings are required on the day and age limits apply)*.

* A parent or guardian must accompany children under 12. Covered footwear is essential for the mine tour. Minimum age for tour is five years old. For the safety of visitors and employees this event may be postponed due to rain.



For more information, please contact Debbie Day from Bengalla mine, Community Relations Co-ordinator

✉ debbie.day@bengalla.com.au
☎ +61 (0) 459 124 511

www.bengalla.com.au



HOOK UP :(

WE HOOKED UP ABROAD RECENTLY AND PACKED UP THE RODS AND SPENT SOME TIME CHILLING OUT IN VANUATU.

We met up with the local gurus of Wild Blue Fishing Charters, Captain Sammie and deckies, Tom and Richard and headed into the big blue yonder.

The conditions on the day tested out the old sea legs but this didn't stop us pushing through the elements to find out where the fish were lurking. A decision was made to set some lures early as we headed out of Mele Bay. As soon as they hit the water we landed our first Wahoo with the second Wahoo following soon after the lures were reset.

We noticed birds working in the distance and set off to investigate and as we got closer we noticed it was Yellow Fin Tuna feeding with tuna flying everywhere. So out with the popping gear and instantly a solid Yellow Fin was hooked up.

Unfortunately, it was dropped early in the fight but we soon hooked up again and this time the fish was landed. Though this is where the fun and the trip out ended for us, as while landing the fish a slip on the deck resulted in Richard receiving a nice treble imbedded deep in the shin.

OFFSHORE

Winter Snapper fishing continues to be slow but steady with some

nice fish turning up around the bay. Floating baits around the low light periods has been the most productive with the Snapper shutting down with the sun high in the sky.

The Tuna run off the south coast seems non-existent so far this year, with reports being very slim. Although recently some good numbers of Blue Fin have started to hit the decks off Sydney.

BEACH AND ROCK

Rock Hoppers are currently enjoying good numbers of Drummer, Black Fish and Bream which have all remained consistent especially after the recent big seas. Let's hope this continues throughout September.

Those on the beach are also being treated with good numbers of Bream, Tailor and Jewfish.

Just a heads up to if your planning to head up to Hawks Nest to take it easy as the beach front has been washed out.

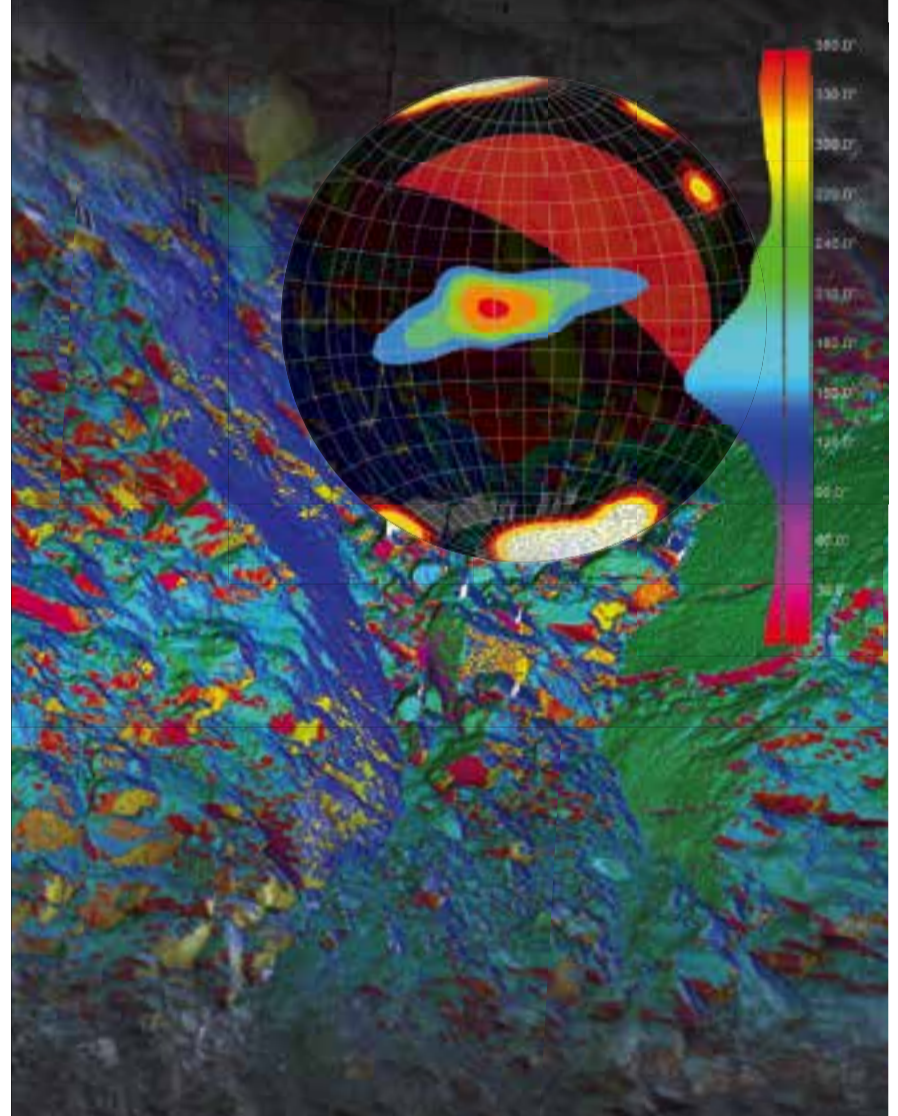
The bass season is underway, all the local creeks and rivers will be well worth a shot as the weather starts to warm back up. Impoundment Bass are continuing to touch up lightly weighted soft plastics and suspended hard body's worked around the edges.

Stay Hooked - Thrifty's



Geotechnical analysis tools help minimise risk

Fast, accurate results support safe operational decisions



- Automatically extract discontinuities from laser scans
- Create 3D linked stereonets and rose diagrams
- Perform interactive kinematic analysis
- Identify and map tension cracks scarps and fissures

Email jordan.herrmann@maptek.com.au
www.maptek.com



ACDC

YOU KNOW WHAT? WE'VE GOT TO GIVE IT TO OURSELVES AND OUR FOREFATHERS BEFORE US, 'US' HUMANS ARE PRETTY SMART.

From the invention of the wheel and the emergence of the steam engine, creation of electricity and more recently (and most memorably, for us anyway...), the coming of the digital age. Brilliant stuff.

These developments have

impacted every aspect of our lives from transport and manufacturing, right through to the way we order our takeaway food. It's of little surprise then, that mining has contributed to, and benefited from, these profound developments.

for a moment then, that you added a large alternator to an engine to create electricity. A direct current (DC) that can be converted with use of an inverter into a more efficient alternating current (AC), food to fuel your electric wheel motors. No torque convertor, no transmission, less moving parts. Voila. Easy.

Much like the hybrid cars that we're beginning to see on our roads, these AC motors are

In the 60's, miners were first introduced to the diesel driven, electrically propelled DC (direct current) haul truck. Initially derived from high-horsepower diesel locomotives, engineers and operators quickly grasped the advantages that could be achieved in propelling vehicles with electricity.

To understand 'why' however, we must first understand the 'how'. Imagine

faster, have more powerful (and controlled) acceleration, stronger braking performance and greater fuel efficiency. Compelling factors for miners, especially when one considers that an empty electric drive dump truck can clock 80 to 100km/h... I tell you no lies.

NOW, I KNOW FOR MANY OF THE 'TRUE BELIEVERS', ELECTRIC DRIVEN VEHICLES JUST AIN'T CRICKET. THEY DON'T SOUND THE SAME AND THEY ESPECIALLY DON'T SMELL THE SAME HOWEVER, WHAT'S UNDENIABLE, IS THAT THEY'RE HERE TO STAY AND WILL IN TIME SURPASS OUR MECHANICAL BROTHERS.

If you don't believe me, just ask Caterpillar, the mechanical 'Godfather' of mining, that recently introduced their 794AC and 795F AC electric drive trucks in response to competitors such as Komatsu, the first manufacturer to commercially produce AC propelled haul trucks.

Introduced in 1995, the 930E Haulpak was created when Komatsu partnered with GE to produce the first true, two-axle, 272-tonne-plus AC dump truck. An innovation that our forefathers would surely have been proud of and just like the steam engine and the electricity it produced, a stepping stone to a new reality.

THANKS TO COMPONENTS ONLY, OUR HEAVY EQUIPMENT EXPERTS **COMPONENTSONLY**

The easiest way to buy and sell heavy equipment components

WE SOURCE AND SELL COMPONENTS GLOBALLY TO KEEP YOU MOVING

COMPONENTS ONLY

1300 726 801

WWW.COMPONENTSONLY.COM.AU





SO YOU WANT BE A HUNTER VALLEY BOW-HUNTER?

WE ALL LIVE IN THE HUNTER VALLEY, BUT HOW MANY OF US HAVE ACTUALLY HUNTED?

Have you ever dreamed of hunting for food like our ancestors of old? Yeah, it's a little easier to just win a meat tray down the pub and throw it on the BBQ, but (apart from the beers) where's the fun in that?!

To really know where your meat comes from, you'll have to shoot it yourself. But how, and where, and what? @ TheCoalface has spent some time with the local experts, learning the basics and all the ins and outs of bow-hunting, so that you can start living like a true Hunter Valley native.

Bowhunting is the practice of hunting game animals by archery. In Australia only non-native species are recognised as game by the Australian Bowhunters Association. Arrows, bows, and sights are used to shoot targets, like deer and pigs and other game animals.

To get involved, you'll need to know a few important things. First, you'll need a licence to hunt. Apply for a

Restricted Game Hunting License (R-Licence) through the NSW Department of Primary Industry (DPI). After you pass an open-book exam you'll be permitted to hunt on public land in NSW that is declared and open for hunting. Second, you'll need to join the Australian Bowhunting Association and an approved club for accreditation and insurance purposes. Third, you'll need the right equipment specific to your needs and abilities.

"FOR SOMEONE JUST STARTING OUT, AND BEFORE YOU BUY ANY GEAR, IT'S REALLY IMPORTANT TO GO TO AN ARCHERY CLUB, TEST OUT THE GEAR, AND GET MEASURED UP," SAYS PATRICK WHITE FROM THE HUNTER BOWMAN FIELD ARCHERY CLUB, LOCATED IN ASHTONFIELD, NEAR MAITLAND.

Patrick also works

in the mining industry as an electrician at North Wambo and he's always trying to get his work mates into bow hunting. "We work pretty hard down a big dark hole, which, like bow hunting is not for everyone, but I love to chance to get out and hunt and practice whenever I can," Patrick says.

Boolaroo Bowmen Field Archers, located near Lake Macquarie, is another local club that can help you get started on your bowhunting adventure. Club secretary Stephen Heusz recommends the 'try-before-you-buy' method by coming to a 'shoot' day at their archery club near Fassifern Oval.

"You need never have shot a bow before. Our accredited

and friendly coaches are here to help and guide you, so you get the most enjoyment from the sport," Stephen says. "Even if you don't have your own bow, we have a full range of loan gear available so you can experience archery first hand without having to invest in your own equipment."

Investing in your own equipment can be an expensive proposition, which is why it's a good idea to sling a few arrows in the safe surrounds of qualified professionals first, and then, if you enjoy it, start looking at getting your own gear. If you do decide you want to buy your own bow, there's a number of hunting and archery outlets all over the Hunter that will help you get set up.

Jason Scott at Hunter Valley Hunting Supplies in Denman can size you up and fit you out in the Upper Hunter, and Adam West at Ten Zone Archery in East Maitland has a wealth of gear and information to help you get started.

"BOWHUNTING AND THE BOWHUNTING COMMUNITY IS GREAT FUN FOR EVERYONE," EXPLAINS STEPHEN. "WE HAVE MEN AND WOMEN MEMBERS OF ALL ABILITIES, FROM BEGINNER TO ADVANCE, AND ALL AGES, FROM EIGHT TO EIGHTY YEARS OLD."

If nothing else, bowhunting is a great chance to be a part of a community, meet new people and learn a few important life skills along the way.

BOW ON, FIND OUT MORE...

- **Department of Primary Industry** visit dpi.nsw.gov.au/hunting
- **Hunter Bowmen Field Archery Club** Four Mile Creek Road, Ashtonfield, NSW, Contact Patrick White: **0431 177 992**
- **Boolaroo Bowmen Field Archers** Fassifern Oval, Millar Rd, Fassifern, NSW, Contact Stephen Heusz: **02 4953 3401**
- **Hunter Valley Hunting Supplies** 12 Ogilvie St, Denman, NSW, Contact Jason Scott: **0488 147 310**
- **Ten Zone Archery** 117 Lawes St, East Maitland, NSW, Contact Adam West: **1300 504 033**



FIRE AVOIDANCE | FIRE DETECTION | CONDITION MONITORING



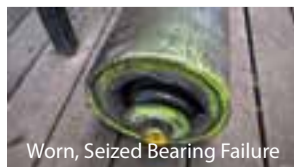
Cable Insulation Burnout



Spontaneous Coal Bunker Fires



Conveyor Fires



Worn, Seized Bearing Failure

FIGHT FIRE WITH FIBRE WITH OUR DISTRIBUTED TEMPERATURE SENSING

FOR MORE INFORMATION
www.apapl.com.au
or call 1800 571 828



FIRE DETECTION

Features ruggedised stainless steel fibre cable, that is immune to EMI, requires no calibration and has a 40 year life span.

CONDITION MONITORING

Long distance temperature measurement for conveyor idler bearings, HV cable thermal mapping & switchboard busbars.

IT'S EXERPIES SEASON

SPRING HAS SPRUNG AND EVERYONE IS DUSTING OFF THE DUNLOP VOLLEYS, HITTING THE PAVEMENT AND GETTING FIT AND TONED FOR A BUDGIE SMUGGLING, BIKINI WEARING BODY TO PRANCE AROUND THE BEACH, BACKYARD POOL OR LOCAL RSL...AND I'M NO DIFFERENT.

EXERCISE??



I THOUGHT YOU SAID
"EXTRA PIES!"

The gyms are doing a roaring trade and magpies across the Hunter are on code red trying to attack. The vege section at Woolies is crazier than the bar at Pielament House was on Mad Monday. In the spirit of inspiration, I too will be slipping into attack mode in my active wear in support of all the fitness fanatics out there. My very lucky missus can't contain her excitement at the sight of me already prancing around the house in my leopard skin 'Tony Abbotts' as I dive into the pre season summer 'buff up'.

I have started my own fitness routine you might want to look at trying. It involves my young fella driving me around local pie shops across The Hunter and me bolting inside each one while he works the stopwatch. XXXX Gold being my energy drink of choice has ensured I keep hydrated. This Pieleo diet, as I call it, has been a massive hit and I have gained 7 kgs of pure muscle I reckon.

SO FAR, I HAVE ACHIEVED A PERSONAL BEST OF UNDER ONE MINUTE FOR EACH LOCATION FROM LEAPING OUT OF THE KINGSWOOD, DIVING INTO THE SHOP AND BAGGING AND DOWNING A COMPETITION STANDARD HOT BEEF POCKET. THE SIGHT OF ME BURSTING THROUGH THE DOORS IN NOTHING BUT MY ANIMAL PRINT NUGGET HUGGERS HAS SET HEARTS RACING.

'AVE A LAUGH WITH



alfabs.com.au | PH 1300 ALFABS (253227)

Yesterday I accidentally swallowed some food colouring. The doctor says I'm OK, but I feel like I've dyed a little inside.

The best workout diet combination I have learnt from the regime is about combining food groups and my tips are as follows: Start at Blakeney's in Maitland for lasting energy before heading to Grices in Cessnock to carb load. From there leg it to Coxy's in Singo for energy on the run followed by a quick stop at the Viet's bakery for a quick mid workout custard slice. Cruise to the finish at Crofty's Aberdeen for two post workout sausage rolls and you're done.

Repeat this program three times a week for 6 weeks and I guarantee you will be looking glorious come beach time. Harden up kids! It's time to get serious for summer.

Stay focused and best of luck from you fatness exerpiies guru...
The Pieminister of Straya!

REFUSE-TO-FUSE



THE FASTEST WAY TO JOIN HDPE PIPE

THE REFUSE-TO-FUSE™ SYSTEM FOR POLY PIPE



www.victaulic.com
vicaust@victaulic.com
1300 PIC VIC (1300 742 842)

AD-11014
© 2017 VICTAULIC COMPANY. ALL RIGHTS RESERVED.



WORTH A DRIVE

THERE'S NOTHING LIKE A SUNDAY DRIVE WITH THE MISSUS. IF YOU FANCY FILLING IN A LAZY DAY IN THE HUNTER AND A BIT OF LUNCH, PACK UP THE CAR (AND THE KIDS IF YOU'VE GOT SOME) AND HEAD TO THE LINGA LONGA INN AT GUNDY.

We recently woke up on one of those Sundays with nothing much to do and thought a little drive up the Hunter to hunt down a nice pub feed and a few beers was just the ticket to waste away the day.

We really didn't have much of an idea where we were heading but that was the point...this was a voyage of discovery. Northbound on the New England Highway we agreed Scone was the destination so we set sail.

Along the way we stopped for a Crofts pie in Aberdeen for morning tea. Arriving in Scone things were quiet being a Sunday. As we meandered around town our feet led us to the fanciest place in town, The Cottage. We came close to sitting down as it looked great, but decided it was a bit fancy and pub grub was more what we were looking for. To be honest there wasn't a lot on offer in town that day so on a whim we decided to push a bit further and headed to Gundy.

What a beautiful place to drive towards. We wound our way through horse studs, hills and across old bridges in a we're not going anywhere in a hurry kind of way before rolling into the beautiful little Upper Hunter hamlet of Gundy. Being a bit hungry and thirsty, the car seemed to automatically nose itself to park out front of the historic Linga Longa Hotel. The smiling faces of the families with little n's tearing around the kid perfect front lawn and a smattering of locals enthusiastically catching up to discuss local news and gossip all contributed to the welcoming vibe.

We walked inside to a log-fired ambience and headed straight to the eclectic bar for a couple of beers drawn by new publican Dan Bennet. Dan's one of those guys who has a smile for everyone and makes friends as easily as he pours beers. He and his wife and their Brady Bunch family of 6 kids have recently got in the saddle to return this much loved destination pub to its former glory.

The kitchen was doing a roaring trade so we placed our order of a simple rump, salad and chips and bangers and mash and settled in next to the very cozy open fire.

BEFORE LONG THE MEALS ARRIVED AND WE WERE DIGGING INTO THE BEST OF GOOD OLD PUB FARE. PROPERLY COOKED AND GREAT QUALITY.

Dan soon joined us for a quick chat and as he passionately talked about the pub it was clear he wanted to create something special for locals and visitors alike. His goal is to get more like us up there regularly. The pushcarts and kid stuff on the huge front lawn will be a huge draw for families, functions and locals alike. In fact locals can even ride up and hitch their horse out front if they so desire. Bike riders clearly love the joint too as there was plenty of leather on show.

At the end of the day this is simple but special destination pub and one you should visit soon - Mates, families, functions...whatever. You won't need much encouragement to linga a bit longa!



WIN!

HAPPY BIRTHDAY

@ THE COALFACE IS CELEBRATING OUR SECOND YEAR BACK WHICH MEANS.... WINE! WINE! WINE!

We want you to help us celebrate so one lucky reader will win a bottle of red and a bottle of white Margan's Field Blend.

For your chance to win, simply SMS: WINE and your email address to 0438 474 290.

Limit of one entry per person.
LTPM/16/01100



Protection, Comfort & Performance at an Affordable Price

- SUITS MIG, STICK, TIG & PLASMA CUTTING
- 2 ARC SENSORS
- MEETS AUSTRALIAN STANDARDS
- GRIND MODE
- HIGH IMPACT RATING
- 1 YEAR WARRANTY



NOW IN STOCK AT ALLWELD SERVICES



BERESFIELD | MUSWELLBROOK | EAST MAITLAND
1300 663 888

@ THE COALFACE TRIVIA

BROUGHT TO YOU BY THE SINGLETON HISTORICAL SOCIETY

Original name of Greta's first mine?

What year did the Branxton railway station open?

Before being renamed Branxton what was the settlement known as?

Answers next month.

LAST MONTHS ANSWERS

1. When did the Newcastle BHP Steel Works close? - **1999**
2. When was coal officially discovered in Newcastle? - **1797**
3. Name of the old power station at Nobbys from 1915 - 1953? - **Zaara Street Power Station**



@ THE COALFACE PRIZE WINNERS

VOLUME 1 - NO 11: AUGUST - SEPTEMBER 2017

HPOTS Work Safely at Heights Course - thekeenone@live.com.au

Roberts Meats Monthly Meat Raffle - pcurnow66@gmail.com

Bunnings Gift Voucher - davidandsue4@hotmail.com

Clubhouse XXXX - oompa1976@bigpond.com

Event Cinemas Gift Voucher - megwroser2017@gmail.com

Komatsu Diecast - lisamorrow21@hotmail.com

CONGRATULATIONS TO ALL OUR WINNERS!

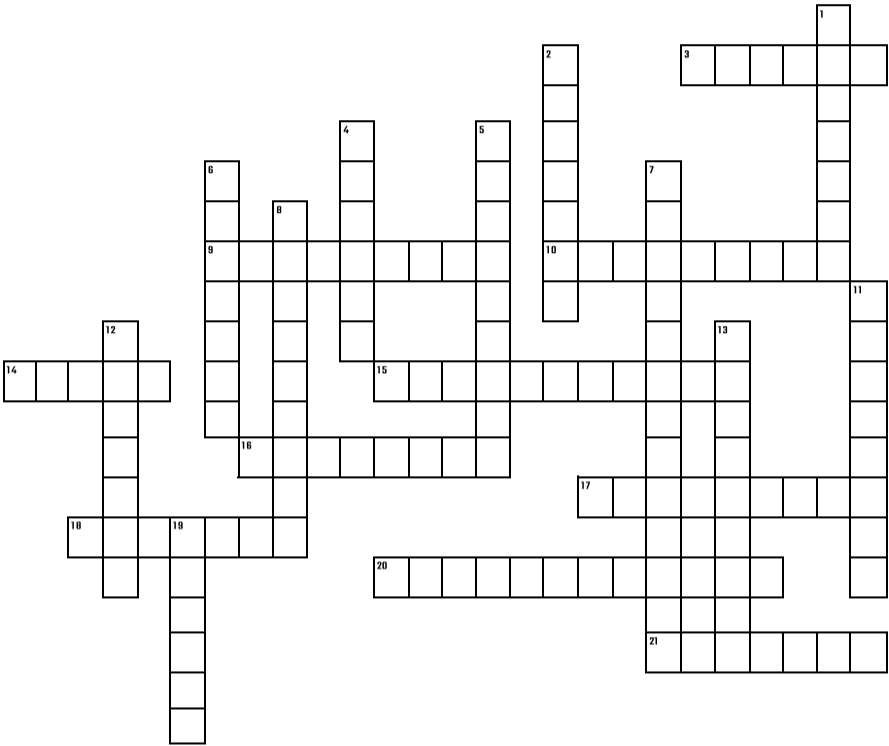
@ THE COALFACE CROSSWORD

ACROSS

- 3 What shape is the Milky Way (6)
- 9 In 1781, Uranus was discovered using this device (9)
- 10 The name of the NASA rover launched to Mars in 2011 (9)
- 14 The hottest planet in our solar system (5)
- 15 The first human to travel in space (4,7)
- 16 A theoretical passage through space-time (8)
- 17 What is a meteor called when it reaches Earth's surface (9)
- 18 Which planet is furthest from the sun (7)
- 20 The brightest comet in the solar system (7,5)
- 21 What force bends light rays travelling through the universe (8)

DOWN

- 1 In what month is the Earth closest to the sun (7)
- 2 What you hear in space (7)
- 4 What unit of length that is approximately 3.26 light years (6)
- 5 What was Sputnik (9)
- 6 Which planet does Titan orbit (6)
- 7 Who was the first man to walk on the moon (4,9)
- 8 A place with a gravitational field that not even light can escape (5,4)
- 11 The largest moon in the solar system (8)
- 12 The moon Callisto orbits this planet (7)
- 13 Closest galaxy to the Milky Way (9)
- 19 How many people have walked on the moon (6)





mrs GROUP

START WORK NOW!

LOOKING FOR THE RIGHT JOB RIGHT NOW?

- PLANT MECHANICS/FITTERS
- BOILERMAKERS
- LINE BORERS
- AUTOMOTIVE ELECTRICIANS
- HV ELECTRICIANS
- INDUSTRIAL CLEANERS
- EXPERIENCED EARTHWORKS OPERATORS
- STORE PERSON
- WHITE COLLAR — ADMIN, CLERICAL, FINANCE, RECEPTION

CONTACT US TODAY...

PH 6540 9400 EMAIL recruitment@mrssg.net



MRS GROUP IS THE COMBINED STRENGTH AND CAPABILITIES OF:





PROJECT MANAGEMENT | LABOUR HIRE | MAINTENANCE | PLANT HIRE

www.mrssg.net
6540 9400

ACTION AND ADVENTURE IN AOTEAROA

OK, SURE, YOU COULD WAIT TILL YOU'RE OVER 55 AND GO ON ONE OF THOSE OAP GUIDED TOURS AND GET THE ROYAL TREATMENT (ON AND OFF AND ON AND OFF A BUS ALL DAY)... OR, YOU COULD WAKE UP TO YOURSELF, REALISE YOU'RE NOT GETTING ANY YOUNGER, AND GET AMONGST ALL THE ACTION AND ADVENTURE OF QUEENSTOWN AND SURROUNDS.

Kick start your heart and head across the dutch, aye bro, to Queenstown, New Zealand, where in a single day you can move full speed up the Shotover and find a ledge to fall off in the morning, then eat one of the best burgers in the world for lunch and take to the sky in the afternoon, before coming back down to earth and tasting some world class Kiwi wines.

Before you even land, the flight into QT is a mind-blowing adventure all its own as you go soaring over the beautiful snow-white Southern Alps made up of enormous peaks like Mount Aspiring, Mount Bonpland, the Centaur Peaks and The Remarkables. This is Lord of the Rings country, so get the kids to keep an eye out for wizards and orcs and dragons and trolls on the way in.

LOCATED ON THE SHORES OF THE LAKE WAKATIPU, QUEENSTOWN IS AN ADVENTURE SPORTS LOVER'S PARADISE, BUT ALSO HAS PLENTY TO OFFER THE CRUISIER TOURIST WHO'S LOOKING TO JUST SIT BACK, RELAX AND TAKE IT ALL IN.

For many visitors, though, bungee jumping and New Zealand go hand in hand, and the experience has almost become a rite of passage for people who decide to take the heart-pounding leap

of faith off of the Nevis Bungy.

Measuring just over 134 metres, the Nevis Bungy is the highest in Australasia, which means you'll experience a terrifying 8.5 seconds of free fall as your head and heart rushes full speed towards the earth below. Once you're in the swing of things, give the Nevis Swing a crack. It's the world's biggest swing with a 300 metre arc, 160 metres up in the air. This ain't for the faint of heart!

If you want to get even higher, go jump out of a plane and skydive from 15,000ft, or leap off a cliff attached to a hang glider or paraglider. It's frightening for sure, but a truly unforgettable experience.

If you've still got your stomach after any of that, you'll definitely be feeling hungry. Head back into town and eat out a Fergburger... Um, excuse me! A what? A Fergburger. It's a fast food joint located in Queenstown that makes one of the world's greatest burgers. Smashed between two buns you'll find over 30 different types of burg to choose from. As well as the standard beef and chicken, you'll find a Ferg-full of other tasty variations, like cod and falafel and lamb, even venison.

Afterwards, head next door to their sister shop, Ferg Baker, and wrap your mouth around some warm apple pie and maybe a couple of pastries. Ferg is the king of fast but seriously good food in Queenstown.

Ferg is fast, but if it's a slower pace you crave, head east to the Gibbston 'Valley of the Vines'. Renowned for some of the world's best Pinot Noir, here you can get a taste for the finer things in life, at various wineries, restaurants and cellar doors. There are over 75 wineries and restaurants to choose from, meaning you can drop your heart rate while you drop in for a taste, chat to the locals and enjoy a delicious meal with a glass of your favourite wine.

As night arrives, you'll need to find some place to rest your head and recharge, so you're ready for another action packed day tomorrow. There's plenty of places to stay in Queenstown, but we reckon you can't go past accommodation that has that personal touch and all the comforts of home.



Many BnB's are only a short drive from the town centre and the hosts will have a vast amount of local knowledge they can give you to make your travels even better. Otherwise, jump online and check out a whole host of short-stay rental and holiday homes, from top of the line luxury to quaint, romantic cottages hidden amongst the hills.

Don't wait till you're an OAP to go visit our mates across the dutch. Queenstown is full of action, adventure and more, and a great intro to the rest of Aotearoa.

KEEP EARTH MOVING FOR LESS

MINING EQUIPMENT
PARTS, RENTAL
& SALES



1300 123 287
BTPGROUP.COM.AU



DON'T BE FUELISH – GET A SMARTROC

Save up to **50% fuel**

High pen rates, great hole accuracy, smart engine and compressor management, **50% less hoses....**

Is SmartROC the most fuel efficient drill rig in the world?

Go to ***mostfuelefficient.com*** and see for yourself

Atlas Copco

